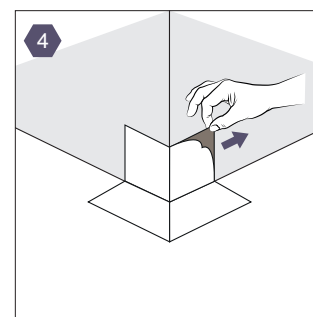
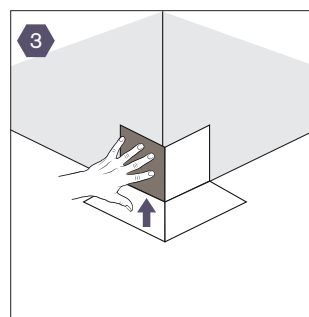
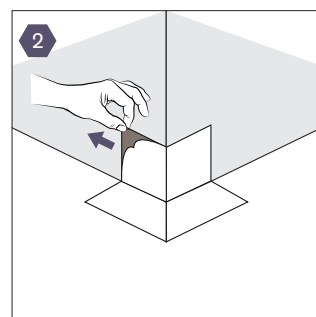
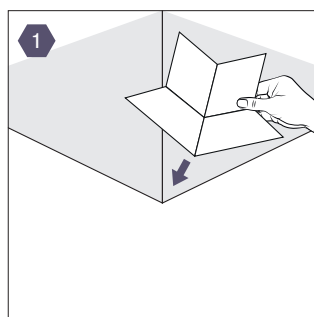


KORNERSEAL

GAS

INSTALLATION GUIDE

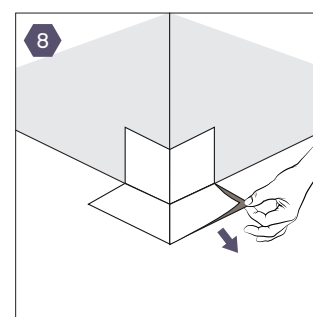
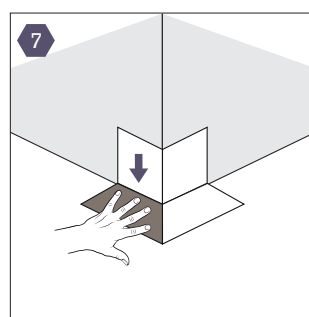
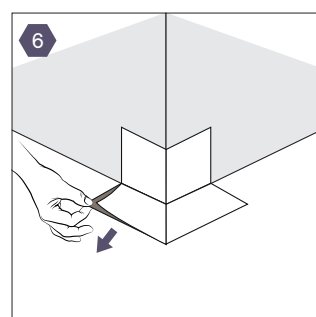
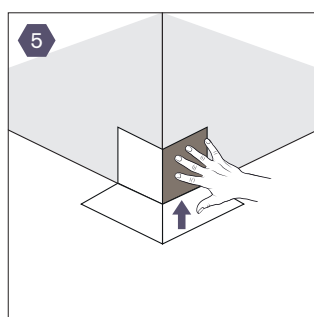
Sealing of outside corners



Remove the protective film from behind a wall-mounted adhesive tape.

Press firmly on the adhesive tape on the wall side.

Remove the protective film from the other wall-side adhesive tape.

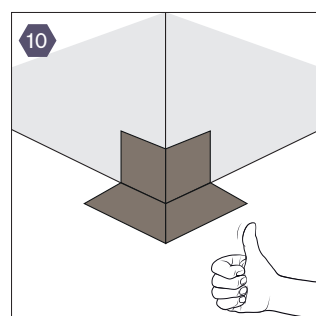
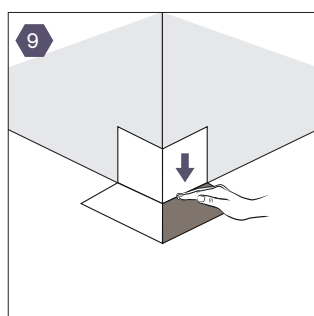


Press firmly on the adhesive tape on the wall side.

Remove the protective film from under a floor-lying adhesive tape.

Press firmly on the adhesive tape on the bottom.

Remove the protective film from under the other floor-lying adhesive tape.



Press firmly on the adhesive tape on the bottom.

Press the KORNERSEAL GAS surfaces and edges firmly with using Partel HELPING HAND tape pressure applicator.

Instructions for application:

The surface must be clean, dry, and free from dust and grease. For seamless connections against the substrate, it's recommended to avoid any creases.

To improve the adhesion of KORNERSEAL GAS adhesive tapes on porous surfaces and various substrates like concrete, plaster, soft wood fibre boards etc., using ACRAPRIME® LIQUID or ACRAPRIME® SPRAY primer is recommended.