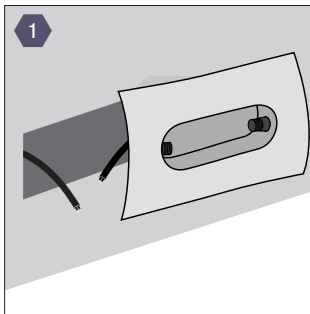


# ELECTRISEAL

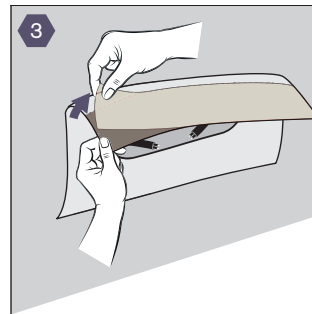
## BOX

# INSTALLATION GUIDE

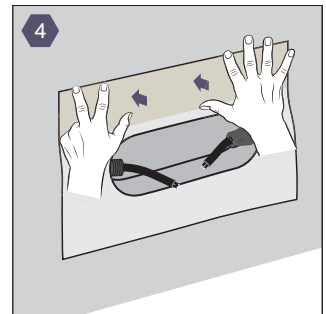
Air sealing of cavity wall sockets



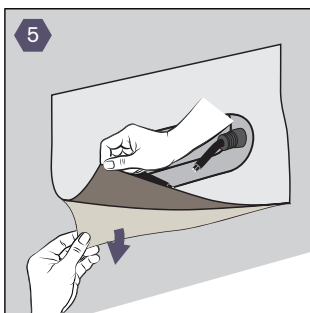
Cut the cable at an angle and pierce through the membrane of the integrated ELECTRISEAL BOX.



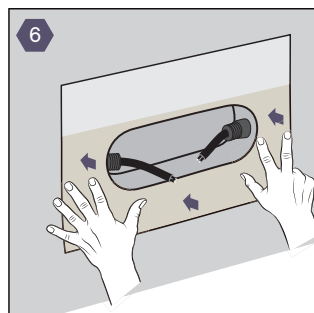
Remove the upper part of the protective release backing film.



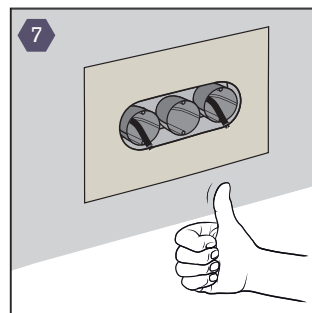
Press the upper part of the adhesive tape firmly to the substrate.



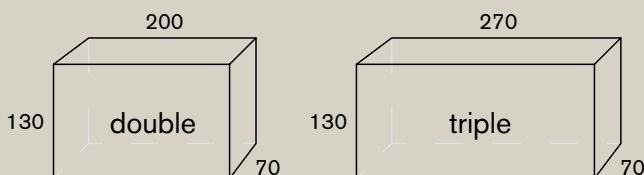
Remove the lower part of the protective release backing film.



Press the lower part of the adhesive tape firmly into the substrate.



### Required cut-out in mm in wall/ foil/ insulation:



### Instructions for application:

The surface must be clean, dry, and free from dust and grease. For seamless connections against the substrate, it's recommended to avoid any creases.

The diameter of the selected sleeve should have the right dimension for the cable bushing.

To improve the adhesion on porous surfaces and various substrates like concrete, plaster, soft wood fibre boards etc., using ACRAPRIME® LIQUID or ACRAPRIME® SPRAY primer is recommended.