

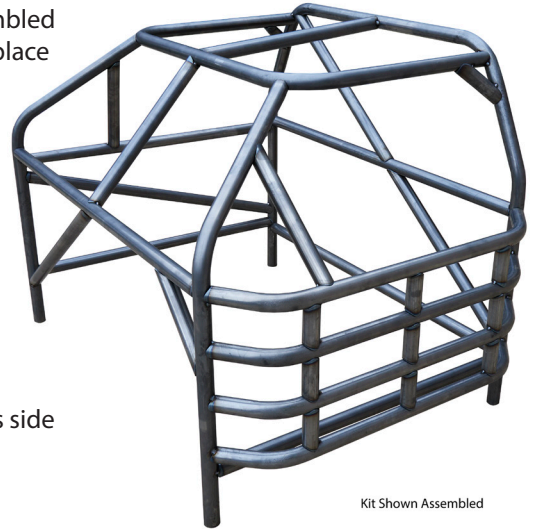


ALL22095 Crown Vic Cage Kit

INSTALLATION GUIDE

The following information is provided to help with the installation of this kit. We recommend using small tack welds to hold tubing in place until entire cage has been assembled before fully welding the cage. The use of small ratchet straps to hold tubing in place during fitment is highly recommended.

- Level car front to back and side to side using door openings to determine level. This step is important to properly position every component of this kit.
- This kit is designed to be installed without cutting or removing the roof from the car.
- Remove the lower dash panel from vehicle to allow the cage to be installed close to the dash.
- The driver's side B-pillar will need to be modified and possibly removed later to allow room for the curved door bars. The passenger's side B-pillar can remain if using the straight door bars included in the kit.
- Remove rear roof cross brace.
- For reference, the rear main hoop will be installed directly in front of the rear seam in the floor pan. Lay the dash bar (this is shipped taped to the lower cross bar which is welded to the main hoop) up against the hump of the rear seat pan. Use the notched ends of the dash tube to mark the floor for removal (See figure #1). Mark the floor 2" behind the tubing notch and 4" forward of the notch, use these marks to layout your cut area (Approx. 4" x 8"). Do this on both sides.
- The dash bar used in the previous step will be used later to locate the 1-7/8" holes that will need to be placed in the frame or installing the main hoop.
- Measure forward 40" from the front of the rear floor hump and place a mark, from this mark forward measure out an area approximately 4" x 6" (See figure #2). Do this on both sides.
- Remove the cut areas of flooring from the previous step where the roll cage will pass through sheet metal and contact the frame.
- Do not cut front or rear posts to adjust height! This kit is designed to drop through the top of the frame and rest on the inside lower portion of the frame.
- Use the dash bar again as a guide to determine the hole locations for the main hoop (See figure #1). Center the dash bar on the top of the frame rails up against the hump of the rear seat pan to determine the location for drilling the holes for the main hoop. Once the locations for the holes are determined, drill the 1-7/8" holes in top of frame using a hole saw (holes should be just inside the outer frame rail side).
- Remove any rust or corrosion from the frame around these holes so the cage can be welded after the cage has been fully assembled (This will be difficult to do once cage is in place).
- Install the rear main hoop into the frame holes drilled in the previous step allowing the main hoop to rest on the bottom of the frame and stand straight up. This is a tight fit and may require the holes in the top of the frame to be egg shaped slightly for the main hoop to fit in some cases.
- Next use the straight bottom door bar and position it against the main hoop to determine the location for the holes in the frame for the front windshield post. Find the center of the frame at this point and drill 1-7/8" holes. Repeat this step for the passenger's side.



Kit Shown Assembled

Allstar Performance 8300 Lane Dr., Watervliet, MI 49098

Phone: (269) 463-8000 Fax: (800) 772-2618 www.allstarperformance.com



ALL22095 Crown Vic Cage Kit

INSTALLATION GUIDE

- Place windshield posts in the frame holes drilled in the previous step.
- Position the passenger's side lower straight door bar between the main hoop and windshield post, this bar should be positioned against the floor pan and may be tacked in place to the main hoop if needed (see Figure #3). Do not tack the lower door bar to the windshield post at this time. The windshield post will need to be rotated to meet the upper halo in a future step. Repeat this step for the driver's side.
- Position the driver's side upper curved door bar between the main hoop and the windshield post but do not tack weld at this time as it will need to be positioned to the same height as the dash bar when the dash bar is properly positioned. Tech Tip: Use a small ratchet strap/binder around the main hoop and the windshield posts to hold the windshield tight against the upper and lower door bars.
- Position the passenger's side upper straight door bar between the main hoop and the windshield post but do not tack weld at this time as it will need to be positioned to the same height as the dash bar when the dash bar is properly positioned. Tech Tip: Use a small ratchet strap/binder around the main hoop and the windshield posts to hold the windshield tight against the upper and lower door bars.
- Position the dash bar between the two windshield posts above the steering column but do not tack weld at this time. Tech Tip: Use a small ratchet strap/binder to hold both windshield posts tight against the dash bar which will allow rotating the windshield posts against the halo in the next step.
- Install the top halo bar by rotating the windshield posts so notches of the windshield posts support the halo bar in the front and the back of the halo tubes contact the main hoop. Tech Tip: This is a two-person job so don't try to do this alone.
- Level the halo and tack weld to the main hoop (Visual reference to front of the roof).
- Verify windshield posts are vertical front to back and side to side. Tack weld to halo.
- Center windshield support bar (often referred to as the "Earnhardt bar") between dash bar and top halo bar, move dash bar up as needed making sure dash bar is level side to side.
- Align the driver's side top curved door bar with the dash bar and level front to back, tack weld in place.
- Align the passenger's side top straight door bar with the dash bar and level front to back, tack weld in place.
- Install the passenger's side middle (diagonal) door bar and tack in place.
- Starting from the top and working your way down install the remaining driver's side curved door bars and spacers. Center the middle spacer on the door bar and install the outer spacers about 13" from the center spacer measuring from center to center of spacers or about 11" space between spacers.
- Install the A-pillar supports between the upper door bar and windshield posts
- Install the top center halo support between the main hoop and front of halo aligned with the windshield support.
- Install the long lower dash support bar (align with windshield support) to passenger's side windshield post.
- Install the short lower dash support bar to driver side windshield post.
- Install the rear halo gusset support bars from the bottom of the halo to main hoop.

Allstar Performance 8300 Lane Dr., Watervliet, MI 49098
Phone: (269) 463-8000 Fax: (800) 772-2618 www.allstarperformance.com



ALL22095 Crown Vic Cage Kit

INSTALLATION GUIDE

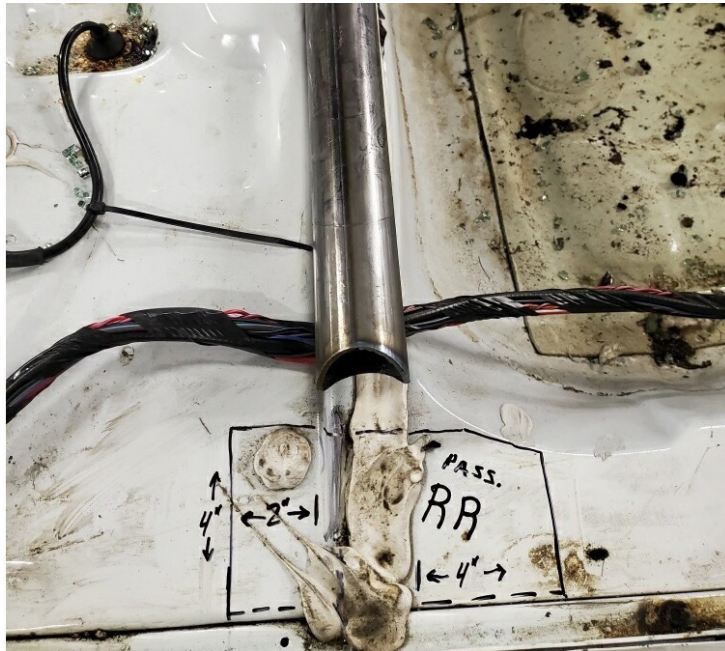


Figure #1



Figure #2



Figure #3

Allstar Performance 8300 Lane Dr., Watervliet, MI 49098
Phone: (269) 463-8000 Fax: (800) 772-2618 www.allstarperformance.com