

GRAYL

LEGEND & QUEST
WATER FILTRATION CUP
Owners Manual



FILL. ↓ PRESS. ↓ DRINK.
Works like a French Press!

International Manuals:
Manuales / Manuels / Manuali / Handbücher
www.thegrayl.com/manuals

Changing the Way the World Drinks Water.

Thank you for choosing GRAYL. Our patented technology creates safe, great tasting water on the go with no prolonged waiting (gravity filters), pumping, squeezing, or sucking. In seconds, our interchangeable filters produce safe, clean water. Drink Freely™ from the Water Filtration Cup that works like a French Press.



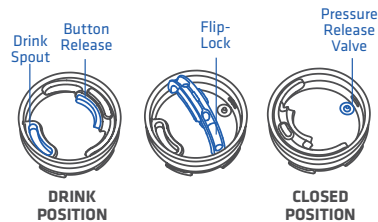
INNER & OUTER CUPS
Compact dual cup system creates the PRESS action mechanism and isolates the filtered water.

18/8 STAINLESS STEEL
Chosen for sustainability, durability and beauty, GRAYL is constructed of 18/8 stainless steel that won't leach chemicals.

FOOD GRADE SILICONE
Our food-grade silicone is safe, long lasting and seals tight.

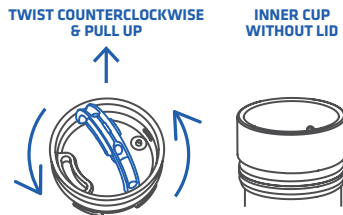
FILTER MEDIA
Our filter technology combines fast flow and unrivaled removal of contaminants.

Lid Operation Unlock. Flip. SNAP!



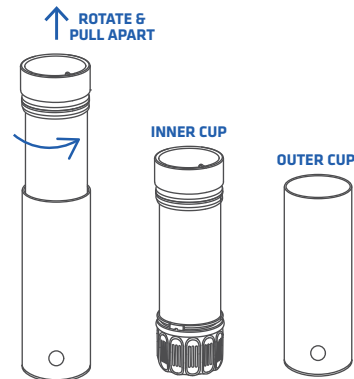
To open, press the gray button (to unlock), flip the bail and SNAP! into the DRINK position (a SNAP! signifies the pressure release valve is engaged and locked open). When on-the-go, return the bail into CLOSED position and seal airtight with a SNAP!

Lid Removal.



Remove the entire lid by holding the handle of the Flip-Lock Lid and **twisting counterclockwise 1/4 of a rotation** and pulling upward.

Separate Inner Cup from Outer Cup.

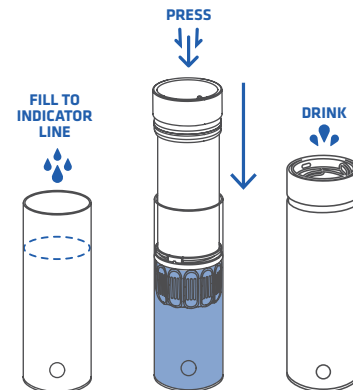


Place one hand on the Outer Cup and another on the Inner Cup, **then rotate while pulling apart.**

PERFORMANCE TIPS:

- Using a twisting motion helps facilitate cup separation.
- When dry, cups may require more force to separate.
- Ensure the filter is properly connected to the Inner Cup/Filtration Press.

Fill. Press. Drink.



Fill Outer Cup with water to the indicated fill line. Remove lid and gently press Inner Cup into Outer Cup. **Apply steady downward pressure** until filter rests at bottom of cup. Drink Freely™ from the Water Filtration Cup that works like a French Press.

TAP Filter 7 second press
TRAIL Filter 15 second press
TRAVEL Filter 30 second press

PERFORMANCE TIPS:

- Before applying steady downward pressure, ensure the lid is removed and avoid "cupping" the palm of your hands over the top of the Inner Cup/Press.
- Don't use excessive pressure, which decreases filtration performance.

Take control of your water quality.



TAP TRAIL TRAVEL

Our unique interchangeable filter system provides varying levels of protection. The **TAP Filter** removes many chemicals and heavy metals, our **TRAIL Filter** adds protection from bacteria & protozoan cysts, and the **TRAVEL Purifier** provides the ultimate defense against viruses while traveling in developing countries or highly impacted wilderness areas.

Filter Media

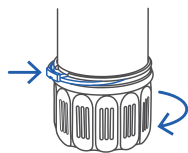
ACTIVATED CARBON

The **TAP Filter** uses activated carbon fiber with an extremely small micro pore structure and a capacity for absorption far greater than conventional granular activated carbon.

G3+™ FILTRATION MEDIA

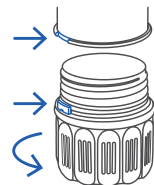
The **TRAIL Filter** and **TRAVEL Purifier** use patented G3+™ Filtration Media – three filtration technologies in one for added protection: 1) A triple-charged mesh traps disease-causing germs while allowing water to flow quickly, 2) Activated natural carbon (made from coconut shells) attracts and traps many heavy metals, industrial chemicals, 3) An integrated anti-microbial agent suppresses the growth of mold, mildew and bacteria, keeping GRAYL fresh between uses.

Filter Removal & Installation.



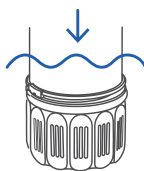
Removal.

Locate filter lock tab at bottom of inner cup. Pull out filter lock tab and twist filter clockwise.



Installation.

Insert filter into inner cup/press and rotate counter-clockwise. Screw filter until filter lock tab clicks into filter lock slot. Do not over tighten.



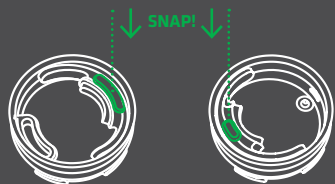
Before first use.

Before drinking, press water through the system twice. Discolored water (caused by harmless activated carbon dust) is normal during the first few cycles.

For more Filter & Purifier information:

Review the filter manual included inside your GRAYL Water Filtration Cup

Precautions to keep in mind.



DRINK POSITION

CLOSED POSITION

- To prevent spills between uses, always **SNAP!** the Flip-Lock into the **CLOSED** position.
- Filter water only (no other liquid).
- **Choose your water source wisely.** Always use the cleanest, safest, and most reliable water source possible. Do not expose/fill the inner cup with untreated water.
- **Before separating inner and outer cups, make sure the inner cup is empty.** When separating cups for filtration, be aware that residual water will drip from filter.
- **Do not use boiling water** or allow your GRAYL Water Filtration Cup to **freeze**.
- **Do not put** any GRAYL components in **microwave or freezer**.

Cleaning, Maintenance, and Storage.

Your GRAYL is easy to maintain by following a few basic guidelines. Take care of your cup and it will take care of you.

Don't use soap on filter.

Do not wash filter with soap or other cleaning agents. You may rinse the filter with clean water as needed.

Wash cups on top rack or by hand.

Your outer cup, inner press/cup, and locking lid are top rack dishwasher safe, otherwise wash by hand with warm, soapy water. Wash before first use.

Storing your GRAYL.

When storing for an extended period, separate, clean, and thoroughly dry all parts before storing.

We have you covered.

Filter Lifespan

The lifespan of the filter varies with the quality of your water source. High levels of sediment in the water will shorten the life span of the filter. When using clear water, the filter will last about **300 cycles (40gal / 150L)** – about three uses per day for three months. Use beyond filter capacity diminishes filtration effectiveness and may result in drinking unsafe water. If water flow rate is noticeably slower than usual then the filter should be replaced.

Warranty

Your GRAYL is accompanied by a one (1) year warranty covering workmanship and materials. For replacement information please contact us at: www.thegrayl.com/customer-service.

Care Between Uses

Cartridges can last up to a year after opening if cared for properly between uses. Activated carbon, which removes many chemicals and heavy metals, can degrade over time. To limit the degradation of filter media, air dry completely and place in an air-tight bag.

Parts and Contact Information

For replacement parts, filters, performance ratings, frequently asked questions, or to contact us with questions or comments, please visit us at, www.grayl.com

International Manuals

Manuales / Manuels / Manuali / Handbücher
www.thegrayl.com/manuals

thegrayl.com

GRAYL

Seattle USA