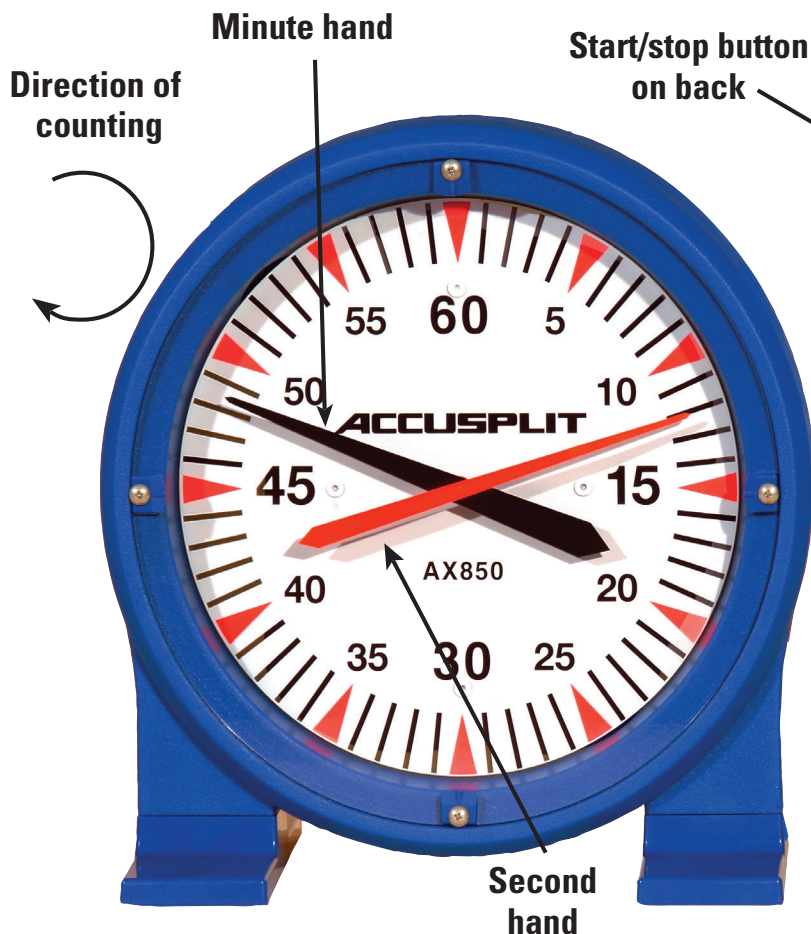


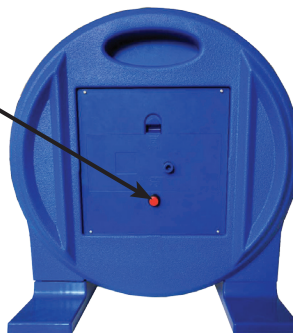
# AX850 PACE CLOCK

## Operating Instructions

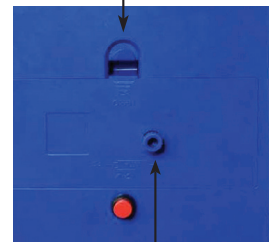
The AX850 is a large-format pace clock suitable for indoor and outdoor use. It is a "count up" timer with one second resolution to 60 minutes. The clock continues to count after passing 60 minutes each time.



Start/stop button on back



To open battery door push down here



Adjustment knob head for setting/resetting

### Installing the Battery

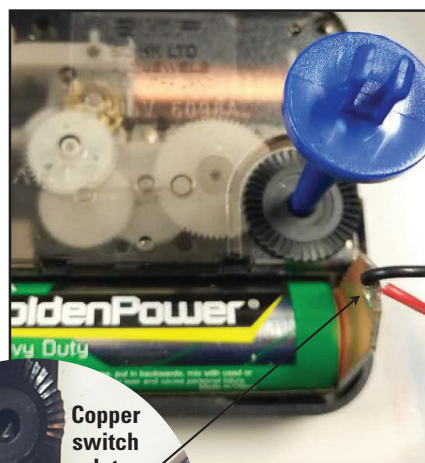
1. First, remove the adjustment knob head prior to opening the battery door. Remove the battery door by pushing door tab down and pull toward you. The adjustment knob stem will remain in the motor slot when door is opened.
2. First, insert LR6 (AA) battery with + (Positive) end into left end, then be sure copper switch plate (end tip of wire) is between - (Negative) end of battery and - (Negative) side of battery holder and press battery into position.
3. Replace battery door, making sure the adjustment knob stem protrudes thru the door hole. Reattach the adjustment knob head to the stem.

### Operating the Clock

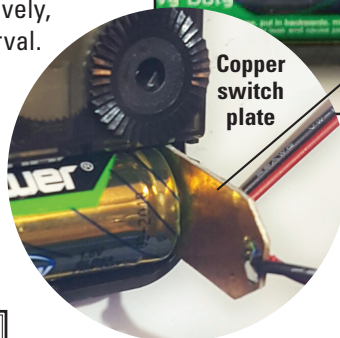
To start or stop the clock, press the Red Start/Stop button that has been relocated to the back of clock to avoid pool splash.

### Setting & Resetting the Clock

To set clock, turn the adjustment knob in the back door until the clock face shows desired time. The adjustment knob controls the black minute hand only. The red second hand is controlled by the Start/Stop button. Use the Start/Stop button to move it into desired starting position. Normally, users set the clock back to zero before use. Alternatively, you can set the clock to a specific time to provide a timing interval. (For example, to time a 20 minute interval, set the minute hand at 40 and start the clock. When the clock (minute hand) reaches 60, your 20 minute interval is up.)



adjustment knob stem



Copper switch plate

#### 5 YR. PROOF-OF-PURCHASE LIMITED WARRANTY

After 90 days, service available for a small fee until at least 5 years after date of purchase. See details at <https://accusplit.com/pages/service-support>



800-935-1996 • 925-290-1900 • FAX 925-290-1930  
<https://accusplit.com/pages/service-support> • support@ACCUSPLIT.com

### For Stability

Install feet onto the Stainless Steel pads and tighten with 4 screws (included).

### Specifications:

- Analog, New 12-inch Index Face, is easier to see than our old 9.5" Index Face on our 15" dial.
- Count up from zero to 60 and repeat
- Rugged ABS plastic case designed for outdoor use
- Safe for use in damp & wet environments (Do not submerge)
- Push button on/off

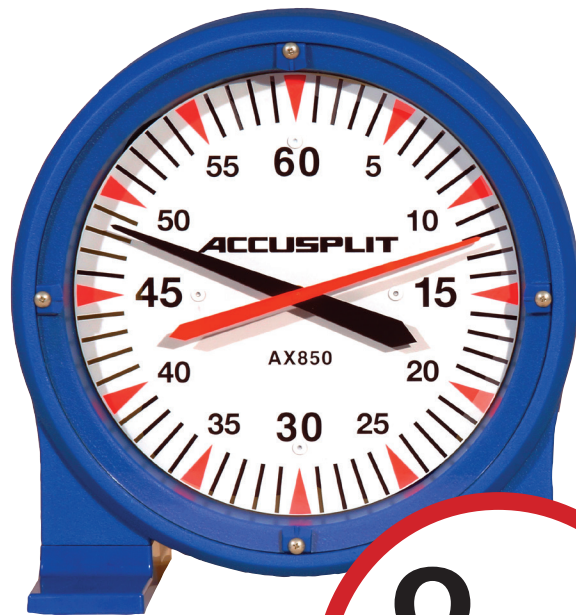
# Don't waste money paying for dimensional weight shipping **AX850**

Out with the old and in with the new, sleek,  
slim design that can ship by actual weight.



actual  
weight  
**11 lbs**

~~**27 lbs**~~  
shipping weight



actual  
weight  
**7.4 lbs**

**8 lbs**  
shipping weight

We enlarged the **NEW Index Face** by 26% (9.5 in → 12 in)  
while reducing the **Case Size** by 29% (23 in → 16.25 in)  
and creating an actual shipping weight design.