



PASADENA VANITY COLLECTION

- DAX-PAS012411
- DAX-PAS012412
- DAX-PAS012413
- DAX-PAS012427
- DAX-PAS012474
- DAX-PAS012481
- DAX-PAS012811
- DAX-PAS012812
- DAX-PAS012827
- DAX-PAS012874
- DAX-PAS012881
- DAX-PAS013211
- DAX-PAS013212
- DAX-PAS013213
- DAX-PAS013227
- DAX-PAS013274
- DAX-PAS013281
- DAX-PAS013611
- DAX-PAS013612
- DAX-PAS013613
- DAX-PAS013627
- DAX-PAS013674
- DAX-PAS013681
- DAX-PAS014011
- DAX-PAS014012
- DAX-PAS014013
- DAX-PAS014027
- DAX-PAS014074
- DAX-PAS014081
- DAX-PAS014811
- DAX-PAS014812
- DAX-PAS014813
- DAX-PAS014881

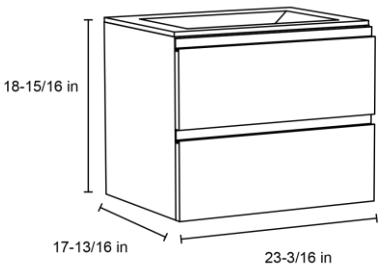


Questions? Before returning to your retailer, call our customer service department at 1-888-685-8236 or email us at cs@daxib.com. You can also visit our website at www.daxib.com.

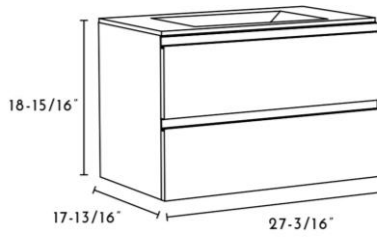


SPECS DRAWING

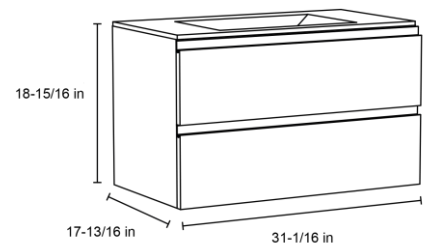
24"



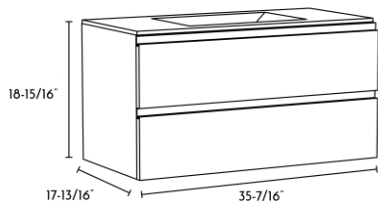
28"



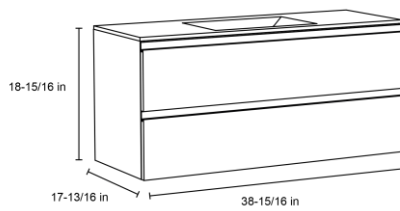
32"



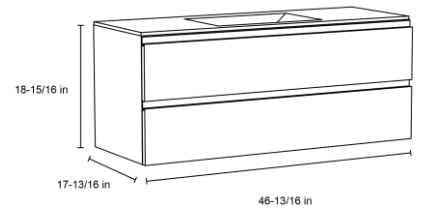
36"



40"



48"





FEATURES:

- Soft close drawers
- Interior of the drawer linen like textured melamine finish
- Adjustable front drawer
- Hettich drawer sliding system
- Onix ceramic basin included
- Made in Spain

COLORS:

White



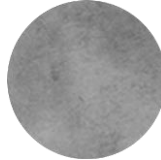
Pine



Wenge



Cement



Matt White



Matt Mink



ONIX BASIN SIZES:

- 24 Inches
- 28 Inches
- 32 Inches
- 36 Inches
- 40 Inches
- 48 Inches

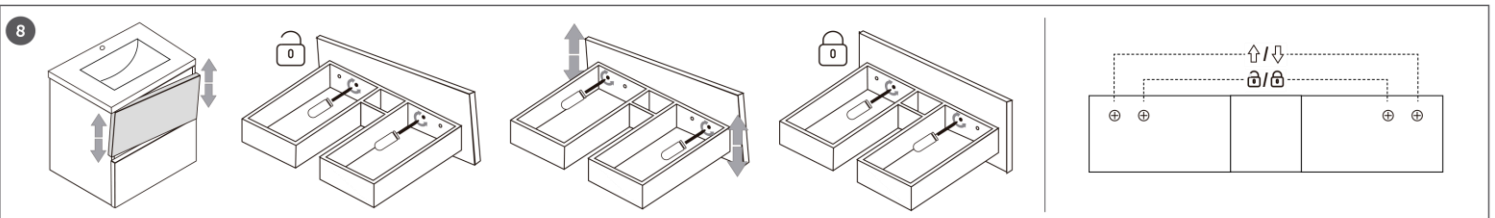
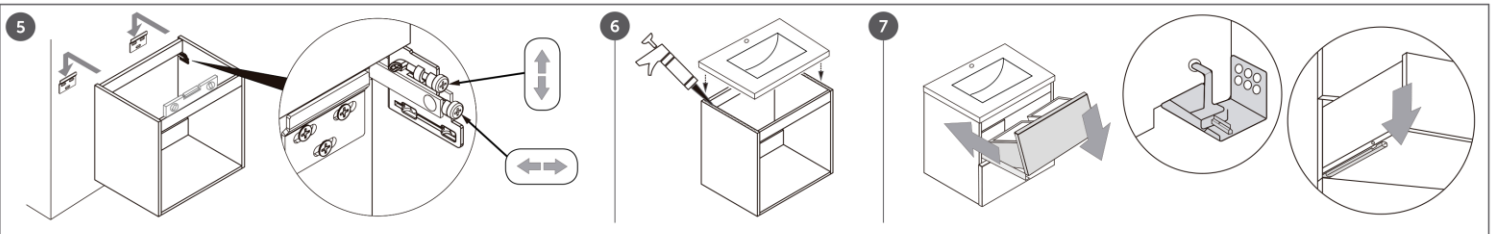
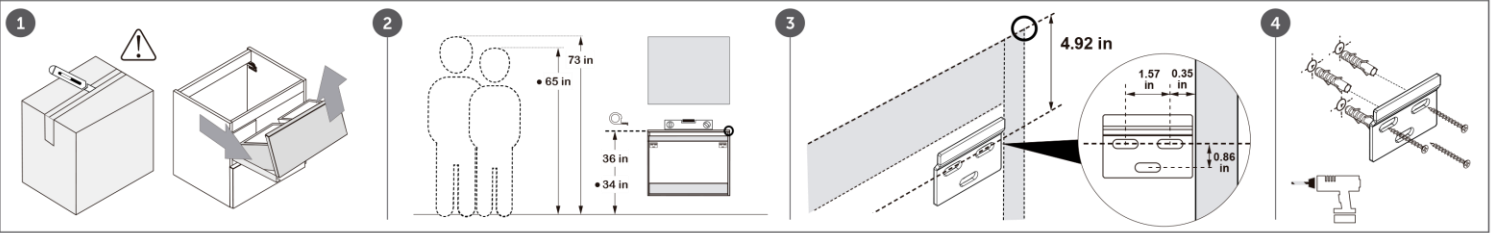


INSTALLATION INSTRUCTIONS

· PRUDENCE · PRECAUCIÓN · CAUTION

· AVANT DE COMMENCER · ANTES DE EMPEZAR · BEFORE BEGINNING

INSTRUCTIONS INSTRUCCIONES INSTRUCTIONS



FRANÇAIS

Nos produits sont conçus exclusivement pour une utilisation intérieure. Pour l'assemblage des pièces fournies séparément, suivez attentivement ce manuel. La stabilité et la capacité de nos produits sont garantis uniquement en conformité avec ces instructions. Des étagères ou des sommets ne sont pas considérés comme une surface de travail. Nous fournissons des vis d'extension pour le montage mural de meubles. Abstenez-vous de ou monter sur les meubles, étagères ou tiroirs. Ne pas accrocher sur les portes ou tiroirs. Pas de portes ou des tiroirs ouverts différents en même temps. Soyez prudent avec les composants de verre ou de miroir. Ne placez pas de meuble près d'une source de chaleur supérieure à 45° C. La garantie ne couvre pas les abus.

Avertissement: Cette documentation est seulement indicative. Si vous avez des questions sur le montage du mobilier ou de nettoyage, contactez votre point de vente. La société décline toute responsabilité résultant d'une utilisation inappropriée du produit.

Entretien et nettoyage: Il est conseillé de nettoyer les meubles avec un détergent neutre et sécher immédiatement avec un chiffon doux. Ne pas utiliser d'alcool, solvant ou peuvent contenir des abrasifs base.

ESPAÑOL

Nuestros productos están diseñados exclusivamente para espacios interiores. Para el montaje de las piezas que se suministran por separado, seguir atentamente el presente manual. La estabilidad y la capacidad de nuestros productos están garantizadas exclusivamente en el cumplimiento de estas instrucciones. Los estantes o partes superiores no son considerados como una superficie de trabajo. Suministramos tornillos de expansión para una fijación a la pared de los muebles. Abstenerse de sentarse o subirse sobre los muebles, estantes o cajones. No colgarse de puertas o cajones. No abrir diferentes puertas o cajones al mismo tiempo. Tenga cuidado con los componentes de cristal o espejo. No coloque los muebles cerca de una fuente de calor superior a 45° C. La garantía no cubre el uso indebido.

Advertencia: Esta documentación es únicamente indicativa. Si tiene dudas sobre cómo montar el mueble o limpiarlo, contacte con su punto de venta. La empresa declina toda responsabilidad derivada de un uso incorrecto del producto.

Mantenimiento y limpieza: Se aconseja limpiar los muebles con detergentes neutros y secar inmediatamente con un paño suave. No utilizar productos de base alcohólica, solvente o que puedan contener sustancias abrasivas.

ENGLISH

Our products are designed unique and exclusively for inside use, as complement of other furniture or support or closets for light materials. They are not suitable for an outside use. For the assembly of those parts that are supplied separately, please ready carefully the present manual. The stability and capacity of our products will be exclusively guaranteed within the fulfillment of these guide. The shelves or top parts cannot be considered as a working surface so please refrain from any misuse. We supply expansion screws for a wall fixing of our units. Please refrain from sitting or standing over the units, shelves or drawers as this will cause major damage. Do not hang from doors or drawers. Do not open different doors or drawers at the same time. Be extremely careful with glass or mirror components. Do not place the units near any heat source superior to 45° C. Warranties do not cover misuse.

Notice: All data in this documentation are only indicative, the aim being to describe the product. If you have questions about how to assemble the furniture or cleaning, contact your point of sale. The company assumes no liability resulting from misuse of the product.

Maintenance & cleaning: We do not recommend the use of any chemical cleaning products with our furniture. We only recommend the use of warm mild soapy. Water and a soft lint free cloth.

Our products are designed uniquely and exclusively for inside use, as a complement to other furniture or support or closets for light materials.

They are not suitable for outside use. For the assembly of those parts that are supplied separately, please read carefully the present manual. The stability and capacity of our products will be exclusively guaranteed within the fulfillment of this guide. The shelves or top parts cannot be considered as a working surface so please refrain from any misuse. We supply expansion screws for wall fixing of our units. Please refrain from sitting or standing over the units, shelves, or drawers as this will cause major damage. Do not hang from doors or drawers. Do not open different doors or drawers at the same time. Be extremely careful with glass or mirror components. Do not place the units near any heat source superior to 45 ° C. Warranties do not cover misuse.

Notice: All data in this documentation are only indicative, the aim being to describe the product. If you have questions about how to assemble the furniture or clean, contact your point of sale. The company assumes no liability resulting from misuse of the product.

Maintenance & cleaning: We do not recommend the use of any chemical cleaning products with our furniture. We only recommend the use of warm mild soap. Water and a soft lint-free cloth. not use any chemical cleaning products. We only recommend the use of warm, mild soapy water and soft, lint-free cloth. Wipe up spills immediately. This will prevent them from setting in and causing damage. Dry the vanity thoroughly after cleaning.

This will help to prevent moisture damage. Avoid placing hot objects on the vanity. This could cause the finish to crack or warp. Do not expose vanity to direct sunlight or extreme temperatures. This could cause the finish to fade or crack.

WARRANTY

DAX products are manufactured and tested to the highest quality standards by DAX International Brokers Inc. ("DAX").

DAX extends this warranty to the original purchaser for personal household use. The warranty is non-transferable.

DAX warrants the structure and finish of the product to be free from defects in material and workmanship under normal usage for a period of one (1) year. The warranty commences from the date of purchase by the owner or trade professional, from an authorized DAX dealer.

Any product reported to the authorized dealer or to DAX as being defective within the warranty period will be repaired or replaced with a product of equal value at the option of DAX. This warranty extends to the original owner or end-user, and is not transferable to a subsequent owner.

RESTRICTIONS

This warranty does not cover discontinued or display products, whether such items are purchased at discount outlets, unauthorized dealers, and/or sold on clearance.

This warranty does not cover instances of negligence, misuse, abuse, improper installation, carelessness, accident, hard water or mineral deposits, exposure to corrosive materials, misapplication, damages caused by improper maintenance, alteration of the product, or failure to follow care or installation instructions enclosed with your product. Avoid using abrasive cleaners such as powders, bleach, ammonia, alcohol, or chlorine. Avoid using abrasive pads, steel wool, or wire brushes, as these will damage and wear down the finish.

This warranty does not apply to Products that have not been installed or operated in accordance with instructions supplied by DAX and all applicable rules, regulations, and legislation pertaining to such installations.

This warranty does not apply unless the DAX product is installed by a fully insured and licensed trade professional. DAX insists that such professionals have experience in the installation of bathroom and kitchen manufactured goods.

This warranty does not cover labor charges or costs of removal and reinstallation of said product. This warranty does not allow recovery of incidental or consequential damages such as loss of use, delay, property damage, or other consequential damages, and DAX accepts no liability for such damages.

This warranty does not cover Marine or Outdoor Installation. Except as otherwise provided above, DAX makes no warranties, expressed or implied, including warranties of merchantability and fitness for a particular purpose, or compliance with any code.

Shipping and Handling charges will be covered for the first (1) year of the warranted replacement part or product. International shipping fees are not included.