



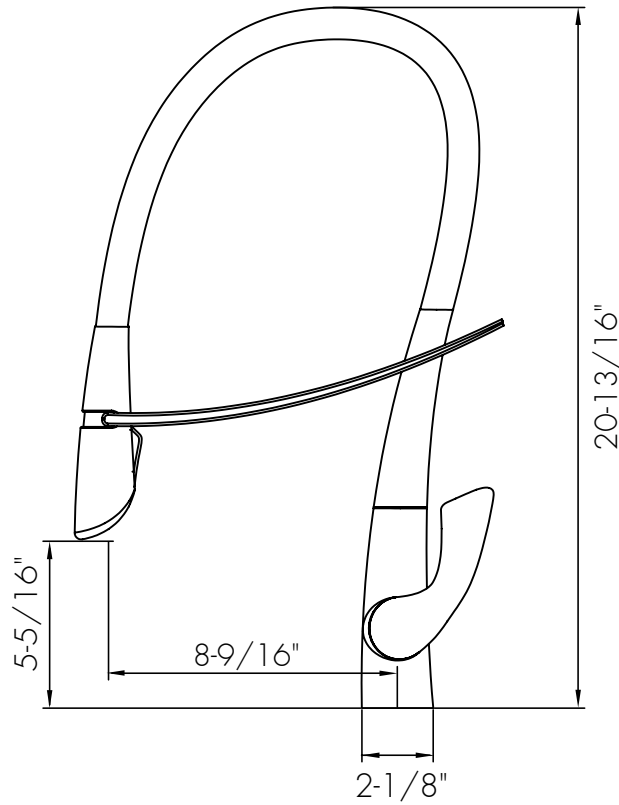
DAX-S1455



KITCHEN FAUCETS SERIES



www.daxib.com



FEATURES

- Pull out shower head
- Brushed stainless steel finish
- 304 stainless steel body casting
- Dual sprayer
- Stainless steel shower head
- Black stainless steel neck
- Ceramic cartridge
- Flow rate 2.2 GPM
- Height 20-13/16"
- Installation hole 1-3/8"
- Water lines and mounting parts included

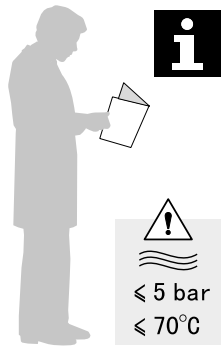




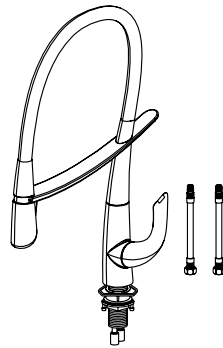
KITCHEN FAUCET DAX-S1455

MODEL	DAX-S1455
ADA	NA
UPC APPROVED	YES
ANSI APPROVED	NA
ASME APPROVED	NA
WATERSENSE CERTIFIED	NA
NSF APPROVED	YES
CONNECTION SIZE	G9/16
FAUCET HOLE SIZE	NA
FAUCETS HOLE	NA
FAUCET TYPE	Aerator-Spray
FLOW RATE (GPM)	2.2GPM
HANDLE STYLE	Side lever
NUMBER OF HANDLES	1
HOSE LENGTH	23-5/8"
INSTALLATION TYPE	Deck mount
MATERIAL	304 stainless steel
FINISH	Brushed stainless steel
PULL OUT SPRAY	Aerator-Spray
PRE-RINSE	NA
SIDESPRAY	NA
SPOUT REACH	8-9/16"
SPOUT SWIVEL	360°
SPOUT TYPE	High throw
CARTRIDGE TYPE	Ceramic
MAX DECK THICKNESS	2"
INCLUDED COMPONENTS	Water lines and mounting parts

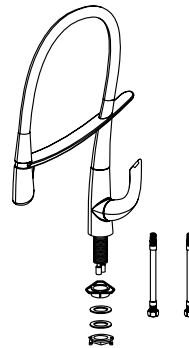




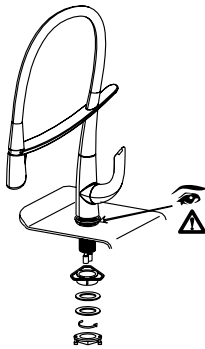
01



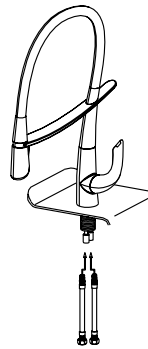
02



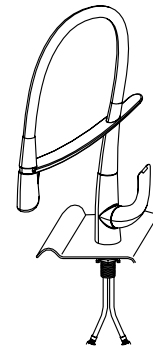
03



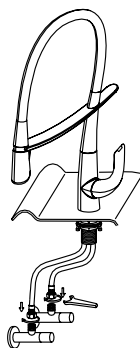
04



05



06



i

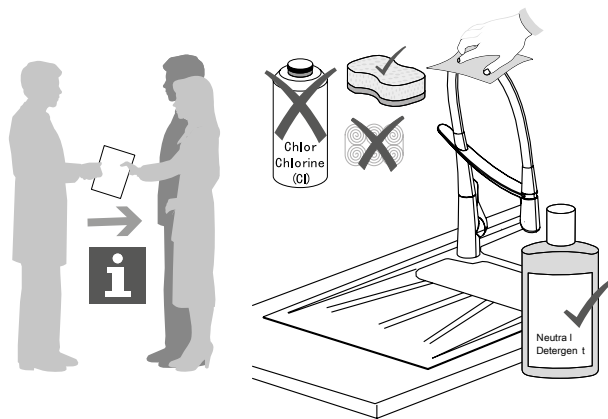
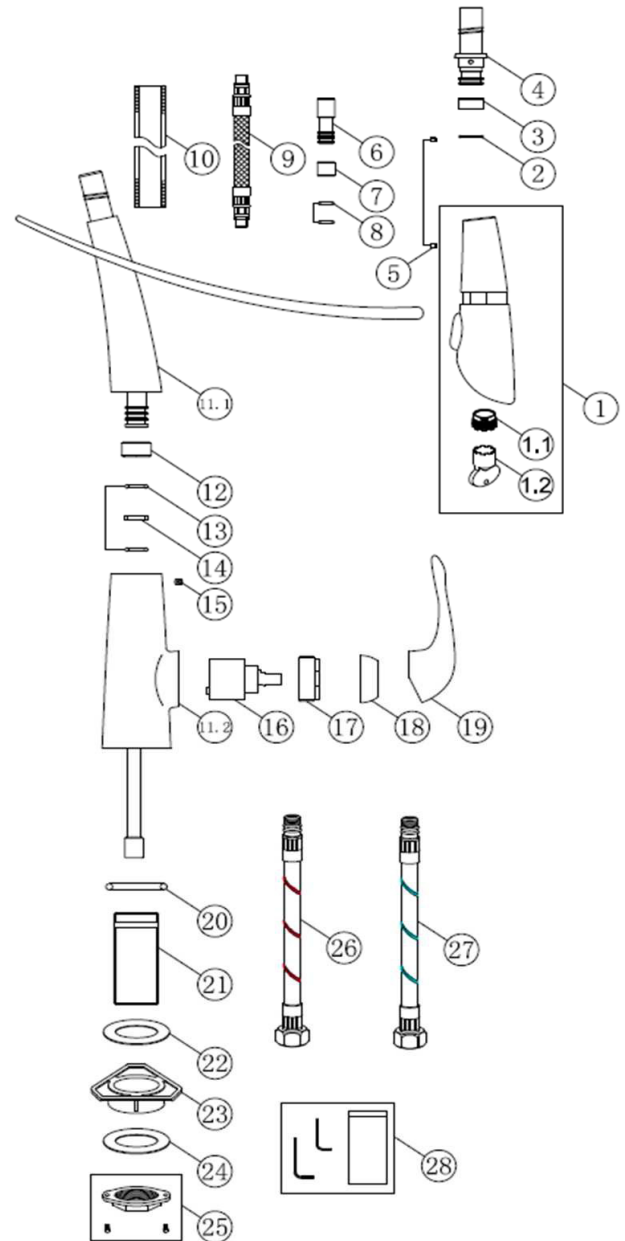




DIAGRAM NUMBER	DAX SKU	TITLE DESCRIPTION
1	190009807	Shower assembly
1.1	190006259	Aerator
1.2	190007291	Wrench
2	190008069	Rubber ring
3	190008566	Plastic
4	190004654	Connector
5	190004089	Screw
6	190008530	Mandrel
7	190003965	Plastic
8	190007367	Rubber ring
9	190006506	Hose
10	190009801	Spring,Black PVD
11	190014262	Polish assembly
11.1	190008564	Tube assembly
11.2	190008563	Body assembly
12	190001895	Sleeve,Plastic
13	190007909	Rubber ring
14	190001868	Plastic washer
15	190004443	Screw
16	190004166	Cartridge
17	190004083	Press cover
18	190013018	Cover
19	190011854	Handle assembly
20	190012502	Rubber ring
21	190000646	Bolt
22	190004111	Rubber ring
23	190002413	Plastic Fixed Set



For parts or sale requirements please contact our customer service department:

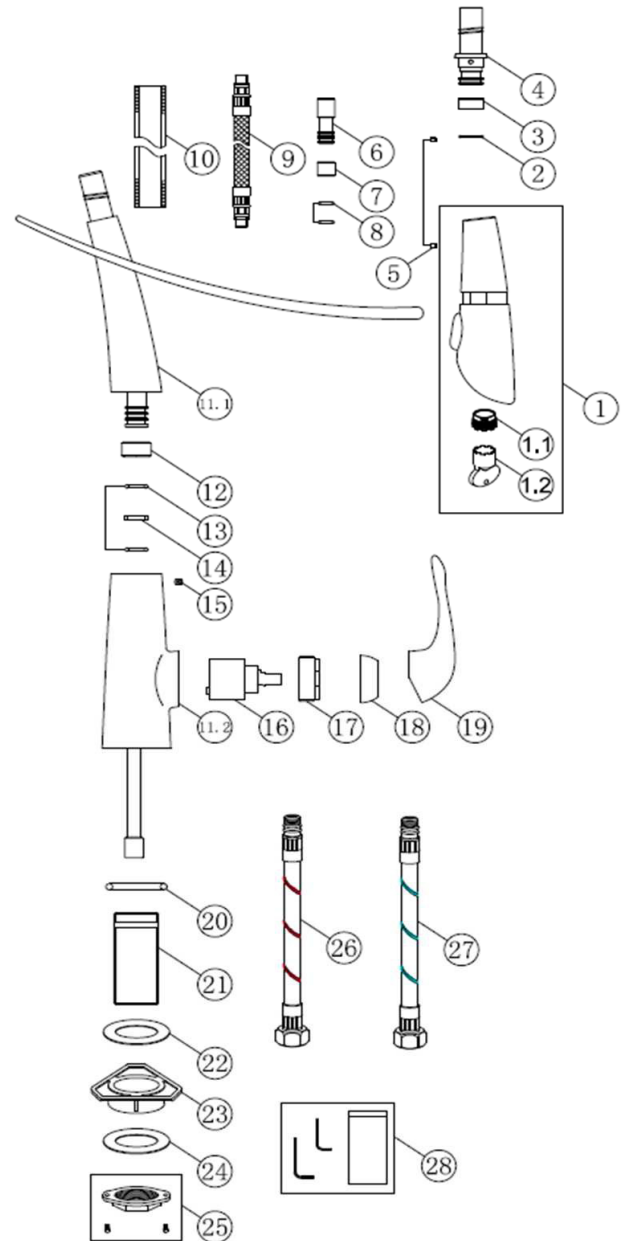
CS@daxib.com

1 888 685 8236





DIAGRAM NUMBER	DAX SKU	TITLE DESCRIPTION
24	190000798	Plate
25	190010566	Screw nut assembly
26	190012682	Hose
27	190012683	Hose
28	190011426	Allen wrench kit



For parts or sale requirements please contact our customer service department:

 CS@daxib.com

 1 888 685 8236

