



DAX-8887



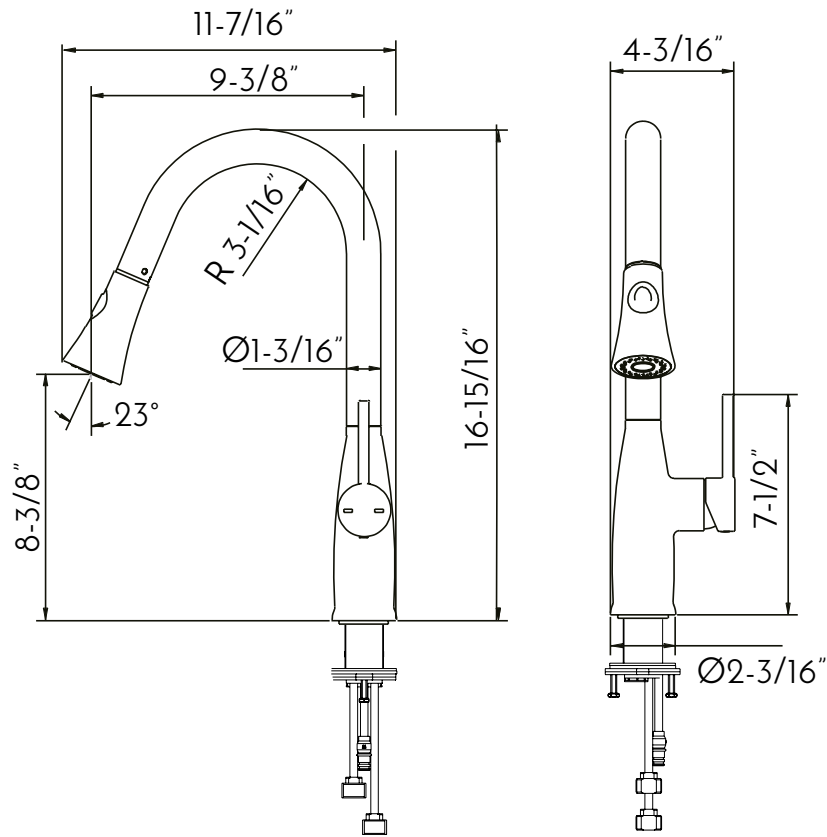
KITCHEN FAUCETS SERIES



[www.daxib.com](http://www.daxib.com)



DAX-8887



## FEATURES

- Pull down shower head
- Brushed nickel finish
- Brass body casting
- Dual sprayer
- ABS shower head
- Ceramic cartridge
- Flow rate 1.8 GPM
- Height  $16\text{-}15/16''$
- Installation hole  $1\text{-}3/8''$
- Water lines and mounting parts included





**KITCHEN FAUCET DAX-8887**

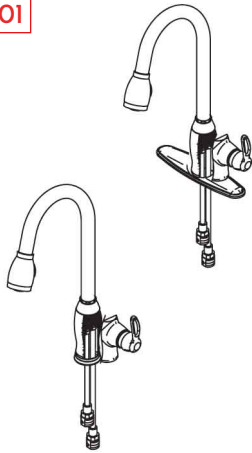
MODEL	DAX-8887
ADA	Yes
UPC APPROVED	Yes
ANSI APPROVED	Yes
ASME APPROVED	Yes
WATERSENSE CERTIFIED	Yes
NSF APPROVED	Yes
CONNECTION SIZE	1/2 Male
FAUCET HOLE SIZE	2-9/16"
FAUCETS HOLE	One
FAUCET TYPE	Kitchen
FLOW RATE (GPM)	1.8GPM
HANDLE STYLE	Modern
NUMBER OF HANDLES	1
HOSE LENGTH	20"
INSTALLATION TYPE	Quick connection
MATERIAL	Brass
FINISH	Brushed Nickel
PULL OUT SPRAY	Yes
PRE-RINSE	Yes
SIDESPRAY	No
SPOUT SWIVEL	360°
SPOUT TYPE	Swan
CARTRIDGE TYPE	Ceramic
INCLUDED COMPONENTS	Water lines and mounting parts







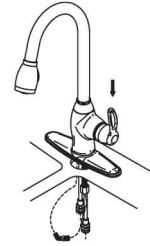
01



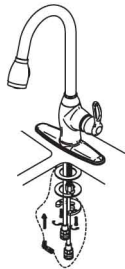
02



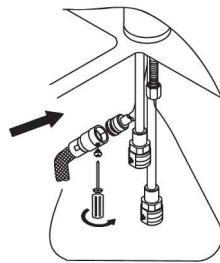
03



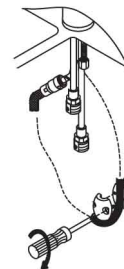
04



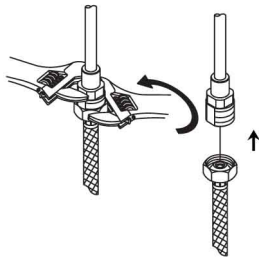
05



06



07



08

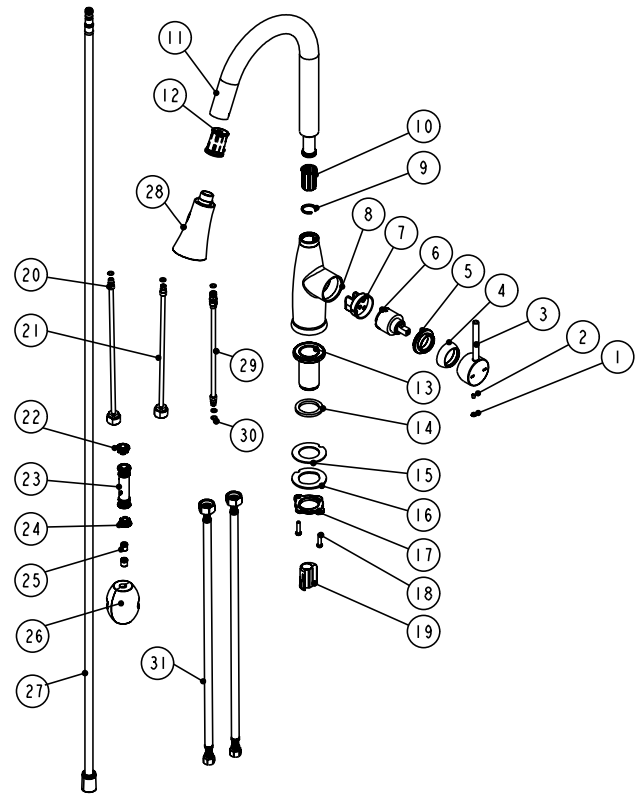


09





DIAGRAM NUMBER	DAX SKU	TITLE DESCRIPTION
1	624029	Index Button
2	642014	Screw
3	623001	Handle
4	622002	Dome Nut
5	627005	Adjustment Nut
6	626003	Cartridge
7	628002	Cartridge Base
8	612001	Faucet Body
9	625013	C-Chip
10	625007	Sleeve
11	616002	Spout
12	625015	Inner Cover
13	642072	Shank
14	625018	Connector
15	644008	Seal
16	642005	Gasket
17	640011	Lock Nut
18	642021	Screw
19	625076	Fixing Sleeve
20	634006	Copper Tube
21	634005	Copper Tube
22	625014	Chip
23	625001	Connector
24	625014	Chip
25	625016	Anti Reflux Valve
26	645001	Weight
27	633008	Spray Hose
28	635035	Shower Head
29	634007	Copper Tube
30	644007	O-ring
31	633023	SS Hose



For parts or sale requirements please contact our customer service department: [CS@daxib.com](mailto:CS@daxib.com)

1 888 685 8236

