



DAX-8325-BN

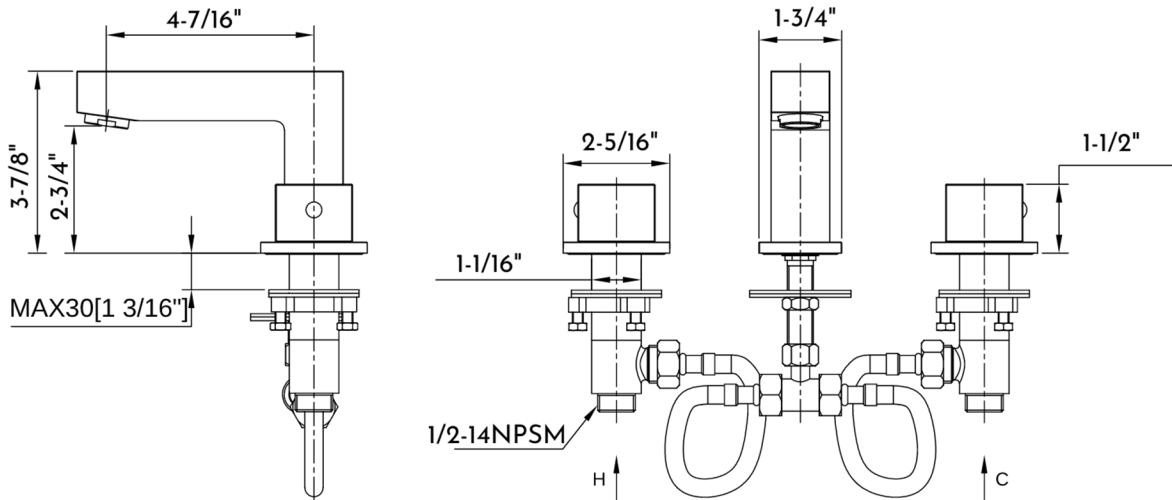
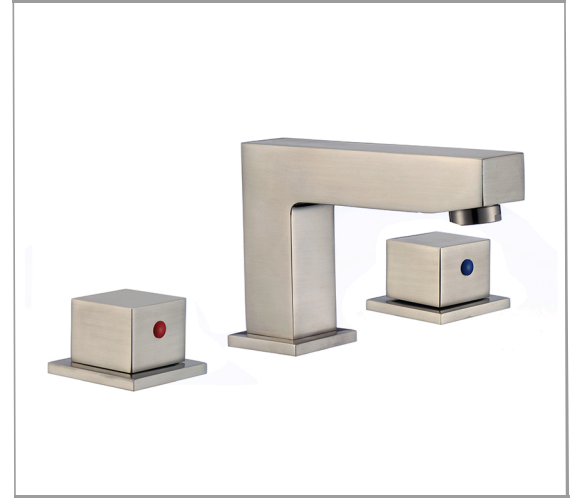


BATHROOM FAUCETS **SERIES**



## FEATURES

- Dual Handle
- Ceramic Cartridge
- Brass Body
- Flow rate: 1.5 GPM
- Installation Hole 1-3/8"
- cUPC - NSF61-9 - AB1953 Approved
- Hoses and Mounting Parts Included
- Pop Up Drain not included (Available)






**BATHROOM FAUCET DAX-8325-BN**

MODEL	DAX-8325-BN
MATERIAL	Brass
FINISH	Brushed Nickel
HEIGHT	3-7/8"
SPOUT HEIGHT	2-3/4"
SPOUT REACH	4-7/16"
FLOW RATE	1.5 GPM
HOT COLD INDICATORS	Yes
DECK PLATE INCLUDED	No
COMPATIBLE VALVE TYPE	Ceramic Cartridge
HANDLE STYLE	Dual Lever
NUMBER OF HANDLES	Two
HOSE LENGHT	11-13/16"
FAUCET HOLES	3
FAUCET HOLE SIZE	1 1/2"
INSTALATION TYPE	Deck Mounted
SPOUT SWIVEL	No
MAX DECK THICKNESS	1-3/16"

For parts or sale requirements please contact our customer service department:

 [CS@daxib.com](mailto:CS@daxib.com)

 1 888 685 8236