



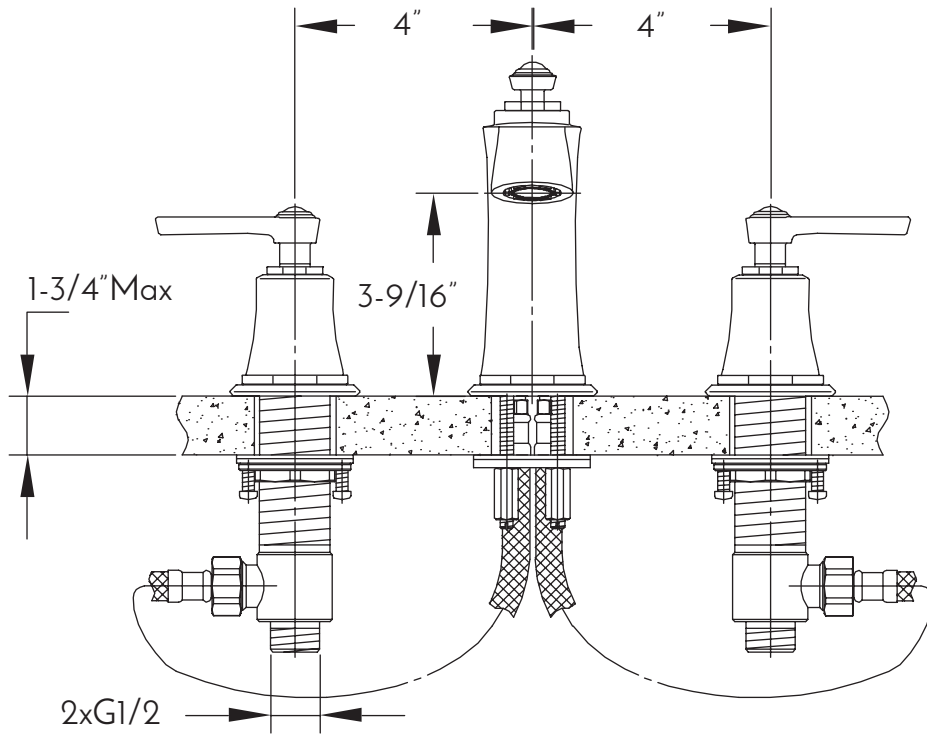
DAX-8259AC-CR



BATHROOM FAUCETS **SERIES**



www.daxib.com



FEATURES

- Two Handles
- Ceramic cartridge
- Brass body
- Flow rate 2.1 GPM
- Installation hole 1-3/8"
- Chrome finish
- Hoses and mounting parts included
- Pop up drain not included (available)





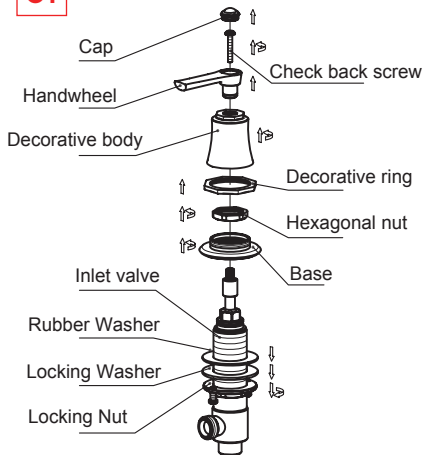
BATHROOM FAUCET DAX-8259AC-CR

MODEL	DAX-8259AC-CR
ADA	NO
UPC APPROVED	YES
ANSI APPROVED	NO
ASME APPROVED	YES
WATERSENSE CERTIFIED	NO
NSF APPROVED	NO
CONNECTION SIZE	3/8"
FAUCET HOLE SIZE	1 3/8"
FAUCETS HOLE	3
FLOW RATE (GPM)	2.1 GPM
HANDLE STYLE	Double handle
NUMBER OF HANDLES	2
HEIGHT	3-9/16"
HOSE LENGTH	NO HOSE
INSTALLATION TYPE	DECK MOUNTED
MATERIAL	Brass
FINISH	Chrome
SIDESPRAY	N/A
SPOUT HEIGHT	3-9/16"
SPOUT REACH	5-1/8"
SPOUT SWIVEL	NO
CARTRIDGE TYPE	Ceramic
POP-IP INCLUDED	NO
MAX DECK THICKNESS	1-3/4" MAX



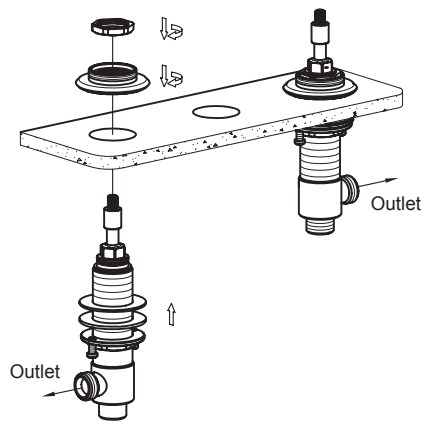


01



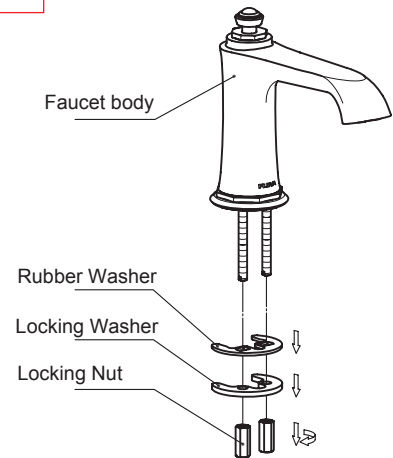
Pick out cap by a sharp point tool, remove check back screws, handwheels, decorative bodies, decorative rings, hexagonal nuts and bases from two inlet valves in turn, screw locking nuts to the bottom.

02



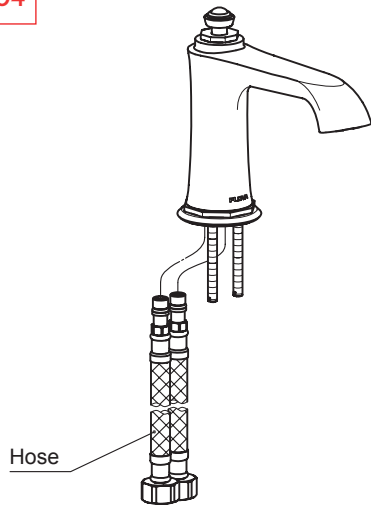
Pass two inlet valves (red on left and blue on right) from down upwards through holes of basin, keep outlets of inlet valves toward the opposite, install and tighten base, then fix hexagonal nut.

03



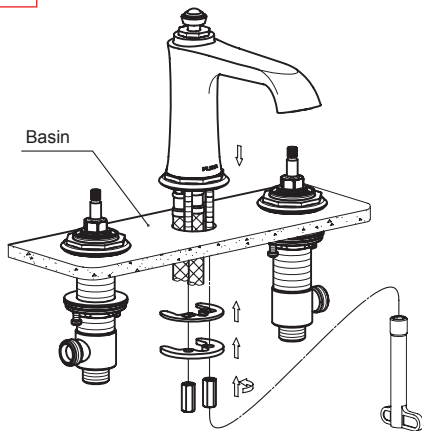
Remove locking nut, locking washer and rubber washer from faucet body.

04



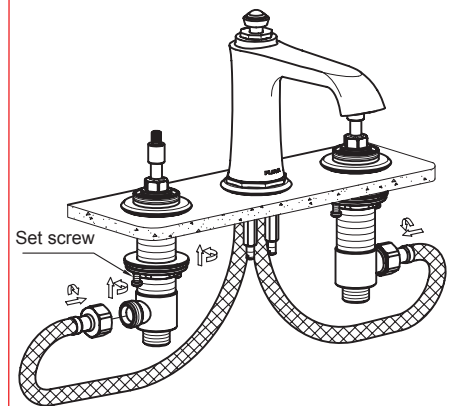
Connect hoses (Torque $\leq 5N \cdot m$) as red(hot) on left and blue(cold) on right.

05



Pass faucet body from up downwards through hole of basin, pad rubber washer and locking washer, fix with locking nuts.

06

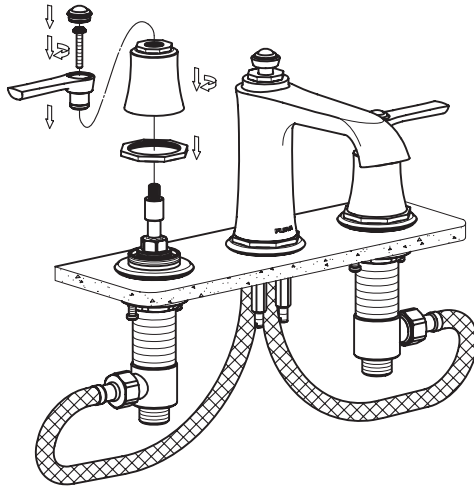


Connect hoses to inlet valves, tighten locking nuts and set screws on inlet valves in turn.



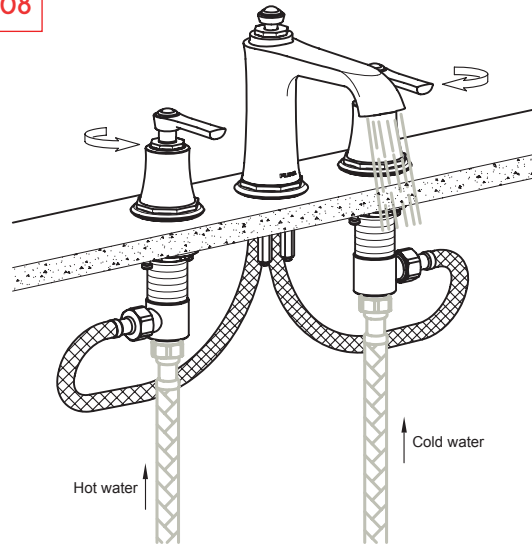


07



Pad decorative rings and tighten decorative body. Install handwheels (Note:red on left and blue on right), fix with check backscrews and insert cap.

08



After installation, flow water (hot on left and cold on right) to check if the installation is qualified. The figure displays open state of handwheels.

For parts or sale requirements please contact our customer service department:

 CS@daxib.com

 1 888 685 8236

