



DAX-8255C

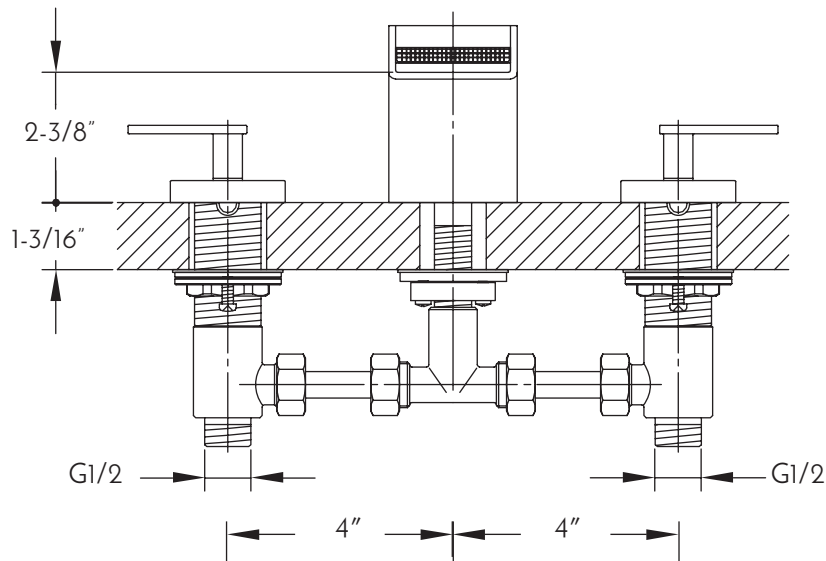


BATHROOM FAUCETS **SERIES**





DAX-8255C



## FEATURES

- Two Handles
- Ceramic cartridge
- Brass body
- Flow rate 1.2 GPM
- Installation hole 1-3/8"
- Chrome finish
- Hoses and mounting parts included
- Pop up drain not included (available)



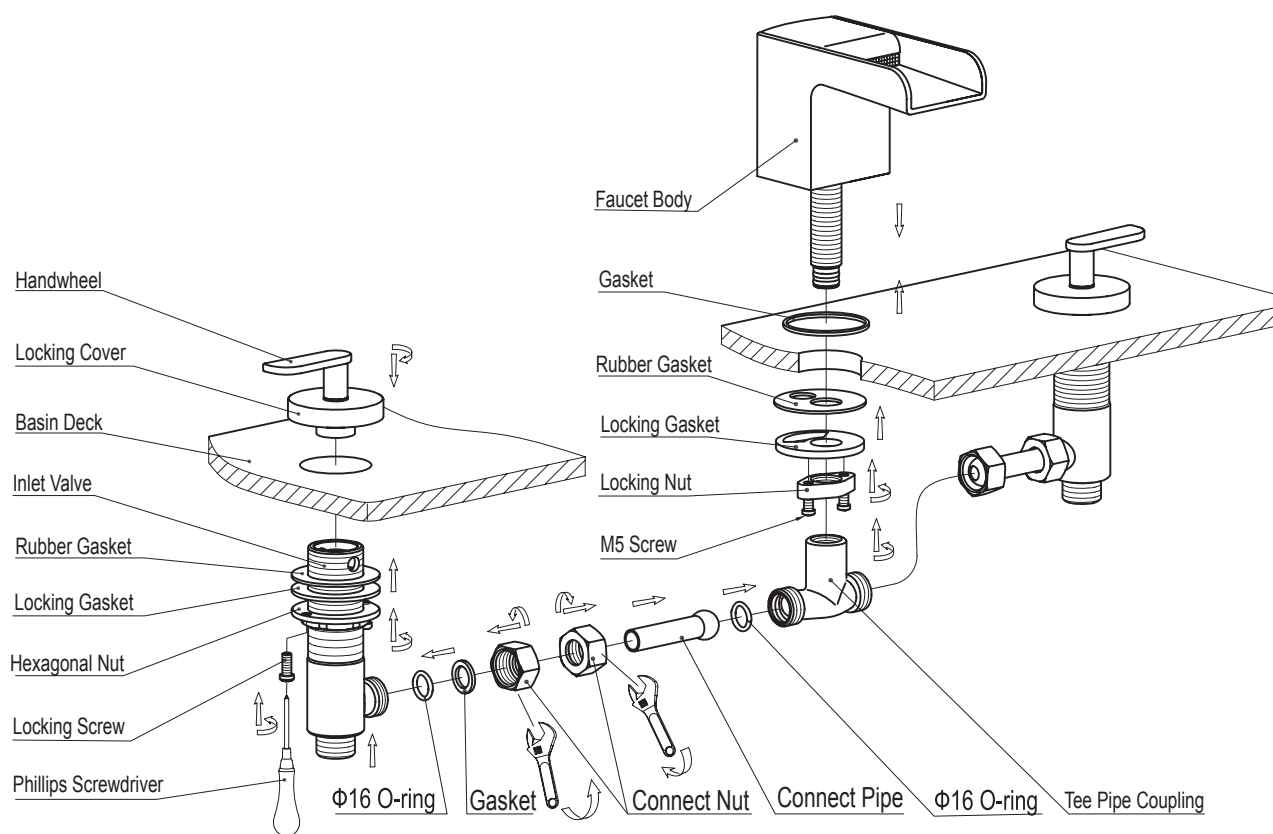


## BATHROOM FAUCET **DAX-8255C**

MODEL	DAX-8255
ADA	NO
UPC APPROVED	NO
ANSI APPROVED	NO
ASME APPROVED	NO
WATERSENSE CERTIFIED	NO
NSF APPROVED	NO
CONNECTION SIZE	G3/8
FAUCET HOLE SIZE	1-3-8"
FAUCETS HOLE	3 Holes
FAUCET TYPE	Basin Mixer
FLOW RATE (GPM)	1.2 GPM
HANDLE STYLE	Double lever
NUMBER OF HANDLES	2
INSTALLATION TYPE	Deck mounted
MATERIAL	Brass
FINISH	Chrome
SPOUT HEIGHT	2-3/8"
SPOUT SWIVEL	NO
SPOUT TYPE	Casting spout
CARTRIDGE TYPE	Ceramic
POP-IP INCLUDED	NO
MAX DECK THICKNESS	1-3/4" max





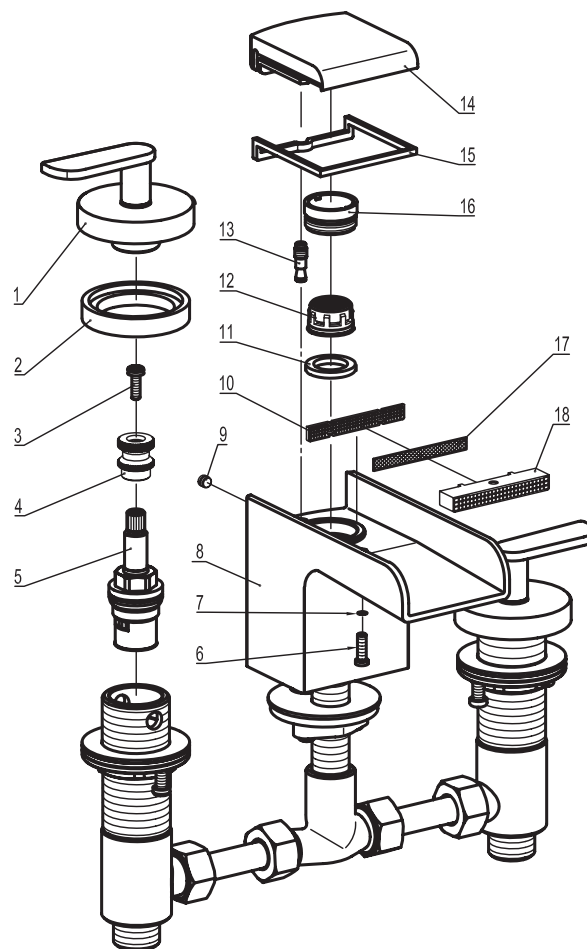


## INSTALLATION STEPS

1. Remove locking covers from the two inlet valves and take off the handwheels. Screw off the hexagonal nut to bottom. Then place the valve bottom-up through the basin deck hole (attention to red left and blue right) and keep the outlets of the two valves opposite towards each other. Then install the handwheels. Tighten the locking nut first and then the hexagonal nut. Screw them tightly with four locking nuts.
2. Remove the locking nut, locking gasket and rubber gasket off the faucet body. Put the gasket onto the faucet body and slide it up through the basin deck hole. Then put on the rubber gasket and the locking gasket. Screw the locking nut with M5 screw and screw the tee pipe coupling.
3. Connect the valves and the tee pipe coupling with the connect pipes and screw the connect nuts tightly.
4. Turn on water for inspection.



DIAGRAM NUMBER	DAX SKU	TITLE DESCRIPTION
1		Handle
2	FH 653-05	Ø 1-7/8" washer
3	FH 617-22	M4x12 Stop screw
4	FH 608-04G	Handle core
5	FH TB04/TB04A	B04F/B04G valve
6	FH 9825-09	M4 Screw
7	MF 0610	Ø4 x 1" O-ring
8		Faucet body
9	FH TJ-30504	M5 x 4 Internal Hex flat end locking screw
10	FH 9825-05	Filter
11	FH 2123-28	Spout washer
12	FH TQ41-02	Spout inner collar
13	FH 9825-08A	M6 screw rod
14	FH 9825-02A	Seal cover
15	FH 9825-03A	Rubber seal ring
16	FH TQ41-02	Spout inner collar
17	FH 9825-07	Filter
18	FH 9825-06	Water segregator



For parts or sale requirements  
please contact our customer service department:



CS@daxib.com



1 888 685 8236