

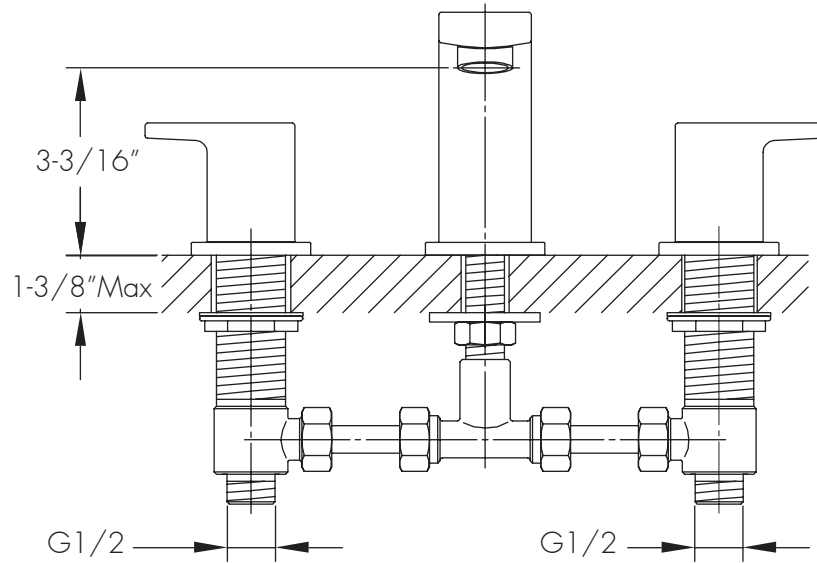


DAX-8239C



BATHROOM FAUCETS SERIES





## FEATURES

- Two Handles
- Ceramic cartridge
- Brass body
- Flow rate 1.2 GPM
- Installation hole 1-3/8"
- Chrome finish
- Hoses and mounting parts included
- Pop up drain not included (available)



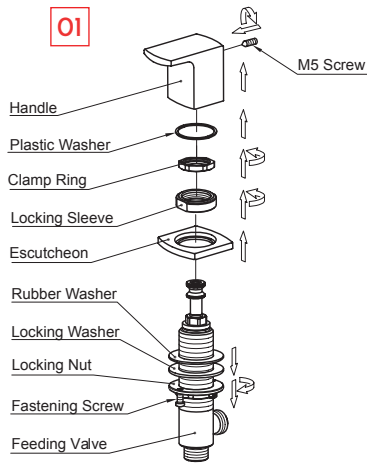


BATHROOM FAUCET **DAX-8239C**

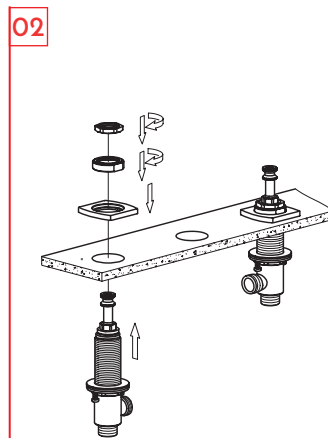
MODEL	DAX-8239C
ADA	NO
UPC APPROVED	NO
ANSI APPROVED	NO
ASME APPROVED	NO
WATERSENSE CERTIFIED	NO
NSF APPROVED	NO
CONNECTION SIZE	G3/8
FAUCET HOLE SIZE	1-3-8"
FAUCETS HOLE	3 Holes
FAUCET TYPE	Basin Mixer
FLOW RATE (GPM)	1.2 GPM
HANDLE STYLE	Double lever
NUMBER OF HANDLES	2
INSTALLATION TYPE	Deck mounted
MATERIAL	Brass
FINISH	Chrome
SPOUT HEIGHT	3-3/16"
SPOUT SWIVEL	NO
SPOUT TYPE	Casting spout
CARTRIDGE TYPE	Ceramic
POP-IP INCLUDED	NO
MAX DECK THICKNESS	1-3/4" max



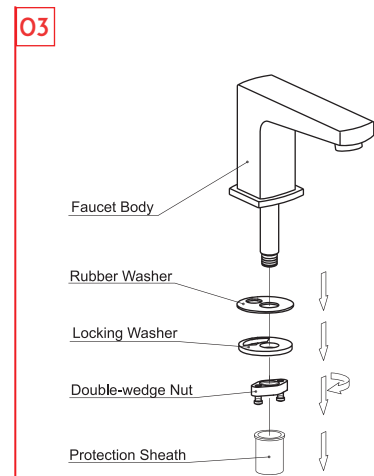




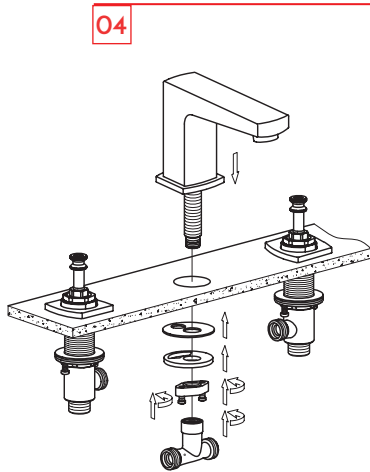
Loosen M5 screw. Remove by turning the handle, plastic washer, clamp ring, locking sleeve and escutcheon from two feeding valves. Screw off the locking nut to the bottom.



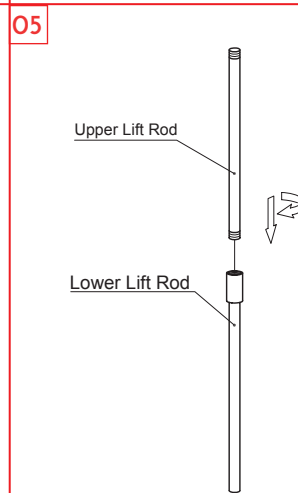
Place two feeding valves through lavatory deck hole. Keep outlets towards each other. Put on escutcheon. Screw the locking sleeve. Then tighten with fastening screw.



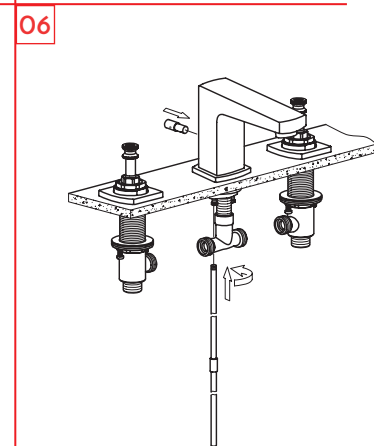
Remove the protection sheath, double-wedge nut, locking washer and rubber washer from the faucet body.



Place the faucet body through lavatory hole. Pad the rubber washer and locking washer. Tighten the double-wedge nut and tighten with fastening screw. Then screw the T-joint.



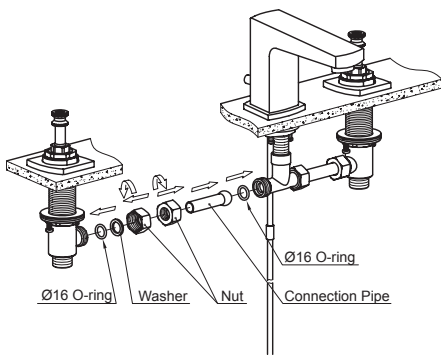
Connect the upper lift rod and lower lift rod.



Insert the nut into the slot in the faucet body. Connect the lift rod.

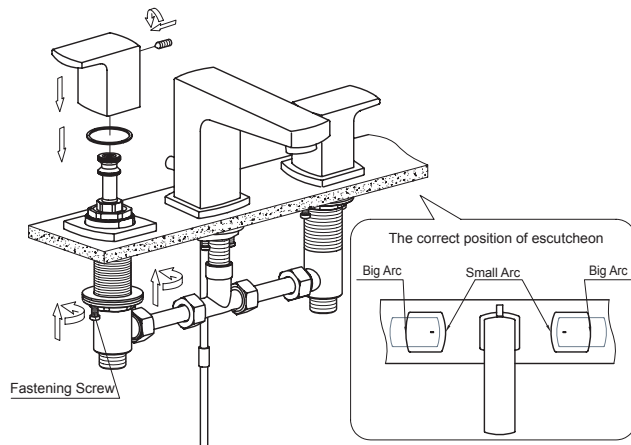


07



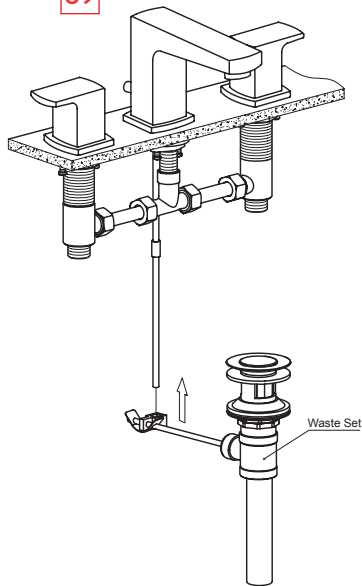
Use connection tubes to connect left and right feeding valves and T-joint. Tighten nuts.

08



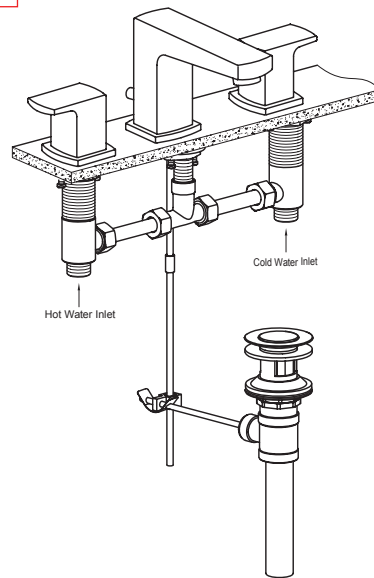
Adjust escutcheon as shown in diagram. Screw the locking nuts and fastening screws tightly on feeding valves. Then put on plastic spacer and handle (red left and blue right.). Tighten M5 screw.

09



Connect the lift rod and waste set.

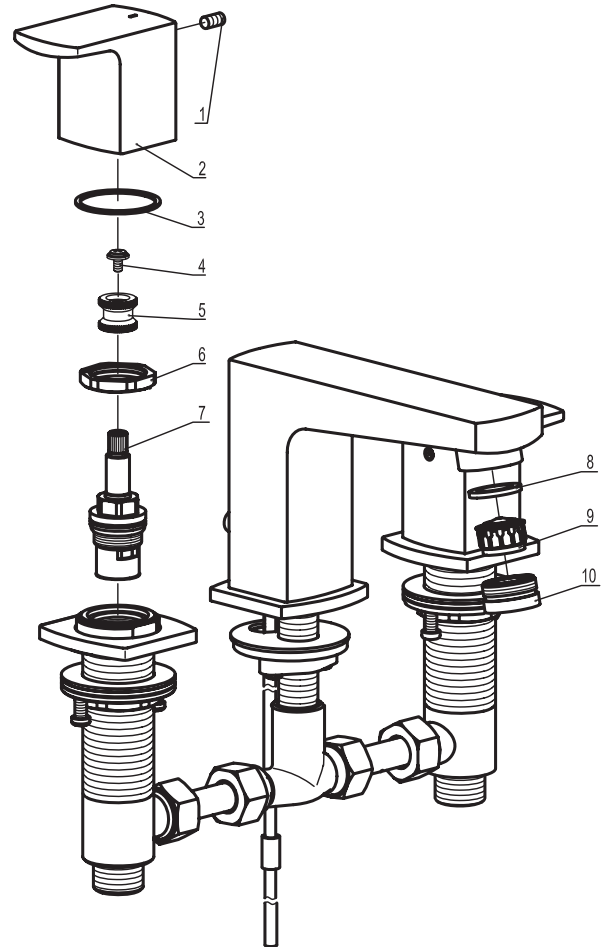
10



Finish the installation (turn on water for inspection)



DIAGRAM NUMBER	DAX SKU	TITLE DESCRIPTION
1	FH TJ-40513	M5x13 hexagon socket cone point set screw
2	FH 635-01	Handle
3	FH 635-02	Plastic washer
4	FH T-02A	M4 stop screw
5	FH 628-02A	Handle core
6	FH T-68	Lock hex nut
7	FH TB04A/TB04	B04A/B04 head valve
8	FH 2123-28	Spout washer
9	FH TQ-07G	M24 aerator
10	FH TQ41-02	Spout inner collar



For parts or sale requirements please contact our customer service department:

 [CS@daxib.com](mailto:CS@daxib.com)

 1 888 685 8236