

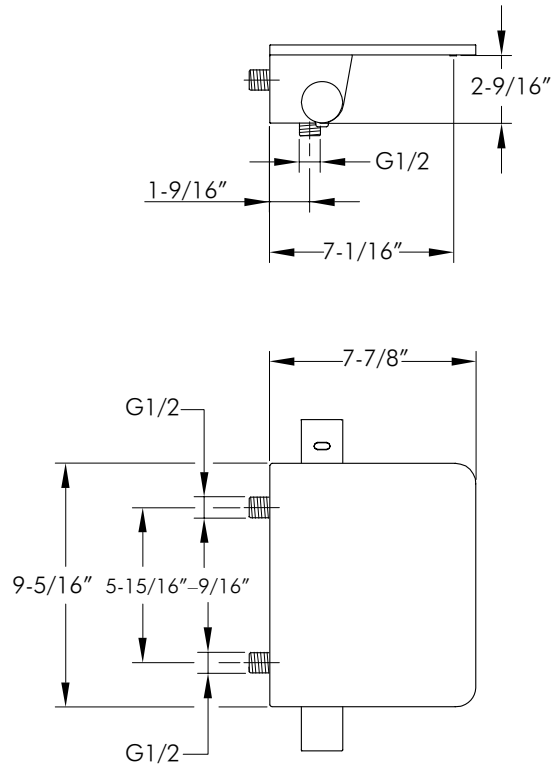


DAX-8190



BATHTUB FILLERS **SERIES**





## FEATURES

- Wall mount
- Brass body
- Chrome finish
- Thermostatic valve
- Anti-scalding protection
- Ceramic cartridge
- Flow rate 2.0 GPM
- Mounting parts and water lines included





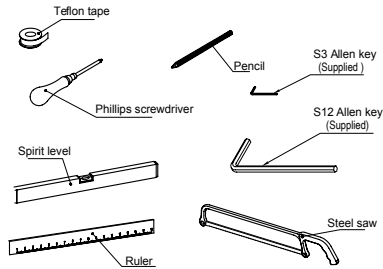
**BATHTUB FILLER DAX-8190**

MODEL	DAX-8190
HAND SHOWER FLOW RATE (GPM)	2.0 GPM
SHOWER HEAD FLOW RATE (GPM)	2.0 GPM
ROUGH-IN VALVE FLOW RATE (GPM)	2.0 GPM
ANTI-SCALDING PROTECTION	YES
MATERIAL	Brass
THERMOSTATIC	YES
VALVE INCLUDED	YES
FINISH	Chrome



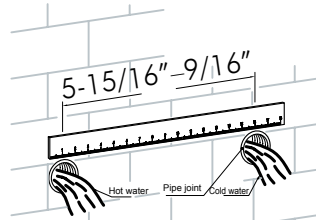


01



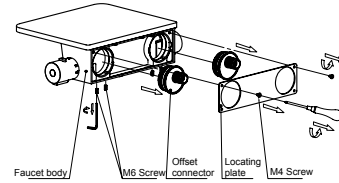
Prepare and check the following tools.

02



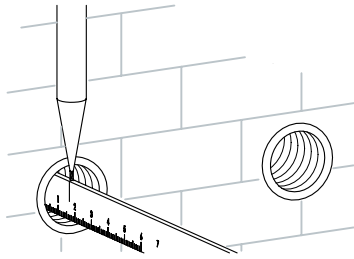
Lay hot and cold water pipes in the wall about 600mm above the floor, with hot on left and cold on right and 150mm distance between them. Run water to get rid of dirt in pipes.

03

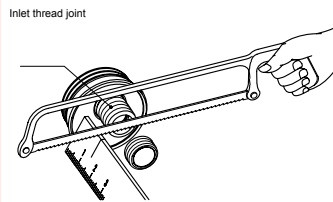


Unscrew two M4 screws and loosen M6 screws from faucet body by phillips screwdriver, take off locating plate and offset connectors.

04

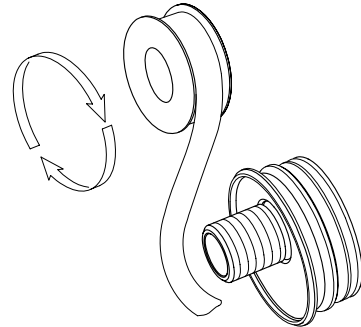


05



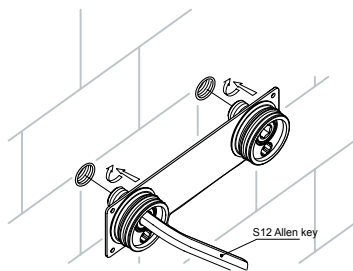
Measure thread depth of inlet thread joint of offset connectors by ruler, the depth must be less than that of pipe joint, or saw the longer part off by steel saw.

06



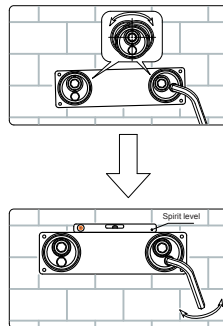
Wrap two offset connectors with teflon tape.

07



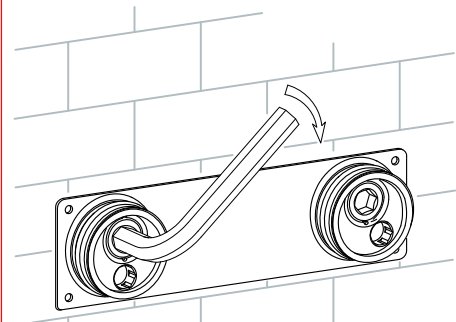
Place two offset connectors through locating plate and screw them into pipe joint, slightly tighten inlet thread joint by S12 allen key.

08



Adjust offset connectors with S12 allen key till locating plate in level position, then check by spirit level..

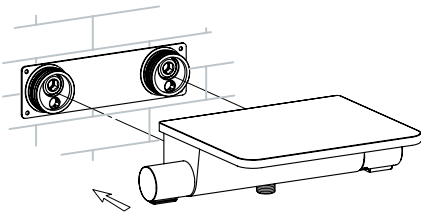
09



Tighten inlet thread joint with S12 allen key.

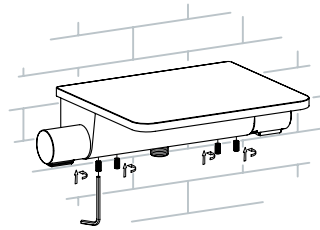


10



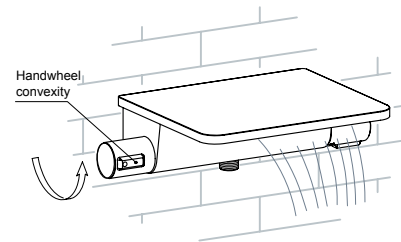
Install faucet body onto two offset connectors.

11



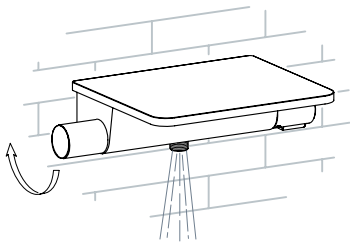
Make sure faucet body close to the wall, then tighten M6 screws.

12



Run water to check if the installation is qualified. The figure is handwheel convexity towards the front, water runs from waterfall.

13



Turn handwheel convexity to the back, water runs from shower connection.

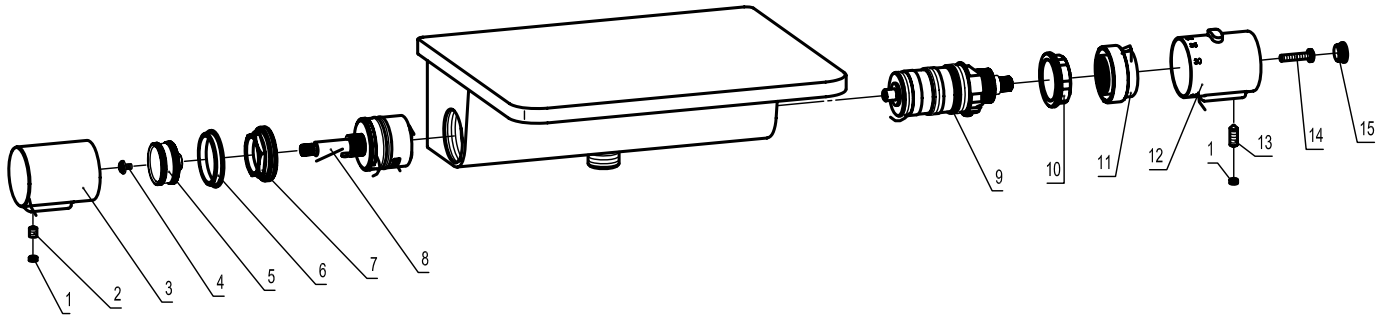


DIAGRAM NUMBER	DAX SKU	TITLE DESCRIPTION
1	FH 8465-10	Plug nut
2	FH TJ-40507	M5X7 Internal Hex flat end locking screw
3	FH 672-02	Handle
4	FH T-02A	Stop screw
5	FH 631-03D	Handle core
6	FH 617-23	Plastic isolated ring
7	FH 8458-02A	Locknut
8	FH TE01C	Diverter cartridge
9	FH HW-V	Vernet cartridge
10	FH 8307-05B	Locknut
11	FH 617-15E	Limit snap ring
12	FH 672-01	Handle
13	FH TJ-40514	M5X14 Internal Hex flat end locking screw
14	FH TL-60420	M4X20 Cross recessed self-drilling locking screw
15	FH 619-03	Plug

For parts or sale requirements please contact our customer service department:



CS@daxib.com



1 888 685 8236