



DAX-8104-CR

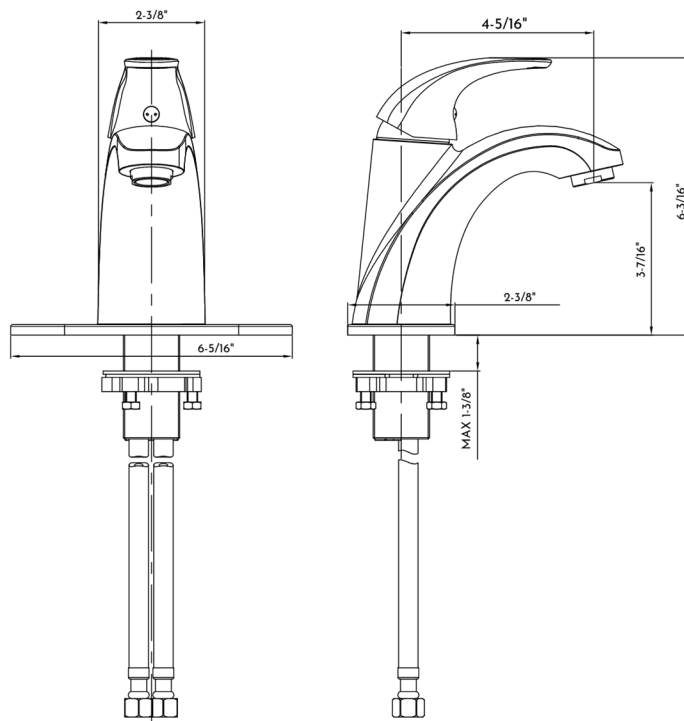
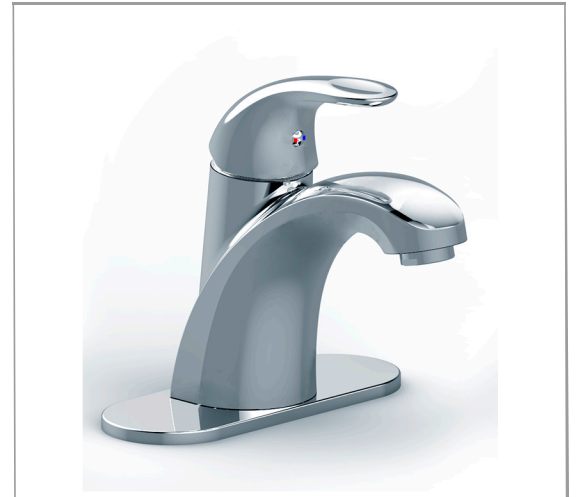


BATHROOM FAUCETS **SERIES**



FEATURES

- Single Lever
- Ceramic Cartridge
- Chrome Nickel Finish
- Flow rate: 1.5 GPM
- Lead Free
- cUPC - NSF61-9 - AB1953 Approved
- Hoses and Mounting Parts Included
- Pop Up Drain Not Included (Available)





BATHROOM FAUCET **DAX-8104-CR**

| | |
|-----------------------|-------------------|
| MODEL | DAX-8104-CR |
| MATERIAL | Brass |
| FINISH | Chrome Nickel |
| HEIGHT | 6-3/16" |
| SPOUT HEIGHT | 3-7/16" |
| SPOUT REACH | 4-5/16" |
| FLOW RATE | 1.5 GPM |
| HOT COLD INDICATORS | Yes |
| DECK PLATE INCLUDED | Yes |
| COMPATIBLE VALVE TYPE | Ceramic Cartridge |
| HANDLE STYLE | Single Lever |
| NUMBER OF HANDLES | One |
| HOSE LENGHT | 27-9/16" |
| FAUCET HOLES | One |
| FAUCET HOLE SIZE | 1-3/8" |
| INSTALATION TYPE | Deck Mounted |
| SPOUT SWIVEL | No |
| MAX DECK THICKNESS | 1-3/8" |

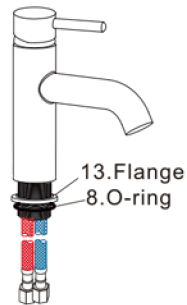
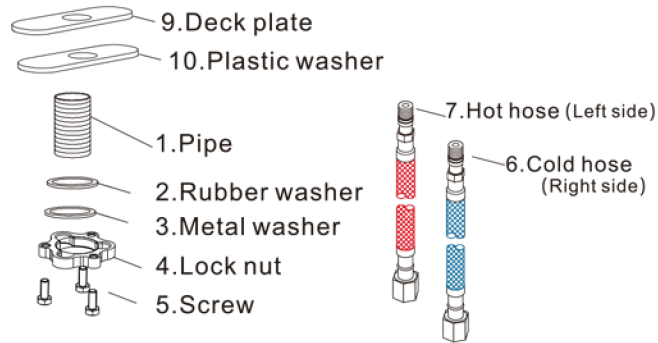
For parts or sale requirements
please contact our customer service department:



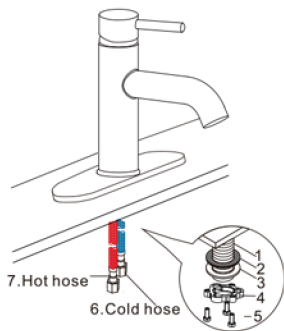
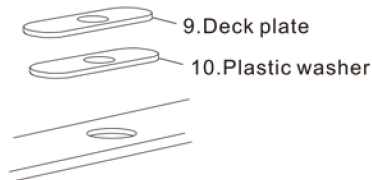
CS@daxib.com



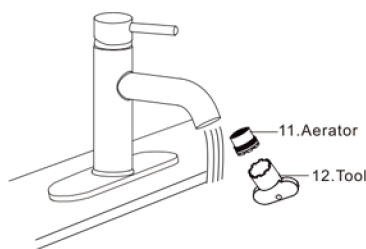
1 888 685 8236



1. Remove the Rubber washer (2), Metal (3) and lock nut (4) from the faucet.
And then put them into the deck plate(9), plastic washer(10) and hole.



2. Screw rubber washer(2), metal washer(3) and lock nut(4) onto the pipe(1).
And then connect water supply(not included) on the hot hose(7) and cold hose(6).



3. Open the hot and cold water supplies.
Check for leaks. Turn on faucet handle for one minute to flush debris from faucet.

If the product you have purchased don't have the tools, it indicates that you do not need the tools for your product.

If water flow is too small or no water, the aerator may be blocked.
If so, you should use the tool(12) to take off the aerator(11), clean it and re-install it.