



DAX-8020094-CR

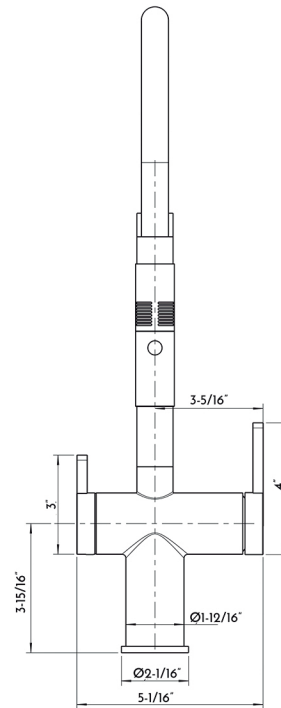
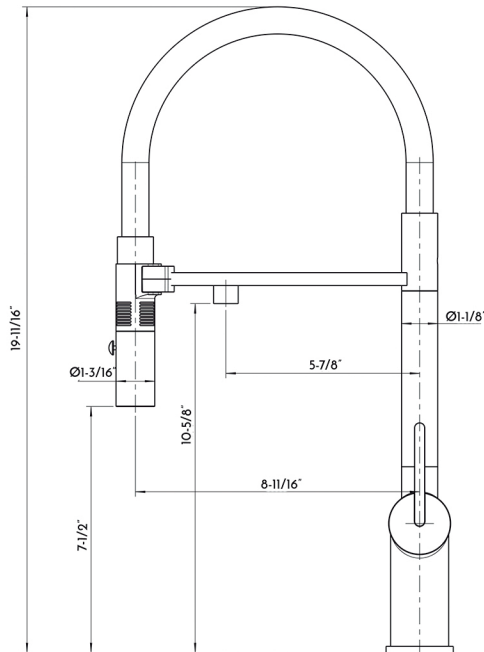


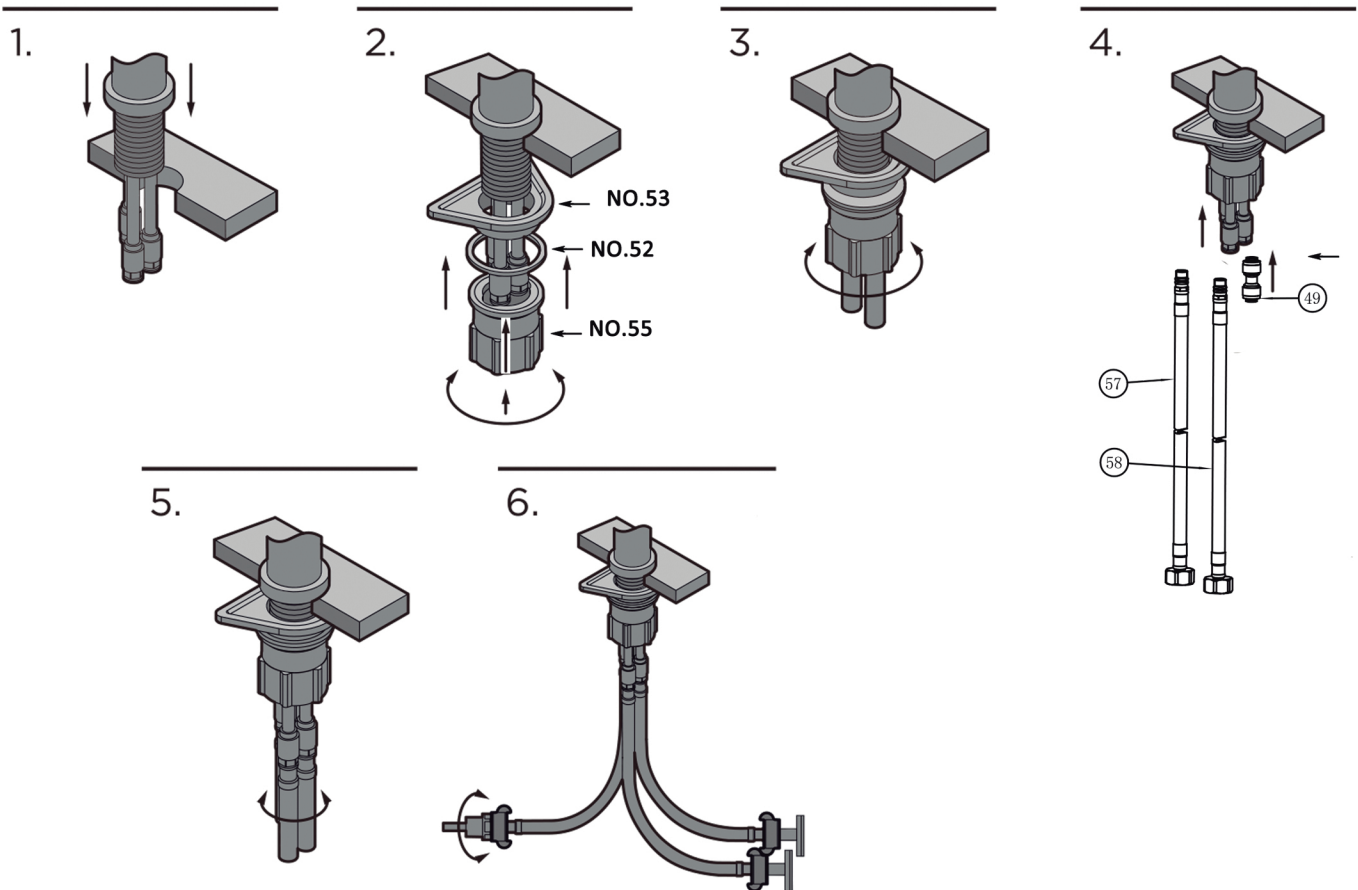
KITCHEN FACUETS SERIES



FEATURES

- Dual Function (Pre rinse/filter)
- Flow Rate: 1.32 GPM
- Brass Body
- Installation Hole 1-3/8"
- Ceramic Cartridge
- Chrome Finish





Installation steps

1.punch a $\Phi 35$ hole and the max thickness of the table shouldn't over 30mm.

2.Insert the fixation set into the hole

3.Tighten the fixation set (NO.52-56)

****Before connect the hoses and the angle valves ,please open the valve to wash away the blockage in the outlet tube.**

4-6.Connect the inlet hoses to the angle valves.Connect the plastic connector (NO.49) to link the drinking water inlet pipe and the drinking water machine.

For parts or sale requirements
please contact our customer service department:

 CS@daxib.com



1 888 685 8236