



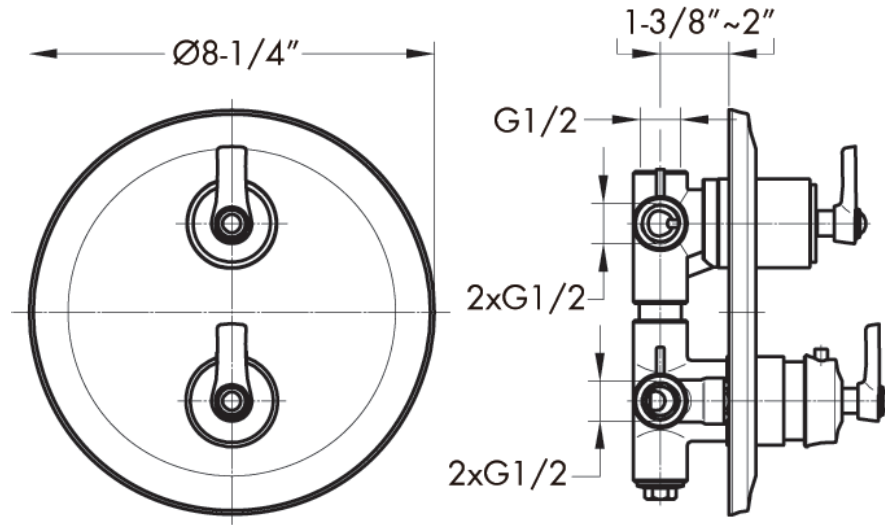
DAX-79909-ORB



SHOWER VALVES SERIES



[www.daxib.com](http://www.daxib.com)



## FEATURES

- Three functions
- Thermostatic
- Ceramic cartridge
- Brass body
- ORB finish





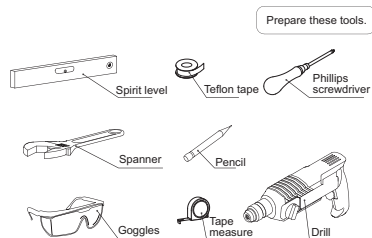
**SHOWER VALVE DAX-79909-ORB**

MODEL	DAX-79909-ORB
ADA	X
UPC APPROVED	YES
ANSI APPROVED	X
ASME APPROVED	YES
BODYSPRAYS INCLUDED	N/A
NUMBER OF BODYSPRAYS	N/A
BODYSPRAYS CONNECTION SIZE	N/A
HAND SHOWER FLOW RATE (GPM)	5.22 GPM
SHOWER HEAD FLOW RATE (GPM)	5.22 GPM
ROUGH-IN VALVE FLOW RATE (GPM)	5.22 GPM
INLETS QUANTITY	2
INLETS SIZE	1/2"
OUTLETS QUANTITY	3
OUTLETS SIZE	1/2"
HANDLE MATERIAL	BRASS
HANDLE STYLE	DOUBLE
GOCLICK BUTTONS	N/A
HAND SHOWER INCLUDED	NO
HAND SHOWER HOSE INCLUDED	NO
HAND SHOWER HOSE LENGTH	NO
INSTALLATION TYPE	WALL MOUNTED
MATERIAL	BRASS
PRESSURE BALANCE	NO
SCALD GUARD	YES
SHOWER ARM REACH	N/A
SHOWER ARM CONNECTION SIZE	N/A
SHOWER HEAD	N/A
SHOWER HEAD HEIGHT	N/A
SHOWER HEAD SHAPE	N/A
SHOWER HEAD WIDTH	N/A
SLIDE BAR INCLUDED	NO
SLIDE BAR DIMENSION	NO
THERMOSTATIC	YES
VALVE TYPE	THERMOSTATIC
FINISH	OIL RUBBED BRONZE
SHAPE	ROUND

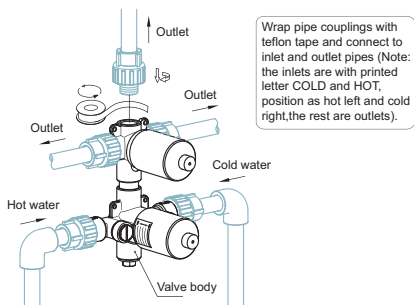




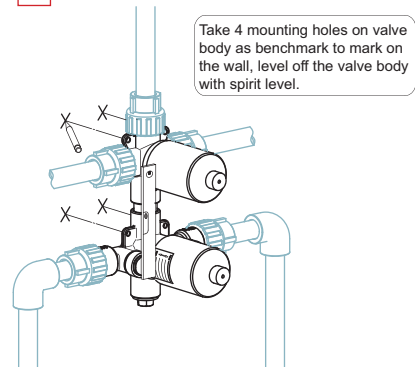
01



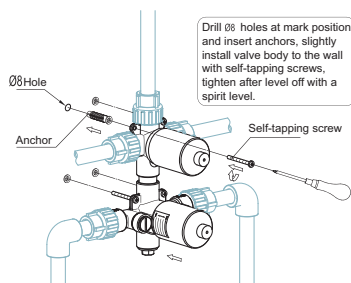
02



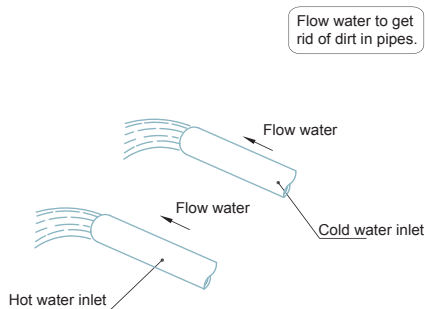
03



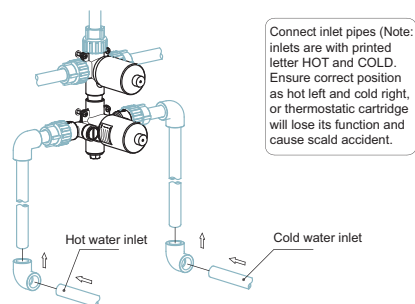
04



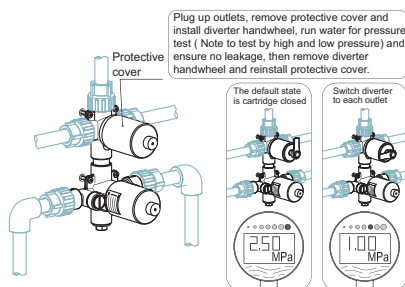
05



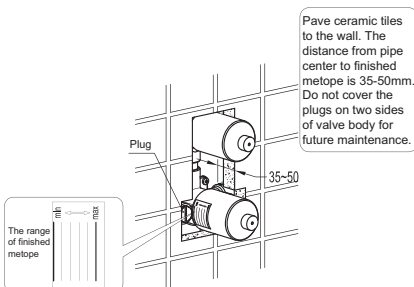
06



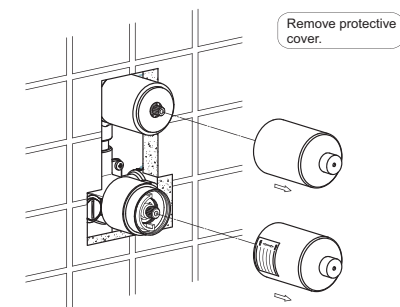
07



08

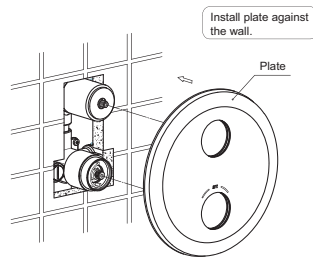


09

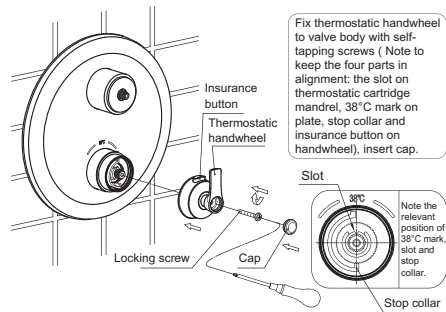




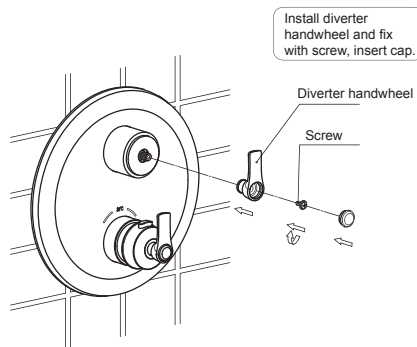
10



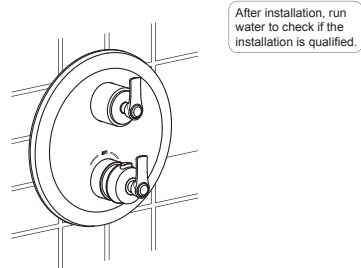
11



12



13



For parts or sale requirements please contact our customer service department:

 [CS@daxib.com](mailto:CS@daxib.com)

 1 888 685 8236

