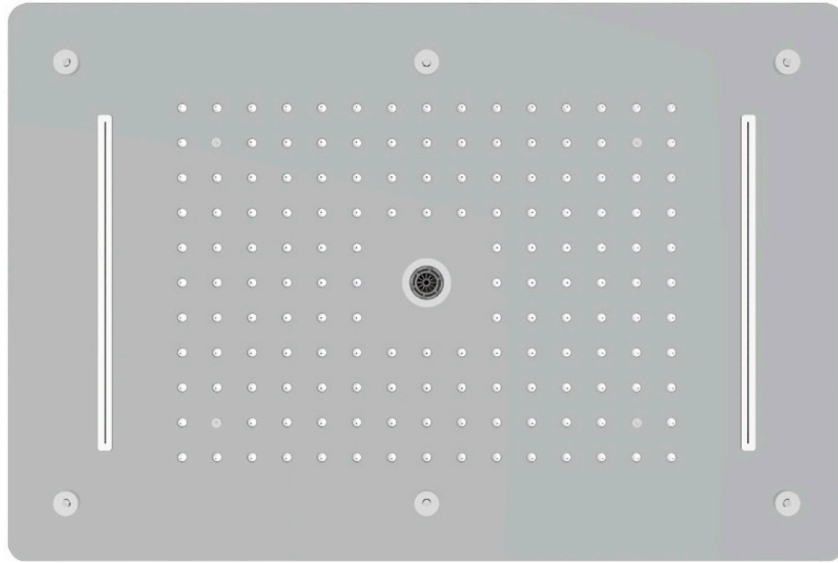


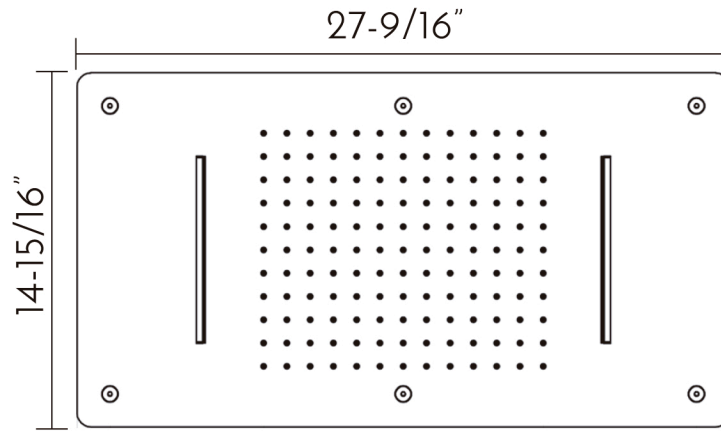


DAX-5049-CR



SHOWER HEADS **SERIES**





FEATURES

- Shower Head
- Rectangle Ceiling Mount
- 3 Functions
- Stainless Steel
- Chrome Finish





SHOWER HEAD DAX-5049-CR

MODEL	DAX-5049-CR
ADA	No
UPC APPROVED	Yes
ANSI APPROVED	No
ASME APPROVED	No
BODYSPRAYS INCLUDED	No
SHOWER HEAD FLOW RATE (GPM)	2.5
HAND SHOWER INCLUDED	No
HAND SHOWER HOSE INCLUDED	No
HAND SHOWER HOSE LENGTH	No
INSTALLATION TYPE	Wall Mounted
MATERIAL	Stainless Steel 304
SCALD GUARD	Yes
SHOWER ARM REACH	No
SHOWER ARM CONNECTION SIZE	NPT 1/2"
SHOWER HEAD	Yes
SHOWER HEAD HEIGHT	86-5/8"
SHOWER HEAD SHAPE	Square
SHOWER HEAD WIDTH	23-5/8" x 15-3/4"
SLIDE BAR INCLUDED	No
SPRAY PATTERN	Rain & Water fall
THERMOSTATIC	No
VALVE INCLUDED	No
WATER EFFICIENT	No
WATERSENSE CERTIFIED	No
WALL ELBOW DIMENSION	NPT 1/2"
FINISH	Chrome

For parts or sale requirements please contact our customer service department:

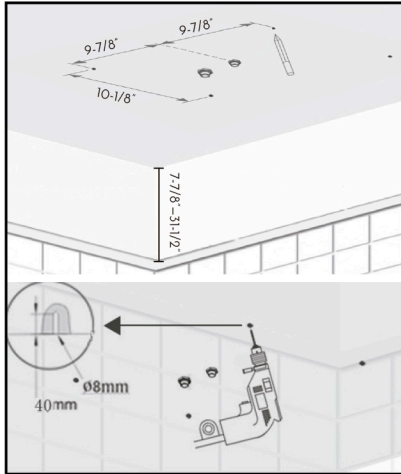
 CS@daxib.com

 1 888 685 8236

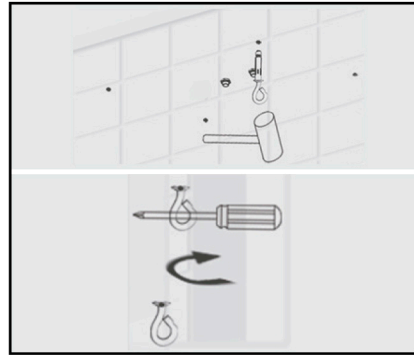




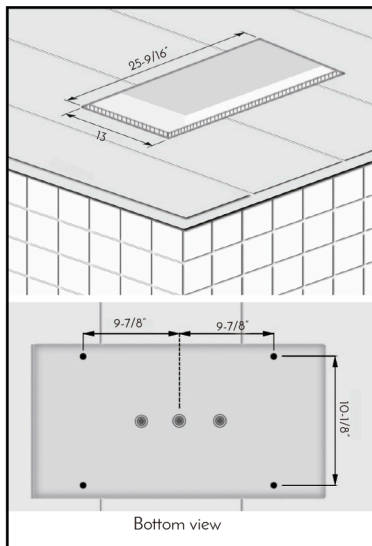
01



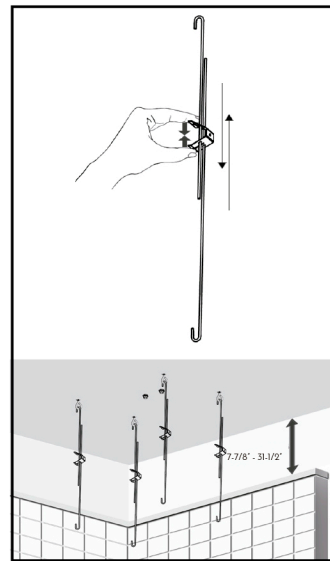
02



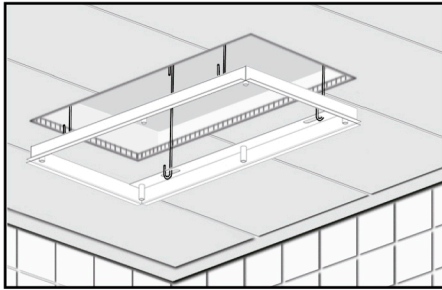
03



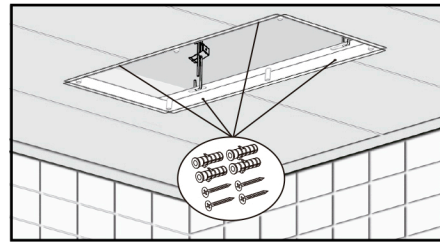
04



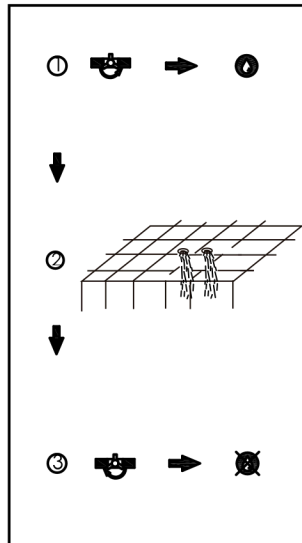
05



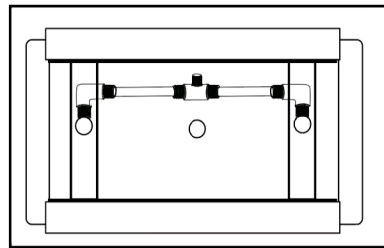
06



07

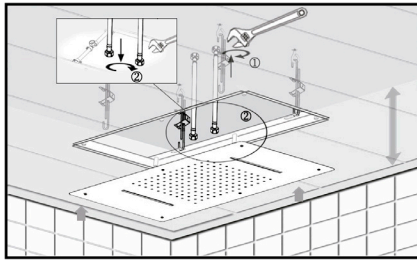


08

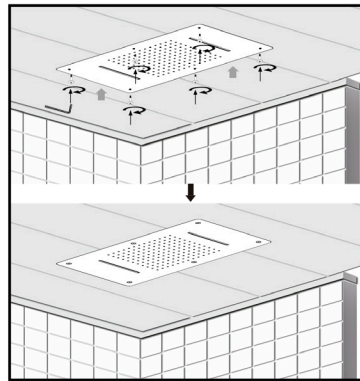




09



10





ITEM NO.: **DAX-5049 / DAX-5002**

DESCRIPTION:

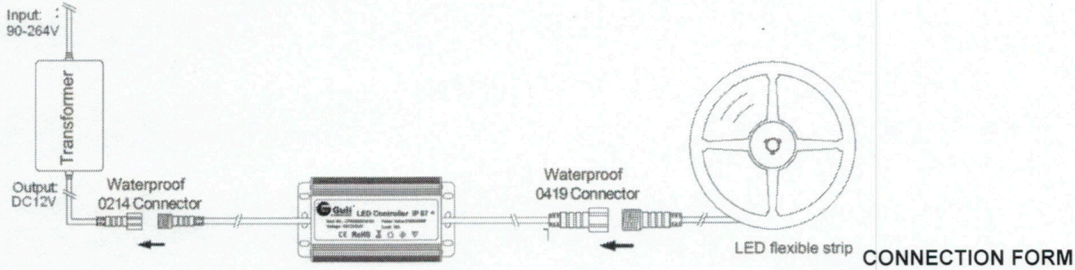
Working voltage: DC12V/24V

Control current: 18A

Total power: 216 W

Receiving range: 20M

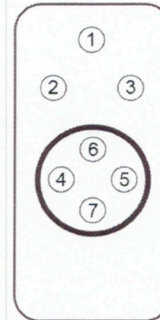
Connecting method: common anode



CONTROLLING FORM:

1. Functions of Keys:

- Key 1: on/off
- Key 2: single colors mode(7modes)
- Key 3: color changing mode(7modes))/ blue tooth music mode
- Key 4: color modes choice/ music choice
- Key 5: color modes choice/ music choice
- Key 6: turn up(brightness/ speed/ music volume)
- Key 7: turn down(brightness/ speed/ music volume)



2. How to use

- a. Press Key 1 to turn on/off in any state.
- b. Press Key 2 to activate light single color changing mode..
- c. Press Key 3 once to activate color changing models, changing moles by pressing Key 4/Key 5, changing speed by pressing Key 6/ Key 7.
- d. Press Key 3 twice to activate blue tooth music modes, changing music by pressing Key 4/Key 5 and changing music volume by pressing Key 6/ Key 7.
- e. Matching Code
 Press Key 2 once within 3 seconds when power on, the light will blink 3 times if matching is successful.
 Press Key 2 again within 3 seconds when power on again, the light will blink 3 times if matching is released.

No.	Single color modes	Color changing modes
1	red	seven colors gradual change
2	green	white colors gradual change
3	blue	red, green and blue gradual change
4	white	seven colors jump to change
5	yellow	red, green and blue jump to change
6	cyan	red colors gradual change + jump to change
7	purple	green colors gradual change + jump to change
8		blue colors gradual change + jump to change

ATTENTION:

- 1. The controller's working voltage is DC12V and it couldn't work with AC voltage..
- 2. The rompte controller's working voltage is 12V(batteries of12V 23A). It will be better if you Pull out antenna to control the lights.