



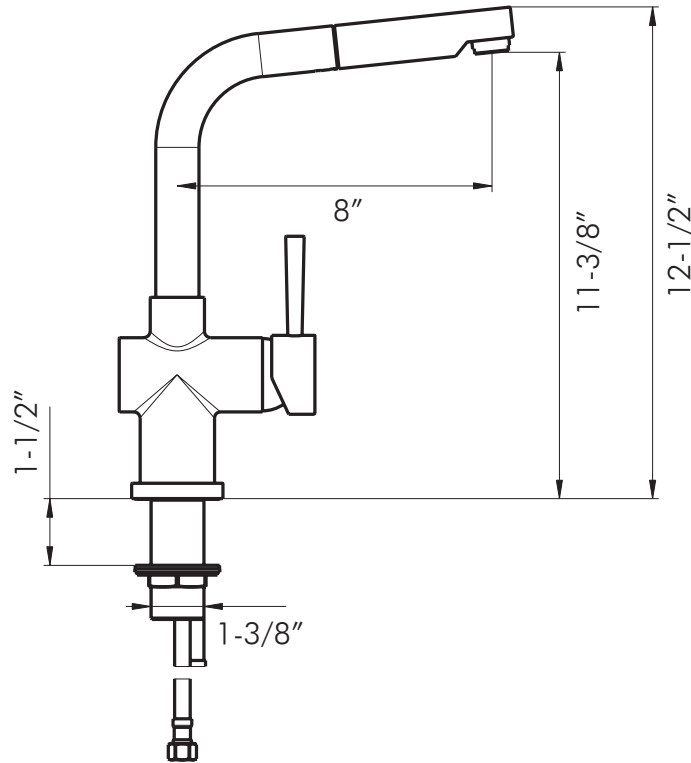
DAX-413



KITCHEN FAUCETS **SERIES**



www.daxib.com



FEATURES

- Pull out shower head
- Brushed stainless steel finish
- Brass body casting
- Single sprayer
- Brass shower head
- Ceramic cartridge
- Flow rate 1.8 GPM
- Height 12-1/2"
- Installation hole 1-3/8"
- Water lines and mounting parts included





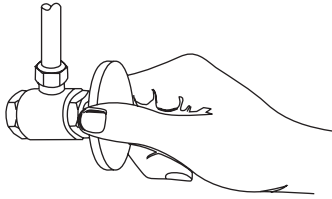
KITCHEN FAUCET **DAX-413**

MODEL	DAX-413
ADA	YES
UPC APPROVED	COMPLY
ANSI APPROVED	COMPLY
ASME APPROVED	COMPLY
WATERSENSE CERTIFIED	NA
NSF APPROVED	YES
CONNECTION SIZE	9/16"
FAUCET HOLE SIZE	1-3/8"
FAUCETS HOLE	1
FAUCET TYPE	Pull out Kitchen Faucet
FLOW RATE (GPM)	1.8
HANDLE STYLE	Single handle
NUMBER OF HANDLES	1
HOSE LENGTH	19-11/16"
MATERIAL	Brass
FINISH	Brushed stainless steel
PULL OUT SPRAY	ONE FUNCTION
SIDESPRAY	NA
SPOUT REACH	8"
SPOUT SWIVEL	YES
CARTRIDGE TYPE	Ceramic
MAX DECK THICKNESS	NA
INCLUDED COMPONENTS	Water lines and mounting parts



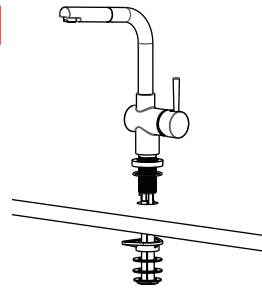


01



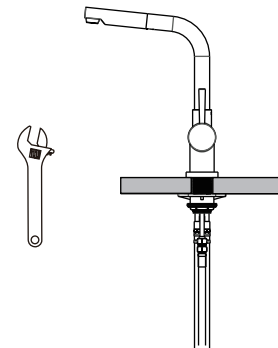
You should clean all the dirt from valve outlets. Turning off the water supply valves. This is usually found near the water meter. If you are replacing an existing faucet, remove the faucet from the sink and clean the sink surface thoroughly.

02



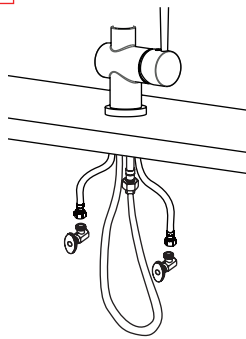
Install without Deck Plate. Make sure the O-RING is placed onto the bottom of Base Ring. Install faucet through hole in sink. From underside sink, put Plastic Washer and Mounting Nut. Position faucet on sink properly and tighten Mounting Nut.

03



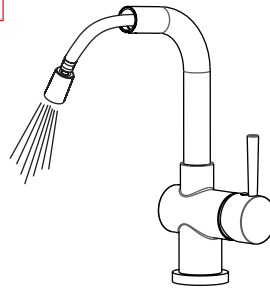
If necessary, tighten screws using an adjustable wrench until the faucet is firmly connected to the sink.

04



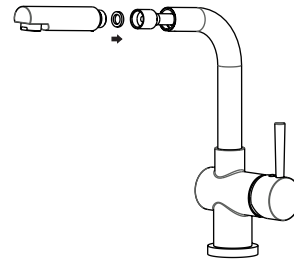
Connect hot and cold water supply lines to the Water Supply Valves.

05



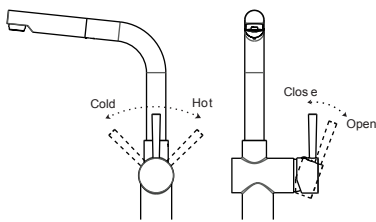
After installation is complete, remove Spray head and rotate handle to the close position. Turn Water Supply Valves on, and check all connections for leak. Flush faucet by running hot and cold water in full position for one minute.

06



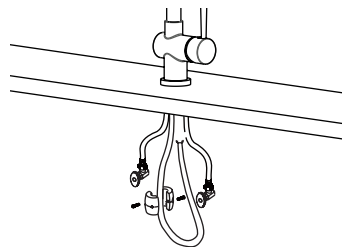
Replace Spray head.

07



Lift the handle up, the cartridge will be activated allowing water to flow. The water flow will increase by continuing to rotate handle. By rotating the handle to the right, the water temperature will decrease to cold flow only. By rotating Handle to the left, the water temperature will increase to hot only.

08



Attach Weights to the pull-out hose using screws at the proper point of the hose. Be noted Weights are optional.





DIAGRAM NUMBER	DAX SKU	TITLE DESCRIPTION
1	RP110101	Aerator House
2	RP110102	Aerator
3	RP110103	Washer
4	RP110104	Spray Head
5	RP110105	Washer
6	RP110106	Joint
7	RP110107	Plastic Nipple
8	RP110108	Spout Pipe
9	RP110109	O-Ring
10	RP110110	Joint
11	RP110111	Coil Spring
12	RP110112	Body
13	RP110113	Base
14	RP110114	O-Ring
15	RP110115	Triangle Plank
16	RP110116	Screwed Connector
17	RP110117	Washer
18	RP110118	Washer
19	RP110119	Lock Nut
20	RP110120	Pilot Sleeve
21	RP110121	Hose Weight
22	RP110122	Flexible Hose
23	RP110123	Flexible Hose
24	RP110124	Washer
25	RP110125	Joint
26	RP110126	Check Valve
27	RP110127	Flexible Hose
28	RP110128	Press Hat
29	RP110129	Cap
30	RP110130	Handle Cover

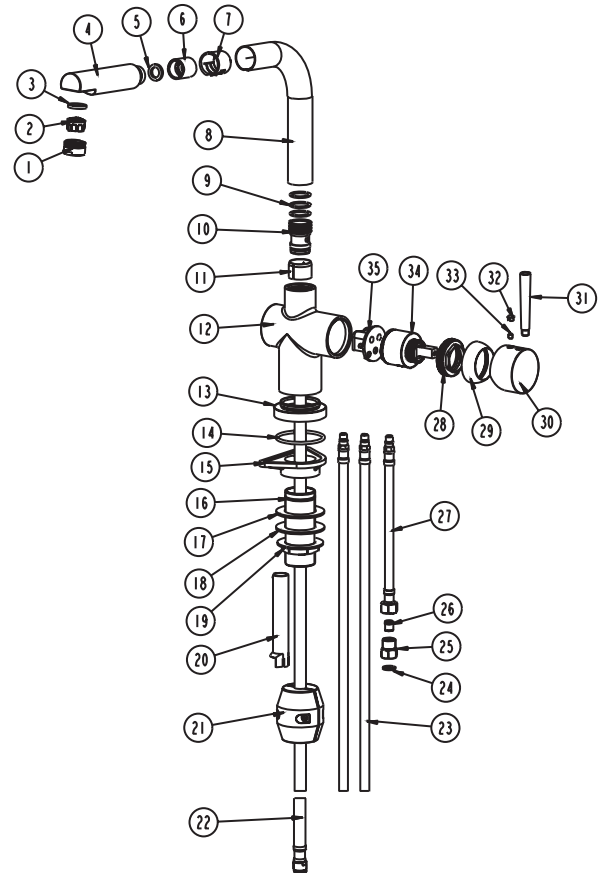
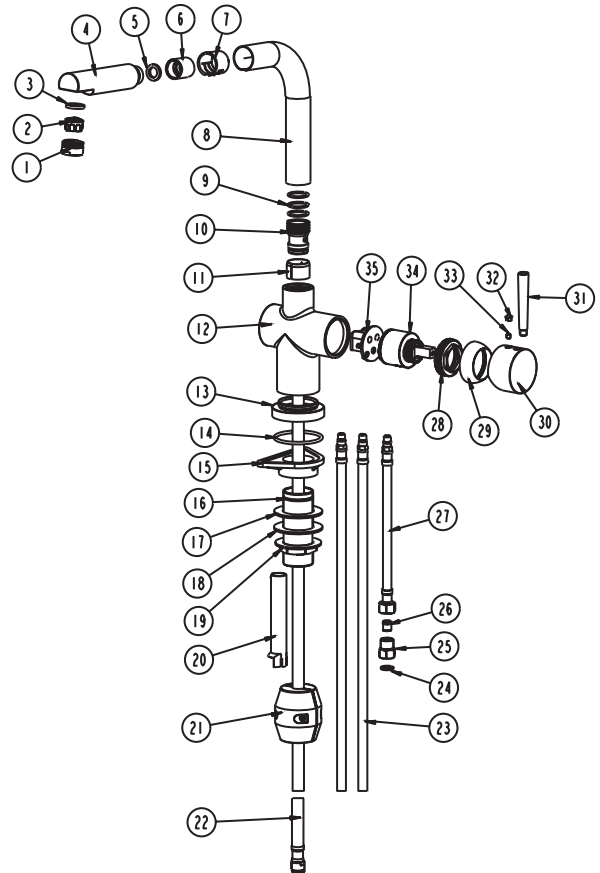




DIAGRAM NUMBER	DAX SKU	TITLE DESCRIPTION
31	RP110131	Handle Shaft
32	RP110132	Canopy
33	RP110133	Screw
34	RP110134	Cartridge
35	RP110135	Base



For parts or sale requirements please contact our customer service department:

 CS@daxib.com

 1 888 685 8236

