

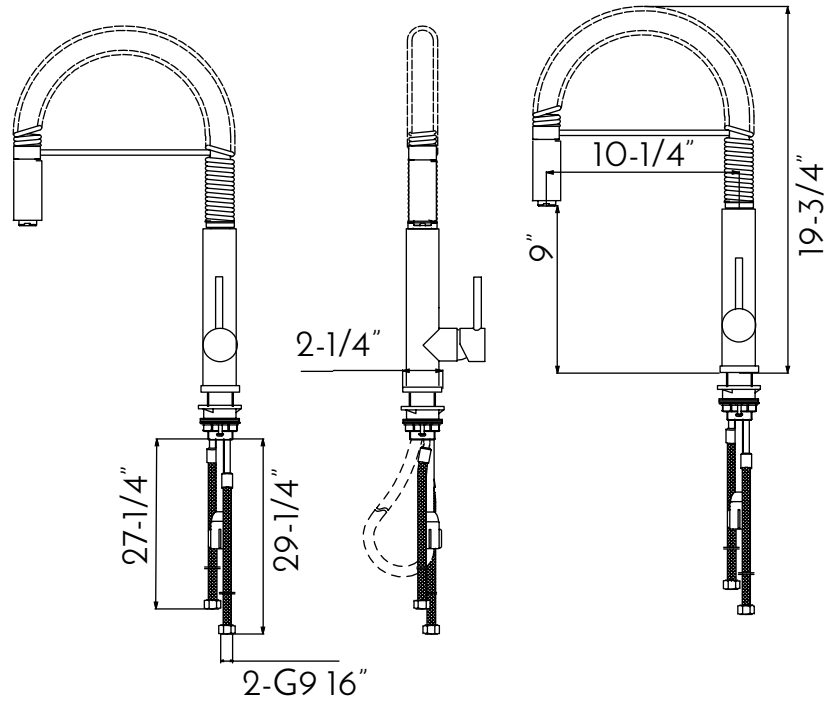


DAX-2141



KITCHEN FAUCETS SERIES





FEATURES

- Pull down shower head
- Brushed stainless steel finish
- 304 stainless steel body casting
- Single sprayer
- Stainless steel shower head
- Ceramic cartridge
- Flow rate 2.2 GPM
- Height 19-3/4"
- Installation hole 1-3/8"
- Water lines and mounting parts included





KITCHEN FAUCET **DAX-2141**

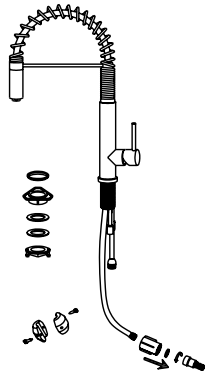
MODEL	DAX-2141
ADA	NA
UPC APPROVED	NA
ANSI APPROVED	NA
ASME APPROVED	NA
WATERSENSE CERTIFIED	NA
NSF APPROVED	NA
CONNECTION SIZE	G9/16
FAUCET HOLE SIZE	NA
FAUCETS HOLE	NA
FAUCET TYPE	Nozzle
FLOW RATE (GPM)	≤2.2GPM
HANDLE STYLE	Side lever
NUMBER OF HANDLES	1
WATER LINES LENGTH	23-5/8"
INSTALLATION TYPE	Deck mount
MATERIAL	SUS304
FINISH	Satin
PULL OUT SPRAY	Nozzle
PRE-RINSE	NA
SIDESPRAY	NA
SPOUT REACH	10-1/4"
SPOUT SWIVEL	360°
SPOUT TYPE	High throw
CARTRIDGE TYPE	Kerox 35A
MAX DECK THICKNESS	2"
INCLUDED COMPONENTS	Mounting parts water lines



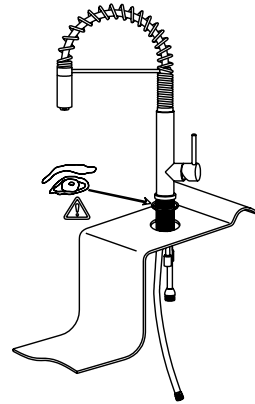
01



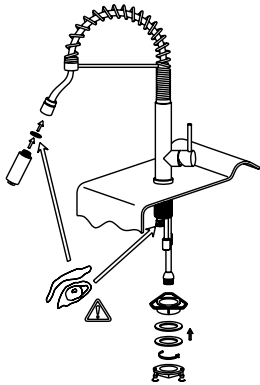
02



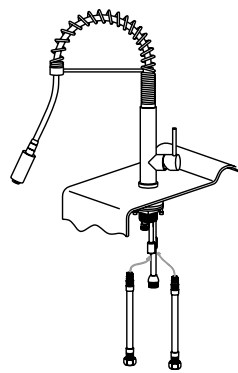
03



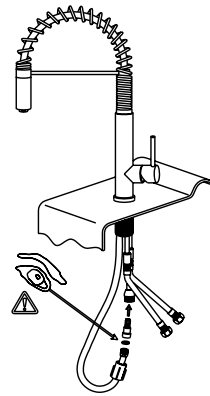
04



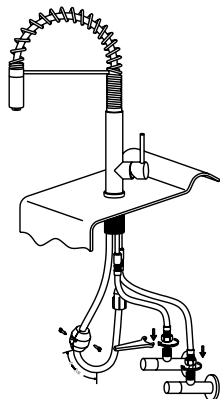
05



06



07



i

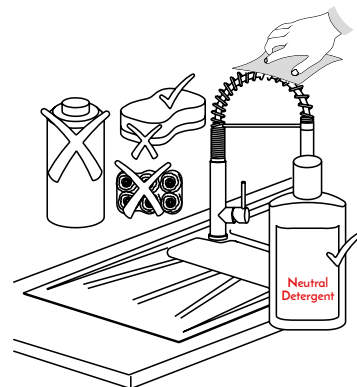
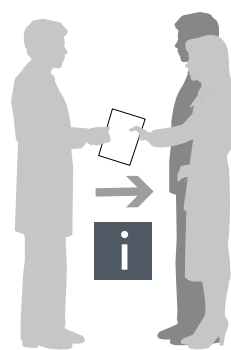
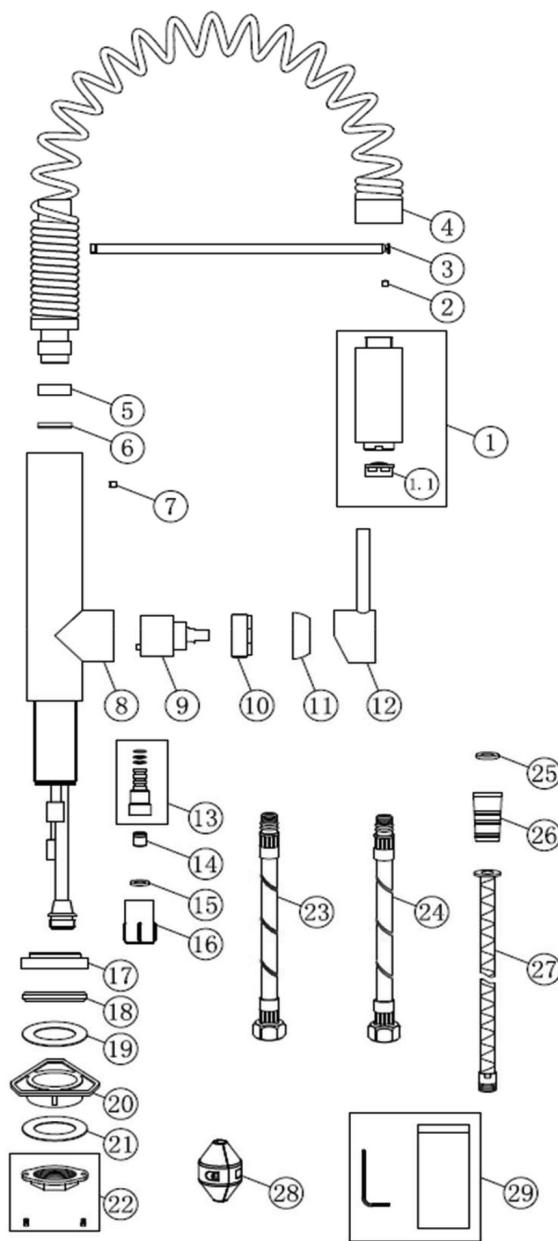




DIAGRAM NUMBER	DAX SKU	TITLE DESCRIPTION
1	190008800	Shower head for DAX-2141
1.1	190004165	Neoperl Aerator
2	190006918	Screw
3	190002092	Tube
4	190009223	Spring assembly
5	190002090	Plastic ring
6	190002091	Plastic ring
7	190004864	Screw
8	190002948	Body assembly
9	190004166	Cartridge
10	190004083	Press cover
11	190013018	Cover
12	190011401	Handle assembly
13	190010565	Connector assembly
14	190013118	Check valve
15	190004088	Rubber ring
16	190001503	Quick clamping sleeve
17	190013257	Base
18	190006241	Rubber ring
19	190004111	Rubber ring
20	190002413	Plastic Fixed Set
21	190000798	Plate
22	190010566	Screw nut assembly
23	190005546	Hose 61.3CM
24	190006629	Hose 61.3CM
25	190004085	Rubber ring
26	190004091	Hose assembly
27	190005530	Hose
28	190012832	Weight
29	190011424	Allen Wrench



For parts or sale requirements please contact our customer service department:

CS@daxib.com

1 888 685 8236