



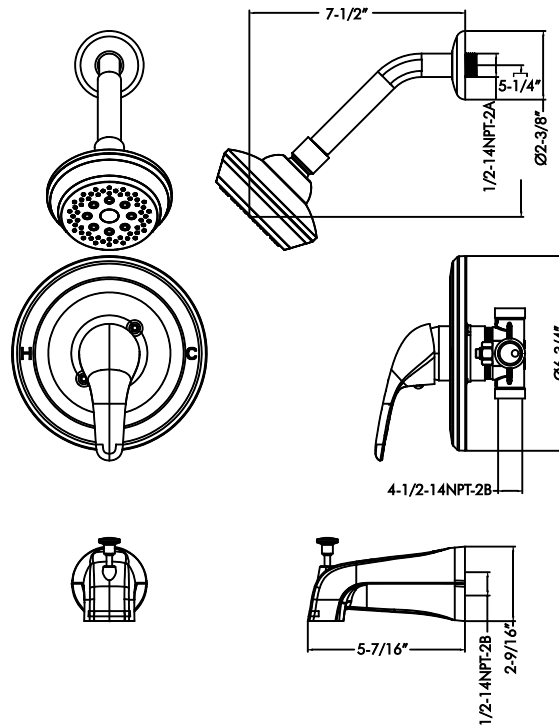
DAX-0511-CR



SHOWER SYSTEMS **SERIES**



www.daxib.com



FEATURES

- Two function valve
- Wall mount shower head
- Multi-function shower head
- Tub filler
- Ceramic cartridge
- Shower head flow rate 2.5 GPM
- Pressure balance valve
- Anti-scalding protection
- Brass body





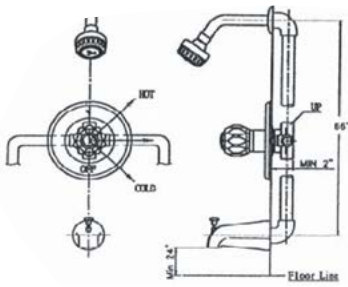
SHOWER SYSTEM DAX-0511-CR

| | |
|--------------------------------|------------------|
| MODEL | DAX-0511-CR |
| ADA | YES |
| UPC APPROVED | YES |
| ANSI APPROVED | YES |
| ASME APPROVED | YES |
| HAND SHOWER FLOW RATE (GPM) | No Handle Shower |
| SHOWER HEAD FLOW RATE (GPM) | 2.5 GPM |
| ROUGH-IN VALVE FLOW RATE (GPM) | No Limited |
| HANDLE MATERIAL | Zinc |
| HANDLE STYLE | Single Lever |
| HAND SHOWER INCLUDED | NO |
| HAND SHOWER HOSE INCLUDED | NO |
| INSTALLATION TYPE | Wall mount |
| PRESSURE BALANCE | YES |
| SCALD GUARD | YES |
| SHOWER ARM REACH | 6" |
| SHOWER HEAD | YES |
| SHOWER HEAD SHAPE | Round |
| SHOWER HEAD WIDTH | Ø2-3/8" |
| SLIDE BAR INCLUDED | NO |
| THERMOSTATIC | NO |
| VALVE INCLUDED | YES |
| VALVE TYPE | Pressure Balance |
| WATER EFFICIENT | YES |
| WATERSENSE CERTIFIED | YES |
| WALL ELBOW DIMENSION | 2-3/8" |
| FINISH | Chrome |

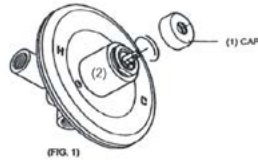




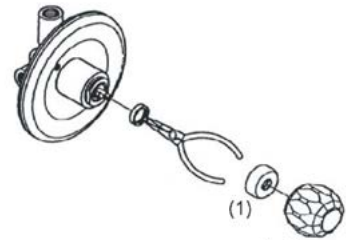
01



02

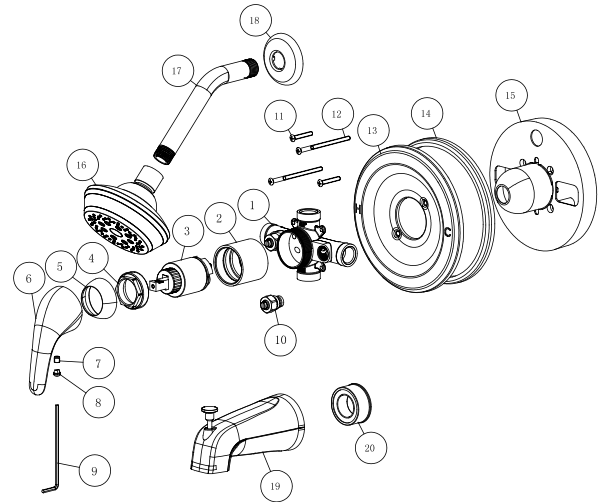


03






| DIAGRAM NUMBER | DAX SKU | TITLE DESCRIPTION |
|----------------|---------|-----------------------|
| 1 | | Value Body |
| 2 | | Sleeve |
| 3 | | Cartridge |
| 4 | | Fixting Nut |
| 5 | | Dome Nut |
| 6 | | Handle |
| 7 | | Hot&Cold Index Button |
| 8 | | Set Screw |
| 9 | | Allen Wrench |
| 10 | | Integral Stop |
| 11 | | Screw |
| 12 | | Screw |
| 13 | | Cover Plate |
| 14 | | Escutcheon Gasket |
| 15 | | Protect Head |
| 16 | | Shower Head |
| 17 | | Shower Arm |
| 18 | | Shower Flange |
| 19 | | Spout |
| 20 | | Teflon Tap |



For parts or sale requirements please contact our customer service department:

 CS@daxib.com

 1 888 685 8236

