



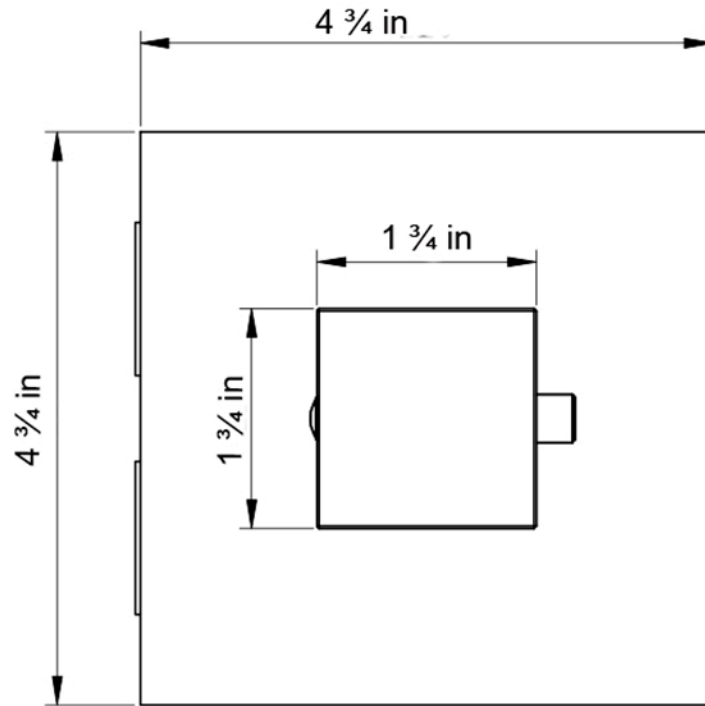
DAX-050-HPO3-CR



SHOWER HANDLE **SERIES**



[www.daxib.com](http://www.daxib.com)



## FEATURES

---

- Square plate
- Handle kit
- For model DAX-1050
- Chrome Finish







SHOWER HANDLE **DAX-050-HP03-CR**

MODEL	DAX-050-HP03-CR
UPC APPROVED	Yes
ANSI APPROVED	No
ASME APPROVED	No
BODYSPRAYS INCLUDED	No
HANDLE MATERIAL	Zinc Alloy
HAND SHOWER INCLUDED	No
HAND SHOWER HOSE INCLUDED	No
HAND SHOWER HOSE LENGTH	No
INSTALLATION TYPE	Wall Mounted
MATERIAL	Brass & Stainless Steel 304
SCALD GUARD	No
SHOWER ARM REACH	No
SHOWER HEAD	No
FINISH	Chrome

For parts or sale requirements please contact our customer service department:

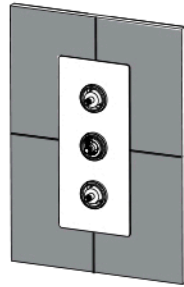
 [CS@daxib.com](mailto:CS@daxib.com)

 1 888 685 8236



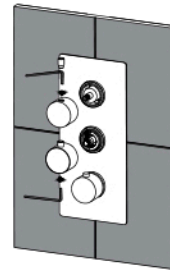


01



Take away the plastic protection cups on the valve and insert the stainless steel plate. Consider the correct direction of plate.

02



Install the handles with supplied key. Test and make sure all the functions are closed when handle is pointed at OFF position. The installation is completed.

