



BSN-285K

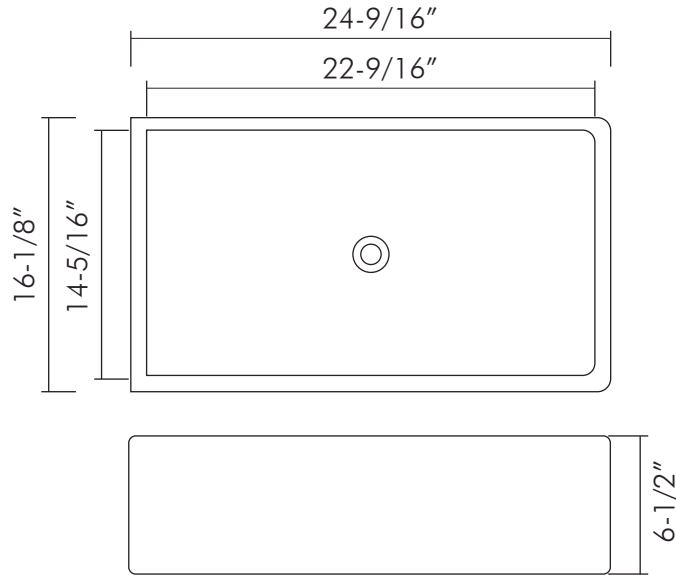


CERAMIC VESSEL SINKS SERIES





BSN-285K



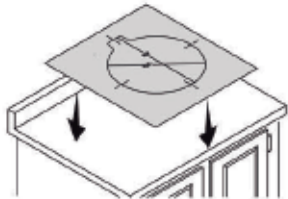
## FEATURES

- Ceramic material
- White gloss finish
- Pop up drain not included (available)
- Vessel installation
- Size W 24-9/16" x H 16-1/8" x D 6-1/2"



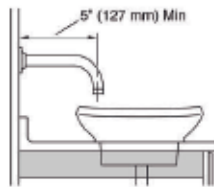


01



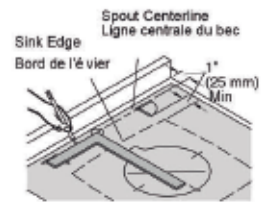
Position the template on the countertop.

02



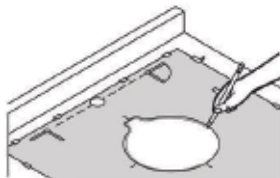
Wall-Mount Faucets:  
The spout must be at least 5" in length.

03



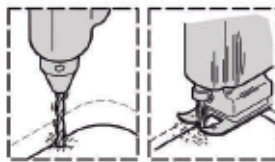
Countertop Faucets: Use the spout centerline on the template to ensure faucet clearance.

04



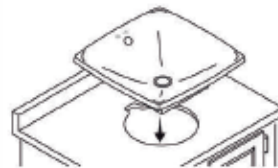
Trace the template hole outline on the countertop.

05



Drill a pilot hole and cut the countertop opening along the traced line.

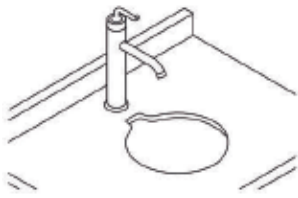
06



Position the sink with the logo to the back. Adjust the opening to fit. Remove the sink.

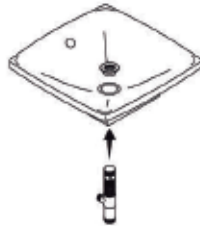


07



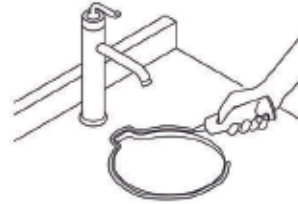
Countertop Faucets: Drill the faucet holes, and install the faucet according to the manufacturer's instructions.

08



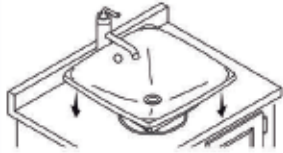
Install the drain according to the instructions.

09



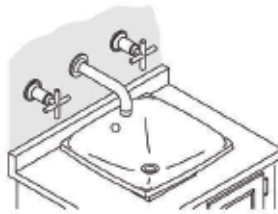
Apply a thin, continuous bead of sealant around the sink opening.

10



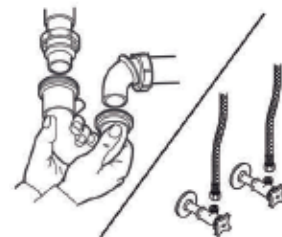
Position the sink with the logo to the back. Wipe away excess sealant. Allow the sealant to cure.

11



Wall-Mount Faucets: Install the faucet trim by following the instructions.

12



Complete the water supply and drain connections.



Required tools for installation (not included)  
Outils requis pour l'installation (non inclus)

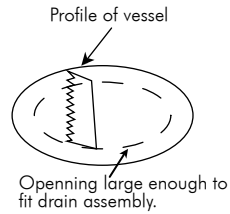
Silicone-acrylic sealant  
Scellant à la silicone-acrylique

Rings  
Chiffons

Jigsaw or Keyhole Saw  
Saw à sautoise ou scie à gâchet



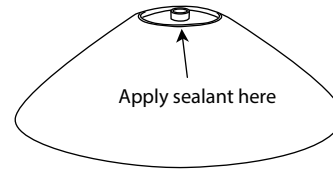
01



Place the vessel sink face up onto the countertop where you would like it to be installed. Trace the profile of the vessel sink onto the countertop.

Offset this line at least 1" inside the profile of the sink or large enough to clear the drain assembly and piping, but not exceed the profile.  
Use a drill and jigsaw to cut out the opening.

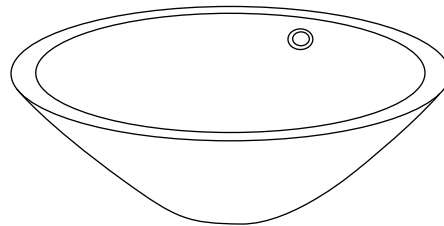
02



Apply sealant to the bottom lip of the vessel sink. Turn it back over and lower the vessel into place. Press down firmly to spread the sealant and wipe away any excess sealant immediately with a damp cloth.

\*Allow the sealant to set overnight BEFORE connecting water and drain assembly.

03



Install faucet and drain assembly according to their enclosed instructions. Take care not to overtighten the drain assembly to sink as it would break or cause cracking.

For parts or sale requirements please contact our customer service department:

 [CS@daxib.com](mailto:CS@daxib.com)

 1 888 685 8236