



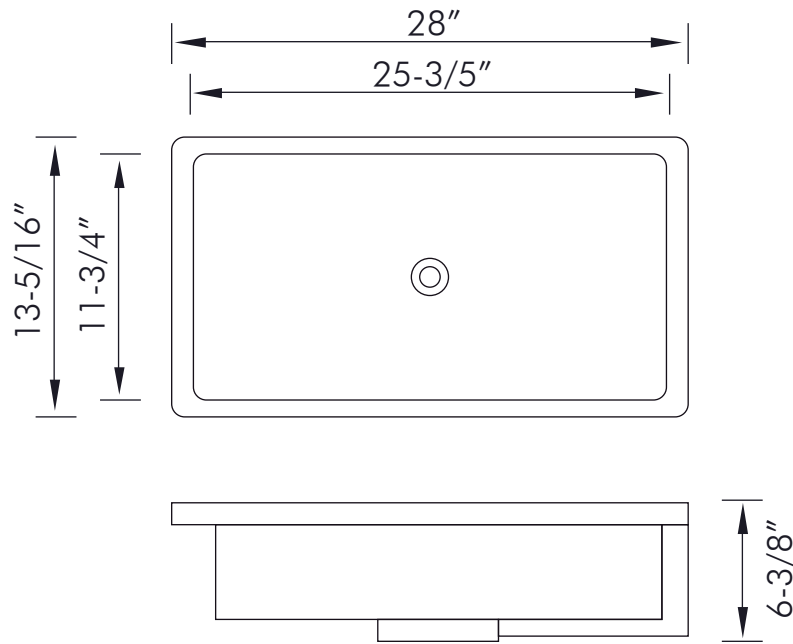
BSN-2814



CERAMIC UNDERMOUNT SINKS **SERIES**



BSN-2814



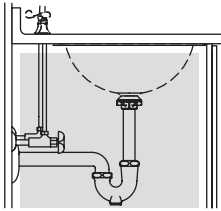
## FEATURES

- Ceramic material
- White gloss finish
- Overflow
- Pop up drain not included (available)
- Undermount installation
- Size W 28" x H 13-5/16" x D 6-3/8"





01



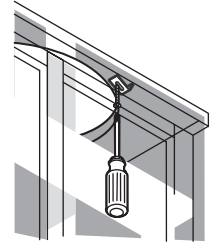
Verify fit or relocate plumbing.  
If possible, pre-install the drain  
to the lavatory.

02



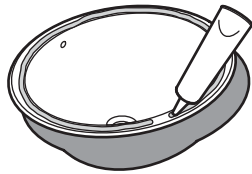
Clean the underside of the  
countertop and the rim of  
the lavatory.

03



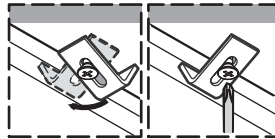
Loosely install the clips.

04



Generously apply 100% silicone  
sealant. Do not use adhesives  
or adhesive sealants.

05



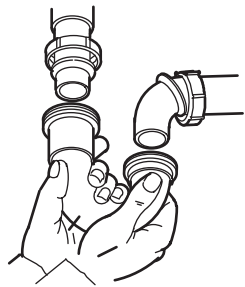
While lifting the lavatory,  
rotate and tighten clips evenly.  
Use anchors and fasteners  
provided with countertop.

06



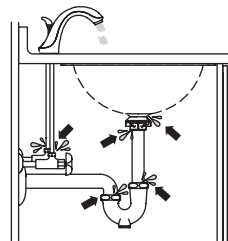
Wipe away excess sealant.  
Essuyer l'excès de mastic.  
Limpie el exceso de sellador.

07



Complete faucet installation.  
Connect drain.

08



Run water into the lavatory  
and check for leaks.