

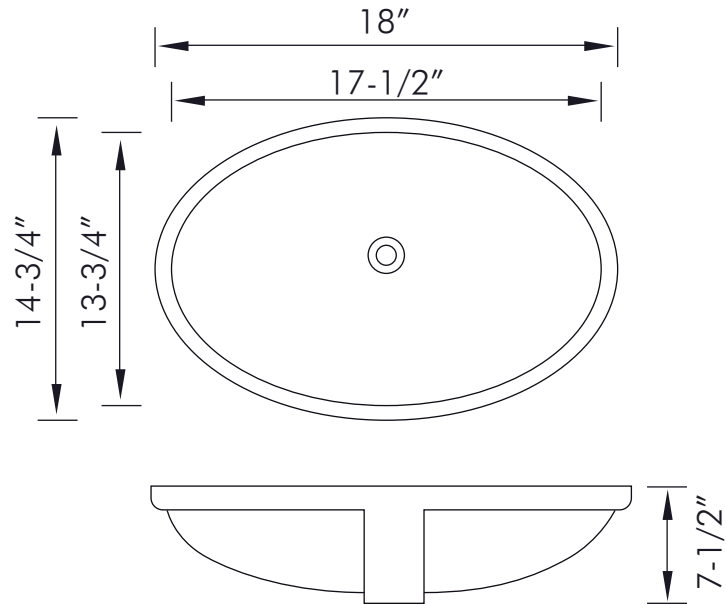


BSN-205B-1



CERAMIC UNDERMOUNT SINKS SERIES





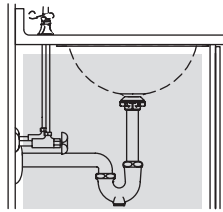
## FEATURES

- Ceramic material
- Ivory gloss finish
- Overflow
- Overflow chrome ring included
- Pop up drain not included (available)
- Undermount installation
- Size W 18" x H 14-3/4" x D 7-1/2"



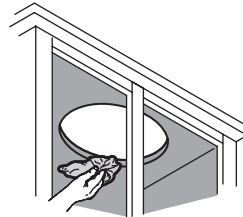


01



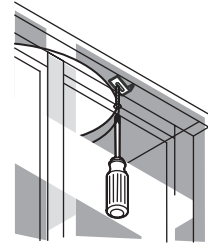
Verify fit or relocate plumbing. If possible, pre-install the drain to the lavatory.

02



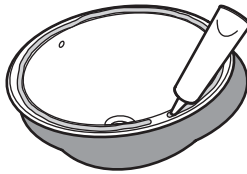
Clean the underside of the countertop and the rim of the lavatory.

03



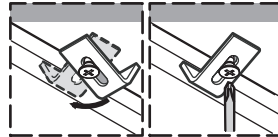
Loosely install the clips.

04



Generously apply 100% silicone sealant. Do not use adhesives or adhesive sealants.

05



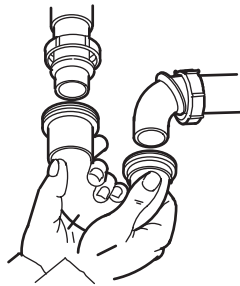
While lifting the lavatory, rotate and tighten clips evenly. Use anchors and fasteners provided with countertop.

06



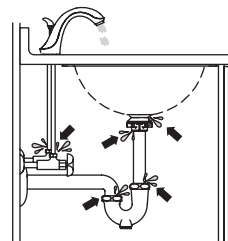
Wipe away excess sealant. Essuyer l'excès de mastic. Limpie el exceso de sellador.

07



Complete faucet installation. Connect drain.

08



Run water into the lavatory and check for leaks.

For parts or sale requirements please contact our customer service department:



CS@daxib.com



1 888 685 8236