



SDHQ Motorsports
190 S McQueen Rd
Ste 109 Gilbert, AZ 85233
Phone: 480-633-2929

Product Packing List

Product: SDHQ-55-1202-G3

Description: 2016+ Tacoma Behind the Grille Light Mount

_____ (1) Driver Side Bracket	SDHQ-55-1202-G3-A
_____ (1) Passenger Side Bracket	SDHQ-55-1202-G3-B
_____ (1) Hardware Package	SDHQ-55-1202-G3-C
_____ (2) 1/4" - 20 x 3/4" S.S. Hex Head Bolts	
_____ (2) 1/4" - 20 S.S. Lock Nuts	
_____ (2) 1/4" S.S. SAE Flat Washers	
_____ (2) 1/4" x 1 1/4" S.S. Flat Fender Washers	

Inspected and Packaged By: _____ Date: _____

For questions or help with the installation, please call SDHQ Offroad @ 480-633-2929
Mon.-Fri. 8:00am-5:30pm and Sat. 8:00am-3:30pm Arizona Time. www.sdhqoffroad.com



SDHQ Motorsports
 190 S McQueen Rd
 Ste 109 Gilbert, AZ 85233
 Phone: 480-633-2929

INSTALLATION INSTRUCTIONS

Product: *SDHQ-55-1202-G3*

Description: 2016+ Tacoma Behind the Grille Light Mount



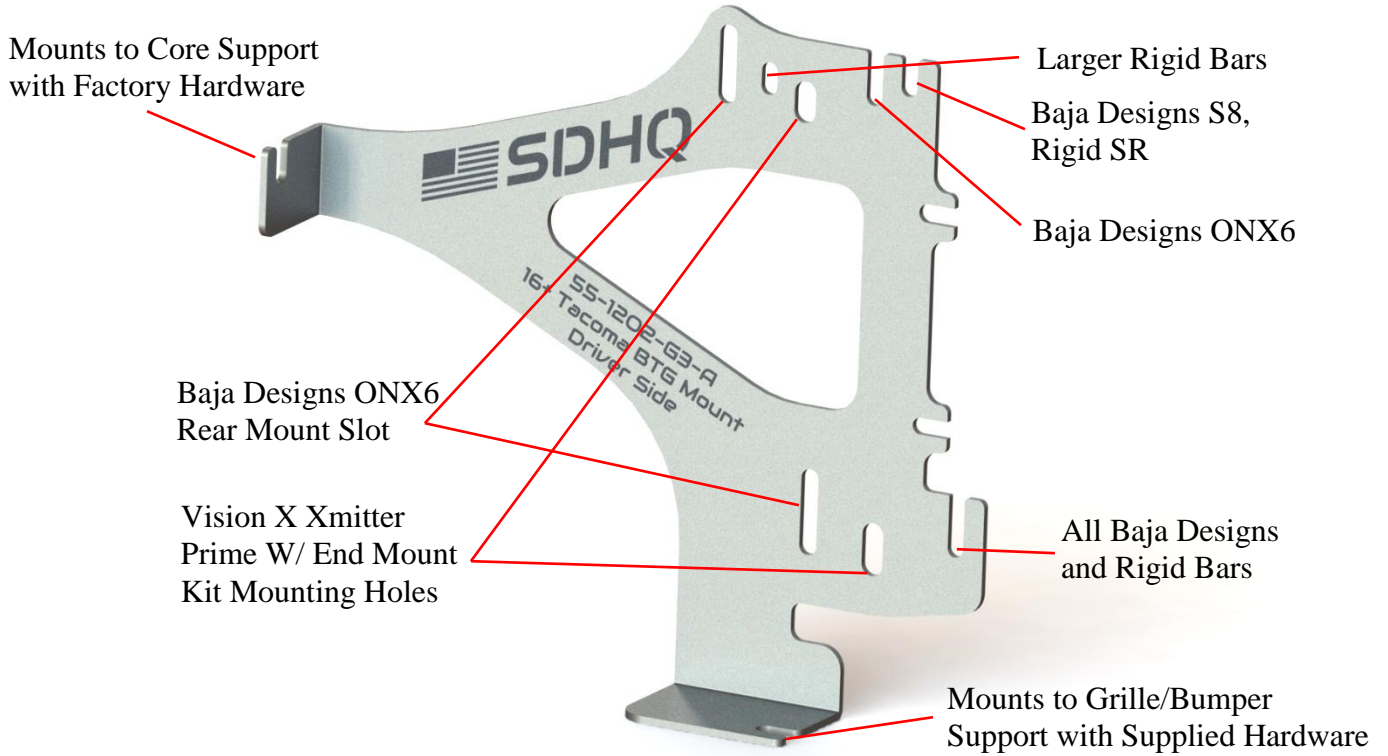
<u>Parts List</u>	<u>Hardware List</u>	<u>Required Tools</u>
(1) Driver Side Mount SDHQ-55-1202-G3-A (1) Passenger Side Mount SDHQ-55-1202-G3-B (1) Hardware Package SDHQ-55-1202-G3-C	(2) 1/4"-20 x 3/4" S.S. Hex Head Bolts (2) 1/4"-20 S.S. Lock Nuts (2) 1/4" S.S. SAE Flat Washers (2) 1/4" x 1 1/4" S.S. Flat Fender Washers	10mm Wrench/Socket 7/16" Wrench and Ratchet Appropriate wrenches or sockets to fit your Light Bar

Tech Notes

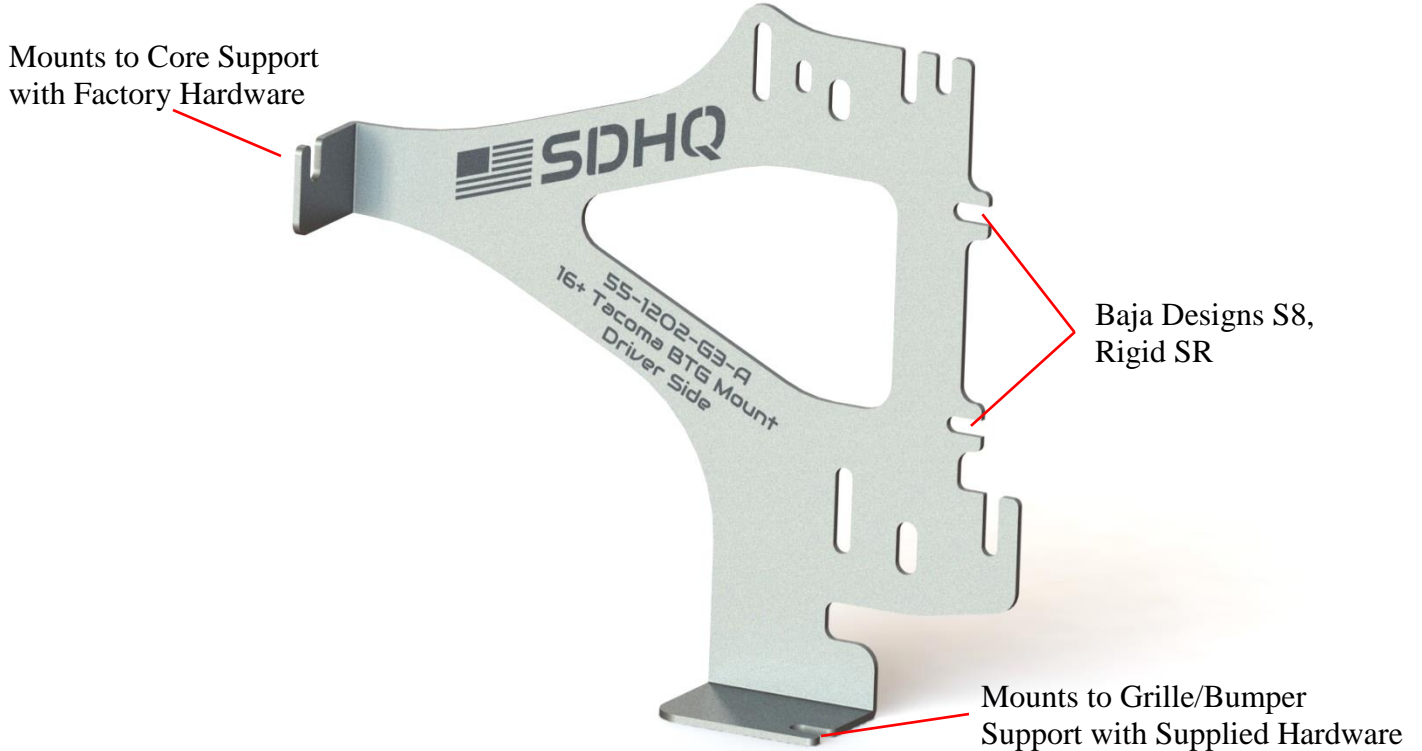
No Drilling Required
 Will Mount most 30" Light Bars in both the upper and lower grill location
 Some Light Bars may require minor trimming of plastic
Optional Add-on: 2016+ Tacoma BTG Dual 10" Light Mount (SDHQ-55-1220-G3)
Approx. Install Time: 1 hour (not including Wiring)

For questions or help with the installation, please call SDHQ Offroad @ 480-633-2929
 Mon.-Fri. 8:00am-5:30pm and Sat. 8:00am-3:30pm Arizona Time. www.sdhqoffroad.com

Non-SR5 Grille Options Driver Side Shown



SR5 Grille Options Driver Side Shown



***READ ALL INSTRUCTIONS THOROUGHLY FROM START TO FINISH BEFORE BEGINNING INSTALLATION! ***

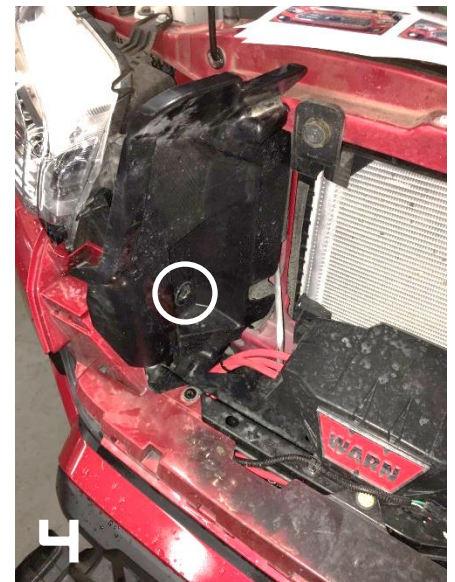
For questions or help with the installation, please call SDHQ Offroad @ 480-633-2929
Mon.-Fri. 8:00am-5:30pm and Sat. 8:00am-3:30pm Arizona Time. www.sdhqoffroad.com

Installation Instructions:

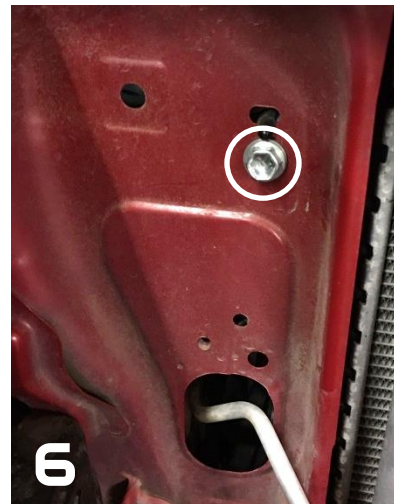
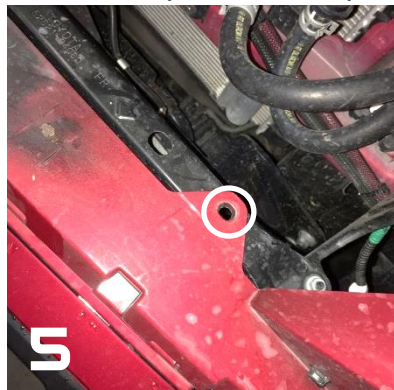
1. Unbox all parts and familiarize yourself with them. Verify all parts are present.
2. **Removing the Grille-** Remove the (2) 10mm head screws and (2) clips that attach the top of the grille to the truck.
3. Pull up and out on the top mounting ears where you removed the screws to get them free from the plastic inserts under them. Then gently pull the grille off of the front of the truck, the lower section simply pops off, and set the grille aside.



4. **Removing the Plastic Shrouds-** Remove the panel clip from the side of the shrouds and then pull the shrouds forward, the rear is simply clipped into place. These will not be reused.
5. **Installing the Brackets-** Remove the outer clip from the top of the bumper on each side.



6. Starting with the driver side, remove the 12mm bolt in the core support that attaches the top of the radiator.
7. Insert the driver side bracket with the bracket on top of the sheet metal bumper cover support, but under the bumper cover. Re-insert radiator upper mounting bolt. If SDHQ-55-1220-G3 was purchased, begin those instructions.
8. Using supplied 1/4" hardware, attach the bottom of the mount to the sheet metal bumper cover support, with the large fender washer on top of the bumper cover, and then tighten all hardware starting with the top radiator bolt. Repeat Steps 6 – 8 on the passenger side.



9. **Mount Lights-** Mount your lights in desired locations and wire to manufacture's specifications.
10. **Re-install Grille-** Re-install your grille in the reverse order that it came off. You are complete! Enjoy your new SDHQ Behind the Grille Light Mounts!

For questions or help with the installation, please call SDHQ Offroad @ 480-633-2929
Mon.-Fri. 8:00am-5:30pm and Sat. 8:00am-3:30pm Arizona Time. www.sdhqoffroad.com

*****Double check all hardware is installed correctly and tight*****

*****Re-torque ALL bolts after 100 miles*****



190 S McQueen Rd
Ste 109 Gilbert, AZ 85233
Phone: 480-633-2929 | Fax: 480-633-1791
www.sdhqoffroad.com

Follow us on:



Facebook



Instagram

For questions or help with the installation, please call SDHQ Offroad @ 480-633-2929
Mon.–Fri. 8:00am–5:30pm and Sat. 8:00am–3:30pm Arizona Time. www.sdhqoffroad.com