

MANAGING PUBLIC AND WORKPLACE CHARGING

# EV charging open ecosystem solutions

[usa.siemens.com/eMobility](https://usa.siemens.com/eMobility)

**SIEMENS**

**Siemens offers a variety of cloud service packages designed to simplify management and control of EV chargers. The flexibility of our services combined with our ecosystem of partners allows for varying levels of control in parking garages, hotels, hospitals, universities, industrial buildings, malls, retail / convenience stores, multi-family dwellings, and more. Integration into common building management systems and partner EV-solution provider networks expand the offerings to create a seamless, easy-to-use system with a simple user interface.**



The CONTROL package helps reduce installation costs, lowers ongoing electricity costs, and lets you charge more vehicles using the existing electrical infrastructure.

The Siemens CHARGE package allows easy pay-to-charge options based on energy costs, duration, time of use, session length or a driver group. Funds collected are electronically transferred to the owners bank account and year end tax forms are also provided. Driver payment is done through RFID or QR code allowing the user to pay with multiple digital payment methods.

Access statistical charts and analytics to help summarize important trends for planning and management reporting.

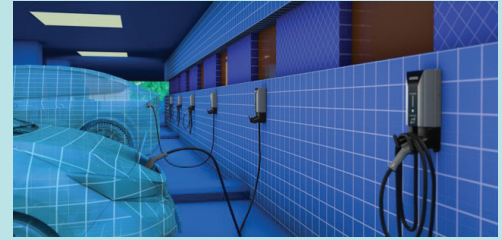
In addition, with a connection to the Siemens cloud, Siemens will ensure the chargers firmware is kept up to date ensuring support for all the new EV's coming into the market.

#### **Key benefits & features:**

- Monitors the health of the charging station equipment
- Activates and terminates charging events
- Initiates pay-as-you-go transactions
- Collects usage data from charging stations
- OCPP 1.6 compliant network
- Mobile application for enhanced driver experience
- Easy-to-use owner web portal

## Care package

Included with all the Siemens EV chargers, the Care package provides technical support, device updates, driver onboarding, setup configuration, and a mobile app for monitoring and basic control of one charger at a time. This package ensures your charger is up to date and provides piece of mind that support is at your fingertips!



Feature	Care	Charge	Control
Technical Support	x	x	x
Remote Firmware Upgrades	x	x	x
Charger Setup App	x	x	x
Remote Resets		x	x
Remote Diagnostics		x	x
RFID Management		x	x
Aggregated Charger Reporting		x	x
Driver App		x	x
Driver Billing		x	x
Charger Network Visibility		x	x
Dynamic Load Control			x
Max Load Management			x

These packages set the stage for the public workspace of the future where distributed generation and local micro grids are integrated into one common Smart Energy ecosystem. All of this provides you with the ultimate in functionality, both now and wherever the electric road will lead you.

### • **Charge package-**

The Charge package includes the care package plus enables users and owners to get a holistic view of the chargers they control along with an aggregated view of data gathered by those chargers. They also gain access to the Location Manager that shows where and how the chargers are being used, a Driver App, RFID setup for groups of chargers, and advanced remote diagnostics to give the charger owner more detailed information to manage the charging infrastructure. It also offers comprehensive financial and consumption reporting, billing and payment management for owners. This package is perfect for collecting revenue from charging stations within general public areas, or at a workplace environment where fleet and employee charging times and rates are different. The Charge package also enables charging stations to be seen and accessed within other charging networks. This allows public charging stations to be seen from other networks, when they are part of the Siemens Charge package solution, increasing visibility and usage.

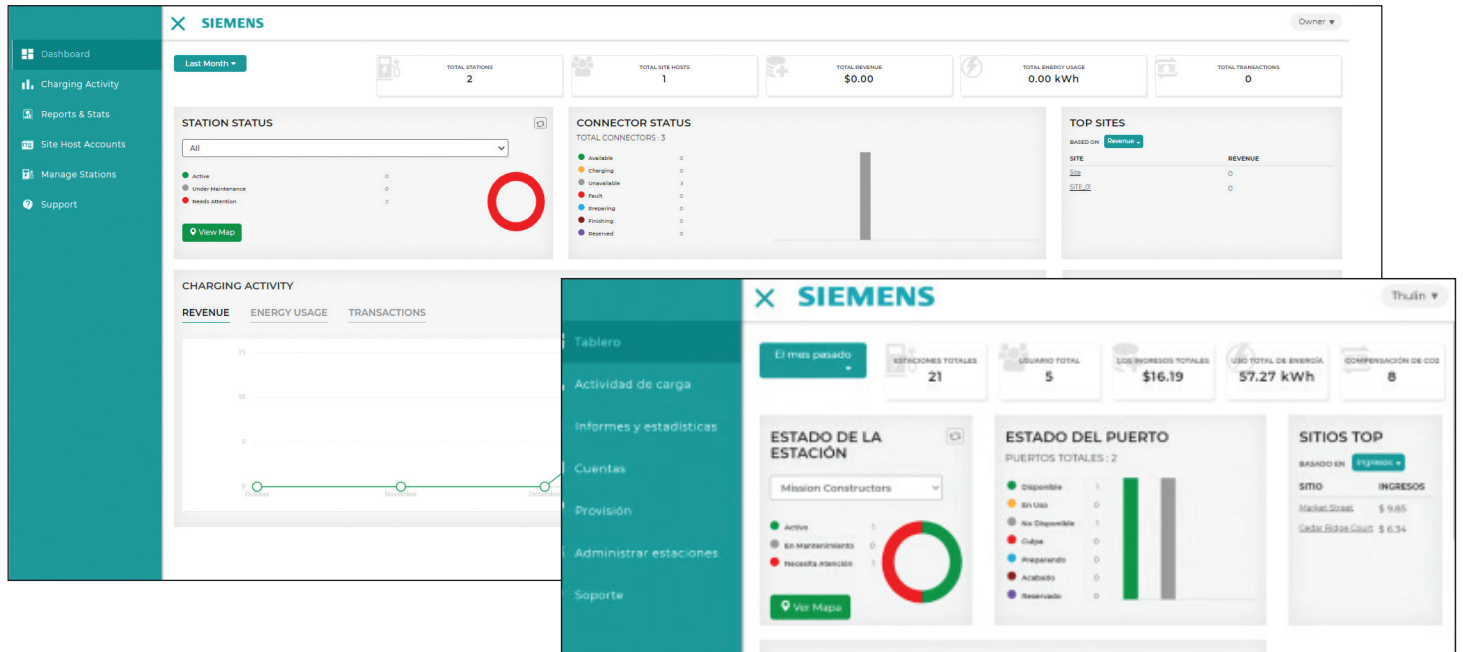
### • **Control package-**

The Control package continues capability expansion by supplying all of the same functions as the Charge package, and adds on cloud smart charging capabilities. The smart charging feature provides dynamic load management and maximum load control for situations where limited power is available for chargers or maximum demand constraints where tariffs are in place. This package allows piece of mind that power sharing chargers are not exceeding equipment load, or that the facility's peak demand levels are not exceeded.

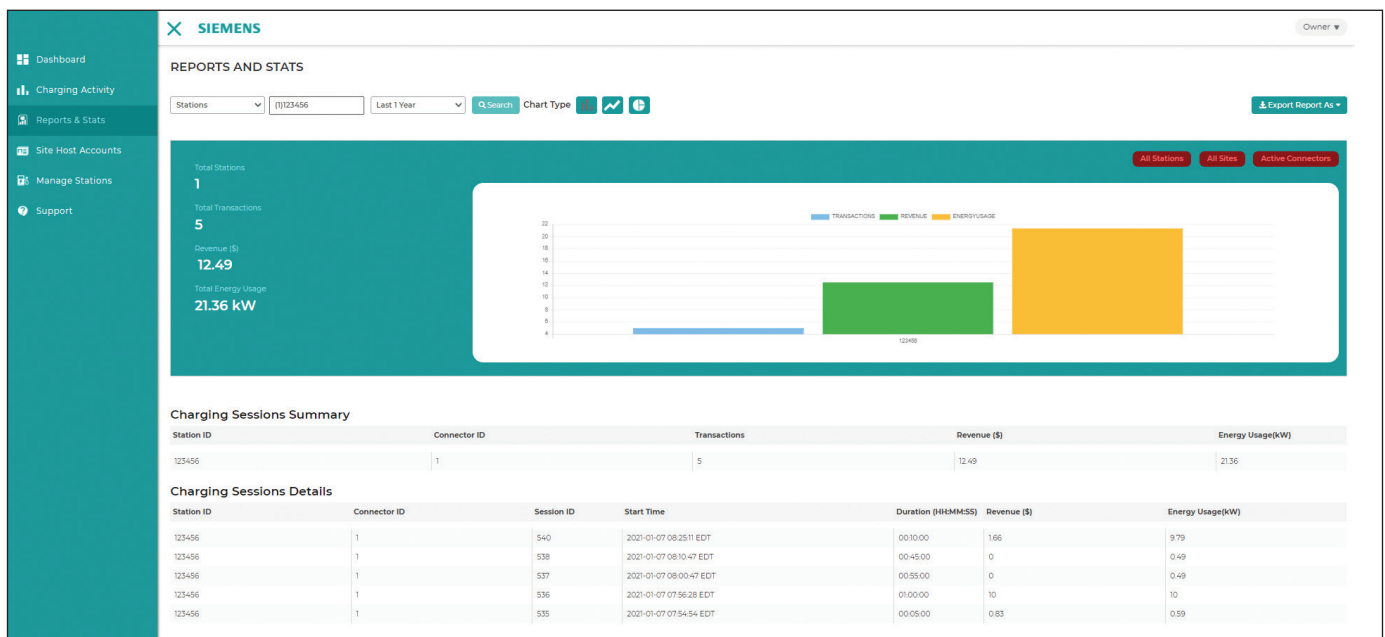
# Owner web portal

View station information, including station availability, Charging statistics, accessibility time and more

EV charger owners can quickly view all their charger's information from one easy to read dashboard. Review the charger's usage over time or in groups, manage stations remotely, setup billing rates by kw, time, special events and more. Dashboard screens are also available in Spanish.



Looking for email reports or notifications, the owner dashboard can provide that. The dashboard can be supplied with the owner's logo or name creating an individual layout for the owner. Support is always a click away with the integrated Support link.



# Pay-to-charge ability

As a station owner, the “Pay-to-Charge” ability of the Siemens chargers allows the EV driver the ability to use an RFID card or scan a QR code to activate the station. The rates an EV driver pays is set by the station owner and can be based on an energy usage (kW) supplied to the vehicle or a fixed time interval. The rates charged can vary by the hour, day or can be changed for special proportional events at any time. The station owner can edit the charging rates, connection fee or other fees at any time through the owner’s dashboard.

The Charge or Control packages monthly per charger fee supplies the owner with the dashboard, reporting, push emails, database administration, driver app, driver subscription management, account management and complete management of the payment & credit card processing. The station owner will receive a payment at the end of each month for the revenue earned with the stations. Also supplied to the station owner will be the year end 1099 tax form providing a complete solution to managing their EV charger installations.

The screenshot displays the owner's dashboard. At the top, there is an 'EDIT PLUG SETTINGS' modal window with the following fields:

- Site ID: 386
- Site Name: Cedar Ridge Court
- Vending Price Unit: Per kWh
- Vending Price per Unit: 0.38
- Curtailment Value(%): 100

Below this is the 'REPORTS AND STATS' section. It includes filters for 'Sites' (Market Street) and 'Last 30 Days'. A search bar and 'Chart Type' options are also present. The main content area shows a summary of key metrics:

- Total Stations: 2
- Total Transactions: 6
- Total Revenue: \$ 24.94
- Total Energy Usage: 91.92 kW

A pie chart titled 'TRANSACTIONS', 'REVENUE', and 'ENERGYUSAGE' is displayed, showing the distribution of these metrics. The 'ENERGYUSAGE' slice is the largest, followed by 'REVENUE', and 'TRANSACTIONS' is the smallest.

At the bottom, there is a 'Charging Sessions Summary' table with the following columns:

Station ID	Site ID	Site Name	Location	Transactions	\$	Energy Usage(kWh)
------------	---------	-----------	----------	--------------	----	-------------------

All the cloud service packages require a one-time setup fee and yearly subscription fee per charger. Each individual charging session will include the users energy usage cost, plus a cloud provider transaction fee and percentage fee that covers the credit card companies transaction fee. Charger owners will commonly include a one time transaction fee to any charging session to cover the cloud providers management costs.

# Mobile application partnering with EvGateway

Drivers can create accounts, login to review their charging session details, payments, edit their profiles, and more. In addition, EV drivers can activate EV charging stations via activated FOB ID guest code, EvGateway Mobile application, QR Code or customer support (available 24x7). Charging sessions can be initiated directly from the mobile application or by a Customer Support Specialist. Mobile app's are available for iOS and Android devices.



## Key Features

- Locate public EV chargers via the charging network map.
- View EV charger information & status, including address, real-time status, number of EV chargers and type, applicable hours, and directions to location and station.
- Notify when charging stations become available.
- View and receive charging status updates via driver account in mobile application.
- Report a station issue directly to the support team from the app with the ability to provide a description and image. Support team is available 24x7.
- Use credit card to pay for charging on a per-charge basis or setup a user account for even fast pay-to-charge ability.
- Mobile app and owner dashboard are available in Spanish.
- Additional charger owner feature: setup popup ads, coupons or special informative text messages once an EV owner logs into the charger to expand your companies marketing presence.



QR code for charger management



RFID on Versicharge commercial units provide secure hands-free ability to pay-to-charge.

# OCPP Control functionalities and security

The use of the secure open standard OCPP (open charge point protocol) communications built into all Siemens EV chargers and most chargers built today, allow for a seamless integration of your charging assets to the cloud. This communication allows the station owner to control all aspects of the charger remotely. Functionalities initiated from the charging station include the following:

- Authorize
- Real time information
- Meter values
- Start transaction
- Status notification

Additional information provided by the cloud server include:

- Change availability
- Change configuration
- Data transfer to other OCPP cloud systems
- Get configuration
- Remote start and stop transaction
- Reset
- Unlock connector
- Setup charger for Free charging

The screenshot displays the 'OCPP Functionalities' page in a web application. The top navigation bar includes: Dashboard, Charging Activity, Reports & Stats (active), User Profile, Sites, Stations, OCPP, Support, Load Management, Tariff, and Vehicle. The main content area is titled 'OCPP Functionalities' and features a 'Back' button in the top right corner. On the left, a dark blue sidebar lists various OCPP functions: Reset, Remote Start Transaction, Remote Stop Transaction, Change Availability, Unlock Connector, Change Configuration, Get Configuration, Clear Cache, Get Diagnostics, Update Firmware, Send Local List, Reserve Now, Trigger Message, Get LocalList Version, and Data Transfer. The main content area shows the 'Reset' form, which includes a 'Station Id' input field with the value '001063', a 'Reset Type' dropdown menu with 'Please Select' as the selected option, a 'Submit' button, and a 'Status' field below the form. A refresh icon is visible in the top right of the form area.

# Support

With the use of the Siemens support cloud package CARE, and our management packages CHARGE or CONTROL the station owner is provided with the piece of mind that their charging stations are being monitored and updated with the latest firmware available. Keeping the chargers up to date and functioning with all the new EV vehicles on the market.



## Some key features of the support include:

- 24X7X365 Technical Support
- Global Support Center
- Automatic Siemens charger updates
- Ongoing monitoring of Electric Vehicle Supply Equipment (EVSE) health and environmental statistics
- Personalized and comprehensive monthly Charging Activity Reports
- Best practice advice, and guidance from our Technical Expert Team on firmware or Hardware supports
- Capture of Proactive notification of critical EVSE performance.
- Billing and Accounting.



# I AC and DC Cloud, Charge and Control Packages:

## **Model Number: US2:ACCHARGE1**

Level 2 AC Charger - Yearly license fee “per charger” for EVSP service - 1 year service that includes Connect features plus financial and consumption reporting, billing report, QR code for charger and payment management for owners, driver billing and charger network visibility via app. On-boarding fee required.

## **Model Number: US2:ACCONTROL1**

Level 2 AC Charger - Yearly license fee “per charger” for EVSP service - 1 year service that includes Connect features plus financial and consumption reporting, billing and payment management for owners, driver billing and charger network visibility via app. On-boarding fee required.

## **Model Number: Contact Siemens**

Level 3 DC Charger - Yearly license fee “per charger” for EVSP service - 1 year service that includes Connect features plus financial and consumption reporting, billing report, QR code for charger and payment management for owners, driver billing and charger network visibility via app. On-boarding fee required.

## **Cloud Service On-Boarding - Required per charger:**

### **Model Number: US2:ACSETUP**

One-time Online commissioning fee “per charger” - NO ON SITE work. Required for any cloud service package.





**Legal Manufacturer**

Siemens Industry, Inc.  
3617 Parkway Ln  
Peachtree Corners, GA 30092  
United States of America

Telephone: +1 (800) 333-7421  
helpline.sii@siemens.com

Article No. SIDS-B40121-00-4AUS  
© 09.2021, Siemens Industry, Inc.

This document contains a general description of available technical options only, and its effectiveness will be subject to specific variables including field conditions and project parameters. Siemens does not make representations, warranties, or assurances as to the accuracy or completeness of the content contained herein. Siemens reserves the right to modify the technology and product specifications in its sole discretion without advance notice.