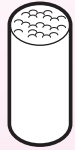


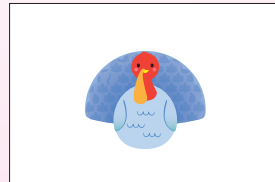


# INSTRUCTION GUIDE

6+



POM POMS  
X150



1 TURKEY CUTOUT



ROLL OF 170  
STICKY DOTS



1 POSTER

**WARNING:**  
CHOKING HAZARD - Small Parts.  
Not for Children under 3 years.

Caution! Please keep adhesive dots away from both child's and pet's hair to avoid entanglement.

Customer Service: 1-800.843.6292 or 424.201.2225 [www.pompomwow.com](http://www.pompomwow.com)

© 2017 Maya Toys. All rights reserved. PATENT PENDING.

Conforms to safety standards ASTM F963 and ASTM D4236. Do not eat Pom Pom or place in mouth. Do not insert Pom Pom into nose or ears. If a substantial number of Pom Poms are inserted into nose or ears, seek immediate medical attention. Bring this instruction guide and some Pom Poms with you. Not suitable for children under the age of six. Please remove all packaging materials before giving to children. Product and colors may vary. Please retain this information for future reference.

Maya Toys, 10741 Walker St., Cypress, CA 90630.

Made in China.

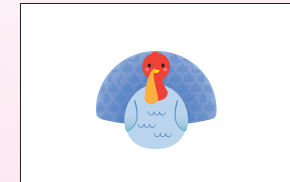


# INSTRUCTION GUIDE

6+



POM POMS  
X150



1 TURKEY CUTOUT



ROLL OF 170  
STICKY DOTS



1 POSTER

**WARNING:**  
CHOKING HAZARD - Small Parts.  
Not for Children under 3 years.

Caution! Please keep adhesive dots away from both child's and pet's hair to avoid entanglement.

Customer Service: 1-800.843.6292 or 424.201.2225 [www.pompomwow.com](http://www.pompomwow.com)

© 2017 Maya Toys. All rights reserved. PATENT PENDING.

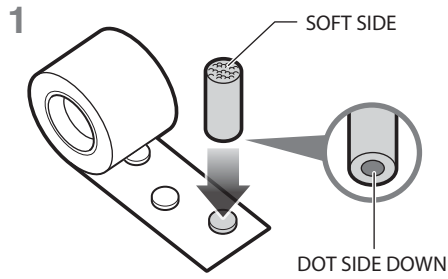
Conforms to safety standards ASTM F963 and ASTM D4236. Do not eat Pom Pom or place in mouth. Do not insert Pom Pom into nose or ears. If a substantial number of Pom Poms are inserted into nose or ears, seek immediate medical attention. Bring this instruction guide and some Pom Poms with you. Not suitable for children under the age of six. Please remove all packaging materials before giving to children. Product and colors may vary. Please retain this information for future reference.

Maya Toys, 10741 Walker St., Cypress, CA 90630.

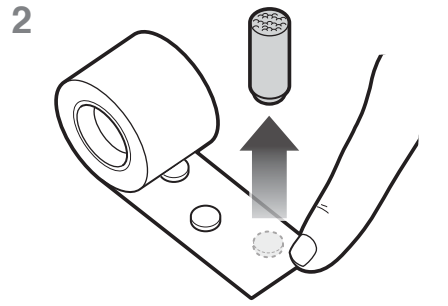
Made in China.



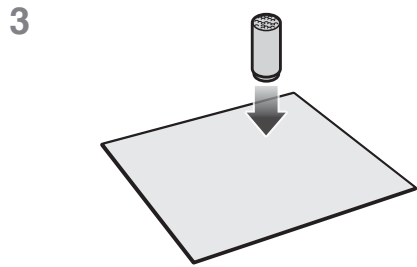
## HOW TO ATTACH A POM POM



Press POM POM, SOFT SIDE UP/DOT SIDE DOWN, onto STICKY DOT.

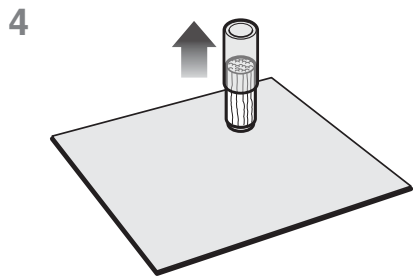


Lift up to remove POM POM with STICKY DOT.

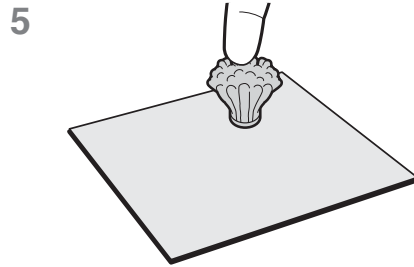


**Caution!** Sticky dots may damage or stain some surfaces. Please only use adhesive dots provided with this toy.  
Note: Pom poms do not stick to all surfaces equally. Performance may vary.

Stick POM POM onto included POSTER, matching pom to color area. Press down firmly.



Remove the POM POM TUBE.



Fluff the POM POM out.

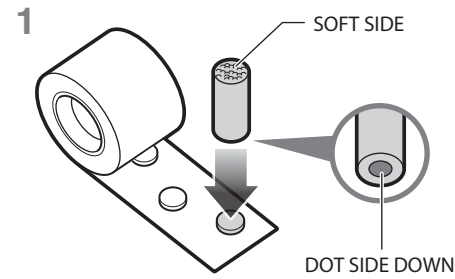


Add POM POMS to the feathers with matching colors.

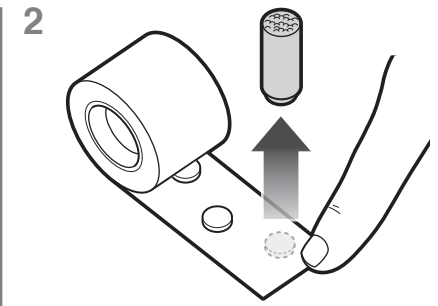


Cut and paste TURKEY CUTOUT onto POSTER.

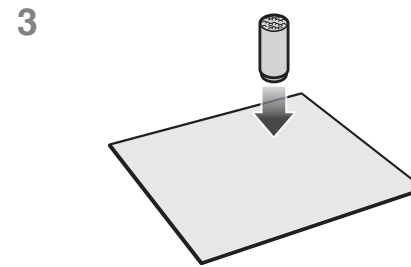
## HOW TO ATTACH A POM POM



Press POM POM, SOFT SIDE UP/DOT SIDE DOWN, onto STICKY DOT.

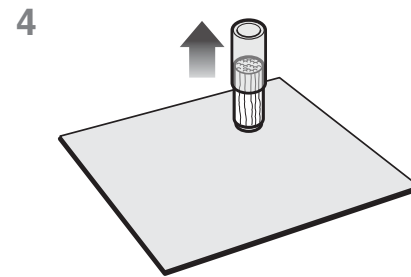


Lift up to remove POM POM with STICKY DOT.

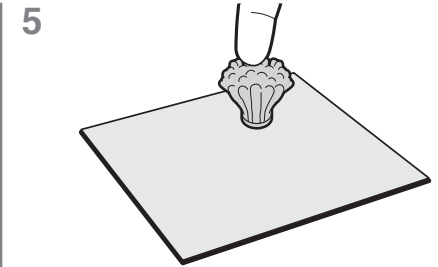


**Caution!** Sticky dots may damage or stain some surfaces. Please only use adhesive dots provided with this toy.  
Note: Pom poms do not stick to all surfaces equally. Performance may vary.

Stick POM POM onto included POSTER, matching pom to color area. Press down firmly.



Remove the POM POM TUBE.



Fluff the POM POM out.



Add POM POMS to the feathers with matching colors.



Cut and paste TURKEY CUTOUT onto POSTER.