

Instruction Manual

ZeroLemon iPhone 13 Pro Max RuggedJuicer 10000mAh Battery Case

Model Number: Y1379



User Manual

Thank you for purchasing our product. For optimal performance and safety, please read these instructions carefully before operating the product. Please keep this manual for future reference.

Specifications

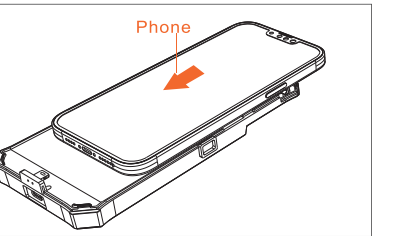
Battery Capacity	10000mAh
Battery Type	Lithium Polymer
Input	DC 5V-1.5A
Output	DC 5V-1.5A
Wireless Charge Input	DC 5V-1A
Dimension	6.70x3.46x0.80 inches
Weight	244.7g/8.63 oz

Features

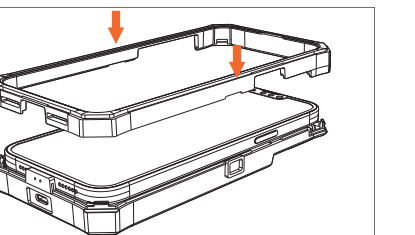
- Design for iPhone 13 Pro Max.
- Provide Extra Battery Life.
- Qi Wireless Charging Compatible.
- Supports Lightning Charge and Earphones.

Installation:

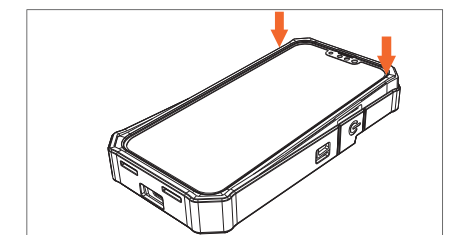
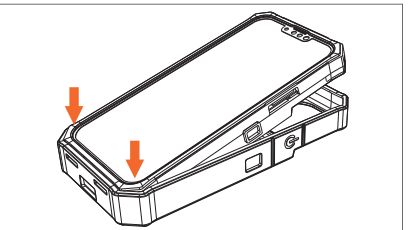
1.Insert the phone to the battery pack.Make sure the charging connector and the phone are connected securely.



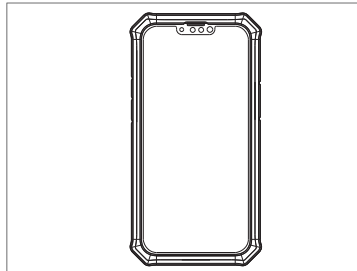
2.Place the hard plastic frame onto the battery pack. Make sure all features are lined up.



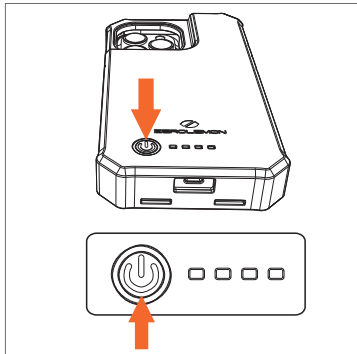
3.Insert the battery pack into the rugged TPU case from the bottom.Press properly on the top of the battery pack to secure the case.



4.Installation completed.



5.Hold the power button for 3 seconds on the back of the case to turn on the battery case and start charging.



Charging the battery case and your phone

- Connect your battery case (iPhone already installed) to the power cable.
- Connect the power cable to any power source to start charging. The battery case is programmed to let the iPhone charged first, then the battery case.
- Charge until the LED indicators indicate fully charged (all 4 LEDs are solid).

Charging your phone using the battery case

- Hold the power button for 3 seconds to turn on the battery case and start charging your phone. The phone will be charged continuously if you don't turn off the battery case.
- Hold the power button for 3 seconds to deactivate the battery case and stop charging.

Package Contents

- 1 x 10000mAh Power Pack
- 1 x Rugged Case
- 1 x Frame Protector
- 1 x User Manual / Warranty Card
- 1 x Screen Protector

Notes:

- Start charging before the phone is powered off

- To check the remaining power, hold the power button for 3 seconds.
- Adhere the screen protector to the phone after battery case is installed.

How to Test the Remaining Power

Charging Indicator Status

POWER	LED1#	LED2#	LED3#	LED4#
75%~100%	●	●	●	●/●
50%~75%	●	●	●	○
25%~50%	●	●	○	○
1%~25%	●	○	○	○
0%	○	○	○	○

● - On ○ - Blink ○ - Off

Discharge Indicator Status

POWER	LED1#	LED2#	LED3#	LED4#
75%~100%	●	●	●	●/●
50%~75%	●	●	●	○
25%~50%	●	●	○	○
1%~25%	●	○	○	○
0%	○	○	○	○

● - On ○ - Blink ○ - Off

Warning

- Read all instructions and warnings first before using this product. Improper use may result in product damage, excess heat, toxic fumes, fire or explosion. For such damages you (the Purchaser) and not the Manufacturer are responsible.
- Do not store this battery case in a high temperature environment, including in directly exposure to sunlight.
- Do not place battery case into a fire or other excessively hot environment.
- Be cautious of excessive drops, bumps, abrasions, or other impacts to this battery. If there is any damage to the battery such as dents, punctures, tears, deformities, or corrosion due to any cause, discontinue use, contact manufacturer or dispose of it in an appropriate manner at your local battery-recycling center.
- Do not disassemble this battery case or attempt to re-purpose or modify it in any manner.
- Do not expose this battery case to moisture or submerge it in liquid. Keep battery dry all the time.

Warning

- Do not attempt to charge battery case using any method, apparatus, or connection other than the device's lightning connector and wireless chargers.
- Do not attempt to replace any part of this battery.
- If the battery case is intended by Purchaser to be used by a minor, purchasing adult agrees to provide detailed instructions and warnings to any minor first before using. Failure to do so is sole responsibility of purchaser, who agrees to indemnify manufacturer for any unintended use/misuse by minor.
- All battery cases have gone through a thorough quality assurance inspection.
- If you find your battery is excessively hot, emitting, odor, deformed, abraded, cut or experiencing an abnormal phenomenon, stop using the battery immediately and contact Manufacturer.
- For extended storage, firstly charge your battery case for one hour.
- Never dispose the battery case in the garbage, which is unlawful under state and federal environment laws and regulations.

- Always take used batteries to your battery-recycling center.

Warranty

This product is covered by a warranty of 365 days from the date of purchase.

Contact US

For any inquiries or comments concerning our products, please send an e-mail to info@zerolemon.com or call us at 1-415-685-4343, and we will respond to you as soon as possible.

Statement

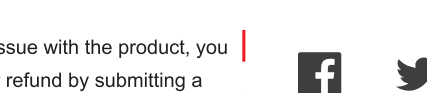
- We are only able to provide after-sales service for purchases made directly from ZeroLemonOfficial or our authorized resellers. If you purchased through an unauthorized retailer, please contact them for any exchange or refund requests.
- Please note that unauthorized reselling of ZeroLemon products is prohibited.

Please review us on Amazon Product Review

Like: Please help us spread the word of our products by reviewing us at www.amazon.com/review/create-review.

Not Like: At any time if you're not satisfied with our products or service, please let us know at info@zerolemon.com or call us at 1-415-685-4343. We will do our best to help you. Your satisfaction is our number 1 priority.

Subscribe to our social media channels for more deals and news!



Sales Inquiry: sales@zerolemon.com

Made in China

Copyright 2021 ZeroLemon, LLC All Rights Reserved

All names, brands, logos and/or trademarks used in this publication are property of their respective owners.

www.zerolemon.com