

⚠ Safety instructions

- This appliance can be used by children aged from 8 years and above if they have been given supervision or instruction concerning use of the appliance in a safe way and if they understand the hazards involved. Cleaning and user maintenance shall not be made by children unless they are older than 8 and supervised.
- Keep the appliance and its cord out of reach of children aged less than 8 years.
- Appliances can be used by persons with reduced physical, sensory or mental capabilities or lack of experience and knowledge if they have been given supervision or instruction concerning use of the appliance in a safe way and understand the hazards involved.
- Children shall not play with the appliance.
- If the supply cord is damaged, it must be replaced by the manufacturer, its service agent or similarly qualified persons in order to avoid a hazard.
- This appliance should only be connected to an earthed socket installed in accordance with the regulations. Make sure that the supply voltage corresponds with the voltage marked on the rating label.
- In order to avoid hazards, repairs to this electrical appliance must be carried out by our customer service. After sales services are provided by the authorised Arzum Okka dealer in your country, please contact Arzum Okka Turkey After Sales Department via telephone.
- To avoid the risk of electric shock, do not clean the appliance with water and do not immerse it in water.
- Allow the appliance to cool down completely before cleaning. For detailed information on cleaning the appliance, please refer to the section 'Self-cleaning'.
- Do not use the appliance outdoors. Protect it from zero or sub-zero temperatures at all times.
- For details on how to clean the surface in contact with food, please refer to self-cleaning section.
- **Caution:** The brewing chamber head and the coffee serving nozzle become hot during use and there is a danger of scalding from escaping steam.
- **Caution:** The heating element surface is subject to residual heat after use.
- **Caution:** Never open the brewing chamber lid, never remove the brewing chamber head or never put your hands under the coffee serving nozzle while there is a brewing or cleaning cycle in progress, or during the automatic determination of the boiling point. There is a serious danger of scalding.
- Before the appliance is used, the main body as

- well as any attachment fitted should be checked thoroughly for any defects. Should the appliance, for instance, have been dropped onto a hard surface, it must not be used any longer. Even invisible damage may have adverse effects on the operational safety of the appliance.
- The power cord must be kept away from hot parts of the appliance.
- Do not leave the appliance unattended while in use. Do not position the appliance on or near hot surfaces (e.g. hot stove tops), open flames or inflammable vapours.
- Always use the appliance on a plane and level surface. Otherwise it might come to disfunction during the coffee preparation.
- Always remove the plug from the wall socket, during extended periods of non-use, in case of any malfunction, in case of danger.
- When removing the plug from the wall socket, never pull on the power cord, always pull the plug itself.
- Do not block the ventilation slots! Do not pour any liquid or powder inside the ventilation slots.
- Before the appliance is connected to the mains supply, always ensure that the water chamber has been filled, the waste water tray and brewing chamber head have been fitted and the waste water tray is empty.
- No responsibility is accepted if damage results from improper use or if these instructions are not complied with.

Intended use

This appliance is only intended for preparing turkish coffee in household and similar applications such as: staff kitchen areas in shops, offices and other working environments, farm houses, by clients in hotels, motels and other residential type environments and bed and breakfast type environments. The tool is not intended for commercial use. Only use according to these instructions. Improper use can cause severe personal injury and will void any warranty claim. Observe the safety instructions.

Dear Customer

Thanks for your purchase of an Arzum Okka Turkish Coffee Machine. Please read this manual carefully and keep it for further use.

Overview

- 1 Brewing chamber lid
- 2 Coffee serving nozzle
- 3 Temperature sensor
- 4 Cup stand & waste water grid
- 5 Waste water tray
- 6 Arzum Okka spoon
- 7 Brewing chamber head
- 8 Water chamber lid
- 9 Piston
- 10 Mixer
- 11 Water chamber
- 12 Slow brewing button
- 13 Single-cup button
- 14 Double-cup button
- 15 Self-cleaning button
- 16 Warning LEDs & Signs
- 17 Supply cord and plug
- 18 Cup size selector switch
- 19 On/Off button

Before first time use

Remove all packaging materials and fixings. When the product is turned on for the first time, it will go through an initialization process. For a perfect taste, clean all detachable parts and run the 'Self-cleaning' program.



Before use

1. Fill the water chamber with fresh cool water to the MAX level and reattach it to the appliance.
2. Remove the Arzum Okka spoon from the waste water tray and check if it is clean. Reattach it to the appliance.
3. Plug in the appliance, set the desired cup size and press on/off button for 2 sec.
 - ☕ 52 ml water
 - ☕ 60 ml water
 - ☕ 68 ml water

Prepare one cup

1. Open the brewing chamber lid.
2. Fill in one Arzum Okka spoon (7g) of ground Turkish coffee.
3. Add the desired amount of sugar. One teaspoon per cup is recommended.
4. Close the brewing chamber lid.
5. Place a single cup on the cup stand below the coffee serving nozzle.
6. If desired, press the slow brewing button which enriches the flavour of the coffee.
7. Press the single-cup button.

⚠ Caution!
Hot liquid!
8. Remove the cup once the LEDs stop flashing and an acoustic signal is emitted.

Prepare two cups / Double cup

1. Open the brewing chamber lid.
2. Fill in two Arzum Okka spoons (14g) of ground Turkish coffee.
3. Add the desired amount of sugar. One teaspoon per cup is recommended.
4. Close the brewing chamber lid.
5. Place two cups on the cup stand below the coffee serving nozzle.
6. If desired, press the slow brewing button which enriches the flavour of the coffee.
7. Press the double-cup button.

⚠ Caution!
Hot liquid!
8. Remove the cups once the LEDs stop flashing and an acoustic signal is emitted.

Disposal

The crossed-out wheeled bin logo requires the separate collection of waste electric and electronic equipment (WEEE).

Such equipment may contain dangerous and hazardous substances. These tools must be returned to a designated collection point for the recycling of WEEE and must not be disposed as unsorted municipal waste. By doing so, you will help to conserve resources and protect the environment. Contact your local authorities for more information.

Children must not play with plastic bags and packaging material, due to possible injury or danger of suffocation. Store such material safely or dispose of environmentally friendly.



Arzum Elektrikli Ev Aletleri San. ve Tic. A.Ş.
Otaçlılar Caddesi No: 78 Kat I B Blok No: B I b
Eyüp 34050 İstanbul Türkiye
Tel: +90 212 467 80 80 Fax: +90 212 467 80 00
www.arzumokka.com

Arzum_Okka_V2.1_CHR_09-2015

Self-cleaning



1. Press the self-cleaning button.

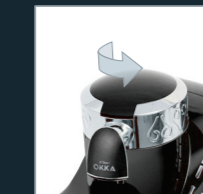
Press the self-clean button shortly for rinsing.

Press the self-clean button longer than 2 seconds for detailed cleaning.

Timings and Water Usage:

Rinsing: 45 s (+/- 5), 45 ml (+/- 5)
Cleaning: 120 s (+/- 5), 180 ml (+/- 5)

Detailed cleaning



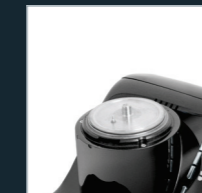
2. Once a double acoustic signal is emitted, the brewing head can be turned anti-clockwise for manual cleaning.



3. Remove the brewing head upwards.



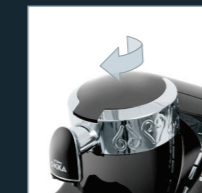
4. The piston is now in its raised position for cleaning. Remove the mixer from the piston and clean it thoroughly.



5. Carefully clean the piston with a cloth dampened with vinegar. Afterwards clean with a cloth dampened with water.



6. Reattach the mixer and brewing head.



7. Lock the brewing head in place by turning it clockwise. The appliance is ready for use again.

After use



1. Switch off the appliance. A rinsing cycle starts automatically.



2. Remove the water chamber from the appliance, empty it and clean it thoroughly.



3. Remove the waste water tray from the appliance, empty it and clean it thoroughly.



4. Clean the cup stand if necessary and unplug the appliance from the mains supply.

Energy saving

To save energy, the appliance switches to stand-by after 30 minutes of inactivity with the slow brewing button turning red.

Press any button to quit the stand-by mode and use the appliance immediately.

After 3 hours of inactivity, the appliance will run a rinsing cycle and switch off automatically. To use the appliance again, press the on/off button.

Cleaning the exterior

Caution! Make sure the appliance is switched off, unplugged and has cooled down completely.

Caution! Do not immerse the appliance in water, nor clean it with any kind of liquid to avoid the risk of an electric shock.

1. Clean the exterior housing with a slightly damp, soft and lint-free cloth. Do not use harsh cleaning agents, as they can damage the housing.
2. All removable parts can be hand cleaned with warm soapy water. **The parts are not dishwasher safe.**
3. The coffee serving nozzle should be removed and cleaned daily.

Boiling point

The boiling point of water depends on the altitude above sea level. The appliance determines the boiling point automatically.

When the appliance is used for the first time, the boiling point is set immediately. The water chamber should be filled before turning the appliance on. The boiling point must be set again if the height above sea level has changed:

Reset the boiling point

1. Fill the water chamber and make sure the waste water tray is empty.
2. Remove the brewing head by turning it anti-clockwise.
3. Press the and buttons at the same time until the LEDs start to flash.
4. Reattach the brewing head by turning it clockwise and make sure it is securely locked into position.
5. After 3 seconds, an acoustic signal is emitted and the boiling point detection process starts.

Brewing temperature

The coffee brewing temperature can be set individually. To do so, remove the brewing head by turning it anti-clockwise:

Increasing the temperature

Keep the button pressed. Each time the button is pressed, the temperature increases by 1 °C.

Decreasing the temperature

Keep the button pressed. Each time the button is pressed, the temperature decreases by 1 °C.

Reset the temperature

Press the and buttons simultaneously for about 1 second.

Three acoustic signals indicate min. or max temperature is reached. Reattach the brewing head by turning it clockwise.

Warnings

Upper LED :
Water chamber empty or not fitted properly.
Middle LED :
Brewing chamber head not fitted properly.
Lower LED :
Waste water tray is full or not fitted properly.

An acoustic signal indicates that a process has been finished, a function has been selected or a component has been removed or reattached.

Troubleshooting

PROBLEM	CAUSE	SOLUTION
Appliance interrupts during a boiling or self-cleaning process.	The water chamber is empty. The water chamber is removed. The brewing head is removed. The waste water tray is full.	Fill the water chamber with fresh water. Insert the clean and filled water chamber into the appliance. Apply the brewing head to the appliance. Empty and clean the waste water tray.
Power failure.	The unit is off after a power failure in the mains supply.	Switch the appliance on by use of the On/Off switch at the back of the appliance. The appliance is performing a self-test afterwards. It can be reused once all LEDs are on.
All warning LEDs are flashing accompanied by an acoustic signal.	Technical fault in the appliance.	Restart the appliance. If problem persists, please contact the Arzum Okka Customer Service.

Technical data

Rated voltage: 220-240 V~
Rated frequency: 50/60 Hz
Rated power input: 710 W

Contact information

Tel: +90 212 467 80 80 arzum@arzum.com
Fax: +90 212 467 80 00 www.arzumokka.com

arzum
OKKA



USER MANUAL
English / Original Instruction