

Pu2mat - how to get started!



1. Begin by reading the instructions in the black star in the bottom right corner.

2. Cut out the purple area in the bottom left corner.

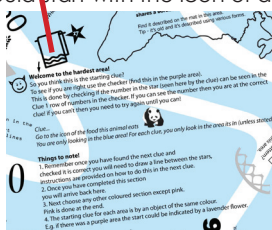
3. Read the Aim, Set-Up and Objective 1. Key points from this are:

- The aim is to solve the puzzles in each of the 6 areas which create shapes you cut out to then use to crack the password.
- You are directed to an area to start, after this choose any colour in any order except pink. Pink is always done last.
- To start, you will be directed to an area but it always finish with the pink, in the middle choose what you like.
- Some of the clues are red herrings.
- After you've done this move to Objective 2.

4. The instructions in Objective 1 explain that the game is started with the riddle in the middle, answer this and it will lead you to an area to start. In this case the answer to the riddle 'What get's wet while drying?' is 'a towel' thus you look for an icon of a towel on the mat.

This is found in the blue area as shown below, so you start by answering the clue next to the towel and then continue to answer all the clues in the blue area (always look for the answer in the area of the clue unless stated).

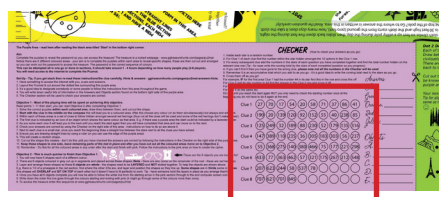
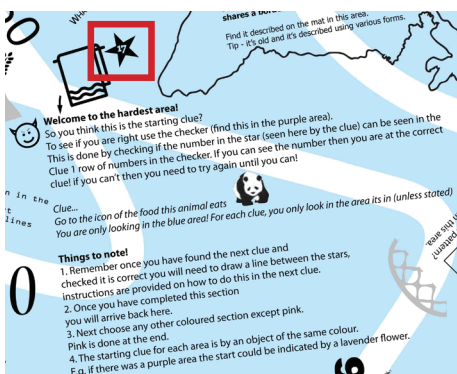
After finishing the blue section you can choose any other colour area to do next except pink (pink is done last) you can also do areas at the same time if you have enough people. The first clue in each area always starts with the only object that shares the same colour of that area - e.g. if there was a purple area this could start with the icon of a lavender flower.



5. Before starting any clue you should check it using the checker this is used to ensure you are on the right path. The Checker can be found on the right side of the purple area and works like so:

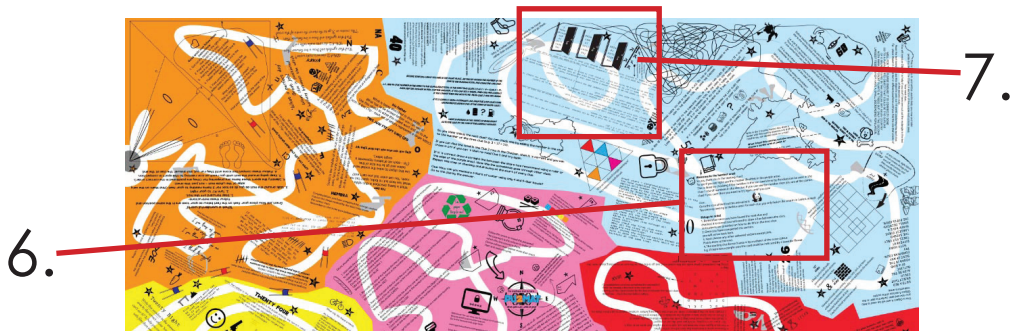
A. Find the number in the star next to the clue, here it is number 17.

C. Look in the Clue 1 row of the Checker to see if you can find the number 17.



If you can find it then this means you are correct, cross it off and continue. If you can't it means you are in-correct and need to try again until you are at the right clue.

Clue 1	27	70	17	54	20	58	71	37	86	41
Clue 2	190	20	139	120	92	152	55	40	238	85
Clue 3	125	249	32	189	88	230	52	179	135	316
Clue 4	147	389	110	235	36	305	183	303	56	237
Clue 5	55	368	275	140	380	466	75	177	221	298
Clue 6	433	77	363	462	57	321	175	267	212	548
Clue 7	207	623	244	58	537	78				
Clue 8	707	621	701	845						



6. The first clue is

Clue: Go to the icon of the food this animal eats



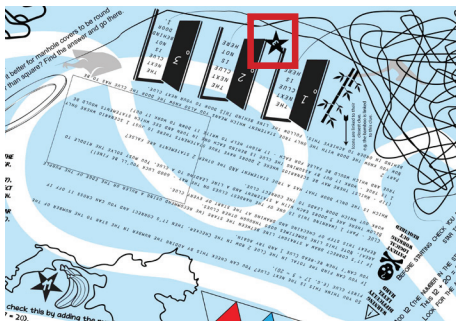
Pandas eat bamboo so look for an icon of bamboo within the blue area (clues are always answered within their area unless otherwise stated).

7. This will bring you to the clue below which is by a symbol of bamboo, before starting you should ensure you are correct by using the Checker. This is done in the same way as the first but because it is the 2nd Clue you add the number in the star to the first:

A. Find the number in the star next to the clue, here it is number 3.

B. Add number 3 to the number from the first clue: $17 + 3 = 20$

C. Look in the Clue 2 row of the Checker to see if you can find the number 20.



If you can find it then this means you are correct, cross it off and continue. If you can't it means you are in-correct and need to try again until you are at the right clue.

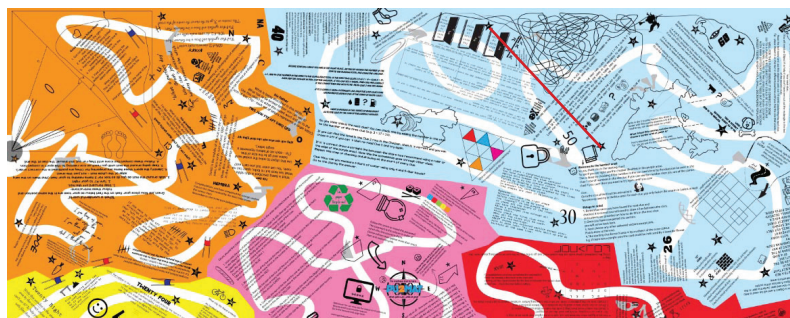
Clue 1 add its star number to the running total, find this number in the Clue 3 row and cross it off
 Clue 2 do the same etc.
 until you reach the start again BUT you only need to check the starting number once at the end you do not have to do it again at the end.

Clue 1	(27)	(70)	(17)	(54)	(20)	(58)	(71)	(37)	(86)	(41)
Clue 2	(190)	(20)	(139)	(120)	(92)	(152)	(55)	(40)	(238)	(85)
Clue 3	(125)	(249)	(32)	(189)	(88)	(230)	(52)	(179)	(135)	(316)
Clue 4	(147)	(389)	(110)	(235)	(36)	(305)	(183)	(303)	(56)	(237)
Clue 5	(55)	(368)	(275)	(140)	(380)	(466)	(75)	(177)	(221)	(298)
Clue 6	(433)	(77)	(363)	(462)	(57)	(321)	(175)	(267)	(212)	(548)
Clue 7	(207)	(623)	(244)	(58)	(537)	(78)				
Clue 8	(707)	(621)	(701)	(845)						

Blue.
Green.
Orange.
Red.
Yellow.
Objects
A.
B.
C.
D.
E.

NOTE - the checker continues like this with a running total. However for each new area start again from the number in the star by the first clue and in the Clue 1 row of the Checker.

8. Now you can confirmed that you are in the right place you can draw a straight line between the stars of the 2 clues:



9. Repeat this process of answering the clues, checking you are in the right place and drawing a line between the stars until eventually you come back to the start, cut out the shape created at the end. Note - not all the clues will be used, some are red herrings.

10. After finishing blue attempt any of the colours except pink - pink is done last. Remember the starting clue is always the only clue with an icon that shares the same colour as the area it's in e.g. if there was a purple area this could start with the icon of a lavender flower.

11. After starting pink you will notice it is completed slightly differently to the other areas, please follow the instructions from the first clue. Note - it is not checked in the same way as the other areas.

12. After you have 6 shapes you can move onto Objective 2 which is much quicker than the first and explained in the bottom left corner of the purple area.