



Facebook



Twitter



Youtube



kakaindustrial-USA

KAKA INDUSTRIAL LLC

4200 STEVE REYNOLDS BLVD, SUITE 6, NORCROSS , GA, 30093, USA

Phone: 470-282-5298 Web-site: www.kakaindustrial.com

Email: info@kakaindustrial.com



Automobile Fabrication



Band Saw



Belt Grinder



Drilling Machine



Hydraulic Shearing



Manual Shear



Pan & Box Brake



Pressing & Clamping



Slip Roll



Shrinker & Stretcher




Tube Roller



Universal Bender

CONTENT

	P 02-06	Band Saw
	P 07-10	Belt Grinder
	P 11-14	Vertical Drilling
	P 15-16	Deburring Cutter
	P 17-26	Shearing
	P 27-36	Brake
	P 37-40	Slip Roll
	P 41-56	Forming
	P 57-58	Clamping

MAKE WHAT YOU LIKE !

Various type of fabrication tools, More than 100 models.

KNKN®  **Make what you like**
metal-working machinery



METAL CUTTING BAND SAW

• BS-85 • BS-712N • BS-712R • BS-912B • BS-1018B



7" METAL CUTTING BAND SAW **BS-712N**

- Adjustable hydraulic control cutting feed for different materials
- Built-in coolant system
- Automatic shut off when cutting done
- Vertical working position available
- 4 step blade speed by pulley wheel driven
- Adjustable roller guide and steel wire brush to prolong the blade service life
- Fast release clamp vice

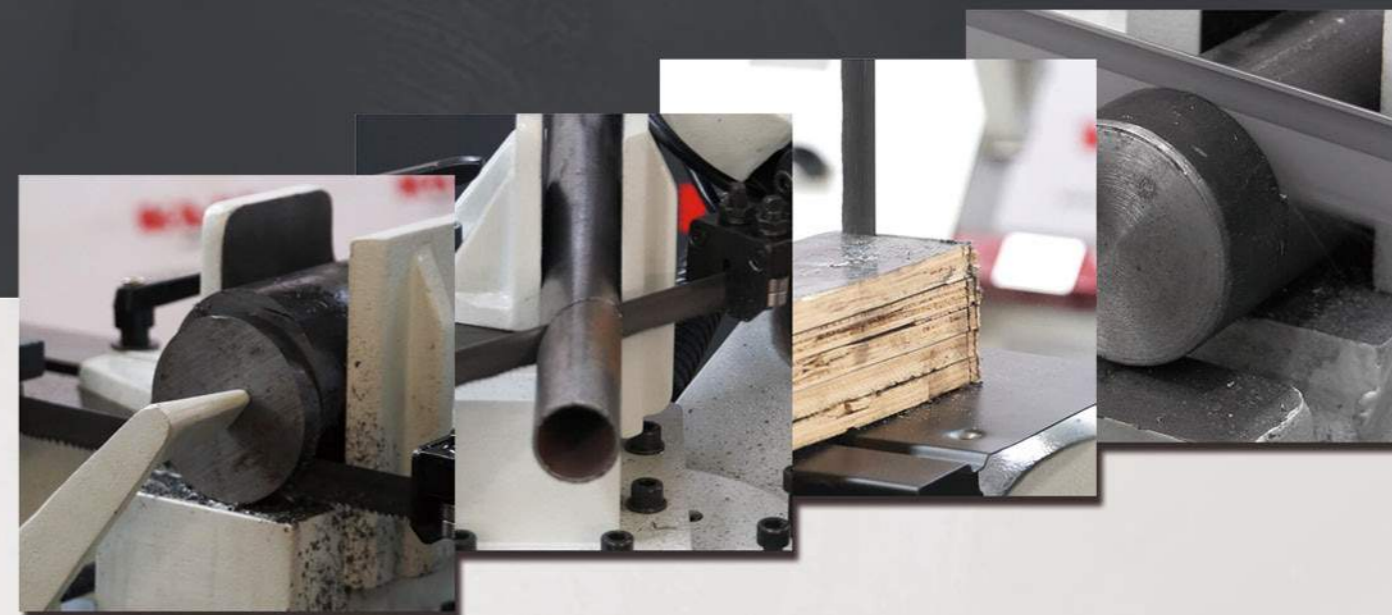


Video



Order online kakaindustrial.com

Stock No.	188006			
Model	BS-712N			
Capacity	Circular	@90°	7"	178 mm
	Rectangular	@90°	7"x12"	178x305 mm
	Circular	@45°	5"	127 mm
	Rectangular	@45°	4.75"x4.88"	120x125 mm
Blade speed	@60Hz		27,41,59,78 MPM	
Blade size			0.75"x0.04"x93"	19x0.9x2362 mm
Motor power	1.1KW 1.5HP(1PH)			
Drive	V-belt			
Packing size	50x20x45 in.		125x51x115 cm	
N.W/G.W	319/392 lbs		145/178 kg	



- ACCURACY • SAFETY • MOVABLE • **MULTI-FUNCTION** • HIGH DURABILITY

The bandsaw has four cutting speeds and the quick clamps can be rotated from zero to forty-five degree.

With a capacity of 7 x 12 inches, kaka industrial metal cutting bandsaw can handle materials from aluminum to steel.

Material



Steel

Copper

Aluminum

Wood

Shape



Rectangular

Circular

Tube

Special

METAL CUTTING BAND SAW

BS-85

- Easy to carry to any work sites
- Angle cutting from 0°-45°
- With electronic variable speed



7" METAL CUTTING BAND SAW

BS-712R

- Adjustable hydraulic control cutting feed for different materials
- Built-in coolant system
- Automatic shut off when cutting done
- Dual miter cutting to 45° via swiveling head and sliding vice
- 4 step blade speed by pulley wheel driven
- Adjustable roller guide and steel wire brush to prolong the blade service life
- Fast action material clamping lever



Video

9" METAL CUTTING BAND SAW

BS-912B



Video



Video

10" METAL CUTTING BAND SAW

BS-1018B

- The horizontal and vertical metal cutting band saw's working position also ensures the adjustability.
- For more convenience, this metal cutting band saw features adjustable roller blade guides and an adjustable material stop to accommodate different materials.
- The feature of flexibility in a large extent to make it more precise since you can adjust the angle to the optimum condition

Stock No.	188000		188008		188010		188015			
Model	BS-85		BS-712R		BS-912B		BS-1018B			
Capacity	Circular	@90°	3.35"	85 mm	7"	178 mm	9"	229 mm	10"	254 mm
	Rectangular	@90°	3.35"x4.13"	85x105 mm	7"x8.27"	178x210 mm	7"x12"	178x305 mm	5"x18"	127x457 mm
	Circular	@45°	2.76"	70 mm	5"	127 mm	5.9"	150 mm	5.9"	150 mm
	Rectangular	@45°	2.56"x2.95"	65x75 mm	3.35"x5.51"	85x140 mm	5"x5.9"	127x150 mm	5.9"x7.48"	150x190 mm
Blade speed	@60Hz	40-88 MPM		22, 34, 49, 64 MPM		26, 50, 73, 95 MPM		29, 50, 73, 95 MPM		
Blade size	0.51"x0.026"x52.17"		0.75"x0.035"x93"		1.06"x0.035"x104.53"		1.06"x0.035"x129.13"			
	13x0.65x1325 mm		19x0.9x2362 mm		27x0.9x2655 mm		27x0.9x3280 mm			
Motor power	1 kW (1PH)		1.1kW (1PH)		1.1kW (1PH)		1.5kW (1PH)			
Drive	Gear		V-belt		V-belt		V-belt			
Packing size	28"x15"x18"	72x37x46 cm	51"x28"x48"	129x72x120 cm	61"x23"x46"	154x58x117 cm	72"x34"x46"	182x86x116 cm		
N.W/G.W	42/47 lbs	19/21 kg	407/539 lbs	185/245 kg	418/555 lbs	190/252 kg	684/865 lbs	310/392 kg		

STAND FOR BAND SAW



RV-1100



RB-1100



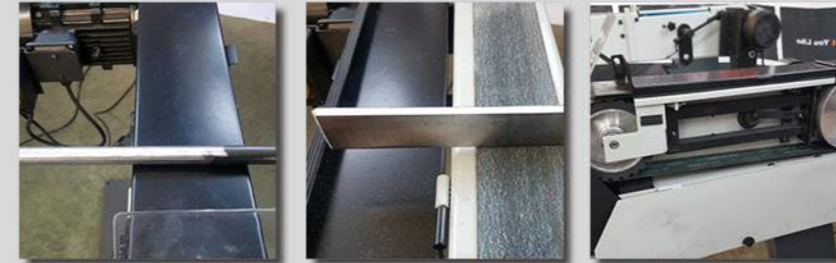
RB-1100



RB-365



BELT GRINDER



Stock No.	189001	
Model	BG-3	
Motor Power	3 kW (3PH)	
Driven wheel	Φ 7.87"x2.95"	Φ 200x75 mm
Contact Wheel	Φ 7.87"x2.95"	Φ 200x75 mm
Belt Size	78.7"x2.95"	2000x75 mm
Belt Speed	112 ft/sec.	34 m/sec.
Packing Size	46"x22"x22"	115x56x56 cm
N.W./G.W.	187/243 lbs	85/110 kg



Video

BELT GRINDER **BG-3**

BELT GRINDER

- BG-2
- BG-2B
- BG-3
- BG-4
- BG-9
- BTM-250
- BG-3L
- BG-6L
- PRS-4A

- Our belt grinder features high efficiency and precision, less dust and low noise.
- The abrasive band is convenient for replacement and adjustment.
- The angle of belt grinder head can be adjusted up and down.
- Our belt grinder is equipped with a vibration-proof protective device and has an optional vacuum cleaner.



**BELT/DISK SANDER
BG-2**

- A combination of belt grinder and disk sander
- Smart dimensions and easy to carry



**BELT/DISK SANDER
BG-2B**

- A compact machine with a great working potential
- Grinds, clears brushes and removes the edges of different types of pieces



**LIGHT DUTY BELT GRINDER
BG-3L**



**LIGHT DUTY BELT GRINDER
BG-4**

- Quick-adjusting belt angle
- Vibration-free operation
- High belt speed
- Large face sanding area



**BELT GRINDER
BG-6**

- Quick-adjusting belt angle
- Vibration-free operation
- High belt speed
- Large face sanding area



**LIGHT DUTY BELT GRINDER
BG-6L**



**BELT GRINDER
BG-9**

- A combination of radius grinder and surface sander
- Adjustable working position



Video



Order online kakaindustrial.com

Belt Grinder

189014	BG-2B	0.75 kW	-	-	Φ 3.94"x2.95"	Φ 100x75 mm	68.9"x2.95"	1750x75 mm	43 ft/sec.	13 m/sec.	31"x20"x23"	80x50x58 cm	110/143 lbs	50/65 kg
189024	BG-6L	3 kW (3PH)	Φ 7.87"x5.9"	Φ 200x150 mm	Φ 7.87"x5.9"	Φ 200x150 mm	78.7"x5.9"	2000x150 mm	95 ft/sec.	29 m/sec.	48"x30"x28"	122x77x72 cm	203/275 lbs	92/125 kg
189023	BG-3L	3 kW (3PH)	Φ 7.87"x2.95"	Φ 200x75 mm	Φ 7.87"x2.95"	Φ 200x75 mm	78.7"x2.95"	2000x75 mm	95 ft/sec.	29 m/sec.	46"x23"x28"	115x57x70 cm	159/209 lbs	72/95 kg
189022	BG-9	3 kW (3PH)	Φ 7.87"x8.66"	Φ 200x220 mm	Φ 7.87"x8.66"	Φ 200x220 mm	78.7"x8.66"	2000x220 mm	95 ft/sec.	29 m/sec.	48"x30"x28"	122x77x72 cm	260/363 lbs	118/165 kg
189002	BG-6	2.2/2.8 kW (3PH)	Φ 9.84"x5.9"	Φ 250x150 mm	Φ 9.84"x5.9"	Φ 250x150 mm	78.7"x5.9"	2000x150 mm	59/122 ft/sec.	18/37 m/sec.	45"x25"x27"	114x63x67 cm	242/304 lbs	110/138 kg
189021	BG-4	1.5 kW (1PH)	Φ 5.12"x3.94"	Φ 130x100 mm	Φ 5.12"x3.94"	Φ 130x100 mm	48"x3.94"	1220x100 mm	63 ft/sec.	19 m/sec.	41"x22"x24"	105x57x60 cm	99/141 lbs	45/64 kg
Stock No.														
Model														
Motor Power														
Driven wheel														
Contact Wheel														
Belt Size														
Belt Speed														
Packing Size														
N.W./G.W.														



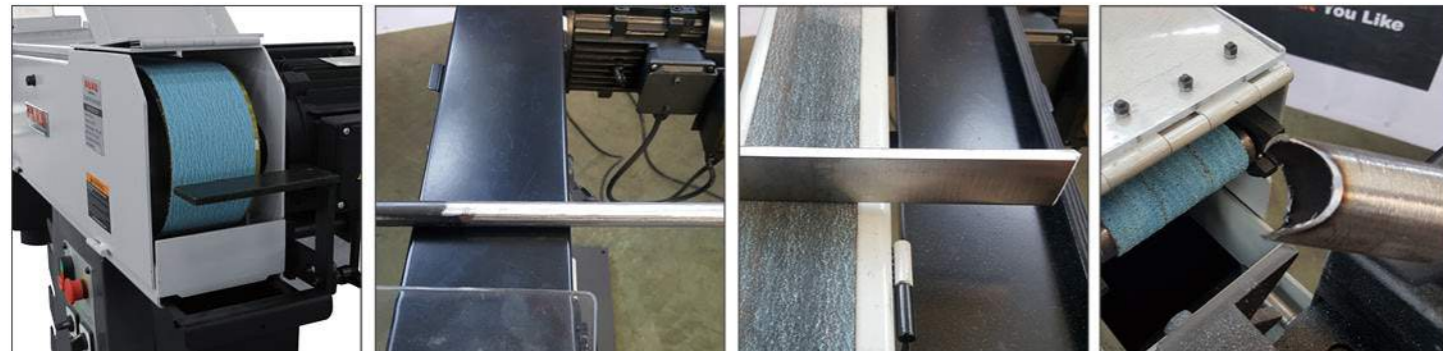
Video



TUBE AND PROFILE END GRINDER **PRS-4A**

- Steady Tri-angle stand with 8 sets roller holder
- 2 Optional speeds fulfill different requirements
- Standard roller: Φ 30 mm

Stock No.	189013
Model	PRS-4A
Moter Power	2.2/2.8 kW (3PH)
Adjustable Slide	200x75 mm
Belt Size	100x2000 mm
Belt Speed	15 m/sec. 30 m/sec.
Grinding ares	30° to 90°
Packing Size	137x61x68 cm
N.W./G.W.	160/190 kg



Order online kakaindustrial.com



BELT/DISK SANDER **BTM-250**

- Support table for disk and belt grinding
- Easy belt change with quick-lock
- Belt sander can be based horizontally and vertically
- Dust collection plates for belt and disk grinder
- Optional exhaust connector

Stock No.	189007	
Model	BTM-250	
Belt dimension	5.9"x48"	150x1200 mm
Belt speed	28 ft/sec.	8.4 m/sec.
Table dimension	5.9"x10.5"	152x267 mm
Angular table adjustment	45°	
Disk diameter	9.8"	250 mm
Table dimension	7.4"x12.9"	190x330 mm
Disk speed	2100 rpm	
Chamfer angle	15°	
Motor power	1.1 kW	
Packing size	31"x20"x44.8"	79x51x114 cm
N.W./G.W.	198/264 lbs	90/120 kg



Video

1. Adjustable speed

1	130	420	535	1745
2	260	840	1070	3200

8 steps spindle speeds

- Motor speed select switch
- Gear speed shift handles
- Gear speeds schematic



VERTICAL DRILLING MACHINE

- GD-25 • GD-25B • DP-32 • DP-40

VERTICAL DRILLING **GD-25**



Feed scale



Head lift

VERTICAL DRILLING **GD-25B**

- Height adjustable and rotary function on head unit.
- Those function can provide proper drilling travel for various workpieces in different sizes.



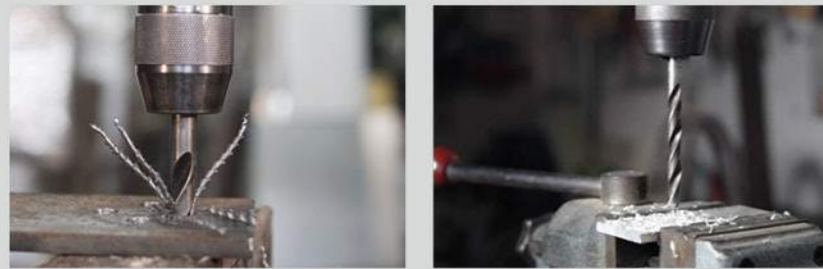
Capacity

Drilling: 1.26"/32 mm	Drilling: 1.57"/40 mm
Tapping: 0.75"/19 mm	Tapping: 0.98"/25 mm

VERTICAL DRILLING **DP-32**

VERTICAL DRILLING **DP-40**

Drilling in Metal



- With variable speed.
- Driven by gear with high torque.
- Large capacity for drilling and tapping
- Casting iron structure for long durability
- Coolant as standard
- Safety guard with Micro switch
- With mechanical automatic feed



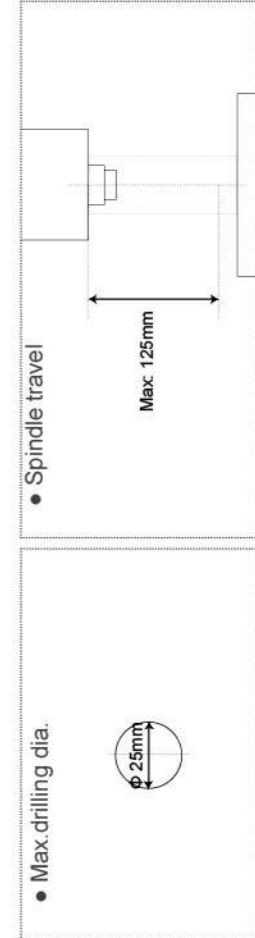
Order online kakaindustrial.com

VERTICAL DRILLING DP-32 & DP-40

Stock No.	Model	Max. drilling capacity	Max. tapping capacity	Swing	Spindle taper	Spindle travel	Spindle speed	Spindle nose to table	Spindle nose to base	Quill diameter	Column diameter	Motor power	Table size	Table slot	Base size	Machine size	Packing size	N.W./G.W.
190031	DP-40	40 mm	25 mm	530 mm	MT4	150 mm	245-2000 rpm 65-540 rpm	605 mm	1150 mm	75 mm	115 mm	2.2 kW	22"x18.7"	0.62"	688x486 mm	96x65x229 cm	832/979 lbs	378/445 kg
190030	DP-32	32 mm	19 mm	530 mm	MT3	150 mm	245-2000 rpm 65-540 rpm	530 mm	1180 mm	75 mm	115 mm	2.2 kW	22"x18.7"	0.62"	688x486 mm	95x64x200 cm	742/876 lbs	337/398 kg

VERTICAL DRILLING GD-25 & GD-25B

Stock No.	Model	Max. drilling dia.	Spindle travel	Tapping capacity	Morse taper	Motor power	Spindle speeds at 60 Hz	Packing size	N.W./G.W.
190017	GD-25	25 mm	125 mm	M10 / M16	MT3	0.65 kW / 0.9 kW (3PH)	130-260-420-840-535-1070-1745-3200	167x56x75 cm	202/267 kg
190018	GD-25B	25 mm	125 mm	M10 / M16	MT3	0.65 kW / 0.9 kW (3PH)	130-260-420-840-535-1070-1745-3200	94x48x75 cm	136/167 kg



- Geared head drilling with Max. 0.98" / 25mm capacity
- Double speed motor with forward & reverse switch
- Adjustable height drilling head suitable for different height workpieces
- T-slotted work table rotates 360° for GD-25
- T-slotted base can be used to fix column shape workpieces
- Drill ejector lever



DEBURRING CUTTER

This production is used for the final procedure-
deburring in the machining, which can be used
in any shape such as convexity, rotundity,
squareness, oblateness, various groove, linearity,
curvilinear. circular hole, flat hole, branch hole
where are easy to produce deburring.

Mechanical manufacturing industry: mechanical
processing, automobile manufacturing,
shipbuilding, Stamping, moulding, welding,
repairing, etc.

Plastic manufacturing industry: injection
moulding, plastic sucking, plastic steel doors
and windows, lettering machining, productions,
glassware and ceramics.

Manufacturing industry: iron casting, steel
casting, die casting, casting, etc.

Wood products manufacturing industry:
furniture manufacturing, various wood products
manufacturing and repairing

Various ordinary steel, stainless steel, cast iron,
cast steel, etc.

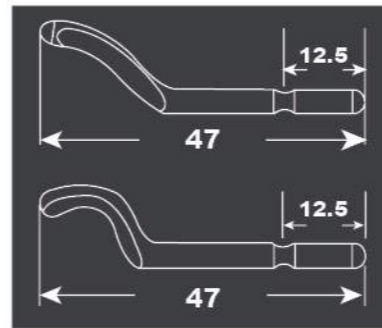
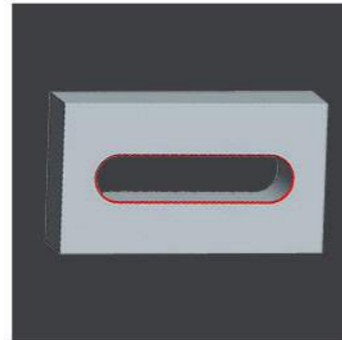
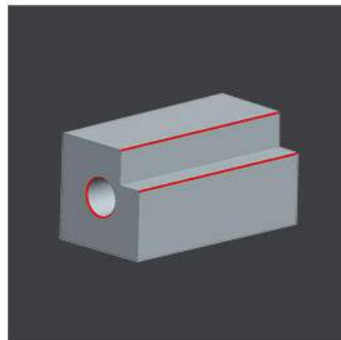
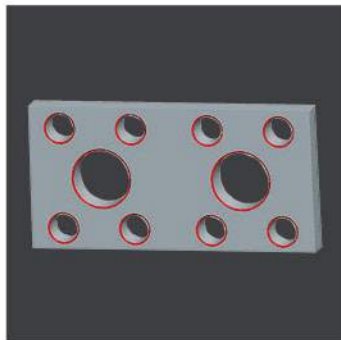
All kinds of aluminous material, zinc, lead, etc.
Nonferrous metals Black metal.

All kinds of plastic products : plastic steel doors
and windows, organic glass, plastic tube, sheet
metal, etc.

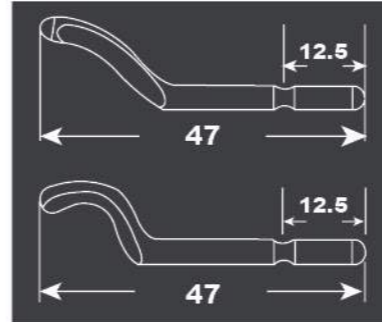
All kinds of woodwork

Glass products and ceramic

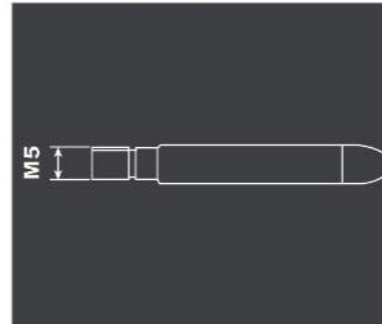
Quality guarantee of the production:



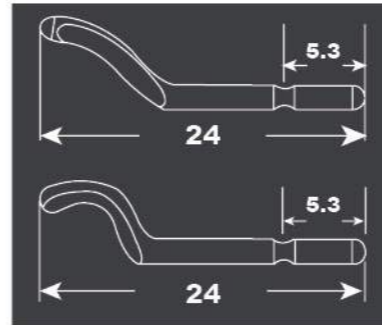
HEAVY-DUTY UNIVERSAL DEBURRING CUTTER
780-17PC



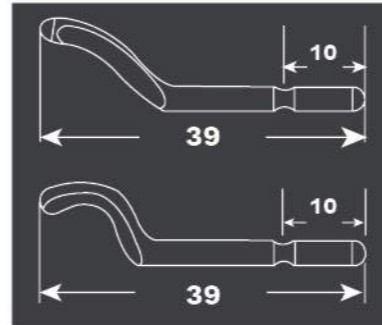
HEAVY-DUTY UNIVERSAL DEBURRING CUTTER
680-12PC



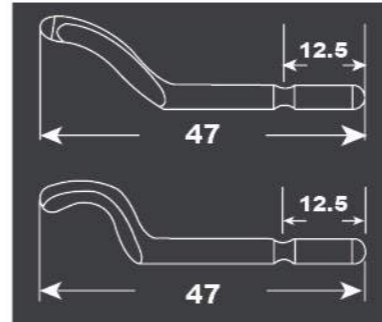
HEAVY-DUTY UNIVERSAL DEBURRING CUTTER
480-0301



HEAVY-DUTY UNIVERSAL DEBURRING CUTTER
480-0100



HEAVY-DUTY UNIVERSAL DEBURRING CUTTER
480-0012



HEAVY-DUTY UNIVERSAL DEBURRING CUTTER
480-0009





KAKA
metal-working machinery
Make what you like



SHEARING

- Hand Lever Shear
- Manual Bar Shear
- Tube / Pipe Notcher
- Foot Shear
- Throatless Shear
- Electric Shear
- 90° Angle Notcher
- Guillotine Shear
- Hydraulic Shear



HAND LEVER SHEAR
HS-5(6/8/10/12)

HAND LEVER SHEAR
HSG-8

- Level arm with compensating spring
- Easy cutting across the entire length
- Rigid cutter body



Video

Stock No.	172101	172102	172103	172104	172105	172303							
Model	HS-5		HS-6		HS-8		HS-10		HS-12		HSG-8		
Blade length	5"	127 mm	6"	152 mm	8"	203 mm	10"	254 mm	12"	305 mm	8"	203 mm	
Capacity (Mild steel)	Plate steel	0.24"	6 mm	0.24"	6 mm	0.24"	6 mm	0.24"	6 mm	0.24"	6 mm	0.24"	6 mm
	Flat steel	2.76"x0.24"	70x6 mm	2.76"x0.24"	70x6 mm	2.76"x0.24"	70x6 mm	2.76"x0.24"	70x6 mm	2.76"x0.24"	70x6 mm	2.76"x0.24"	70x6 mm
	Round steel	0.43"	11 mm	0.43"	11 mm	0.51"	13 mm	0.51"	13 mm	0.51"	13 mm	0.51"	13 mm
Packing size	16"x15"x6"		16"x15"x6"		16"x16"x6"		21"x19"x6"		21"x19"x6"		20"x6"x18"		
	40x37x15 cm		40x37x15 cm		42x41x16 cm		54x47x15 cm		54x47x15 cm		50x15x45 cm		
N.W/G.W.	20/22 lbs	9/10 kg	22/24 lbs	10/11 kg	37/40 lbs	17/18 kg	46/51 lbs	21/23 kg	57/62 lbs	26/28 kg	42/44 lbs	19/20 kg	



Video

52" FOOT SHEAR Q01-5216

- With both front & back gauge
- With heavier weight, good stability
- High carbon and chrome steel blade
- A fully casting structure
- Used for mild steel, aluminium copper, brass, zinc, plastic and leads



52" FOOT SHEAR Q01-5216B

- Quality steel-fabrication construction
- Spring loaded material clamp beam
- Light duty and cost effective
- Adjustable blade gap clearance for thin material
- Includes front sheet supports and backgauge

Stock No.	172002		172015		172016	
Model	Q01-5216		Q01-5216B		Q01-9818B	
Width	52"	1320 mm	52"	1320 mm	98"	2500 mm
Max. shearing thickness	16 Ga.	1.6 mm	16 Ga.	1.6 mm	18 Ga.	1.2 mm
Back gauge range	0-27.5"	0-700 mm	31.5"	800 mm	31.5"	800 mm
Packing size	66x30x45 in.	168x76x115 cm	71x24x47 in.	182x70x134 cm	107x29x54 in.	270x73x135 cm
N.W/G.W.	999/1119 lbs	454/508 kg	902/1254 lbs	400/490 kg	1540/1870 lbs	700/850 kg



Order online kakaindustrial.com



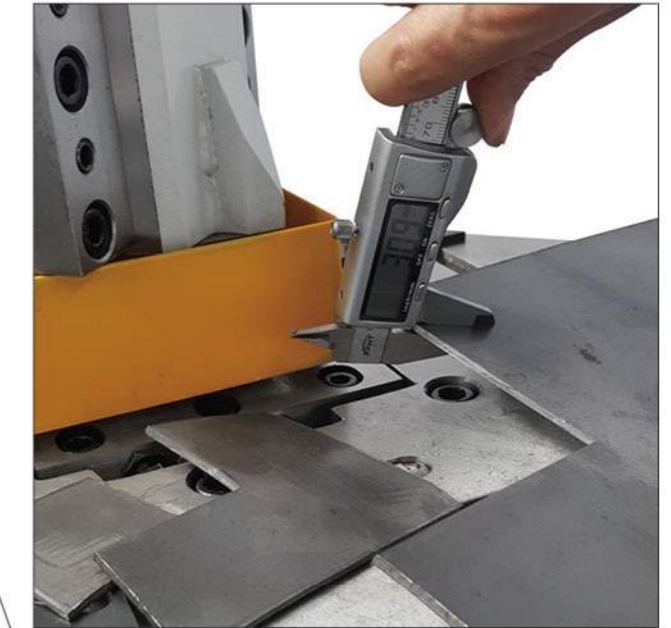
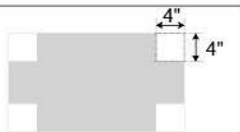
Video

Capacity

• Thickness

0.12" ↓

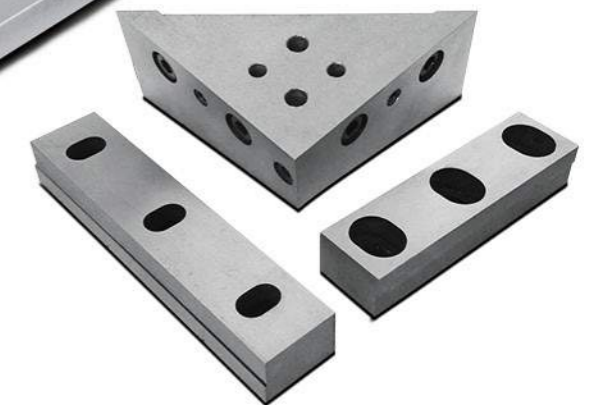
• Punches



Stock No.	172403	
Model	HN-1104	
Thickness	0.12"	3 mm
Punches	4"x4"	100x100 mm
Ram stroke	1.2"	30 mm
Packing size	18"x18"x30"	44x42x78 cm
N.W/G.W.	198/231 lbs	90/105 kg

90° ANGLE NOTCHER HN-1104

- Rigid steel frame
- Adjustable precision guide plates,
- Fine reading scales



RIGID CUTTER for HN-1104



Video

MANUAL BAR SHEAR **PBS-9**

- Double functions for cutting & punching
- Rigid cutter for sheet metals, flat steel and round/square/angular steel
- Round deep-hole, square or similar stamps
- A good choice for sheet-metal users
- Optional 9 round punches and dies: 1/8", 3/16", 1/4", 5/16", 3/8", 7/16", 1/2", 9/16", 5/8"



Stock No.	172304	
Model	PBS-9	
Max.punching capacity	0.31"	8.0 mm
Throat depth	6.3"	160 mm
Standard die	0.63"	16 mm

Stock No.	172304	
Model	PBS-9	
Capacity (mild steel)	Round steel	0.87" 22 mm
	Square steel	0.79" 20 mm
	Flat steel	3.54"x0.55" 90x14 mm
	Angle steel	2.36"x0.28" 60x7 mm
	T-steel	2.36"x0.28" 60x7 mm
	Plate steel	0.39" 10 mm
Body packing size	44"x15"x37"	110x36x92 cm
Handle packing size	48"x7"x5"	120x16x12 cm
N.W./G.W.	286/348 lbs	130/158 kg



- Flat punching
- Square bar shear
- Right angle notcher
- Angle bending
- Round bar shear
- Press brake
- Flat bar shear
- Punching
- Pipe notching
- Slot notcher



STANDARD TOOLING

1. Punch dies 15/16" (φ 22)
2. Flat steel shear
3. Angle steel shear



OPTIONAL TOOLING

1. 55ton-2000
 - punch dies 7 sets:
 - Inch: 1-1/16", 13/16", 11/16", 9/16", 7/16", 5/16", 3/16"
 - Metric (mm): φ25, 20, 18, 14, 10, 8, 5
2. 55ton-4000
 - Right angle notcher
3. 55ton-3000
 - Puch heterotypic hole
4. 55ton-6000
 - Brake die
5. 55ton-8000
 - Slot die
6. 55ton-9000
 - Pipe notcher, includes 3/4", 1", 1-1/4", 1-1/2", 2"
7. 55ton-9100
 - Round pipe shearing die
8. 55ton-5000
 - Angle steel: 2"x2"
 - Square: 3/4"x3/4"
 - Round (O.D): φ3/4", φ5/8", φ3/8", φ1/2", φ1/4"
 - Flat steel: width 6"x5/16"
9. 55ton-9200
 - Gauging table kit and fabricators protector



HYDRAULIC IRONWORKER **M-55**

- Ironworker is used for Punh, Shear, Notch and Brake mild steel plate, bar-stock and angle.
- A wide range of accessories are available to fabricate rod, square stock, sheet metal and pipe

Stock No.	381111	
Model	M-55	
Punching	Max.capacity	1-1/16" dia.in 5/8"plate
	Max.width	1/2"x12" or 3/8"x14"
Flat bar shearing	Max.thickness	3/4"x4"
	Max.size	4"x4"x1/4" or 3"x3"x3/8"
Rated capacity	55 Ton	
Throat depth	7-1/2"	
Open height	8"	
Shut height	6-3/4"	
Stroke	1-1/4"	
Motor power	3.75 kW (5HP)	
Packing size	46"x45"x60"	115x113x152 cm
	N.W./G.W.	2332/2552 lbs

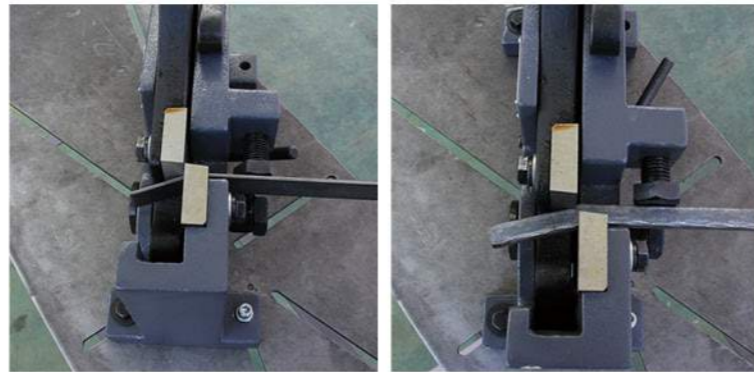


MANUAL BAR SHEAR
MS-20/24/28/32

- Bolt to bench or table top.
- Blade can be easily replaced.
- Best for cutting metal plate, rod steel, flat steel.
- Durable steel frame cutter includes hardened high carbon steel blade.



RIGID CUTTER for MS-20/24/28/32



Stock No.	172201		172202		172203		172204		
Model	MS-20		MS-24		MS-28		MS-32		
Capacity (Mild steel)	Round steel	0.79"	20 mm	0.95"	24 mm	1.1"	28 mm	1.26"	32 mm
	Flat steel	1.1"x0.3"	30x8 mm	1.3"x0.4"	35x12 mm	1.5"x0.4"	40x12 mm	1.5"x0.5"	40x14 mm
	Square steel	0.71"x0.71"	18x18 mm	0.79"x0.79"	20x20 mm	0.95"x0.95"	24x24 mm	1.1"x1.1"	28x28 mm
Packing size	17"x15"x8"	41x37x20 cm	17"x15"x9"	41x37x20 cm	18"x10"x18"	44x24x45 cm	20"x10"x19"	44x24x45 cm	
N.W/G.W.	35/37 lbs	16/17 kg	55/60 lbs	25/27 kg	75/86 lbs	34/39 kg	101/115 lbs	46/50 kg	



Order online kakaindustrial.com



THROATLESS SHEAR
MMS-2

THROATLESS SHEAR
MMS-1



THROATLESS SHEAR
MMS-3

THROATLESS SHEAR
MMS-4

Stock No.	172503		172501		172502		172504	
Model	MMS-1		MMS-2		MMS-3		MMS-4	
Max shearing thickness	22 Ga.	1.5 mm	20 Ga.	2.0 mm	16 Ga.	3.0 mm	20 Ga.	2.0 mm
Packing size	13"x4"x5"	32x10x13 cm	8"x7"x10"	19x18x24 cm	13"x10"x14"	32x24x34 cm	20"x13"x9"	51x33x22 cm
N.W/G.W.	3/4 lbs	1.5/2 kg	17/20 lbs	8/9 kg	46/48 lbs	21/22 kg	16/17 lbs	7/8 kg

GUILLOTINE SHEAR HS-20/30/40

- Hand control and simple operation
- Specially used for thin plates
- Suitable for metal plate and plastic plate
- Maximum shearing thickness :
1.5 mm / 16 Ga. mild steel



Video



Stock No.	172107		172108		172109	
Model	HS-20		HS-30		HS-40	
Bed Width	20"	500 mm	31"	800 mm	39"	1000 mm
Max. shearing thickness	16 Ga.	1.5 mm	16 Ga.	1.5 mm	16 Ga.	1.5 mm
Packing size	31"x11"x17"		45"x11"x22"		55"x11"x22"	
N.W./G.W.	79/82 lbs		101/132 lbs		125/165 lbs	



Order online kakaindustrial.com

TUBE / PIPE NOTCHER

PN-1/2A PN-1/2S



- Sturdy and durable steel frame holds your work-pieces rigid during operation
- Base is adaptable to any worktable and is especially suitable to be mounted on drill presses.

Stock No.	176201		176202	
Model	PN-1/2A		PN-1/2S	
Tubing capacity	2"	51 mm	2"	50 mm
Spindle	0.75"	19 mm	0.75"	19 mm
Spindle adapter	0.5" to 0.625"	13 to 15 mm	0.5" to 0.625"	13 to 15 mm
Angle adjustment	0-45°		0-45°	
N.W./G.W.	6/7 lbs	2/3 kg	10/11 lbs	4/5 kg
Packing size	12"x7"x5"	30x18x14 cm	12"x7"x8"	30x18x20 cm

TUBE / PIPE NOTCHER

RA-1

1/4", 3/8", 1/2"



Video



TUBE / PIPE NOTCHER

RA-2

3/4", 1", 1-1/4"



TUBE / PIPE NOTCHER

RA-3

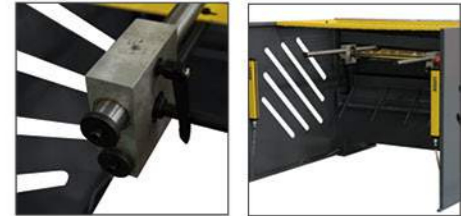
1-1/2", 2"



Stock No.	Model	Capacity	Packing size	N.W./G.W.			
176203	RA-1	1/4", 3/8", 1/2"	8, 10, 15 mm	21"x8"x7"	50x18x16 cm	13/15 lbs	6.5/7.5 kg
176204	RA-2	3/4", 1", 1-1/4"	20, 25, 32 mm	21"x8"x7"	50x18x16 cm	18/20 lbs	8/9 kg
176205	RA-3	1-1/2", 2"	40, 50 mm	21"x8"x7"	50x18x16 cm	33/35 lbs	15/16 kg
176212	RA-4	1-3/4", 2"	45, 50 mm	20"x8"x7"	51x19x17 cm	38/39 lbs	17/17.5 kg
176213	RA-5	1", 1-1/4", 1-1/2"	25, 25, 40 mm	20"x8"x7"	51x19x17 cm	19/20 lbs	8.5/9 kg
176214	RA-6	7/8", 1", 1-1/4"	22, 25, 30 mm	20"x8"x7"	51x19x17 cm	19/20 lbs	8.5/9 kg
176215	RA-7	1", 1-1/4", 1-1/2"	25, 32, 40 mm	20"x8"x7"	51x19x17 cm	23/25 lbs	10.5/12 kg
176216	RA-8	7/8", 1-1/4", 1-3/8"	22, 30, 35 mm	20"x8"x7"	51x19x17 cm	19/20 lbs	8.5/9 kg
176217	RA-9	1", 1-1/4", 1-3/8"	25, 32, 35 mm	20"x8"x7"	51x19x17 cm	19/20 lbs	8.5/9 kg



**ELECTRIC SHEARING MACHINE
Q11-4811A**



- Manual back gauge with measuring 0-635mm, motorized back gauge can be optional
- Back safety system with light curtain is used to prevent access by persons in the process of cutting into the rear space of shears
- Sheet catcher by pneumatic cylinder
- Foot pedal with emergency stop
- Front sheet pallet for stacking



Video

Stock No.	186108	
Model	Q11-4811A	
Max. shearing thickness	11 Ga.	3.0 mm
Max. shearing width	49"	1250 mm
Shearing angle	2°	
No. of stroke	28 per/minute	
Motor power	4 kW (3 PH)	
Back gauge	25"	635 mm
Packing size	72x46x52 in.	184x117x133 cm
N.W/G.W.	1918/2150 lbs	870/975 kg



Order online kakaindustrial.com



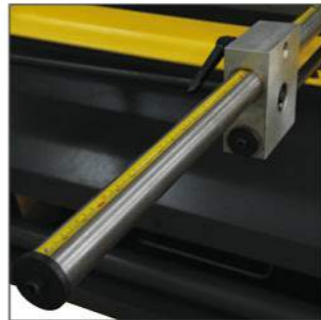
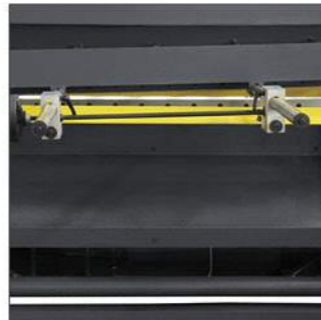
**HYDRAULIC SHEARING MACHINE
HQ01-5214B**

- Adjustable backgauge for precise repeatability
- Hydraulic control, light duty and cost effective
- Movable foot pedal control
- Front sheet supports and squaring guide



**HYDRAULIC SHEARING MACHINE
HQ01-9816B**

Stock No.	172017		172018	
Model	HQ01-5214B		HQ01-9816B	
Max. shearing thickness	14 Ga.	2 mm	16 Ga.	1.6 mm
Max. shearing width	52"	1320 mm	98"	2500 mm
Work table height	31.5"	800 mm	31.5"	800 mm
Motor power	1.5 kW (3PH)		2.2 kW (3PH)	
Back gauge	31.5"	800 mm	31.5"	800 mm
Packing size	78"x37"x18"	198x92x144 cm	124"x40"x59"	315x100x148 cm
N.W/G.W.	1320/1628 lbs	600/740 kg	2431/2849 lbs	1105/1295 kg



HYDRAULIC SHEARING MACHINE
THS-5212

- Mobile 24V foot pedal switch
- Front and back gauges is available to give fine adjustment
- With high chromium blades, two sides shearing provides twice the cutting life
- The steel-welded hydraulic shearing machines are ideals equipment for precision shearing of mild steel



BRAKE

- Hand Brake
- Folding Machine
- Magnetic Bending Machine
- Combination Shear Brake & Roll
- Pan & Box Brake
- Mini Bender
- Vice brake die set

Stock No.	186230	186231	186234	186235
Model	THS-5212	THS-5208	THS-1008	THS-1208
Max. shearing thickness	12 Ga. 2.5 mm	8 Ga. 4 mm	8 Ga. 4 mm	8 Ga. 4 mm
Max. shearing width	52" 1320 mm	52" 1320 mm	100" 2540 mm	120" 3050 mm
Back gauge	25.5" 650 mm	25.5" 650 mm	25.5" 650 mm	25.5" 650 mm
Front gauge	23.5" 600 mm	23.5" 600 mm	23.5" 600 mm	23.5" 600 mm
No of stroke	20 per mintue	15 per mintue	13 per mintue	13 per mintue
Motor power	2.5 kW (1PH)	4 kW (3PH)	5.5 kW (3PH)	5.5 kW (3PH)
Packing size	68"x33"x51" 173x83x130 cm	79"x41"x62" 201x104x158 cm	128"x45"x67" 326x113x170 cm	149"x45"x67" 377x113x170 cm
N.W/G.W.	1408/1672 lbs 640/730 kg	2794/2992 lbs 1270/1360 kg	5750/6040 lbs 2590/2720 kg	6440/6780 lbs 2900/3050 kg



Order online kakaindustrial.com



Video

36" HAND BRAKE

- Includes floor stand
- Compact design
- Specially designed for light gauge sheet metal work



Video

48" HAND BRAKE W-4812N

12" HAND BRAKE

W-1220

24" HAND BRAKE

W-2420

36" HAND BRAKE

W-3620



80" HAND BRAKE W-8012

100" HAND BRAKE W-10012

Stock No.	173001		173002		173003		173136	
Model	W-1220		W-2420		W-3620		36" HAND BRAKE	
Capacity	Width	12" / 305 mm	24" / 610 mm	36" / 915 mm	36" / 915 mm			
	Thickness	20 Ga. / 1.0 mm	20 Ga. / 1.0 mm	20 Ga. / 1.0 mm	12 Ga. / 2.5 mm			
	Angle	0-135°		0-135°		0-135°		0-120°
Packing size	20"x12"x15"	50x30x36 cm	32"x12"x15"	81x30x36 cm	47"x14"x18"	117x35x44 cm	52"x10"x21"	123x24x52 cm
N.W/G.W.	42/44 lbs	19/20 kg	64/66 lbs	29/30 kg	143/172 lbs	65/78 kg	150/165 lbs	68/75 kg

Stock No.	173107		173127		173129	
Model	W-4812		W-8012A		W-10012A	
Capacity	Width	48" / 1220 mm	80" / 2040 mm	100" / 2540 mm		
	Thickness	12 Ga. / 2.5 mm	12 Ga. / 2.5 mm	12 Ga. / 2.5 mm		
	Angle	0-135°		0-135°		0-135°
Packing size	67"x30"x38"	171x75x96 cm	100"x30"x40"	253x76x102 cm	118"x30"x40"	300x76x100 cm
N.W/G.W.	1129/1265 lbs	513/575 kg	2332/2574 lbs	1060/1170 kg	2695/3014 lbs	1225/1370 kg



Order online kakaindustrial.com

☎ 470-282-5298 ✉ info@kakaindustrial.com



Video

3-IN-1/30

30" COMBINATION SHEAR, BRAKE & ROLL

- Removable male dies with female dies
- Back gauge standard
- With two position handles
- Shearing mild steel or equivalent
- Sectional fingers allow box and pan works
- Slip roll provided with forming grooves

WITH THREE FUNCTIONS

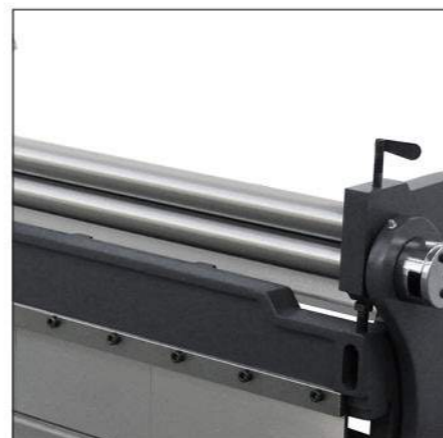
Smart 3-IN-1 machine is designed to cut, brake and roll at the same machine.



SHEAR



BRAKE



ROLL



Order online kakaindustrial.com

52" HEAVY DUTY SHEAR, BRAKE & ROLL

3-IN-1/52



8" COMBINATION SHEAR, BRAKE & ROLL

3-IN-1/8



12" COMBINATION SHEAR, BRAKE & ROLL

3-IN-1/112



Video

Stock No.	171000		171001		171003		171004		171008	
Model	3-IN-1/8		3-IN-1/12		3-IN-1/30		3-IN-1/40		3-IN-1/52	
Bed width	8"	200 mm	12"	305 mm	30"	760 mm	40"	1016 mm	52"	1320 mm
Max. shearing thickness	20 Ga	1.0 mm	20 Ga	1.0 mm	20 Ga	1.0 mm	20 Ga	1.0 mm	16 Ga	1.5 mm
Max. bending thickness	20 Ga	1.0 mm	20 Ga	1.0 mm	20 Ga	1.0 mm	20 Ga	1.0 mm	16 Ga	1.5 mm
Max. bending angle	90°		90°		90°		90°		90°	
Max. rolling thickness	20 Ga	1.0 mm	20 Ga	1.0 mm	20 Ga	1.0 mm	20 Ga	1.0 mm	16 Ga	1.5 mm
Min. rolling dia.	1.14"	29 mm	1.53"	39 mm	1.53"	39 mm	1.57"	40 mm	2.36"	60 mm
Packing size	14"x10"x12" 36x25x30 cm		20"x13"x16" 49x34x40 cm		39"x18"x29" 100x45x72 cm		53"x18"x29" 134x45x72 cm		71"x23"x37" 181x59x94 cm	
N.W/G.W.	37/42 lbs	17/18 kg	95/99 lbs	43/45 kg	300/315 lbs	136/143 kg	429/458 lbs	195/208 kg	1036/1168 lbs	471/531 kg

8" MINI SHEAR BRAKE

- Stock No. 171010
- Bend and shear with one compact tool, perfect for countless applications.
- Double-featured miniature machine will save your hours of tedious sheet metal fabrication and finishing.
- Use on copper and brass 20 Ga., aluminum 18 Ga.



Video

- Blade length: 8" / 200 mm
- Mounting base: 9"x5" / 230x125 mm
- Max. bending angle: 90°
- Packing size: 20"x13"x7" / 50x32x17 cm
- N.W./G.W.: 26/29 lbs / 12/13 kg



C-clamp is optional at extra charge

30" MINI BENDER W-3018



Video

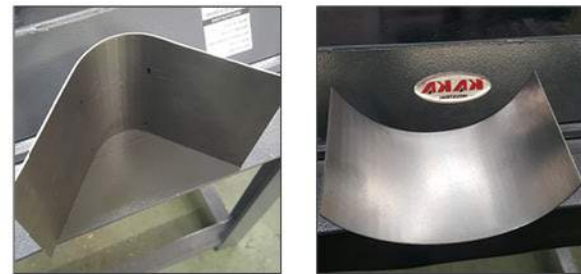


24" MINI BENDER W-2418

- Simple construction, and easy to move and operation
- Thickness capacity is up to 18 Ga.



Video



40" MINI BENDER W-4018

- Simple construction, and easy for moving and operation
- Thickness capacity is up to 18 Ga.



40" PAN & BOX BRAKE PBB-4012

- Built in spring make the bending light and easy
- With foot control. It is easy for operation and free hands
- A fully welded structure, and compact high quality engineering, ensure minimum maintenance, together with simple and safe operation



Video

Bending segments size: (units: mm)

25	30	35	40	45	50	75	100	150	200	270
0.98"	1.18"	1.38"	1.57"	1.77"	1.97"	2.95"	3.94"	5.91"	7.87"	10.63"



40" PAN & BOX BRAKE PBB-4014A



50" PAN & BOX BRAKE PBB-5014

Stock No.	173131		173132		173134		173135		
Model	W-1818		W-3018		W-2418		W-4018		
Capacity	Length	18"	460 mm	30"	760 mm	24"	610 mm	39"	1000 mm
	Thickness	18 Ga.	1.2 mm	18 Ga.	1.2 mm	18 Ga.	1.2 mm	18 Ga.	1.2 mm
	Angle	0-90°		0-90°		0-135°		0-135°	
Packing size	22"x5"x3"	55x12x7 cm	36"x7"x4"	90x17x10 cm	33"x9"x15"	83x21x37 cm	49"x11"x8"	125x27x30 cm	
N.W./G.W.	10/11 lbs	4.5/5 kg	29/31 lbs	13/14 kg	53/57 lbs	24/26 kg	73/77 lbs	36/45 kg	

Stock No.	173150		173151		173161		173162	
Model	PBB-4012		PBB-5014		PBB-4014A		PBB-5014A	
Max. working length	40"	1020 mm	50"	1270 mm	40"	1020 mm	50"	1270 mm
Max. sheet thickness	12 Ga.	2.5 mm	14 Ga.	2.0 mm	14 Ga.	2.0 mm	14 Ga.	2.0 mm
Max. clamping bar lift	1.9"	47 mm	1.9"	47 mm	1.9"	47 mm	1.9"	47 mm
Folding angle	0-135°		0-135°		0-135°		0-135°	
Packing size	58"x25"x52"	146x63x131 cm	77"x28"x51"	171x71x131 cm	58"x25"x52"	146x64x131 cm	68"x28"x52"	171x71x131
N.W./G.W.(lbs)	638/781 lbs	290/355 kg	748/924 lbs	340/420 kg	710/858 lbs	325/390 kg	814/990 lbs	370/450



Order online kakaindustrial.com

470-282-5298 info@kakaindustrial.com

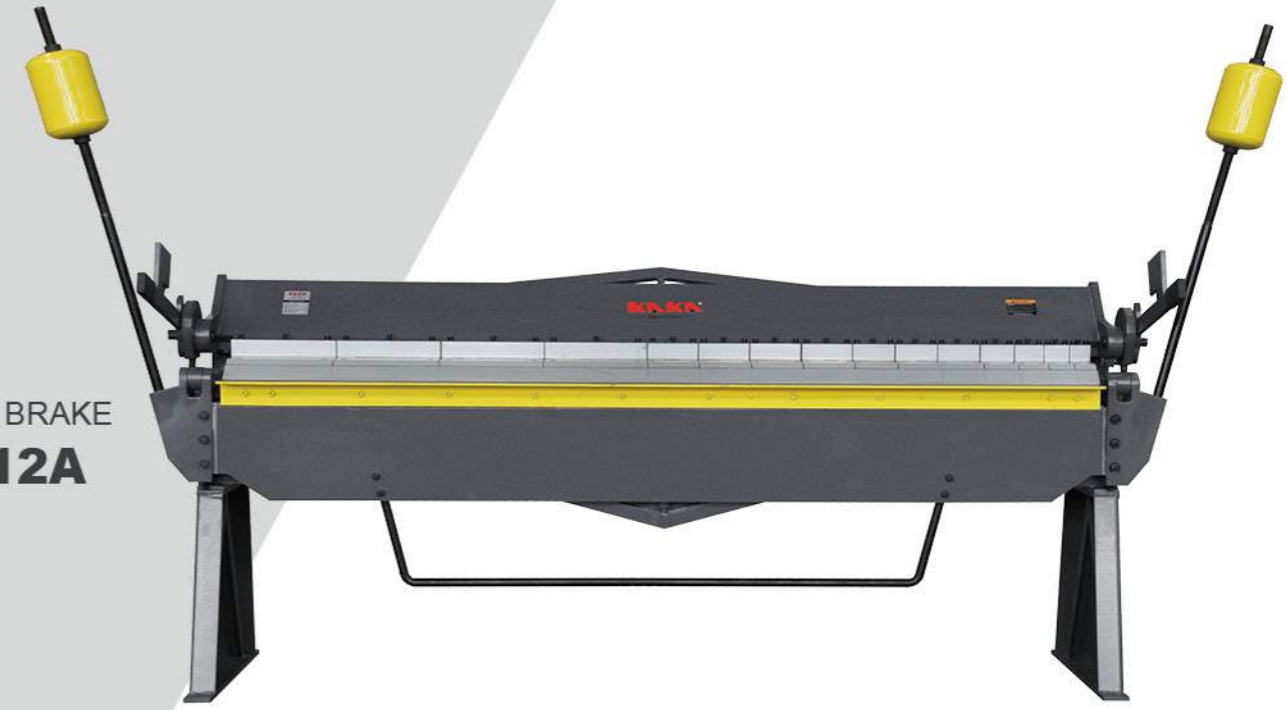


Video

PAN & BOX BRAKE
W-4812

- With segment bending blade for the bending of box section
- Various widths segment shiftable setup
- With balanced hammer, it can easy to operate and easy for folding

PAN & BOX BRAKE
W-10012A



Stock No.	173107		173127		173129	
Model	W-4812		W-8012A		W-10012A	
Capacity	Width	48" / 1220 mm	80" / 2040 mm	100" / 2540 mm		
	Thickness	12 Ga. / 2.5 mm	12 Ga. / 2.5 mm	12 Ga. / 2.5 mm		
	Angle	0-135°		0-135°		0-135°
Packing size	68"x30"x38"	171x75x94 cm	100"x30"x40"	253x76x102 cm	118"x30"x40"	300x76x100 cm
N.W/G.W.	1089/1265 lbs	495/575 kg	2332/2574 lbs	1060/1170 kg	2695/3014 lbs	1225/1370 kg

PAN & BOX BRAKE
W-8012A

- With segment bending blade for the bending of box section
- Various widths segment shiftable setup
- With balanced hammer, it can easy to operate and easy for folding



- **With high blades 7-1/4" / 184 mm**
- Sectioned fingers are easily removed for box bending and special forming operation
- With fingers installed it can be used as a full-length nose bar, turning the machine into a straight bending brake
- Balance weight hammer save your working effort



PAN & BOX BRAKE
BP-1650

Stock No.	173030	
Model	BP-1650	
Max. bending length	50" / 1270 mm	
Max. thickness	16 Ga. / 1.5 mm	
Max. box depth	3.94" / 100 mm	
Max. lift of beam	1.25" / 30 mm	
Beam adjustment	0.63" / 16 mm	
Finger nose angle	0-135°	
Packing size	66"x23"x33"	168x59x83 cm
N.W/G.W.	451/561 lbs	205/255 kg



Order online kakaindustrial.com

470-282-5298

info@kakaindustrial.com

12" PAN & BOX BRAKE
W-1220A



24" PAN & BOX BRAKE
W-2420A



36" PAN & BOX BRAKE
W-3620A



24" PAN & BOX BRAKE
W-2416Z



- Heavy duty type
- Solid machine with stainless steel
- Bending segment for high precision
- Many different sizes of bending segment for various work-pieces

36" PAN & BOX BRAKE
W-3616Z



48" PAN & BOX BRAKE
W-4816Z



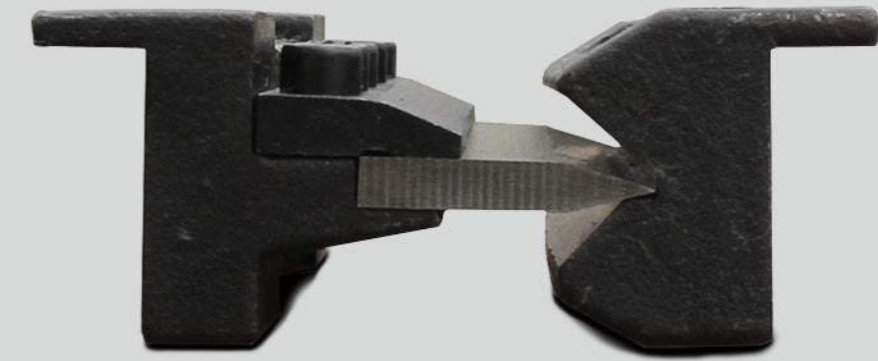
Stock No.	173101		173102		173103		173121		173122		173123		
Model	W-1220A		W-2420A		W-3620A		W-2416Z		W-3616Z		W-4816Z		
Capacity	Width	12"	305 mm	24"	610 mm	36"	915 mm	24"	610 mm	36"	915 mm	48"	1220 mm
	Thickness	20 Ga.	1.0 mm	20 Ga.	1.0 mm	20 Ga.	1.0 mm	16 Ga.	1.5 mm	16 Ga.	1.5 mm	16 Ga.	1.5 mm
Packing size	Angle	0-135°		0-135°		0-135°		0-135°		0-135°		0-135°	
		20"x14"x16"		32"x14"x17"		44"x14"x22"		34"x14"x22"		47"x16"x23"		62"x18"x26"	
N.W./G.W.		50x35x41 cm		82x35x44 cm		113x35x55 cm		85x37x56 cm		117x40x58 cm		158x45x65 cm	
		62/66 lbs		92/99 lbs		176/198 lbs		112/141 lbs		232/271 lbs		365/405 lbs	
		28/30 kg		42/45 kg		80/90 kg		51/64 kg		106/123 kg		166/184 kg	



Order online kakaindustrial.com



Video



BRAKE DIE SET-WITH MAGNETIC

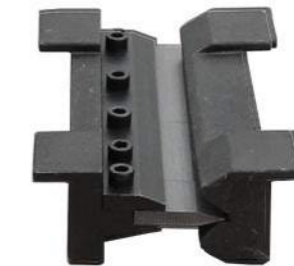
- It is the slickest and cheapest way to bend metal sheet.
- The press fingers are sectional and can be removed allowing small boxes to be made.



BDS-4



BDS-5



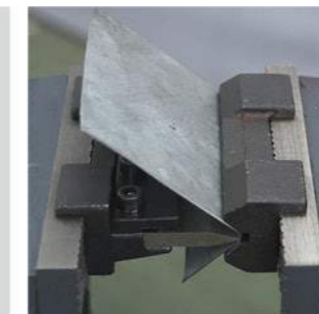
BDS-6



BDS-8

BRAKE DIE SET-WITH MAGNETIC

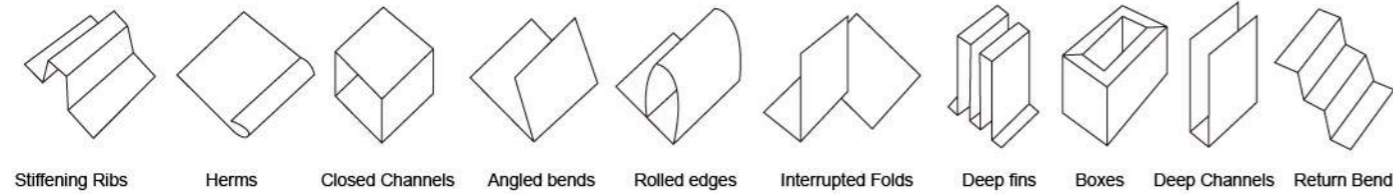
- To be used on the vice
- Easy operation



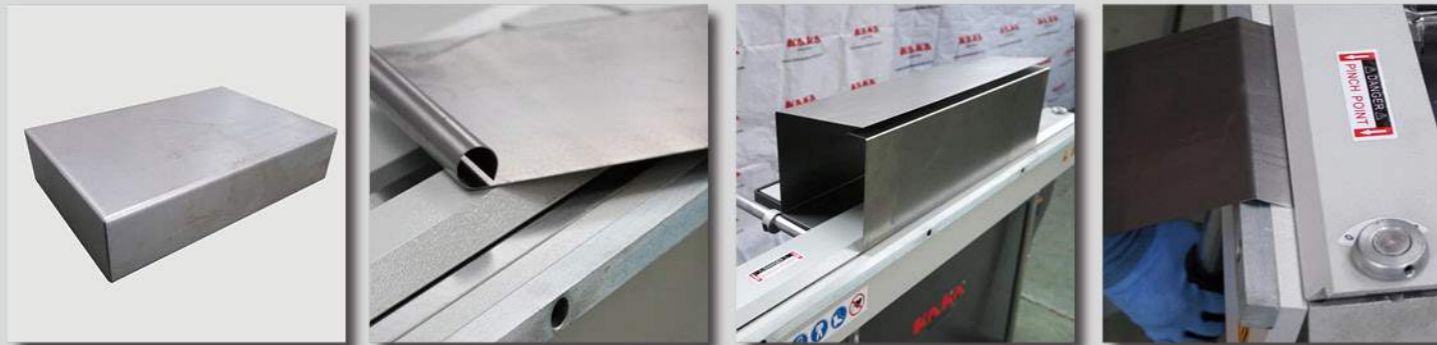
Stock No.	Model	Capacity				Packing size		N.W./G.W.	
		Width	Thickness	Capacity	Capacity	Width	Height	Weight	Weight
173209	BDS-4	4"	100 mm	14 Ga.	2 mm	6"x4"x3"	13x10x6 cm	2/3 lbs	1/1.5 kg
173210	BDS-5	5"	125 mm	14 Ga.	2 mm	6"x4"x3"	13x10x6 cm	3/4 lbs	1.5/2 kg
173211	BDS-6	6"	150 mm	14 Ga.	2 mm	6"x4"x3"	13x10x6 cm	4/5 lbs	2/2.5 kg
173212	BDS-8	8"	200 mm	14 Ga.	2 mm	6"x4"x3"	13x10x6 cm	6/6 lbs	2.5/3 kg

MAGNETIC BENDING MACHINE

EB-4816B

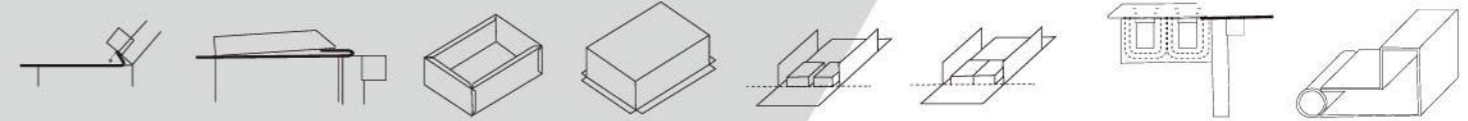


Video



- The machine consists of a long electromagnet with a steel clamp bar located above it.
- The sheet metal is clamped between the two by an electromagnet capable of clamping with a force range of between 3-10 tons.

Workpieces sample show



MAGNETIC BENDING MACHINE
EB-5216



MAGNETIC BENDING MACHINE
EB-6116

Stock No.	173409		173410		173411	
Model	EB-4816B		EB-5216		EB-6016	
Max. Capacity (length x thickness)	1250x1.5 mm		1320x1.5 mm		1550x1.5 mm	
	48"x16 Ga.		52"x16 Ga.		60"x16 Ga.	
Clamping force	6 Ton		6.5 Ton		8 Ton	
Duty cycle	30%		30%		30%	
Back-gauge	25.2"	640 mm	25.2"	640 mm	25.2"	640 mm
Foot switch	Standard		Standard		Standard	
Norminal current	6 Amp		6 Amp		6 Amp	
Power motor	2.2 kW (1PH)		2.2 kW (1PH)		2.5 kW (1PH)	
Protection	Thermal cut-out 70°C		Thermal cut-out 70°C		Thermal cut-out 70°C	
Bending-edge length	51.18"	1300 mm	53.94"	1370 mm	63.78"	1620 mm
Distance between lifters	49.61"	1260 mm	52.36"	1330 mm	61.81"	1570 mm
Packing size	57"x44"x15"	145x112x38 cm	60"x44"x15"	153x112x39 cm	69"x44"x15"	176x112x39 cm
N.W/G.W.	407/530 lbs	185/241 kg	405/506 lbs	182/230 kg	568/687 lbs	122/313 kg



Order online kakaindustrial.com

470-282-5298

info@kakaindustrial.com



12" SLIP ROLL
SJ300



Vise not included

12" SLIP ROLL
SJ320



Video

12" SLIP ROLL
W01-1222



24" SLIP ROLL
W01-2422



40" SLIP ROLL
W01-4022



- Hardened gear for long durability
- Comfortable eccentric clamp system and easy operation

49" SLIP ROLL
W01-4914

- Iron frame
- Quick release top roller
- Two different speeds for different materials



51" SLIP ROLL
W01-5116



SLIP ROLL

- Manual Slip Roll
- Eletric Slip Roll

Stock No.	174006	174007	174001	174002	174004	174005	174104							
Model	SJ-320		SJ-300		W01-1222		W01-2422		W01-4022		W01-5116		W01-4914	
Max.thickness	20 Ga.	1.0 mm	20 Ga.	1.0 mm	22 Ga.	0.8 mm	22 Ga.	0.8 mm	22 Ga.	0.8 mm	16 Ga.	1.5 mm	14 Ga.	2.0 mm
Max.width	12.60"	320 mm	12"	300 mm	12"	305 mm	24"	610 mm	40"	1000 mm	51"	1300 mm	49"	1250 mm
Dia.of roll	1.26"	32 mm	1.26"	32 mm	1"	25.4 mm	1.5"	38 mm	1.97"	50 mm	2.95"	75 mm	2.36"	60 mm
Packing size	19"x9"x8"		19"x9"x8"		21"x10"x11"		38"x11"x15"		57"x13"x21"		67"x17"x22"		71"x20"x28"	
	48x22x18 cm		48x22x18 cm		54x24x28 cm		95x27x38 cm		145x32x52 cm		170x43x56 cm		180x50x71 cm	
N.W./G.W.	26/29 lbs		29/31 lbs		29/31 lbs		82/88 lbs		190/231 lbs		429/495 lbs		504/590 lbs	
	12/13 kg		13/14 kg		13/14 kg		37/40 kg		86/105 kg		195/225 kg		229/268 kg	



51" ELECTRIC SLIP ROLL
ESR-5103

- Asymmetrical roll bending machine with 3 high strength steel rollers
- Fixed top roller, adjustable lower and rear rollers
- Standard series wire core groove
- Top roll swing out across cam lock
- supplied with conical bending feature



Video



51" ELECTRIC SLIP ROLL



ESR-5116

ESR-5113

ESR-5108



Order online kakaiindustrial.com



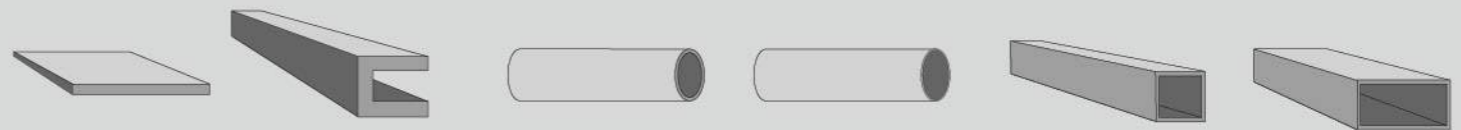
60" ELECTRIC SLIP ROLL
ESR-6010



98" ELECTRIC SLIP ROLL
ESR-9812E

- Electric lifting of back roller
- Digital indicator of back roller position

Stock No.	191101		191104		191105		191108		191106		191113	
Model	ESR-5116		ESR-5113		ESR-5108		ESR-5103		ESR-6010		ESR-9812E	
Max. rolling thickness	16 Ga.	1.5	13 Ga.	2.5	8 Ga.	4.5	3 Ga.	6.5	10 Ga.	3.5	12 Ga.	2.5
Max.rolling width	51"	1300	51"	1300	51"	1300	51"	1300	60"	1550	98"	2510
Dia.of roller	2.95"	75	3.54"	90	4.72"	120	5.9"	150	4.72"	120	5.5"	140
Min. rolling Dia.	3.34"	85	3.94"	100	5.12"	130	6.69"	170	5.12"	130	6.3"	160
Motor power(kW)	0.75 (3PH)		1.5 (3PH)		2.2 (3PH)		3.0 (3PH)		2.2 (3PH)		3.0 (3PH)	
Roller speed (rpm)	8.8 (60Hz)		10.8 (60Hz)		11.2 (60Hz)		7.8 (60Hz)		7.8 (60Hz)		7.8 (60Hz)	
Packing size	70"x23"x43"		79"x28"x48"		79"x30"x51"		82"x32"x54"		88"x30"x50"		135"x32"x52"	
	179x59x110 cm		200x70x122 cm		200x76x129 cm		208x80x137 cm		222x76x127 cm		342x83x132 cm	
N.W./G.W.	661/787 lbs		1199/1386 lbs		1650/1848 lbs		1991/2211 lbs		1848/2057 lbs		3322/3762 lbs	
	300/357 kg		545/630 kg		750/840 kg		905/1005 kg		840/935 kg		1510/1710 kg	



ROLL BENDER TR-60

- One set rollers delivered with machine
- Supplied optional rollers
- With large capacity
- Standard roller:
1-1/2" (38 mm) Round tube rollers
- Packing size: 25"x12"x19" (64x29x49 cm)
- N.W./G.W.: 75/86 lbs (34/39 kg)

Material	Max. capacity		Minimum radius	
Flats	1-1/4"	31.75 mm	10"	254 mm
C Channel	1"x2"	25.4x50.8 mm	60"	1524 mm
Round pipe	1-1/2"	38.1 mm	20"	508 mm
Round tube	2"	50.8 mm	60"	1524 mm
Square tube	2"	50.8 mm	70"	1778 mm
Rect.tube	1"x2"	25.4x50.8 mm	60"	1524 mm



Video

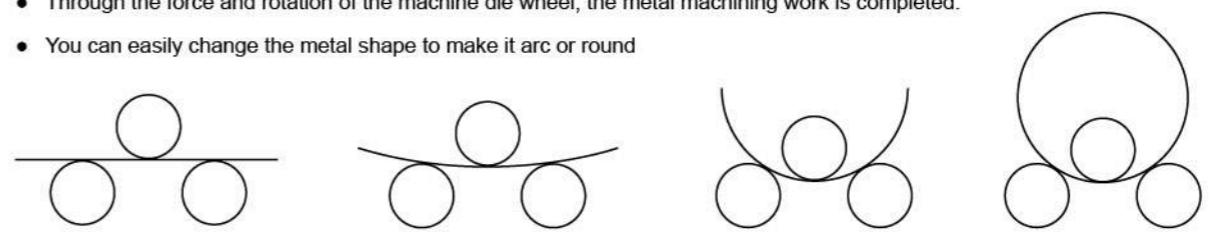


FORMING

- Tube / Pipe Roll Bender
- Universal Bender
- Arbor Press
- Bead Roller
- Shrinker & Stretcher
- Compact Bender
- Pipe/Tube Bender
- English Wheel
- Pneumatic Planishing

What is the tube roller ?

- Through the force and rotation of the machine die wheel, the metal machining work is completed.
- You can easily change the metal shape to make it arc or round



(Specific shape depends on the actual operation)



Video



Square Tube / Pipe Roll Bender

TR-40

- This model is very superior and convenient for square tub rectangular tubes.
- It can bend various capacity workpieces by one set roller delivered with machine.
- So you can save a lot of money, time and labor by using this machine
- Packing size: 22"x10"x16" (55x25x40 cm)
- N.W./G.W.: 44/46 lbs (20/21 kg)

Min. diameter				
Mild steel	0.78"x0.78"x18 Ga.	1"x1"x18 Ga.	1.18"x1.18"x16 Ga.	1.57"x1.57"x16 Ga.
	20x20x1.2 mm	25x25x1.2 mm	30x30x1.5 mm	40x40x1.5 mm
Copper	0.78"x0.78"x16 Ga.	1"x1"x16 Ga.	1.18"x1.18"x15 Ga.	1.57"x1.57"x15 Ga.
	20x20x1.5 mm	25x25x1.5 mm	30x30x1.75 mm	40x40x1.75 mm
Aluminum	0.78"x0.78"x15 Ga.	1"x1"x15 Ga.	1.18"x1.18"x14 Ga.	1.57"x1.57"x14 Ga.
	20x20x1.75 mm	25x25x1.75 mm	30x30x2 mm	40x40x2 mm
Min r	7"	6.69"	7.87"	8.66"
	180 mm	170 mm	200 mm	220 mm
Min Φ	17.71"	19.68"	21.65"	23.62"
	450 mm	500 mm	550 mm	600 mm



Video

ROLL BENDER
TR-50



- Hardened steel top plate
- Enlarged outrigger base plate for easier mounting
- Optional rollers can be supplied.
- Standard roller: 1.5" (38 mm) Round tube rollers
- Packing size: 22"x22"x17" (56x56x43 cm)
- N.W./G.W.: 97/119 lbs (44/54 kg)



RING ROLLER
PR-3

- Portable hand crank ring roller
- Round steel capacity: 0.26" (6.5 mm)
- Flat steel: 1"x0.16" (25x4 mm)
- Packing size: 9"x8"x8" (22x21x20 cm)
- N.W./G.W.: 13/15 lbs (6/7 kg)



Order online kakaindustrial.com

Optional Rollers fo TR-60,TR-50

Capacity

TR-60

TR-50

Stock No.

Stock No.



Round Tube Rollers

1. Round Tube Rollers Sizes

1/2" Round Tube Rollers	191009-101	191007-101
5/8" Round Tube Roller s	191009-102	191007-102
3/4" Round Tube Rollers	191009-103	191007-103
7/8" Round Tube Rollers	191009-104	191007-104
1" Round Tube Rollers	191009-105	191007-105
1 1/8" Round Tube Rollers	191009-106	191007-106
1 1/4" Round Tube Rollers	191009-107	191007-107
1 3/8" Round Tube Rollers	191009-108	191007-108
1 1/2" Round Tube Rollers	191009-109	191007-109
1 5/8" Round Tube Rollers	191009-110	191007-110
1 3/4" Round Tube Rollers	191009-111	191007-111
2" Round Tube Rollers	191009-112	191007-112



Round Pipe Rollers

2. Round Pipe Rollers Sizes

1/4" Pipe(0.54"OD) Rollers	191009-201	191007-201
3/8" Pipe(0.675"OD) Rollers	191009-202	191007-202
1/2" Pipe(0.84"OD) Rollers	191009-203	191007-203
3/4" Pipe(1.05"OD) Rollers	191009-204	191007-204
1" Pipe(1.315"OD) Rollers	191009-205	191007-205
1 1/4" Pipe(1.66"OD) Rollers	191009-206	191007-206
1 1/2" Pipe(1.90"OD) Rollers	191009-207	191007-207



Squaer Tube Rollers

3. Square Tube Rollers Sizes

1/2" Square Tube Rollers	191009-301	191007-301
3/4" Square Tube Rollers	191009-302	191007-302
1" Square Tube Rollers	191009-303	191007-303
1 1/4" Square Tube Rollers	191009-304	191007-304
1 1/2" Square Tube Rollers	191009-305	191007-305
1 3/4" Square Tube Rollers	191009-306	191007-306
2" Square Tube Rollers	191009-307	191007-307



Flat Stock Rollers

4. Misc. Rollers Sizes

1x2" Rectangular Tube Rollers	191009-401	191007-401
1 1/4" Flat Stock Rollers	191009-402	191007-402
1x2" C Channel Rollers	191009-403	191007-403

- Special requirement for metric rollers can be supplied

UNIVERSAL BENDER

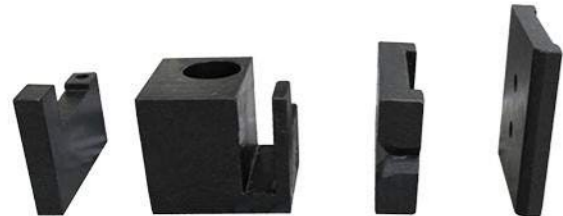
UB-100A

- Easy and precise operation
- Wide supporting face ensuring safe and reliable operation
- Bending angle of various radius by changing and turning
- Bending angle up to 120 degree



UNIVERSAL BENDER

UB-70/UB-100



Video

MINI UNIVERSAL BENDER

MUB-1

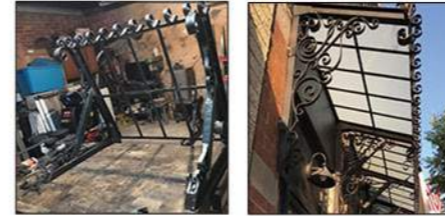
- Item No:173207
- Forms wire, flat metal and tubing into clamps, handle brackets, hooks, coils, and more
- Make sharp angle bends in wire and rod
- Includes circle pins for 3/16", 1/4", 1/2" dia, circle i" diacircle die, form pin follower, sharp angle die, gauge and handle



MANUAL SCROLL BENDER

SBG-30

- For angular, roll, hoop and coil bending
- To produce grid, door gate, balcony railing pation furniture as well as rod iron lamps, suitable for steel brass copper and aluminum



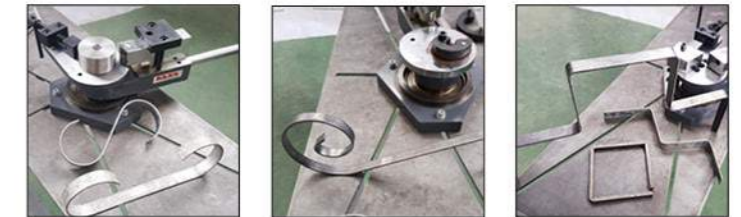
Scroll size: 3", 5", 7"



Video

MANUAL UNIVERSAL BENDER

SBG-40 Scroll size: 5-1/2"



Radius Bending

Scroll Bending

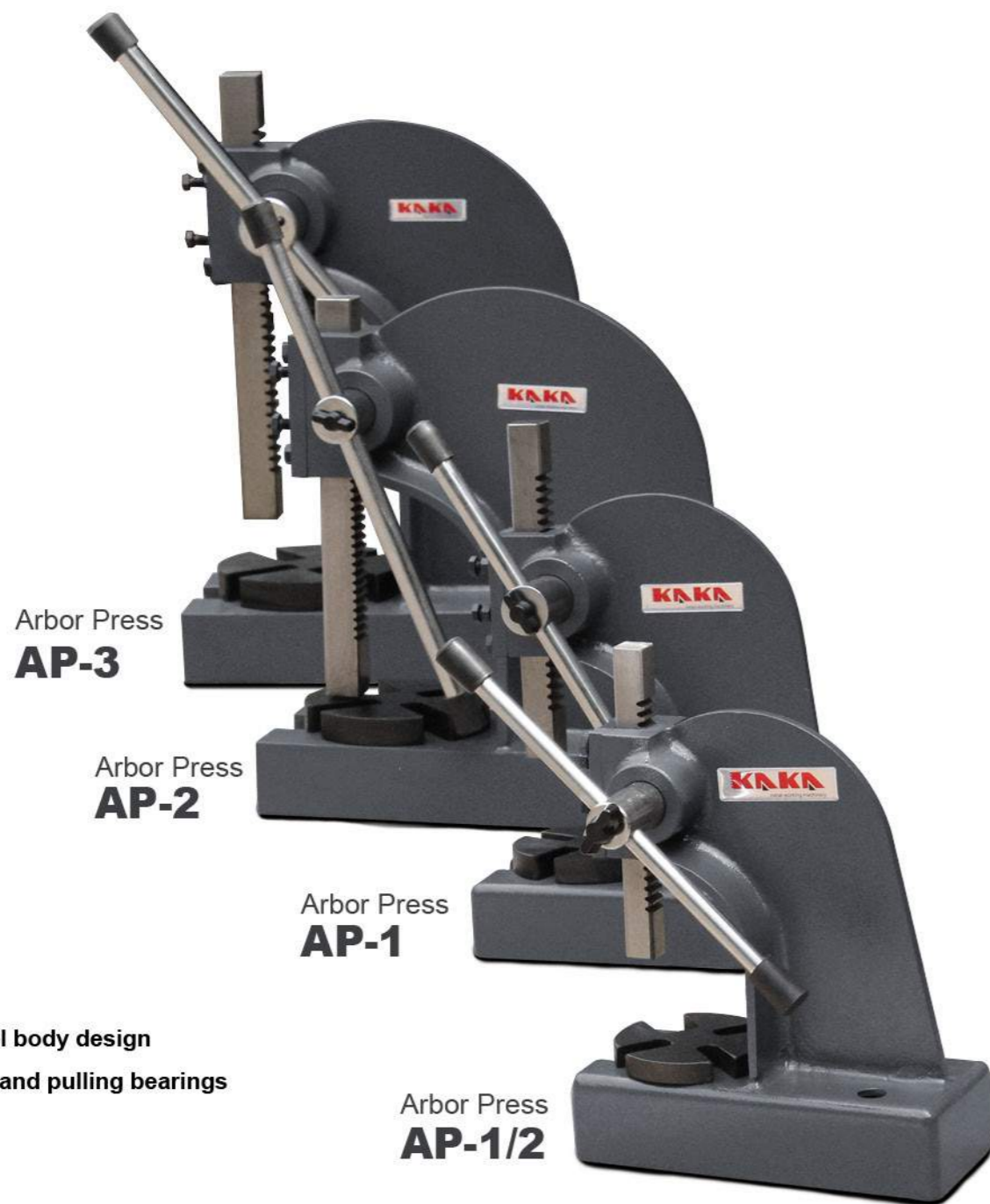
Angle Bending



- Shape materials such as Steel, Iron, Wrought Iron, Brass, Copper and Aluminum.



Stock No.	173217	173203	173201	173202	173216	173207
Model	SBG-30	SBG-40	UB-70	UB-100	UB-100A	MUB-1
Capacity	Flat steel	1.18"x0.394" 30x10 mm	1.18"x0.314" 30x8 mm	2.75"x0.39" 70x10 mm	3.94"x0.39" 100x10 mm	3.94"x0.28" 100x7 mm
	Round steel	0.394" 10 mm	0.59" 15 mm	0.79" 20 mm	0.79" 20 mm	0.87" 22 mm
	Square steel	0.394"x0.394" 10x10 mm	0.511"x0.511" 13x13 mm	0.7"x0.7" 18x18 mm	0.7"x0.7" 18x18 mm	0.79"x0.79" 20x20 mm
	Angle steel	-	-	2.36"x0.31" / 2.76"x0.59" 60x8 / 70x15 mm	2.36"x0.31" / 3.94"x0.47" 60x8 / 100x12 mm	-
Packing size	22"x12"x9"	20"x12"x9"	Body: 15"x12"x11" Body: 39x29x28 cm	Body: 15"x12"x11" Body: 39x29x28 cm	22"x12"x10"	(1PC) 13"x4"x4" (1PC) 32x10x10 cm
	55x30x22 cm	51x31x22 cm	Handle: 29"x8"x5" Handle: 73x19x13 cm	Handle: 29"x8"x5" Handle: 73x19x13 cm	55x32x24 cm	(10PCS) 20"x14"x9" (10PCS) 50x35x23 cm
N.W./G.W.	59/62 lbs	51/53 lbs	62/64 lbs	68/70 lbs	73/75 lbs	(1PC) 6.2/6.6 lbs
	27/28 kg	23/24 kg	28/29 kg	31/32 kg	33/34 kg	(1PC) 2.8/3 kg



Arbor Press
AP-3

Arbor Press
AP-2

Arbor Press
AP-1

Arbor Press
AP-1/2

- High quality steel body design
- For press-fitting and pulling bearings
- 4-position plate

Stock No.	176501		176502		176503		176504	
Model	AP-1/2		AP-1		AP-2		AP-3	
Capacity	1/2 ton		1.0 ton		2.0 ton		3.0 ton	
Max.height & dia	3.54"x3.15"	90x80 mm	4.33"x3.94"	110x100 mm	7.09"x4.84"	180x123 mm	11.22"x6.42"	285x163 mm
Largest arbor	1.02"	26 mm	1.14"	29 mm	1.57"	40 mm	1.73"	44 mm
Table size	Φ 3.74"	Φ 95 mm	Φ 4.72"	Φ120 mm	Φ 6.1"	Φ155 mm	Φ 7.28"	Φ185 mm
Ram square	0.75"x0.75"	19x19 mm	1"x1"	25x25 mm	1.26"x1.26"	32x32 mm	1.5"x1.5"	38x38 mm
Press Ht	11"	280 mm	13.98"	355 mm	17.52"	445 mm	24.21"	615 mm
Base size	9.45"x6.69"	240x170 mm	10.55"x7.48"	268x190 mm	17"x10.24"	432x260 mm	17.91"x11.81"	455x300 mm
Packing size	11"x5"x12"	26x12x29 cm	12"x6"x14"	29x14x35 cm	19"x8"x19"	46x20x46 cm	19"x10"x26"	46x24x64 cm
N.W./G.W.	15/18 lbs	7/8 kg	24/26 lbs	11/12 kg	66/68 lbs	30/31 kg	99/104 lbs	45/47 kg



Order online kakaindustrial.com

ARBOR PRESS



Video

AP-1S



AP-2S

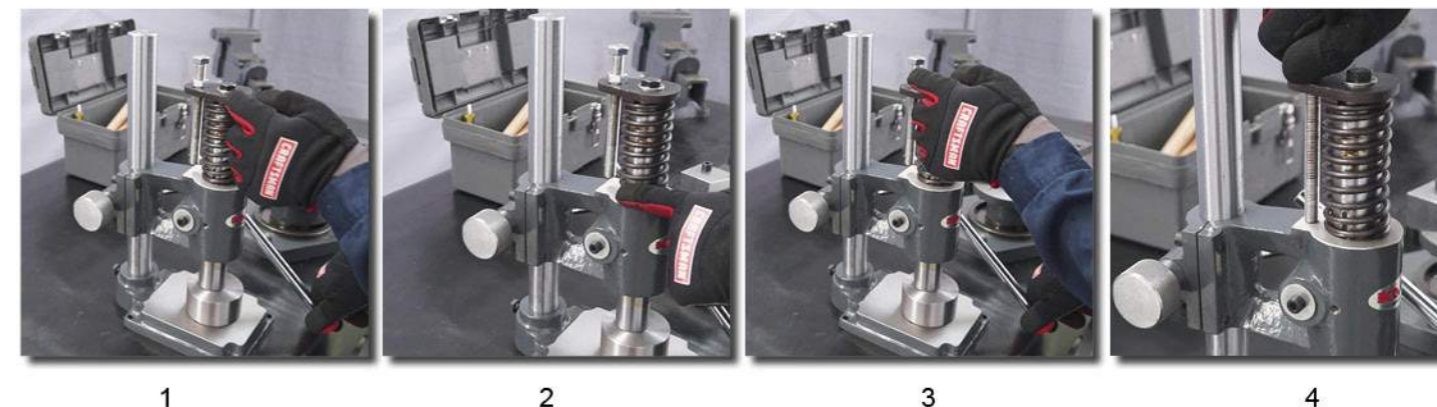


MP-1



Stock No.	176516		176512		176513	
Model	MP-1		AP-1S		AP-2S	
Capacity	10 KN		10 KN		20 KN	
Handle power	-		200 N		200 N	
Travel	4.72"	120 mm	5.9"+2.36"	150+60 mm	7.87"+3.15"	200+80 mm
Table size	9.25"	235 mm	7.87"x4.72"	200x120 mm	7.87"x5.9"	200x150 mm
Packing size	26"x12"x8"	65x30x20 cm	17"x9"x8"	44x24x21 cm	17"x9"x8"	44x24x21 cm
N.W./G.W.	55/68 lbs	25/31 kg	24/26 lbs	11/12 kg	35/37 lbs	16/17 kg

• Adjustable limited



1

2

3

4

BEAD ROLLER KIT

RM-08



Video

- Include:
- 1/4" turning
 - 1/8" turning
 - Wining, Crimping, Burring & ogee beads each 1 set

RM-12



- Include:
- 3 bead dies: 1-1/4", 3/8", 1/2"
 - 3 step dies: 1/16", 1/8", 1/4"

RM-18



- Include:
- 1/16" flanging mandrel • 1/8" flanging mandrel
 - 1/4" flanging mandrel • 3/8" bead mandrel
 - 1/2" bead mandrel

Stock No.	173205	173226	173206
Model	RM08	RM12	RM18
Capacity	22 Ga. 0.8 mm	18 Ga. 1.2 mm	18 Ga. 1.2 mm
Throat depth	7" 177 mm	12" 305 mm	18" 457 mm
Packing size	20"x18"x7" 50x45x16 cm	15"x18"x7" 38x45x16 cm	29"x11"x6" 73x27x14 cm
N.W./G.W.	48/53 lbs 22/24 kg	42/46 lbs 19/21 kg	53/57 lbs 24/26 kg

ROTARY MACHINE

RM-A

- Can bench mounted with "EZ Edge Finder"
- Hardened steel rollers
- Head rotates 360°



RM-B

- Easy change rollers
- Hardened steel rollers
- Fade adjustment no tools needed



Stock No.	173810	173811
Model	RM-A	RM-B
Capacity	20 Ga. 1.0 mm	20 Ga. 1.0 mm
Throat depth	-	4.49" 114 mm
Packing size	15"x8"x7" 39x20x18 cm	15"x8"x7" 39x20x18 cm
N.W./G.W.	27/29 lbs 12/13 kg	29/31 lbs 13/14 kg

BEAD FORMER

B/F-3/8"

- Makes 0.125" (3 mm) beads on materials up to 22 Ga. (0.7 mm) thickness
- Works on tubing as small as 0.375" (10 mm) diameter
- Ideal for creating beads on the end of tubing to hold hoses



Stock No.: 173808
 Model: BF-3/8"
Capacity:
 Make Beads: 0.125" (3 mm)
 Thickness: 22 Ga. (0.7 mm)
 Smallest Dia: 0.375" (10 mm)
 Packing size: 8"x6"x3" 20x16x7 cm
 N.W./G.W: 4/5 lbs (2/2.5 kg)



- 4 sets standard rollers
- Heavy and solid cast iron construction
- Special steel adjustable bottom spindle
- Self-braking motor with subframe (E-type)
- Easy to operate with foot pedal control (E-type)



BEAD ROLLER

TB-12

BEAD ROLLER

ETB-12



Video



BEAD ROLLER

ETB-25 / ETB-40

• Standard Rollers



• Extra Rollers



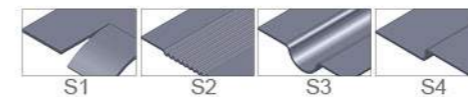
Stock No.	173801	173802
Model	TB-12	ETB-12
Thickness max	18 Ga. 1.2 mm	18 Ga. 1.2 mm
Cylinder length	5.5" 140 mm	5.5" 140 mm
Throat depth	8" 200 mm	8" 200 mm
Motor power	-	0.75kW
N.W./G.W.	101/130 lbs 46/59 kg	256/285 lbs 130/175 kg
Packing size	23"x13"x24" 58x32x62 cm	44"x19"x59" 110X48X152 cm

- Steel welded construction frame
- Adjustable idle roller
- Steel shaft with bronze bushings
- Reduction motor with brake system
- Movement of rollers with foot pedal
- Complete with stand
- 4 sets standard rollers

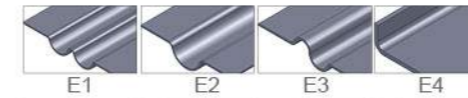
Stock No.	173803	173804
Model	ETB-25	ETB-40
Thickness max	12 Ga. 2.5 mm	8 Ga. 4 mm
Cylinder length	4.72" 120 mm	6.5" 165 mm
Throat depth	11" 280 mm	11.81" 300 mm
Motor power	1.5 kW	2.2 kW
N.W./G.W.	540/690 lbs 245/313 kg	793/970 lbs 360/440 kg
Packing size	58"x23"x54" 147x58x135 cm	65"x23"x56" 165x58x140 cm

Roller For ETB-25

• Standard Rollers

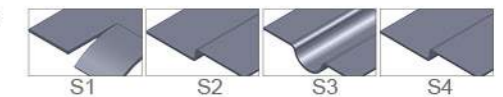


• Extra Rollers

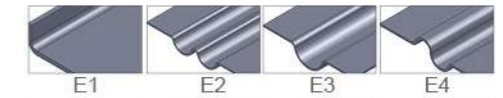


Roller For ETB-40

• Standard Rollers



• Extra Rollers





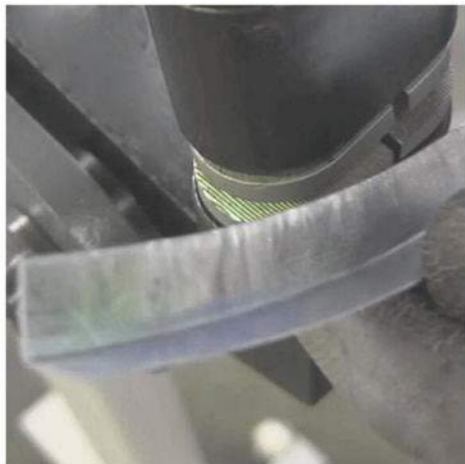
- 1-shriker jaw
- 1-stretcher jaw
- Quick change jaws to make forming faster
- Easy to move with wheels



Video



- Bring chamfered plate with inside and outside radius into professional S-form
- The shrinker contracts sheet metal for inside curves
- The stretcher expands sheet metal for outside curves
- Standard: one Body+Two Jaws



SHRINKER & STRETCHER
FSM-16



Order online kakaindustrial.com

SHRINKER & STRETCHER
SS-16

Standard Accessories

- Shrinker jaw, stretcher jaw and handle

Optional Accessories

- Foot pedal



Video



Stand for SS-16

SHRINKER & STRETCHER
SS-18FD

Standard:

- Two body • Two jaws • One stand



SHRINKER & STRETCHER
SS-18

- Bring chamfered plate with inside and outside radius into professional S-form
- The shrinker contracts sheet metal for inside curves
- The stretcher expands sheet metal for outside curves
- Standard: One Body + Two Jaws



SHRINKER & STRETCHER
SG-18

Stock No.	173208		173228		173220		173225		173223	
Model	SS-18		SG-18		SS-16		FSM-16		SS-18FD	
Capacity	18 Ga	1.2 mm	16 Ga	1.8 mm	16 Ga	1.8 mm	16 Ga	1.8 mm	18Ga	1.2 mm
Throat depth	1"	25.4 mm	2-3/4"	70 mm	8"	208 mm	6"	152 mm	1"	25.4 mm
Packing size	18"x9"x5"	46x22x13 cm	18"x9"x5"	46x22x13 cm	14"x7"x18"	35x18x46 cm	52"x22"x14"	131x55x35 cm	46"x18"x7"	115x46x19 cm
N.W./G.W.	11/13 lbs	5/6 kg	11/13 lbs	5/6 kg	53/57 lbs	24/26 kg	84/132 lbs	38/60 kg	64/70 lbs	29/32 kg



MANUAL TUBE BENDER

UBM-30

- Scroll attachment included
- 7 sets dies for pipe
- 7 sets round dies
- 1 sharp angle die



Video



COMPACT BENDER

YP-9

- 44" telescoping handle,
- 7 round dies: 1", 1-1/4", 1-1/2", 1-3/4", 2", 2-1/2", 3"
- 1 sharp angle die



COMPACT BENDER

YP-38



FORM BENDER

FB-4

- For cold forming of steel and metals including setup plate for table clamping
- 2.5 tons pressing capacity
- Mild steel: 19x17 mm, 50x11 mm, 101x8 mm
0.75"x0.67", 1.97"x0.43", 3.98"x0.31"
- Stamp a stencil for round roll bending available
- Packing size: 17"x8"x7" (44x21x18 cm)
- N.W./G.W.: 18/22 lbs (8.5/10 kg)



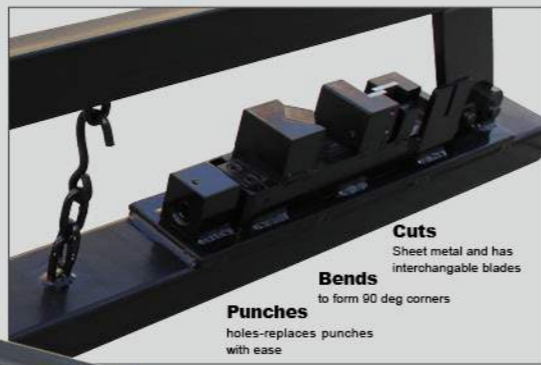
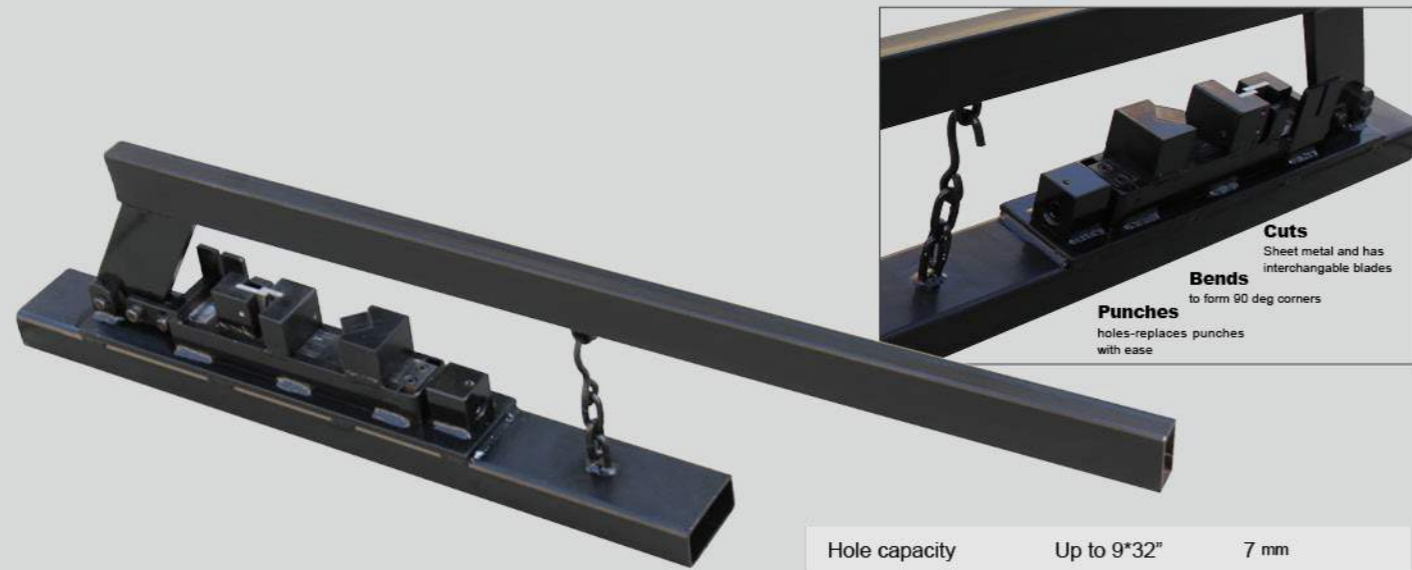
Stock No.	Model	Max. steel capacity	Bending angle	Packing size	N.W./G.W.
173213	YP-9	0.31"x1.26", 0.24"x1.97" 8X32 mm, 6X50 mm	0-200°	27"x11"x6" 67x26x13 cm	35/37 lbs 16/17 kg
173214	YP-38	0.31"x1.26", 0.24"x1.97" 8X32 mm, 6X50 mm	0-200°	35"x11"x11" 88x26x26 cm	44/46 lbs 20/21 kg
173231	UBM-30	0.31"x1.97", 0.24"x1.97" 8X50 mm, 6X50 mm	0-200°	35"x11"x11" 88x26x26 cm	68/70 lbs 31/32 kg



Order online kakaindustrial.com

470-282-5298

info@kakaindustrial.com



COMBINATION OF SHEAR, BRAKE & PUNCH PBS-3

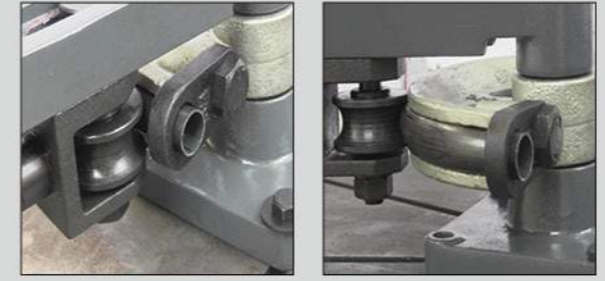
- The Punch Tools versatile Hanger Board is the ultimate tool for onsite sheet metal fabrication.
- This three-in-one tool can bend, punch, and cut a variety of materials and sizes, making custom installation easy and affordable.

Hole capacity	Up to 9"32"	7 mm
Shear capacity	16 Ga.	1.5 mm
Bending capacity	16 Ga.	1.5 mm
Bend angle	90°	
Power requirement	Manual	
Packing size	42"x5"x8"	105x12x19 cm
N.W./G.W.	36/47 lbs	16/21 kg



PORTABLE MANUAL PIPE BENDER MY-22

- Stock No. 173215
- Model: MY-22
- Round pipe(outer dia.): 3/8", 1/2", 9/16", 5/8", 3/4", 7/8"
- Square pipe(outer dia.): 3/4", 1"
- Wall thickness: 22 Ga.-18 Ga. (0.8-1.2 mm)
- Max. bending angle: 180°
- Packing size: 21"x9"x7" (62x35x16 cm)
- N.W./G.W.: 53/59 lbs (24/27 kg)



Video

MANUAL TUBE BENDER TB-180

- 180 degree bending by once time
- Capacity : 3/8" -1" OD tube, 0.49"Wall to 0.95" Wall
- Delivered with one standard tooling for 3/4" OD with CLR 2.5" / 20mm OD with CLR 60mm
- Simply operation, Saving your time
- Easily fixed with vise



Stock No.	Tube size OD	CLR
173250-01	3/8"	2"
173250-02	1/2"	2"
173250-03	5/8"	2-1/2"
173250-04	7/8"	3-1/2"
173250-04	1"	3-1/2"



HYDRAULIC TUBE BENDER HB-8

- Dies include: 3/4", 1", 1-1/2", 1-5/8", 1-3/4"



Video

HYDRAULIC PIPE BENDER HB-10



- Dies include: 1/2", 3/4", 1", 1-1/4", 1-1/2", 2"



Video

Stock No.	175005		175001	
Model	HB-8		HB-10	
Max. pressure	8 ton		10 ton	
Max.ram strike	4.72"+2.36"	120+60 mm	6.1"	155 mm
Packing size	29"x15"x11"	72X36X28 cm	28"x24"x9"	71X59X22
N.W./G.W.	101/106 lbs	46/48 kg	95/99 lbs	43/45 kg

PNEUMATIC PLANISHING HAMMER

PPH-50

- Anvil sizes: 1", 2", 3" radius
- Speed: 875-1350 rpm
- Anvil-to-hammer opening: 4"
- Operating air pressure: 50 to 100 (Max.) PSI



ENGLISH WHEEL
F1.2x710

- 6 pcs bottom wheels and 1pc upper rolling wheel included with delivery
- Bottom wheel radius: 2", 3", 4", 6", 8", 12"



CLAMPING

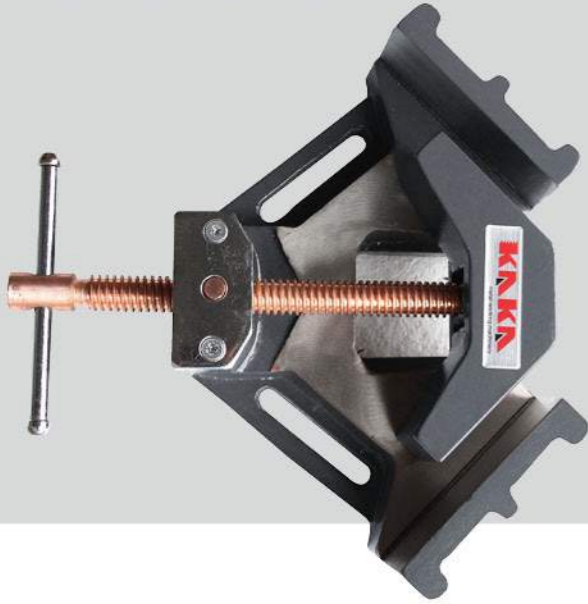
- Angle Clamp
- C-Clamp
- Drill Press Vise

Stock No.	Model	Capacity (steel)	Throat depth	Packing size	N.W./G.W.
173221	F1.2x710	18 Ga.	28"	35"x32"x11"	169/178 lbs
		1.2 mm	710 mm	89x80x27 cm	77/81 kg
192101	PPH500	16 Ga.	20"	30"x26"x10"	51/57 lbs
		1.5 mm	500 mm	76x65x24 cm	23/26 kg



ANGLE CLAMP AC-60/AC-100

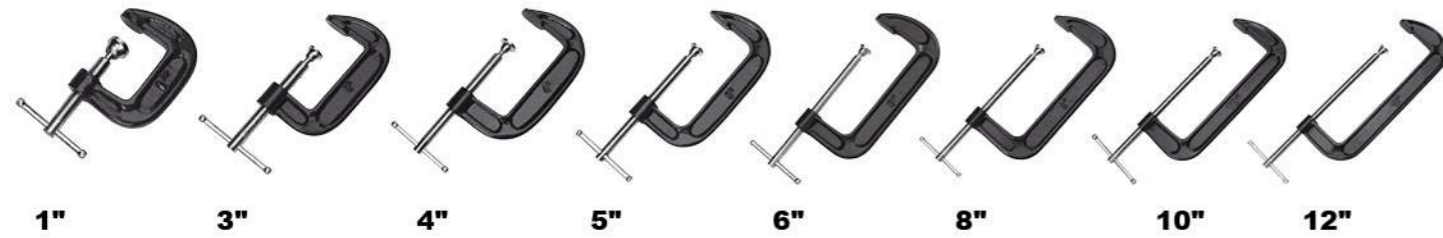
- Perfectly square joints every time
- Self-centering and swiveling jaw
- Copper plated screw spindle 90 degree angle miter vise



Stock No.	176301		176302	
Model	AC-60		AC-100	
Jaw height	1.38"	35 mm	2.36"	60 mm
Jaw width	2.36"	60 mm	3.54"	90 mm
Jaw opening	2.36"	60 mm	3.94"	100 mm
N.W./G.W.	9/11 lbs	4/5 kg	26/29 lbs	12/13 kg
Packing size	8"x8"x5"	20x20x13 cm	11"x11"x5"	28x26x12 cm

C-CLAMP

- Heavy duty malleable steel frame
- Sliding T-bar handle
- Durable baked enamel finish
- Always Guaranteed
- Chrome plated steel screw with swivel pad



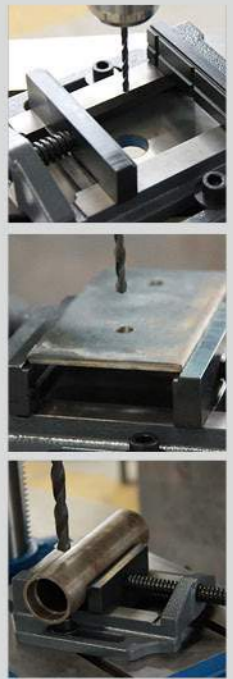
Stock No.	176331	176332	176333	176334	176335	176336	176337	176338	176339
Jaw opening	1"	2"	3"	4"	5"	6"	8"	10"	12"
	25.4 mm	50.8 mm	76.2 mm	101.6 mm	127 mm	152.4 mm	203.2 mm	254 mm	304.8 mm
Weight	0.2 lbs	0.4 lbs	0.9 lbs	1.3 lbs	1.9 lbs	2.4 lbs	3.3 lbs	4.4 lbs	7.3 lbs
	0.1 kg	0.2 kg	0.4 kg	0.6 kg	0.9 kg	1.1 kg	1.5 kg	2 kg	3.3 kg

DRILL PRESS VISE BSM-75N, BSM-100N, BSM-125N, BSM-150N

- Easy vices serie in high quality
- Smooth running with exact jaw guides, also at a high axial load
- Rolled trapezoidal spindle
- Different possibilities of positioning long holes in the foot of the vice



3", 4", 5", 6" refer to Jaw width.



DRILL PRESS VISE TSL-200

DRILL PRESS VISE TSL-140



DRILL PRESS VISE TSL-100

DRILL PRESS VISE TSL-100Q

4" DRILL PRESS VISE BSM-100

- Easy operation with a smart body



5" DRILL PRESS VISE BSM-125

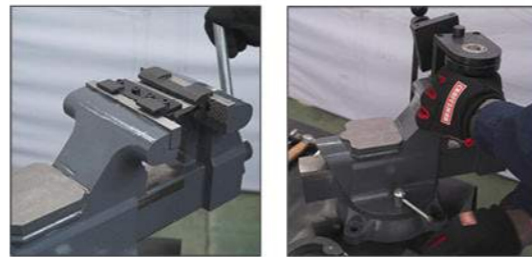
- Fixing plate harden-processed

Stock No.	176310	176313	176311	176312	176321	176322	176323	176324	176303	176304
Model	TSL-100	TSL-100Q	TSL-140	TSL-200	BSM-75N	BSM-100N	BSM-125N	BSM-150N	BSM-100	BSM-125
Jaw width	4"	4"	5-1/2"	8"	1-1/8"	1-1/8"	1-1/2"	1-1/2"	4"	5"
	100 mm	100 mm	140 mm	200 mm	80 mm	105 mm	125 mm	150 mm	100 mm	125 mm
Jaw height	1-1/2"	1-1/2"	2"	2-1/2"	3"	4"	5"	6"	1.18"	1"
	40 mm	40 mm	50 mm	64 mm	27 mm	27 mm	39 mm	39 mm	30 mm	25 mm
Jaw opening	4"	4"	5-1/2"	8"	2-1/8"	3-3/4"	4-1/2"	5-3/8"	4"	5"
	100 mm	100 mm	140 mm	200 mm	55 mm	95 mm	115 mm	135 mm	100 mm	125 mm
Packing size	16"x9"x5"	16"x9"x5"	19"x11"x6"	26"x14"x7"	6"x2"x9"	7"x2"x11"	7"x3"x12"	9"x3"x13"	13"x8"x4"	15"x8"x4"
	40x22x12 cm	40x22x12 cm	49x28x14 cm	65x35x17 cm	15x6x23 cm	18x6x27 cm	19x8x30 cm	22x8x34 cm	33x21x11 cm	38x21x11 cm
N.W./G.W.	18/19 lbs	13/15 lbs	39/41 lbs	77/79 lbs	5/7 lbs	7/9 lbs	9/11 lbs	11/13 lbs	9/11 lbs	22/24 lbs
	8/9 kg	6/7 kg	18/19 kg	35/36 kg	2.5/3.5 kg	3/4 kg	4/5 kg	5/6 kg	4/5 kg	10/11 kg





HOME VISE
HVS-100

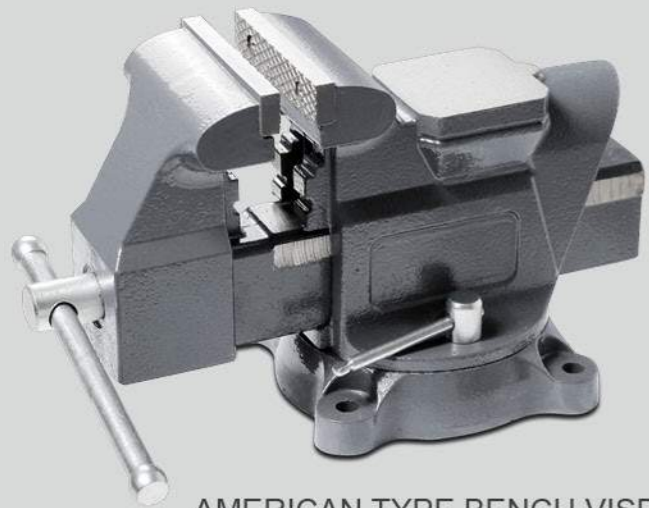


Stock No.	169304	
Model	HVS-100	
Size	4"	100 mm
Width of Jaw	4"	100 mm
Max Opening	4"	103 mm
Throat Depth	0.24"	6 mm
Clamping Force	10 KN	
N.W./G.W.	42/47 lbs	19/21 kg
Packing Size	22"x11"x7"	55x27x17 cm

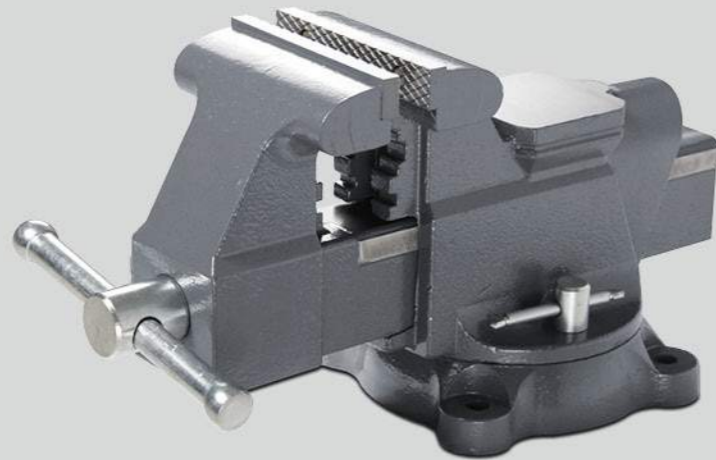
INDUSTRIAL GRADE BENCH VISE
HIS-150



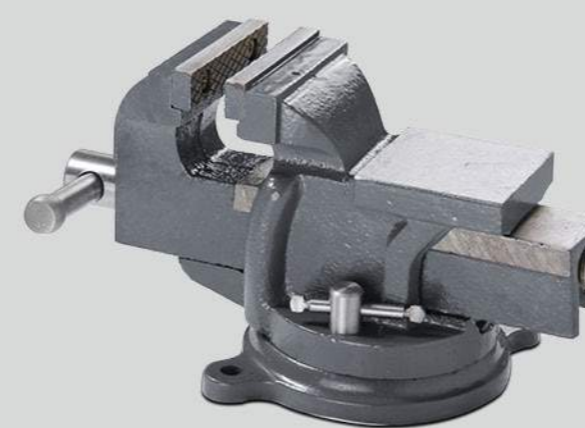
Stock No.	168306		168308	
Model	HIS-150		HIS-200	
Size	6"	150 mm	8"	200 mm
Width of Jaw	6"	150 mm	8"	200 mm
Max Opening	6.69"	170 mm	8.66"	220 mm
Throat Depth	3.39"	86 mm	4.33"	110 mm
Clamping Force	29 KN		40 KN	
N.W./G.W.	42/47 lbs	27/29 kg	132/150 lbs	60/68 kg
Packing Size	20"x5"x10"		22"x11"x7"	
	50x22x25 cm		75x35x36 cm	



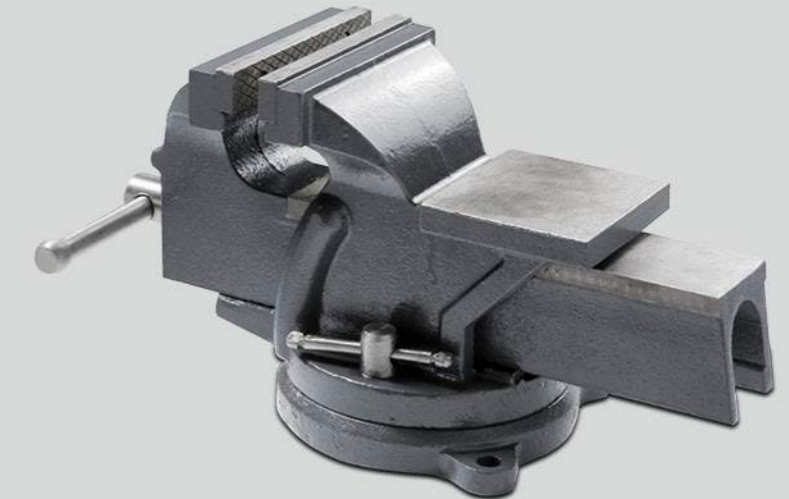
AMERICAN TYPE BENCH VISE
AVS-100



AMERICAN TYPE BENCH VISE
AVS-125



PROFESSIONAL BENCH VISE
HPS-75



PROFESSIONAL BENCH VISE
HPS-125

Stock No.	169504		169505		169506	
Model	AVS-100		AVS-125		AVS-150	
Size	4"	100 mm	5"	125 mm	6"	150 mm
Width of Jaw	4"	100 mm	5"	125 mm	6"	150 mm
Max Opening	5"	127 mm	6"	152 mm	7"	178 mm
Clamping Force	12 KN		15 KN		20 KN	
N.W./G.W.	58/62 lbs	26/28 kg	40/42 lbs	18/19 kg	60/64 lbs	27/29 kg
Packing Size	15"x13"x9"	36x31x22 cm	17"x7"x9"	42x18x21 cm	18"x9"x10"	45x23x25 cm

Stock No.	169803		169804		169805		169806	
Model	HPS-75		HPS-100		HPS-125		HPS-150	
Size	3"	75 mm	4"	100 mm	5"	125 mm	6"	150 mm
Width of Jaw	3"	75 mm	4"	100 mm	5"	125 mm	6"	150 mm
Max Opening	2.36"	60 mm	4"	100 mm	4.13"	105 mm	5"	125 mm
Throat Depth	1.97"	50 mm	2.17"	55 mm	2.72"	69 mm	2.99"	76 mm
Clamping Force	10 KN		10 KN		15 KN		20 KN	
N.W./G.W.	42/47 lbs	19/21 kg	58/62 lbs	26/28 kg	47/51 lbs	21/23 kg	38/40 lbs	17/18 kg
Packing Size	10"x5"x6"	24x12x13 cm	11"x5"x6"	26x12x15 cm	14"x6"x7"	34x14x17 cm	16"x7"x8"	41x17x20 cm



Order online kakaindustrial.com

470-282-5298

info@kakaindustrial.com