

BELT GRINDER

Model: BG-4



OPERATION MANUAL

Technical data

- (1) **Motor (kW):** 1.5Kw
- (2) **Driven Wheel (mm):** \varnothing 130x100mm.
- (3) **Contact Wheel (mm):** \varnothing 130X100mm.
- (4) **Belt Size (mm):** 1220X100mm
- (5) **Belt Speed (m /sec.):** 19m/sec
- (6) **Graphite paper:** 300X120X1.5mm
- (7) **Weight (kg):** 43Kg

Installation:

The machine is delivered in a wooden case. The machine should be placed on a level surface and secured by bolts through the four base plate holes.

Check the following functions:

- A) The belt moves freely.
- B) The belt does not touch the grinding supports.

Belt tracking:

When first starting the machine, the belt may not run centrally on the contact wheel. This is corrected by turning the tracking adjuster (50):

Clockwise - Belt moves towards the left.
Anticlockwise – Belt moves towards the right.

Changing the belt:

- a) Switch off the machine
- b) Ensure the belt is at a complete standstill.
- c) Remove the handle(80) which on the side cover(15)
- d) Open the up cover (20) and side cover(15).
- e) Slacken the belt by turning sleeve(75) to let the sliding support(56) moving left.
- f) Replace the belt. Note correct direction of rotary of the belt.
- g) Tighten the belt by turning sleeve(75) to let the sliding support(56) moving right.
- h) Run the machine, meanwhile adjust bolt(49) and nut(50) to let the belt running well.
- i) To adjust bolt(60&63) and nut(64) only after the machine is completely disassembled and need to reinstall. Normally the belt is adjust well when the machine is after factory settings, there is no need to touch these two spare parts.

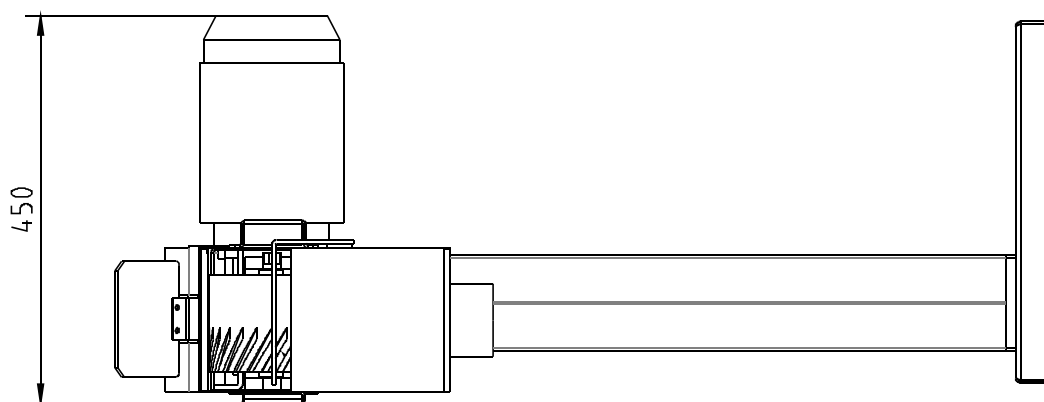
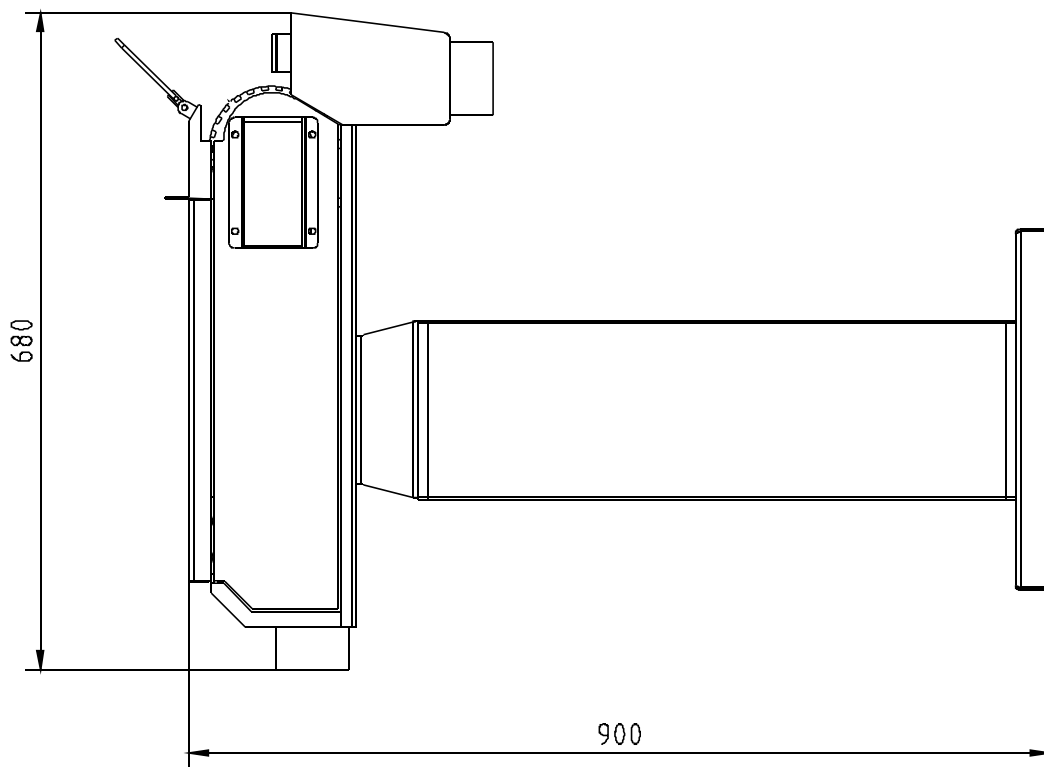
Machinery general safety warnings

- For safety, machine must be set up, used and serviced properly.
- Read, understand and follow instructions in the operator's and parts manual which was shipped with your machine.

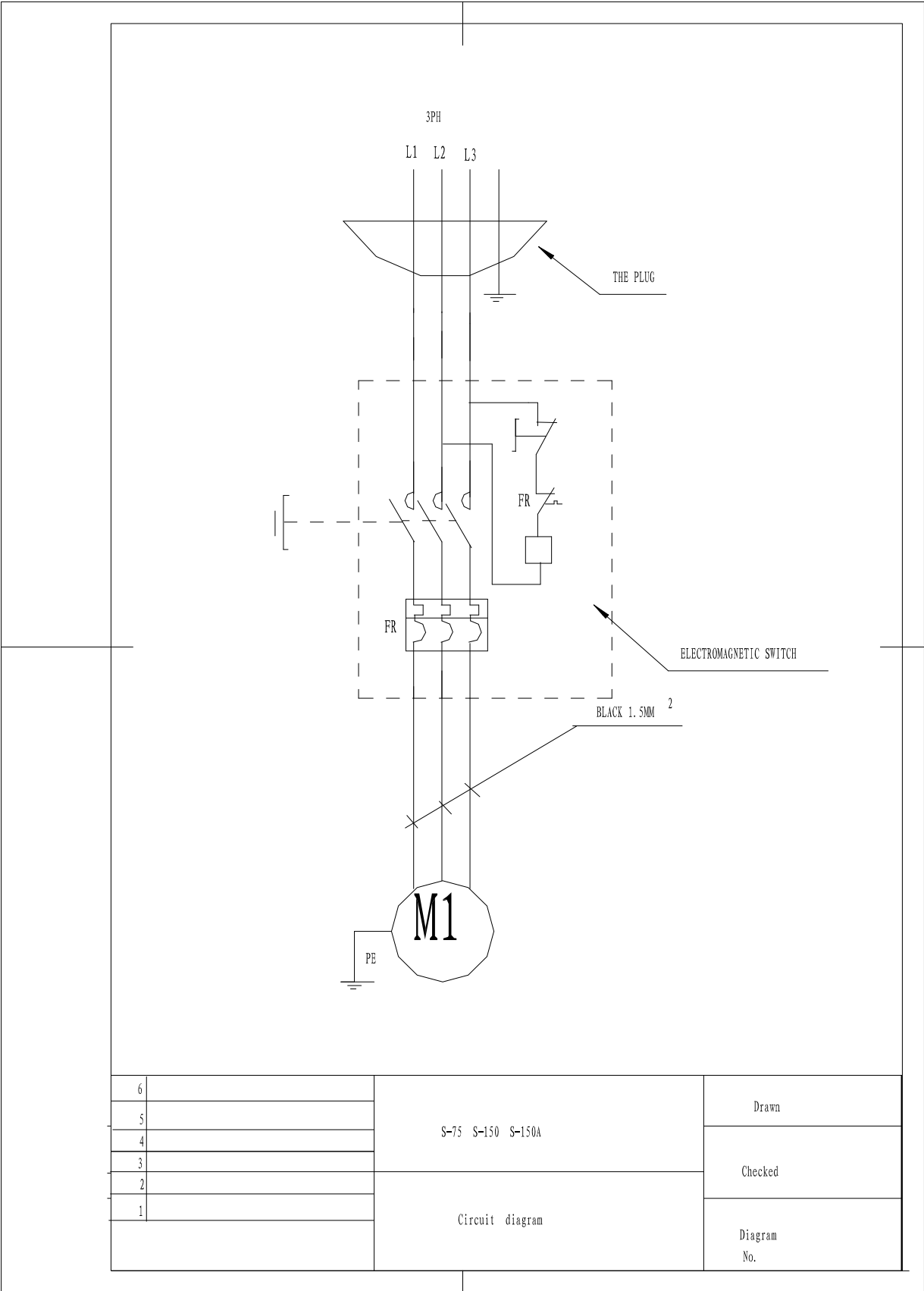
When setting up machine:

- Always avoid using machine in damp or poorly lighted work areas.
- Always be sure machine is securely anchored to the floor.
- Always keep machine guards in place.
- Always put start switch in "OFF" position before plugging in machine.

1. Always wear protective eye wear when operating machinery.
2. Wear proper apparel. No loose clothing or jewelry which can get caught in moving parts. Rubber soled foot wear is recommended for best footing.
3. Never leave the machine running while unattended. Machine shall be shut off whenever it is not in operation.
4. Never brush away chips while the machine is inoperation.
5. Keep work area clean. Cluttered areas invite accidents..
6. Use only recommended accessories and follow manufacturer's instructions pertaining to them.
7. All visitors should be kept at a safe distance from the work area. Make workshop completely safe by using padlocks, master switches, or by removing starter keys.
8. When setting up the machine, make sure the motor is rotating as the arrow on the machine.

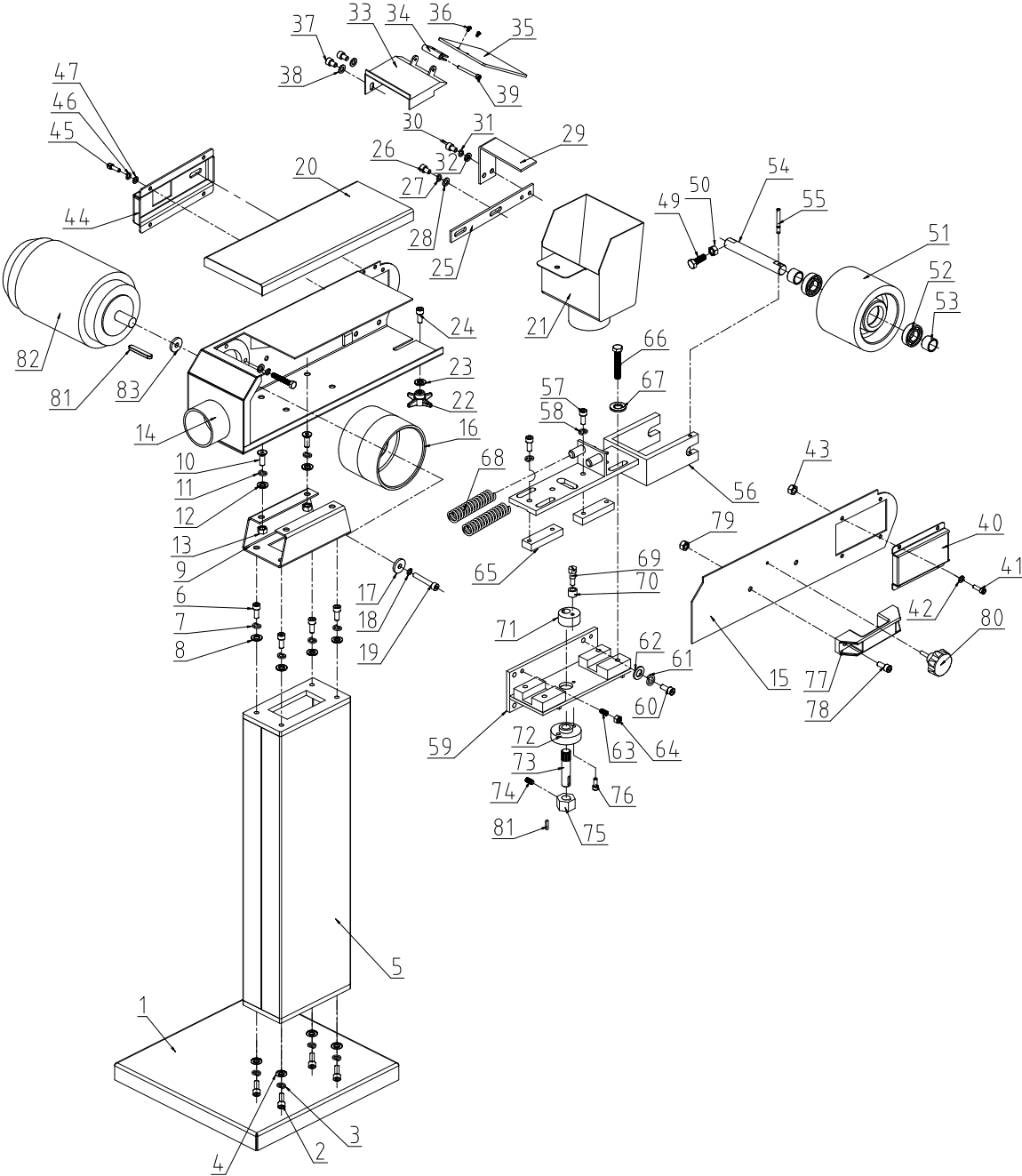


Electrical drawing:



6		S-75 S-150 S-150A	Drawn
5			Checked
4			
3		Circuit diagram	Diagram No.
2			
1			

Explored drawing:



Spare parts list:

Part#	Description	Q'ty	Part#	Description	Q'ty
1	Base plate	1	42	Flat washer	4
2	Bolt M8x25	4	43	Flat washer M6	4
3	Elastic washer	4	44	Right side cover	1
4	Flat washer	4	45	Bolt M6x20	4
5	Column	1	46	Elastic washer	4
6	Bolt M8x25	4	47	Flat washer	4
7	Elastic washer	4	49	Bolt M8x40	1
8	Flat washer	4	50	Nut M8	1
9	Support seat	1	51	Contact wheel	1
10	Bolt M8x25	4	52	Deep groove ball bearing 6004-2Z	2
11	Elastic washer	4	53	Short sleeve	2
12	Flat washer	4	54	Rubber wheel shaft	1
13	Nut M8	4	55	Bolt pin	1
14	Body	1	56	Sliding support	1
15	Side cover	1	57	Bolt M8x25	4
16	Driven wheel	1	58	Elastic washer	4
17	Washer	1	59	Sliding seat	1
18	Elastic washer	1	60	Bolt M8x20	4
19	Bolt M6X50	1	61	Elastic washer	4
20	Up cover	1	62	Flat washer	4
21	Chip box	1	63	Bolt M8x20	4
22	Chip box handle	1	64	Nut M8	4
23	Flat washer	1	65	Slider	2
24	Bolt M8x20	1	66	Bolt M10x40	4
25	Support	1	67	Flat washer	4
26	Bolt M8x20	2	68	Spring	2
27	Elastic washer	2	69	Bolt	1
28	Flat washer	2	70	Sleeve	1
29	Supporting seat	1	71	Eccentric disc	1
30	Bolt M8x20	2	72	Fixed seat	1
31	Elastic washer	2	73	Shaft	1
32	Flat washer	2	74	Bolt M8X20	1
33	Guard support	1	75	Sleeve	1
34	Glass clamp	1	76	Bolt M6x16	2
35	Glass cover	1	77	Square handle	1
36	Bolt M5x8	2	78	Bolt M8x20	2
37	Bolt M6x20	2	79	Nut M8	2
38	Flat washer	2	80	Straight line handle M6	1
39	Bolt M5x50	1	81	Flat key	1
40	Left side cover	1	82	Motor 1.5kw	1
41	Bolt M6x20	4	83	Adjust washer	2

Note: This manual is only for your reference. Owing to the continuous improvement of the machine, changes may be made at any time without obligation on notice. And please note the local voltage while operating this electric machine.