

KAKA® Industrial

SPECIFICATIONS

Model.....HP-10S
 Stock No. 182121
 Capacity..... 10 ton
 Stroke travel.....6.3”(160mm)
 Ram diameter.....2”(51mm)
 Table Size..... 8x16”(203x406mm)
 Max distance ram to table..... 20”(508mm)
 Head movement.....No
 Operating temperature....50-122°F (10-50°C)
 Dimension..... 23.5x14x45”
 Weight.....172 lbs(78kg)



GETTING STARTED

Save this manual

You will need this manual for the safety warnings and precautions, assembly instructions, operating and maintenance procedures, parts lists and diagrams. Keep your invoice with this manual. Write the invoice number on the inside of the front cover. Keep this manual and invoice in a safe and dry place for future reference.

Structural requirements

Make sure all supporting structures and load attaching devices are strong enough to hold your intended loads. If in doubt, consult a qualified structural engineer.

Electrical requirements

Not applicable for manual presses.

Tools needed

Standard professional mechanic's hand tool set (i.e. hammer, screwdrivers, wrenches, socket wrenches, pliers, etc.).

UNPACKING

When unpacking, check to make sure all parts listed below are included. If any parts are missing or broken, please contact your

Model HP-10S

local retailer.

IMPORTANT: Many unpainted steel surfaces have been coated with a protectant. To ensure proper fit and operation, remove the coating. Coating can be easily removed with mild solvents, such as mineral spirits, and a soft cloth. Avoid getting solution on paint or any of the rubber/plastic parts. Solvents may deteriorate these finishes. Use soap and water on paint, plastic or rubber components. After cleaning, cover all exposed surfaces with a light coating of oil.

CAUTION

Never use highly volatile solvents. Avoid getting cleaning solution on paint as it may tend to deteriorate these finishes. Use soap and water on painted components.

Unpack

Remove all the over packing materials, but leave unit attached to its pallet. Do not discard packing materials until after the machine has been inspected for damage and completeness. Locate loose parts and set aside.

Inspect

After unpacking the unit, carefully inspect for any damage that may have occurred during transit. Check for loose, missing or damaged parts. Shipping damage claims must be filed with the carrier.

All tools should be visually inspected before use, in addition to regular periodic maintenance inspections.

Package Contents:

Pipe holder	2
Hydraulic pump assembly	1
Frame with cylinder	1
Bag of replaement rubber o-rings and hardware	1
Manual	1

KAKA[®] Industrial

SAFETY RULES

WARNING

Completely read and understand this owner's manual before assembly or tool operation. Read and understand the warnings shown on the machine and in this manual. Failure to comply with all of these warnings may cause serious injury or death.

PROPOSITION 65 WARNING: Some dust created by using power tools contain chemicals known to the state of California to cause cancer, birth defects or other reproductive harm.

Some Examples of these chemicals are:

- Lead from lead-based paints
- Crystalline silica from bricks and cement and other masonry products.
- Arsenic and chromium from chemically-treated lumber.

Your risk from these exposures varies, depending on how often you do this type of work. To reduce your exposure to these chemicals: work in a well ventilated area and work with approved safety equipment.

Always wear an **OSHA/NIOSH** approved, properly fitting face mask or respirator when using such tools.

WARNING

Always follow proper operating procedures as defined in this manual even if you are familiar with the use of this or similar tools. Remember that being careless for even a fraction of a second can result in severe personal injury.

PREPARING FOR YOUR JOB

- Wear proper apparel. Do not wear loose clothing, neckties, rings, bracelets or other jewelry which may get caught up in moving parts of machine. Do NOT wear gloves.
- Wear protective hair covering to contain long hair.
- Wear safety shoes with non-slip soles.
- Wear safety glasses complying with United States ANSI Z87.1. Everyday glasses have only impact resistant lenses. They are not safety glasses. Use guards and eye shields.
- Wear face mask or dust mask if operation is dusty.

Model HP-10S

- Wear ANSI approved ear protection for extended operation.
- Be alert and think clearly. Never operate power tools when tired, intoxicated or when taking medications that cause drowsiness.
- Focus your attention completely on your work. Looking around, careless actions and other distractions can result in serious injury.
- Make certain the hydraulic press is securely anchored before use.

Maintaining your tool

- Failure to follow the guidelines in this manual can result in serious injury.
 - Disconnect the tool completely from its power supply before performing any service, maintenance, repair or adjustments.
 - Follow OSHA lock-out, tag-out procedures to prevent accidental machine starts.
 - Consult this manual for for the proper use, specific maintenance, and adjustment procedures.
 - Keep tool lubricated and clean for safest operation.
 - Read and understand warnings posted on the machine and in this manual. Replace the warning labels if they become obscured or removed. Failure to comply with all of these warnings can result in serious injury.
 - Before using the machine, check for damaged parts. Check for alignment of moving parts, binding, breakage, mounting issues and any other conditions that may affect operation. Replace any
- ## Preparing the work area for your job
- Do not use this machine in dangerous environments. Do not use it in damp or wet locations. Do not expose it to rain.
 - Keep the work area clean. Cluttered work areas and work benches invite accidents. Keep the area around the machine clean of scrap metal, oil and grease.
 - Keep visitors at a safe distance from work area.
 - Keep children out of workplace. Make workshop childproof. Use padlocks, master switches or remove switch keys to prevent any unintentional use of power tools.
 - Provide adequate space around the hydraulic press and light the area properly with non-glare, overhead lighting.

KAKA[®] Industrial

guard or damaged part that does not function properly before using the tool.

- Use compressed air or a suitable brush to clear chips or debris — do not use your hands.

Know how to use your tool

WARNING

The operation of any tool can result in foreign objects being thrown into the eyes, which can result in severe eye damage. Always wear safety goggles complying with United States ANSI Z87.1. before commencing power tool operation.

Think safety! Safety is a combination of operator common sense and alertness at all times when tool is being used.

- The Hydraulic Press is designed and intended for use by properly trained operators. You must be familiar with the proper and safe operation of a manual hydraulic press. Obtain proper training and knowledge before operating this machine.
- Do not use the Hydraulic Press for any use other than its intended application. Improper use of this tool revokes and

voids any real or implied warranty. The manufacturer is not responsible for any injury that may result from improper use of the machine.

- Do not force an attachment to do a job it was not intended or designed for.
- Never stand on the machine or work in an awkward position. Maintain your balance. Never lean against the machine, over reach or use excessive force when working. You could tip or fall into the machine causing serious injury.
- Know your tool. Learn the tool's operation, application and specific limitations. Never force the machine to do a task it was designed for.
- Use recommended accessories. Understand and obey all safety instructions supplied with accessories. The use of improper accessories may cause risk of injury to persons.
- Always use guards and eyeshields.

Model HP-10S

ASSEMBLY/INSTALLATION

Lifting and setting up your machine

WARNING

Make certain that slings, cables, chains, forklifts or other load suspending gear or machines used to move this unit are properly rated to handle the weight. The machine is extremely heavy.

CAUTION

The machine must be properly secured and anchored before use. Make sure that it is supported equally on all four corners. Failure to comply may result in the machine twisting and causing binds in the working table.

1. Remove any crating or overpacking materials which may be covering the machine. Leave the machine attached to the pallet.

NOTE: The Hydraulic Press is heavy, see "SPECIFICATIONS". Be certain any machine or devices used to lift the press are capable of handling this weight. If manually lifting, ensure that enough people are performing the lift.

2. Ensure sufficient space is available for the press. See Machine Dimensions.

3. Remove all accessory items from the pallet or shipping carton. Compare these items with the listed "UNPACKING".

4. Remove all the nuts and/or bolts securing the machine to the pallet.

5. Center an overhead crane or other suitable overhead lifting device and sling arrangement over the frame.

6. Carefully lift the machine off the pallet. Lift the machine no higher than necessary to clear the surface on which it is to be installed and pull the pallet out of the way. **DO NOT** get your hands or feet underneath the machine when removing the pallet.

7. Place the machine into its final location where it will be anchored to the table top. Anchor bolts of sufficient size and length must be fastened to the table top according to the footprint of the press.

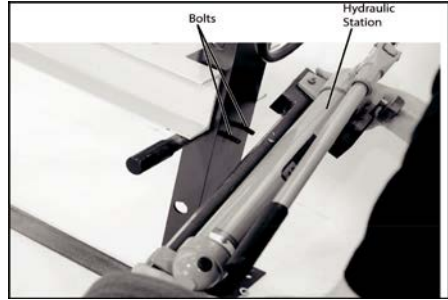
8. While it is not recommended, the machine may be mounted to a wooden floor. The floor must be sturdy and properly braced to ensure a solid foundation for safety and machine accuracy.

KAKA[®] Industrial

9. When the machine is over its anchor location, level the machine using shims under the corners needing them. A highly accurate spirit or digital level should be used for leveling. Leveling should be done on the table top since it is the reference standard for both side-to-side and front-to-back leveling. It is very important that the machine be properly leveled for accurate performance.

NOTE: The diagrams to the right show the reasonable approximate dimensions of the machine and its parts. When determining a final location for your machine ensure there is enough clearance for both the operator and for technicians who will service the machine. Also, consider any larger workpieces that would extend beyond the machine's table and require extra space.

10. Two pairs of bolts, nuts, and washers are installed in the side of the frame to be used to mount the hydraulic station in a later step. Remove the nuts and washers but leaving the bolts stick out from the frame, as shown in the following figure.



11. Unwrap the hydraulic station from packaging. The hose should already be attached to the hydraulic cylinder. If not, reattach it.

12. Position the hydraulic station as shown above and slide the bolts through the holes in the hydraulic station base, slide the washers on, install the nuts on the bolts, and tighten them to secure the hydraulic station to the frame.

13. After assembly is completed it should look as shown in the following figure, with the handle toward the front of the machine.



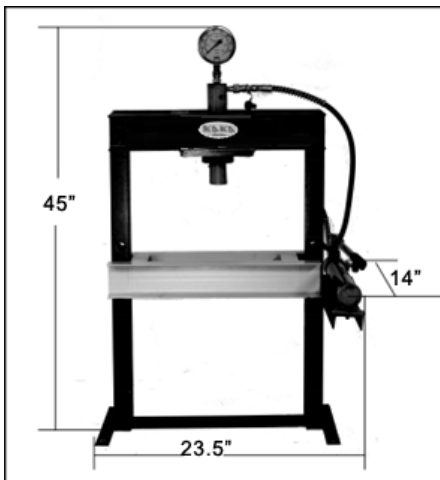
Model HP-10S

Machine dimensions

The following figure shows the approximate dimensions of the hydraulic press and its parts. When determining a final location for your machine, ensure there is enough clearance for both the operator and for technicians who will service the machine.

Also, consider any larger workpieces that would extend beyond the machine's table and require extra space.

Fill the pump with 32# or 46# hydraulic oil as shown by the fill indications.



Lubrication

CAUTION

Do not operate this machine before lubrication and ensuring proper oil level.

Failure to comply may damage the machine.

KAKA® Industrial

OPERATION

WARNING

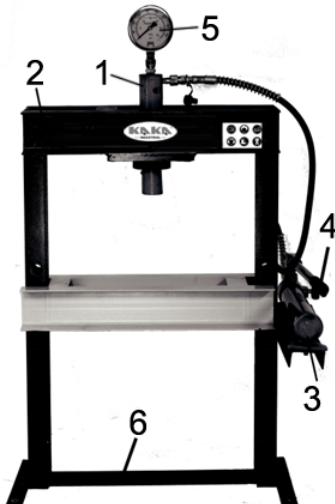
Always wear safety glasses complying with U.S. ANSI Z87.1 before beginning any power tool operation.

CAUTION

Do not operate this machine before properly lubricating the machine. Failure to lubricate the machine before using can cause damage to the machine.

The machine's functional parts

To properly operate the hydraulic press , you must familiarize yourself with all of the machine's controls.



Item No.	Description	Qty
1	Cylinder	1
2	Framework	1
3	Hydraulic Station	1
4	Hydraulic Station Handle	1
5	Hydraulic Gauge	1
6	Table Frame	1

Using the press

WARNING

Pieces to be pressed must have a compact, solid structure and must not be subject to crumbling or other structural damage potential.

WARNING

Do not use the press with no load or allow the piston to extend beyond its operational travel limit.

CAUTION

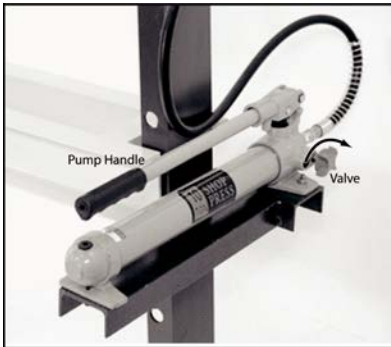
If the temperature exceeds the maximum operating temperature (see “SPECIFICATIONS”) wait until cool.

CAUTION

When setting up the piece to be pressed, ensure that it is centered with respect to the piston.

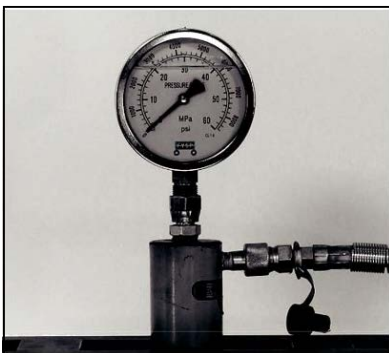
Model HP-10S

1. Close the release valve by rotating it clockwise, as shown in the following figure.



NOTE: The machine is adjusted to produce proper pressure at the factory.

2. Pump the hydraulic station, using the handle shown above.
3. Check the pressure using the gauge on top of the unit, shown below.



4. To release pressure, loosen the release valve. This will also return the plunger to its initial position.

Adjusting the table height

1. Unload the table of all extra items.
2. Lift the table support beam on one side. We recommend asking for assistance in holding the beam, although it is possible to do so only by oneself.
3. Extract the support pin as shown below.



4. Insert the pin into the next adjacent hole, either above or below the original hole. Make sure to insert the pin all the way through both the front and back of the hydraulic press frame.
5. Then ease the support beam back onto the pin. When done this way, only one person is required.
6. Repeat all previous steps for the opposite side.
7. Repeat until the desired height achieved.

KAKA[®] Industrial

TROUBLESHOOTING GUIDE

Symptom	Possible Cause(s)	Corrective Action
Ram does not move	Low oil condition	Fill oil
Ram does not press	Release valve not closed	Close cylinder valve

Model HP-10S

MAINTENANCE/REPAIR

Before any maintenance is performed, ensure all pressure has been released.

Daily:

- General visual inspection-check for any visible damage or missing parts
- Check that all labels are clearly visible and legible
- Check for leaking hydraulic fluid

Weekly:

- Check oil level
- Perform general cleaning Monthly:
- Check wear on the hydraulic piston and station
- Check tightness of the bolts

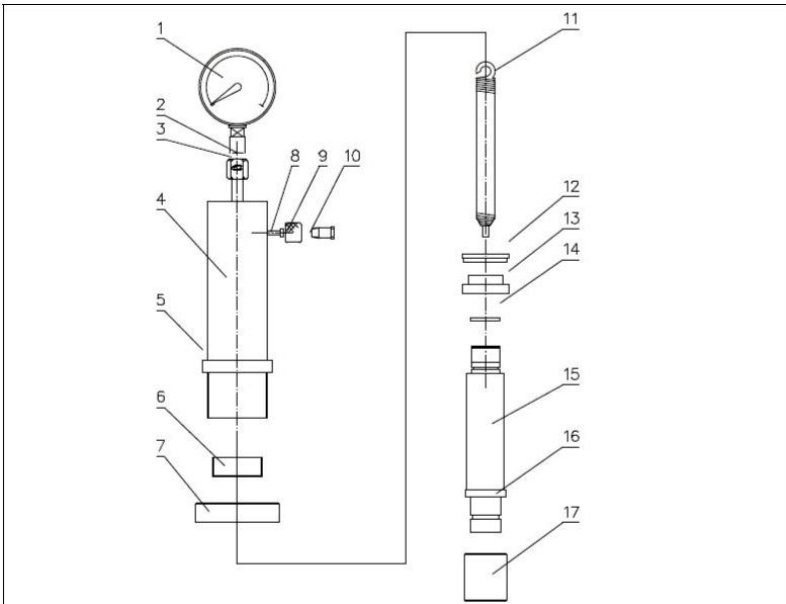
At first 6 Months

- Change the oil for initial operation with new oil. Annually
- Change the oil with new oil.

KAKA[®] Industrial

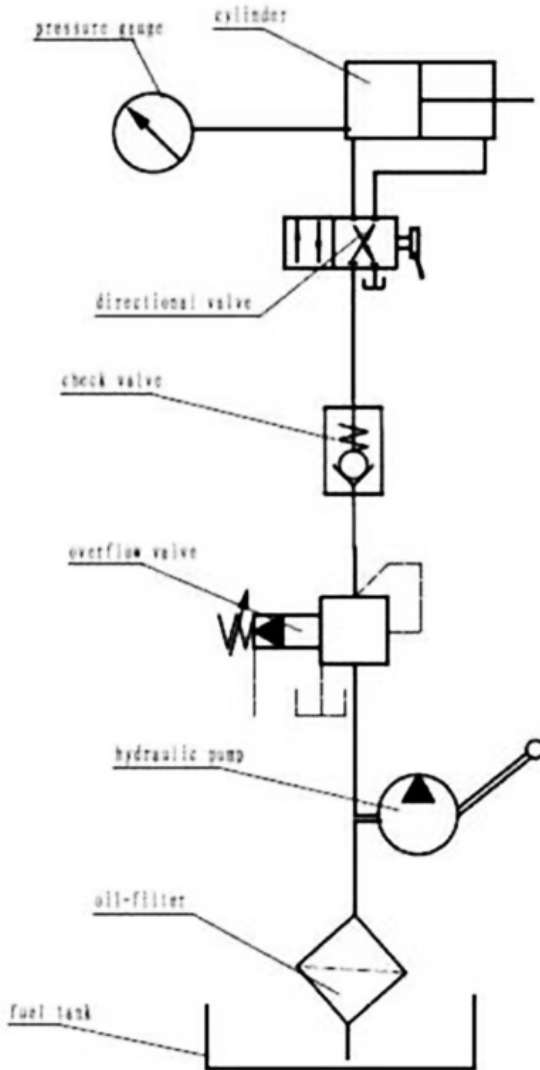
MAINTENANCE/REPAIR

10 Ton Cylinder Parts List



No.	Description	Qty	No.	Description	Qty
1	Pressure Gauge	1	10	Coupling	1
2	Nylon Seal	1	11	Spring	1
3	Coupling Bolt	1	12	Y-Ring	1
4	Oil Cylinder	1	13	Piston Head	1
5	Cylinder Ring (with screw)	1	14	O-Ring	1
6	Retainer Nut	1	15	Piston Rod	1
7	Screw Ring	1	16	Protecting Hood	1
8	Inlet Nut	1	17	Ram	1
9	Inlet Screw	1			

Model HP-10S



Stock No: 182121
Edition 1 01/2023
Copyright © 2023 KAKA



If you have any questions about the use of this product, please contact
the nearest one to you as below:

KAKA INDUSTRIAL LLC

Mail:
info@kakaindustrial.com
Add: 2880 North Berkeley
Lake Road Northwest, ste 3,
Duluth, GA 30093
United States

KAKA INDUSTRIAL LTD

Mail:
echo@kakaindustrial.com
Add: 3143 Underhill Avenue,
Burnaby, B.C V5A3C8,
Canada

KANG INDUSTRIAL PTY LTD

Mail:
kang@kakaindustrial.com
Add: 3 Wayne Court
Dandenong VIC 3175
Australia