

KAKA[®] Industrial

Specifications

| | |
|-------------------|------------|
| Model..... | SBG-30 |
| Stock No. | 173217 |
| Round steel..... | ϕ . 10mm |
| Flat steel..... | 30x10mm |
| Square steel..... | 10x10mm |
| Packing Size..... | 24x24x15cm |
| Net Weight..... | 24kgs |

Check for completeness. Immediately report missing parts to dealer.

Carefully open crate and unbolt brake from shipping pallet and remove from crate using heavy duty lifting equipment such as an overhead crane.



Warning

The warnings, cautions and instructions discussed in this instructions or situations that could occur. It must be understood by the operator that common sense and caution are factors which cannot be built into this product, but must be supplied by the operator.

Unpacking

The UNIVERSAL BENDER is shipped from the manufacture in a carefully packed Carton box. Thoroughly inspect the product upon opening the package. After unpacking the unit, carefully inspect for any damage that may have occurred during transit.

If damage has occurred, shipping damage claims must be filed with the carrier and are the responsibility of the user.

SAVE THIS MANUAL

You will need this manual for the safety instruction, assembly instruction, operating procedures, parts list, and diagram. Write your invoice number on the inside front cover. Put both your manual and invoice in a safe, dry place for future reference.

Model SBG-30

READ ALL INSTRUCTIONS BEFORE USING THIS TOOL!

1.KEEP WORK AREA CLEAN. Cluttered areas invite injuries.

2.OBSERVE WORK AREA CONDITIONS.

Do not use tools in damp, wet, or poorly in locations. Don't expose to rain. Keep work areas well fit. Do not use electrically powered equipment in the presence of flammable gases or liquids.

3.KEEP CHILDREN AWAY. Children must never be allowed in the work area. Don't let them handle the benders.

4.STORE IDLE EQUIPMENT. When not in use, tools must be locked up in a dry location without rust. Always lock up tools and keep out or reach of children.

5.DO NOT FORCE THE BENDER. It will do the job better and more safety at the rate for which it was intended. Do not use inappropriate attachments in an attempt to exceed the tool's capacities.

6.USE EYE, EAR AND BREATHING PROTECTION. Always wear ANSI approved impact safety goggles.

7.DO NOT OVERREACH. Keep proper footing and balance at all times.

8.MAINTAIN TOOLS WITH CARE. Keep tools clean for better and safer performance. Keep handle dry, clean, and free from oil and grease.

9.STAY ALERT. Watch what you are doing. Do not operate any machinery when you are tired.

10.CHECK FOR DAMAGED PARTS. Before using any tool, any part that appears damaged should be carefully checked to determine that it would operate properly and perform its intended function. Check for alignment and binding of moving parts, any broken parts or mounting fixtures, and any other condition that may affect proper operation. Any part that is damaged should be properly repaired or replaced by an

KAKA[®] Industrial

authorized service center unless otherwise indicated elsewhere in the instruction manual.

11. REPLACEMENT PARTS AND ACCESSORIES. When servicing, use only identical replacement parts. Only use accessories intended for use with this tool.

12. DO NOT OPERATE TOOL IF UNDER THE INFLUENCE OF ALCOHOL OR DRUGS. Read warning labels on prescriptions to determine if your judgment or reflexes are impaired while taking drugs. If there is any doubt, do not operate the tool.

OPERATING PROCEDURES

Install:

1. The Metal bender must be mounted to a secure surface before using by fixed the base #1.

2. to fix the handle #15 to the rotary body #2, and then screw tightly the bolts #12.

3. to turn the handle wheel #17 to make the Sliding component #20 moving, for checking if the running is smoothly

4. to check if the dies A #7,#8 and #9 (or dies B #21,#22 or dies C #23,#24) connected with the Die mounting disc #3 tightly. There should be no space between the dies and the Die mounting disc #3, otherwise the fixed pin #4 and #9 will be damaged while working. If there is the space between them, please hit the dies lightly by flat hammer to connect dies with the Die mounting disc #3 tightly

Operating:

1. At first, please must choose the suitable dies component correctly according to the work piece bending effect.

(1) the dies components A #7,#8 and #11 for the bending bigger shape

Model SBG-30

(2) the dies components C #23,#24 for the bending smaller shape,

(3) the dies components B #21,#22 for the bending middle shape between the (1) and (2).

2. Fixed the workpiece into the dies A1#8 (or B2 # 22 or B2#24) by the hex screws.

And press the workpiece tightly by the small sliding wheel of the sliding plate #20, to move the handle #15 to run the rotary body, at the meanwhile to turn the handle wheel for guarantee the sliding wheel always pressed the workpiece tightly. Thus the workpiece will be bend to the shape same as the dies'

3.To turn back the sliding components #20 and to loose the bolts which fixed the workpiece, then the workpiece can be taken out.

Lubricating:

(lubrication for every half year to one year)

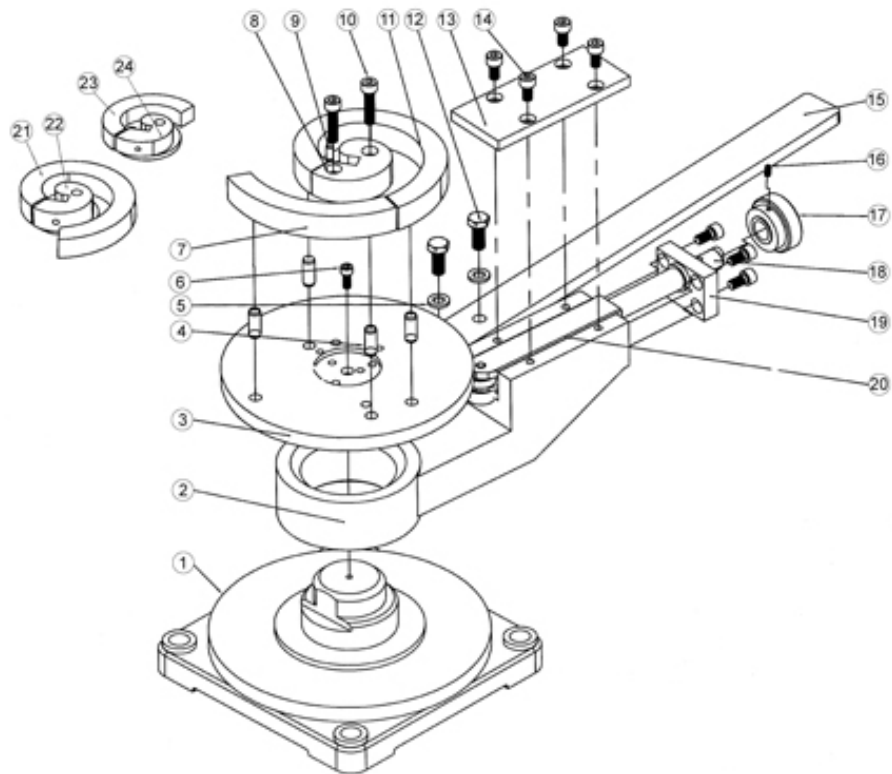
1.The lubrication part between the rotary body #2 and the base #1: Please follow the steps :to loose the bolts #10, take out the dies, the bolts will be appear out and then loose the bolts #6, turn the handle wheel #17 to make the sliding components #20 leave away the Die Mounting Disc #3. Take out the Die Mounting Disc and add some lubrication grease, then install them step by step and to keep them in a good working condition.

2. The lubrication part between the sliding components and the screw shaft : loose the screw #14, take out the press plate #13, turn the handle to add the lubrication grease to the shaft and sliding components slots, then install them step by step and to keep them in a good working condition.

Parts List

| Item | Description | Qty | Item | Description | Qty |
|------|-------------------|-----|------|-------------------|-----|
| 1 | Base | 1 | 13 | Press plate | 1 |
| 2 | Rotary body | 1 | 14 | Screw M8 x 16 | 4 |
| 3 | Die mounting disc | 1 | 15 | Handle | 1 |
| 4 | Pin ϕ 10x25 | 4 | 16 | Fixed screw M5X12 | 1 |
| 5 | Flat washer 10 | 2 | 17 | Handle Wheel | 1 |
| 6 | Bolt M6x16 | 1 | 18 | Shaft | 1 |
| 7 | Die A1 | 1 | 19 | Cover plate | 1 |
| 8 | Dia A2 | 1 | 20 | Sliding component | 1 |
| 9 | Pin ϕ 6x12 | 1 | 21 | Die B1 | 1 |
| 10 | Bolt M8x35 | 2 | 22 | Die B2 | 1 |
| 11 | Die A3 | 1 | 23 | Die C1 | 1 |
| 12 | Bolt M10x25 | 2 | 24 | Die C2 | 1 |

Diagram:



Stock No: 173217
Edition 1 01/2018
Copyright © 2018 KAKA



If you have any questions about the use of this product, please contact the nearest one to you as below:

KAKA INDUSTRIAL LLC

Mail:
info@kakaindustrial.com
Add: 4200 STEVE
REYNOLDS BLVD
STE 6 NORCROSS, GA
30093

KAKA INDUSTRIAL LTD.

Mail:
echo@kakaindustrial.com
Add: 3143 Underhill
Avenue,
Burnaby, B.C V5A3C8,
Canada

KANG INDUSTRIAL PTY LTD

Mail:
kang@kakaindustrial.com
Add: 3 WAYNE COURT
DANDENONG VIC 3175