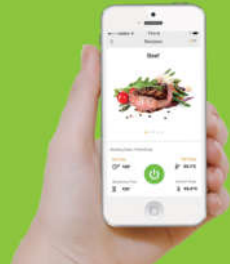


Razorri RZ-09 Sous Vide Cooker

With your Sous Vide Cooker, you will be able to prepare simple, perfectly cooked meals using time and temperature controls on either on the Sous Vide Cooker touch screen or, remotely, on the Sous Vide Cooker smart phoneapp.

Find your free Sous Vide Cook Pro app by searching on iOS and Android
This app is compatible with Sous Vide WiFi models only



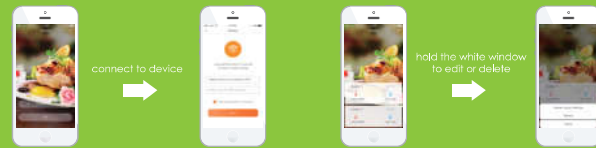
Sous Vide Cooker smart phone app instructions:

1. Connect the Sous Vide Cooker to a power source.
2. Click the Sous Vide Cooker app icon on your smart phone.
3. Tap "connect device" or the "+" in the upper right hand corner.
4. Input Wi-Fi name and password .
5. Press the Wi-Fi icon (📶) on the machine's screen for 3 seconds until the cooker beeps and click "next" on the app. The Wi-Fi icon (📶) will stop flashing when the connection is over.
6. Tap in the white box at the bottom of the screen.

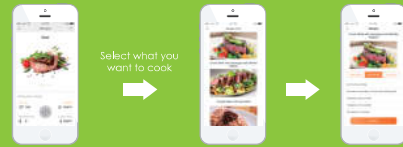


APP Functional Demonstration:

Hold the white window at the bottom of the APP screen until a pop up screen appears. You can edit or delete the device information. When you reset the Wi-Fi connection you need to repeat the 2 step. Make the device look for the network again. And then hold the white window and delete it. And connect to the Wi-Fi network again.



- Click the white window to enter food catalogue and operating area



7. Swipe the screen for various recipes (pork, beef, poultry, fish, eggs). Select a recipe by tapping on a respective photo.
8. Tap "heating" at the bottom of the screen of the selected recipe.
9. Tap the start button (🔥) to start the cooking process.
10. To change the temperature setting or the time setting, tap "set time" and/or "set temp", respectively, at the bottom of the page. Time settings and temperature settings can be adjusted on scroll menu.
11. When the cooking time has been reached, the phone will beep and the indicator light (📶) on the Sous Vide Cooker will turn red. The programmed temperature will be maintained until the Sous Vide Cooker is turned off or the temperature setting is changed.
12. Switch from C/F by clicking on the upper right of the App

If the Wi-Fi connection fails ("Wi-Fi failed" on the APP screen):

Make sure:

1. The Wi-Fi network name and password are correct.
2. The Wi-Fi network name and password are in English letters and numbers.
3. The Wi-Fi network name and password do not exceed 32 characters.
4. The Wi-Fi router frequency is 2.4GHz.
5. The SOUS VIDE is close enough to the router to receive a signal.

To connect to the Wi-Fi network:

1. On the SOUS VIDE screen, press the Wi-Fi icon; at the sound of a beep, it is ready to connect.
2. On the phone APP screen connect to the Wi-Fi network.
3. If the connection is successful, the Wi-Fi logo on the APP screen will stay lit.

Do not:

1. Try to connect to the Wi-Fi network if the SOUS VIDE is in cooking mode.
2. Use a commercial router that needs a double proof connection.
3. Try to connect to a network with multiple calls phones or multiple routers.
4. Try to connect to a router if the number of connections to that router is exceeded.

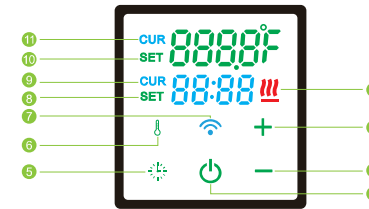
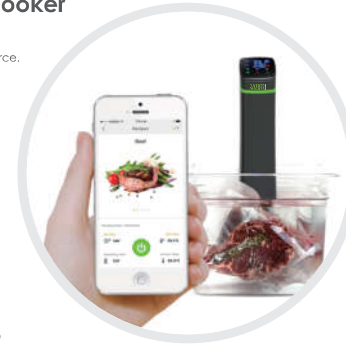
To reset the Wi-Fi connection:

1. The Wi-Fi connection needs to be reset if the Wi-Fi network name has changed or if the password has changed.
2. Hold the white window at the bottom of the APP screen until a pop up screen appears.
3. On the pop up screen, choose "delete" or "Connect to device" to search for a new router.

Razorri RZ-09 Sous Vide Cooker

Sous Vide Cooker touch screen instructions:

1. Connect the Sous Vide Cooker to a power source.
2. Tap the On/Off icon (1).
3. Default cooking time setting (2 hours) and default cooking temperature setting (55 Celsius) are in blue.
4. To change from Celsius to Fahrenheit, press and hold the temperature setting icon (6).
5. To change the cooking time:
 - a) Press and hold the time setting icon (5) until the icon turns green; b) Tap "+" (3) or "-" (2) to achieve the desired cooking time.
6. To change the cooking temperature:
 - a) Press and hold the temperature setting icon (6) until the icon turns green.
 - b) Tap "+" (3) or "-" (2) to achieve the desired cooking temperature.



- 1 On/Off
- 2 Down
- 3 Up
- 4 Working state
- 5 Time setting
- 6 temperature setting
- 7 Wi-Fi
- 8 Set time display
- 9 Current time display
- 10 Set temperature display
- 11 Current temperature display

- 12 Indicator Light
- 13 Pump Outlet
- 14 Power Cord Plug
- 15 Clamp
- 16 Minimum Fill/Maximum Fill
- 17 Back Cover
- 18 Impeller Cover



7. When the desired cooking temperature has been reached, the indicator light (12) on the Sous Vide Cooker will turn green and the clock (9) will start .
8. When the cooking time has been reached, the Sous Vide Cooker will beep and the indicator light (12) will turn red. The programmed temperature will be maintained until the Sous Vide Cooker is turned off or the temperature setting is changed.



A. Blue light shows preheating



B. Green light shows cooking and countdown



C. Red light means time's up and you can do the final step.