



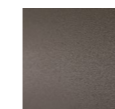
## ALVEA

design Marco Lavit

Triangular console with supporting structure in 8 mm thick steel sheet painted with epoxy powders in burnished colour; panels in 20 mm thick MDF veneered in oak, with top consisting of 20x20 mm section elements of solid oak set in a grating shape, enclosed by a 50x20 mm section perimeter frame, all in solid oak. Wood parts in oak. Support on the floor guaranteed by thermoplastic material supports.

---

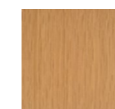
### Supporting Structure



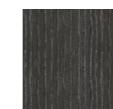
Burnished  
Painted Steel

---

### Structure



Natural Oak



Charcoal-dyed  
Oak

---

### Technical Drawings

