

Roll
Stool,
by Patricia Urquiola

kettal

Stool

Designer
Patricia Urquiola

Collection
Roll

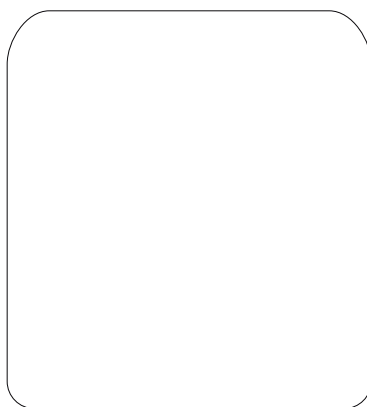
Reference
KS2301100

1/2

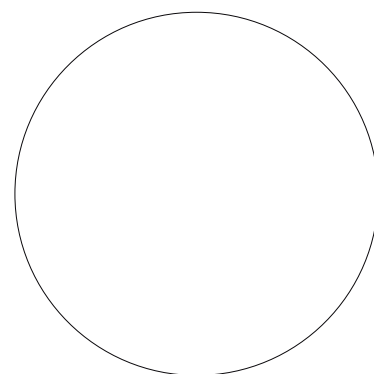
Essential lines and colors define the soft volume of the Roll stool. It is a very versatile seat that provides a more informal language to collective environments. It is available in one seat with a small support backrest that provides comfort while not detracting from the dynamism and functionality of the seat. The graphic, bold and colorful charm of the Terrain Elements also means that it can also be used in outdoor spaces.

cm/inch

42/16,5



cm/inch



Ø40/15,7



Stool

Designer
Patricia Urquiola

Collection
Roll

Reference
KS2301100

2/2

Materials

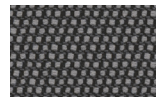
Terrain Elements
100% Dyed Acrylic, Oil Resistant,
Resist U.v. En-581-4, Easy Clean,
Abrasion Resistance 30.000
Cycles, Quickdry

Fabric Colour Options

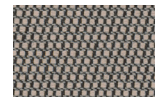
Terrain Laminate Elements



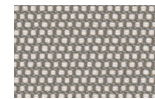
Charcoal
01L



Cumulus
02L



Fog
09L



Porous Grey
08L



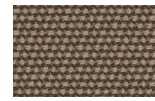
Snowcap
03L



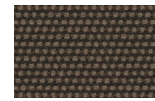
Moonstone
07L



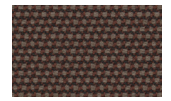
Karakum
06L



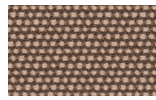
Cambium
12L



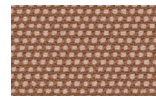
Raku
11L



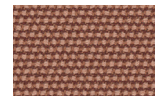
Clove
13L



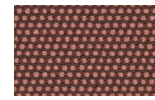
Desert Rose
14L



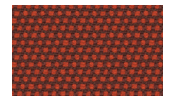
Pink Salt
15L



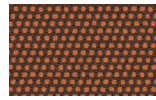
Pacific Dawn
16L



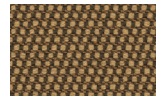
Acer
17L



Firetail
18L



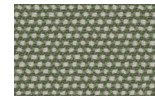
Glowing Ember
19L



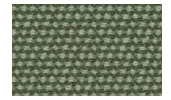
Tiger Eye
05L



Goldrush
04L



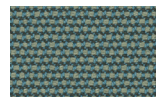
Sea Heart
22L



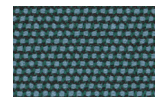
Heath
21L



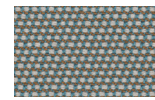
Peppercorn
20L



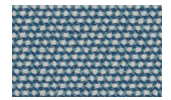
Rock Pool
23L



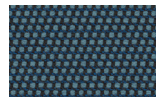
Tropic
24L



Skylark
25L



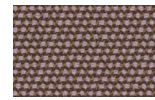
Nautica
26L



Blue Reef
27L



Cosmos
28L



Amethyst
29L

Maintenance

Clean with mild soap using sponge or cloth. Be gentle while cleaning, do not scrub aggressively the fabric. Once cleaned please make sure you remove soap excess.

In case of aggressive stains clean with diluted household bleach.

Clean stains promptly. The longer it remains, more difficult will be to remove.

Once cleaned the fabric steam iron the fabric. Just use steam, be carefull NOT placing the iron directly in the fabric it will get damage.