

# Talo outdoor

## Hexagonal dining table / mesa hexagonal

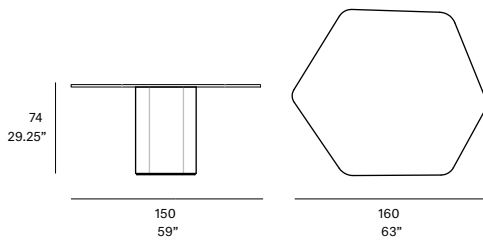
Altherr Désile Park, 2022

C702 H 160

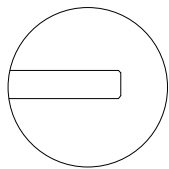


Dining table with UHPC concrete base made up of natural mineral components and organic fibers (non-metallic), which ensure exceptional resistance to weathering. Tabletop options: HPL Trespa® 13 mm/0.51" thick, FENIX NTM® 12 mm/0.47" thick and Dekton® 8 mm/0.31" thick. Delivered unassembled.

Mesa de comedor con estructura de hormigón UHPC compuesto por una mezcla de componentes minerales naturales y fibras orgánicas (no metálicas) que aseguran una excepcional resistencia a la intemperie. Opciones de tablero: HPL Trespa® de 13 mm, FENIX NTM® de 12 mm y Dekton® de 12 mm. Se sirven desmontadas.



Tabletop options:



- HPL Trespa® 13 mm/0.51" thick.
- FENIX NTM® 12 mm/0.47" thick.
- Dekton® 12 mm/0.47" thick.

### Shipment details

Qty 1 dining table (2 boxes)  
Volume 0,60 m<sup>3</sup> / 21.2 ft<sup>3</sup>

HPL Top option  
Gross weight 148 kg / 326.3 lb  
Net weight 108 kg / 238.1 lb

FENIX NTM® Top option  
Gross weight 148 kg / 326.3 lb  
Net weight 108 kg / 238.1 lb

Dekton® Top option  
Gross weight 165 kg / 363.8 lb  
Net weight 125 kg / 275.6 lb

Item dimensions 160 x 150 x 74 cm  
(width x depth x height) 63" x 59" x 29.25"

### HEAVY FURNITURE

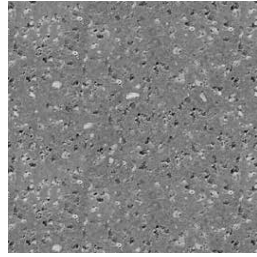
outdoor

frame / estructura

UHPC concrete



C1 stone



C2 slate



C3 terracotta

outdoor

**top / tapa**

**HPL Trespa® - premium**



320 silver quartzite - matt



323 natural chalkstone - matt

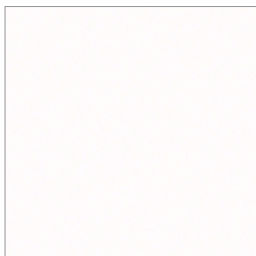


327 titanium bronze - satin

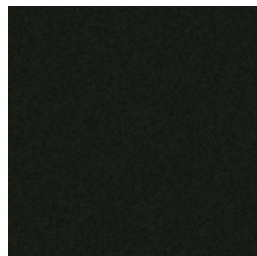


321 italian slate - matt

**FENIX NTM®**



029 bianco male



720 nero ingo

**Dekton® - kraftizen**



K1 albarium



K2 argentium



K3 umber

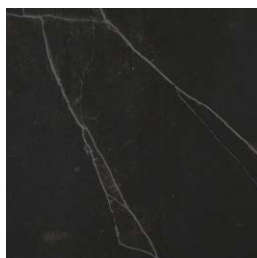


K4 micron

**Dekton® - natural**



D3 danae



D2 kelya