

Plass grande, suspension design Luca Nichetto 2011



Plass - the name is a synthesis of “plastic” and “glass” – interprets the millennia-old artisan tradition of glass making, in the light of a contemporary process and material: rotationally-moulded transparent polycarbonate. Thanks to this technology, which is not yet widely used in the lighting sector, the finishes are not cold and impersonal, but feature slight irregularities, highlighted by the light source, as in handmade glass. The colours chosen for the diffuser – aquamarine and grey – are inspired by Murano glass and venetian craftsmanship. As

well as evoking an atmosphere and an emotion, the color helps define the shape of the lamp, highlighting the thickness of the incisions on its surface. Suspended between memory and modernity, Plass characterises large spaces, including high ones, alone or in multiple compositions.

Plass grande, suspension technical info

Description

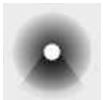
Suspension lamp with diffused and direct light. The large transparent polycarbonate diffuser is achieved using rotational moulding, a technique which makes it possible to create hollow bodies of geblackus sizes without the need for any welding. Brushed aluminum internal mount, stainless steel suspension cable and transparent electrical cable. Ceiling rose with galvanised metal bracket and glossy chromed metal cover.

Materials Rotational moulded polycarbonate and aluminium

Colors blue, grey

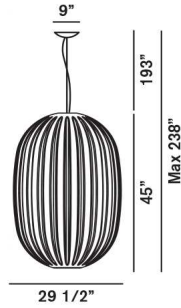


Brightness light
semi-diffused and direct down light



Model

Plass



Weight

net lbs: 50,71
gross lbs: 74,96

Packaging

vol. cub. ft.: 30,265
n. boxes: 2

Bulbs

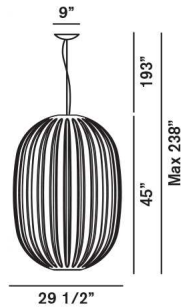
Halogen 6x60W G9 +halogen 1x100W E26 PAR 30

double switch

Certifications



Plass LED



Weight

net lbs: 50,71
gross lbs: 74,96

Packaging

vol. cub. ft.: 30,265
n. boxes: 2

Bulbs

LED included 30W 3000° K 2500 lm CRI>80 84 lm/W + 1x12W E26 PAR 30

Certifications



[2D/3D drawings](#)
[photometric info](#)
[assembly instructions](#)

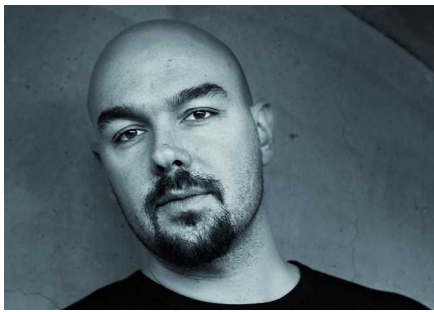
download area



Plass grande, suspension designer+collection

Luca Nichetto

Born in Venice where he graduated in Industrial Design. In 2006 he founded his studio, Nichetto&Partners, that deals with Design Consultant as well as Industrial Design. He held workshops in different universities in Italy and abroad and he takes part to exhibition in Europe, United States and Japan.



Plass grande Collection



table