

skram

skramfurniture.com



piedmont #1 stool

PSI-1 / PSI-2 / PSI-3



The piedmont #1 stool is a backless stool featuring solid timber construction and a reinforced heavyweight leather sling seat. This product is offered in 3 standard heights for dining, counter, and bar applications. Models PSI-2 and PSI-3 have a metal footrest. Clients may specify timber, sling seat, and footrest material/finishes from the options below. Custom options are available. Residential or contract use.

skram

PSI-1 width 16 / 41cm depth 15 / 38cm height 18 / 46cm

PSI-2 width 16 / 41cm depth 15 / 38cm height 25 / 64cm

PSI-3 width 16 / 41cm depth 15 / 38cm height 31 / 79cm

Timber



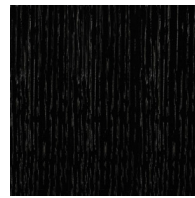
Cherry



Walnut



Whitewashed
Rift Sawn White
Oak

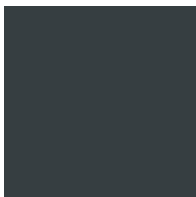


Ebonized Rift
Sawn White Oak



Natural Rift
Sawn White Oak

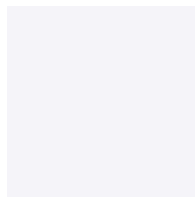
Metal



Charcoal



Black



White

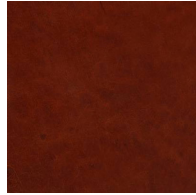
skram

Leather

Character Grade



Character-Long
on Tan

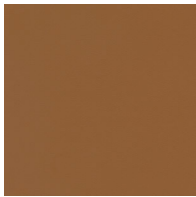


Character-Chest
nut

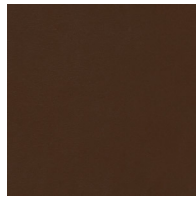


Character-Black

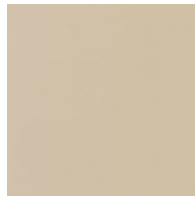
Architectural Grade



BL 1924-Warm
Beige



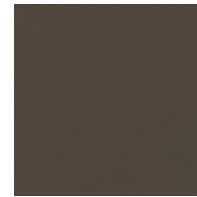
BL 1923-Brown



BL 1919-Cream



BL1918-Medium
Grey



BL1915-Smoke