

MUSCO — MARTA FERRI 2022

1—
2



TECHNICAL INFORMATION

Thickness: 0,7 cm
Weight: 3100 +/- 3% gr/mq
Structure: sewn plaits 100% polypropylene

COLOURS

Multicolour: olive green/earth brown /beige frange olive green
Sand frange earth brown
Olive green frange earth brown

MAINTENANCE

Stains should be removed promptly using an absorbent cloth, frequent vacuuming and/or light brushing. Clean with water and allow to dry naturally avoiding exposure to direct sunlight.

WASHING

Professional cleaning recommended.

Customised carpets are available prior feasibility verification by the Molteni Sales Dept.

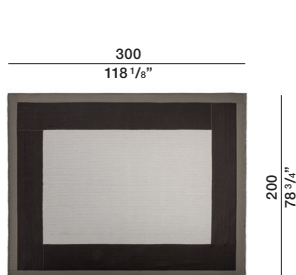
General notes

This rug is hand-made. Any irregularities are elements that emphasize the distinctiveness of craftwork and should not be considered defects. Slight variations in colour may occur from dye lot to dye lot.

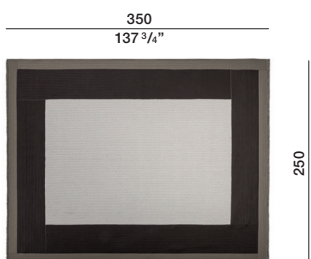
MUSCO —
MARTA FERRI
2022

DIMENSIONS

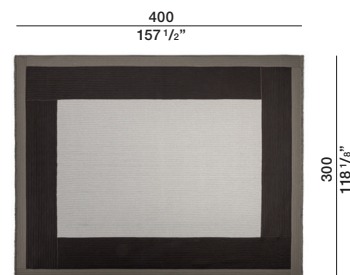
Musco
multicolour carpet



OTAMU01



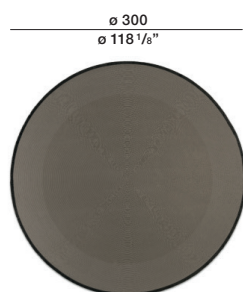
OTAMU02



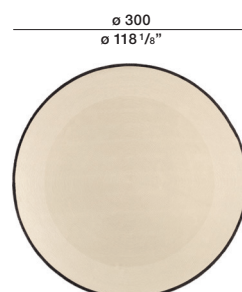
OTAMU03

2—
2

Musco
monocolour carpet

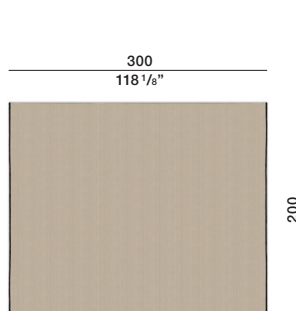


OTAMU12

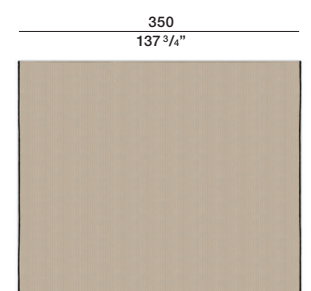


OTAMU12

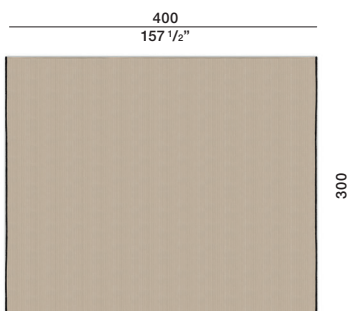
Musco
monocolour carpet



OTAMU01

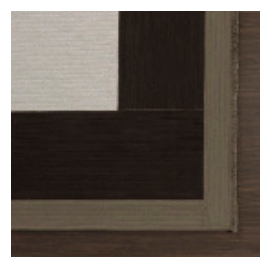


OTAMU02

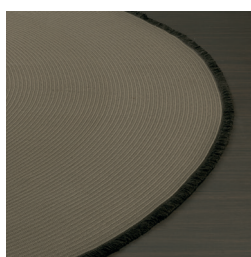


OTAMU03

Multicolour: olive green/
earth brown /sand
frange olive green



Olive green
frange earth brown



Sand
frange earth brown



Sand
frange earth brown

