

m o o o i®

NYC  
DESIGN  
2019 AWARDS WINNER



## BFF Sofa

---

"BFF, a sofa that is your friend, that embraces you if you are tired, that cheers with you when your national soccer team scores a goal, that makes your mother-in-law feel welcome, that comforts you when you receive bad news, that stays with you also when you move cities, that never skips your birthdays, that never talks too loud, yet supports you if you do. A true Best Friend Forever." (Marcel Wanders). Soft, yet a firm modular sofa system, the BFF Sofa is inspired by the capitone technique, loosely based on the chesterfield style, with its characteristic deep buttoned upholstery. The technique in the BFF Sofa is blown-up, so one fragment becomes a full module. The technique is synonymous with elegance and class, and with its modern approach the modular BFF Sofa is a timeless eyecatcher with 17 different modules, a footstool and a wide range of fabrics to choose from. Design your own BFF Sofa with our online configurator on [moooi.com/BFF](https://moooi.com/BFF).

---

**Designer**

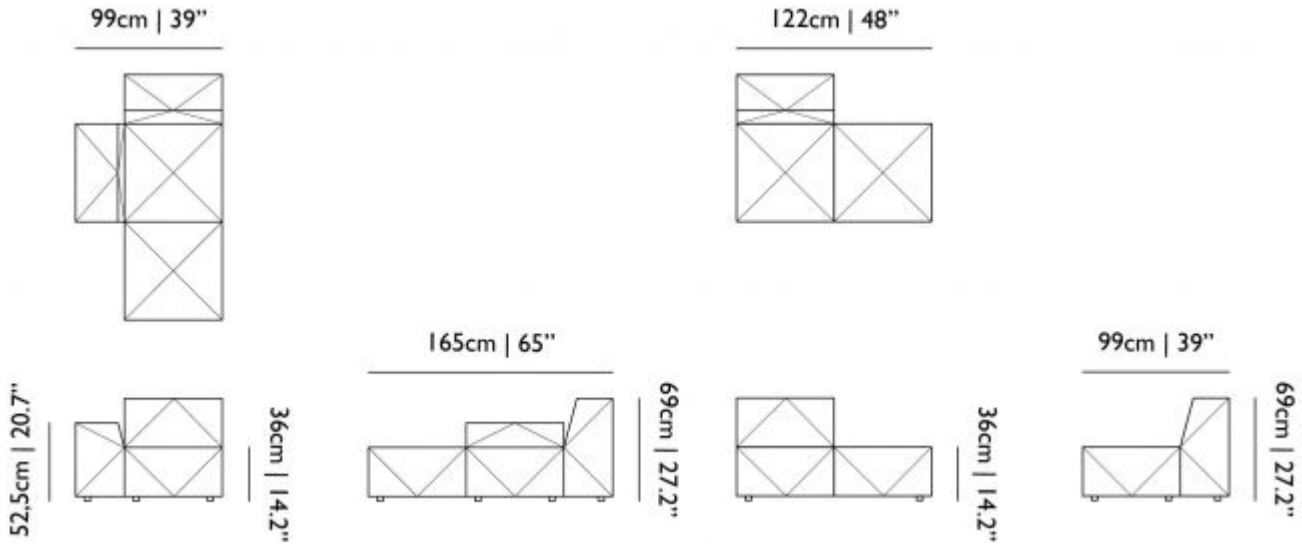
Marcel Wanders

**Year of design**

2019

# m o o o i

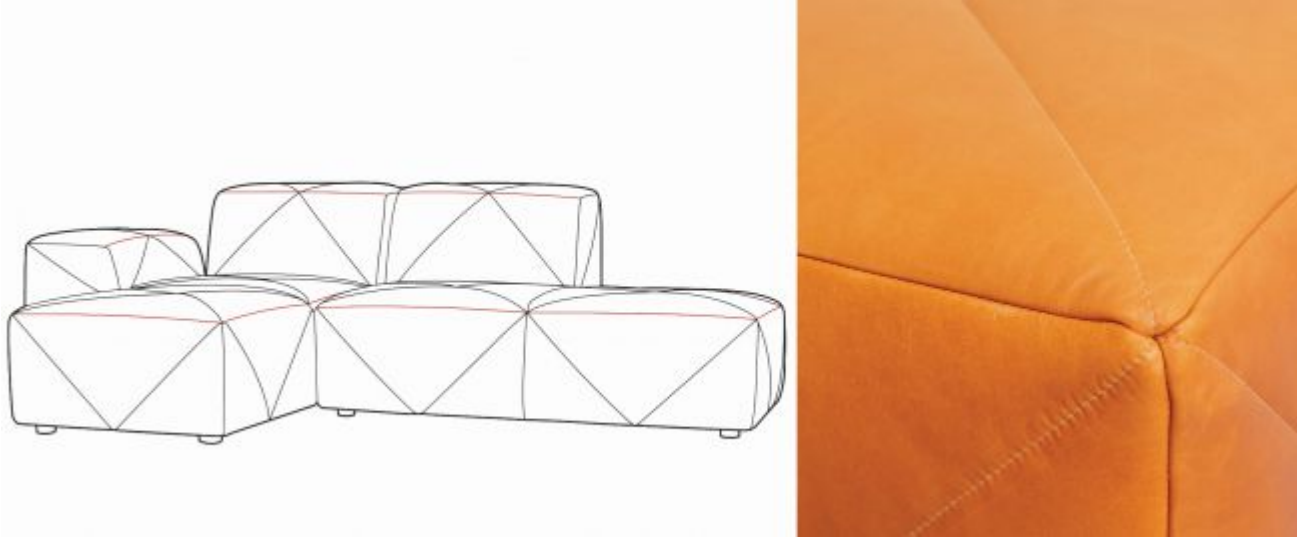
## Dimensions below are for BFF Sofa Setting on this page



# m o o o i<sup>®</sup>

---

## BFF leather stitching information

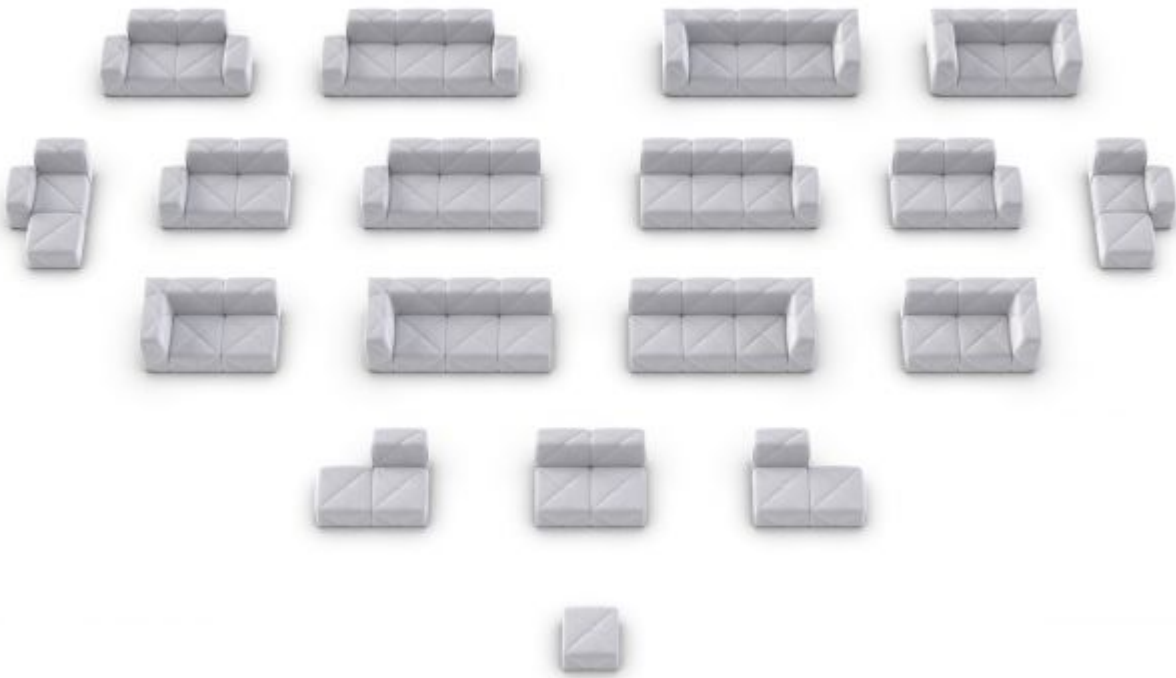


The BFF Sofa upholstered in leather has additional stitching. See the coloured lines in the image above for an overview.

---

# m o o o i<sup>®</sup>

## BFF Sofa Modules & footstool



m o o o i<sup>®</sup>

## Vesper

### composition

10% CO, 40% L, 10% PA, 10% PL, 30% VI

### abrasion

40.000 Martindale rubs, EN ISO 12947

### lightfastness

Note 5, EN ISO 105-B02

### firetest

EN 1021-1/2

US. Cal. Bull. 117-2013

Upon request, with treatment:

BS5852 part 1

BS5852 crib 5



Vesper  
**Aluminium**



Vesper  
**Brass**



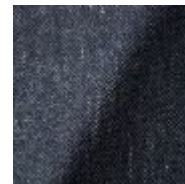
Vesper  
**Bronze**



Vesper  
**Nickel**



Vesper  
**Silver**



Vesper  
**Steel**

m o o o i<sup>®</sup>

---

## Macchedil, Sottile

### composition

49% vi, 24% pl, 21% li, 6% co

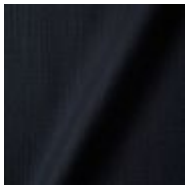
### abrasion

30.000 martindale

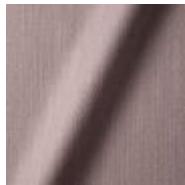
### lightfastness 4

### firetest

EN1021 I&2



Macchedil Sottile  
**Black indigo**



Macchedil Sottile  
**Pinkish**



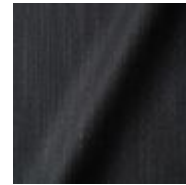
Macchedil Sottile  
**Off white**



Macchedil Sottile  
**Light brown**



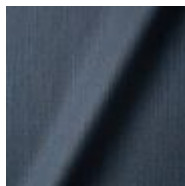
Macchedil Sottile  
**Grey grey**



Macchedil Sottile  
**Anthracite**



Macchedil Sottile  
**Cappuccino**



Macchedil Sottile  
**Deep blue**

m o o o i<sup>®</sup>

## Macchedil, Grezzo

### composition

47% co, 20% vi, 18% pi, 8% li, 5% pc, 2% af

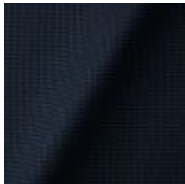
### abrasion

18.000 martindale

### lightfastness 4

### firetest

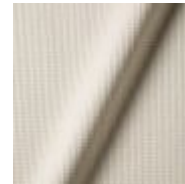
EN1021 I&2



Macchedil Grezzo  
**Black indigo**



Macchedil Grezzo  
**Pinkish**



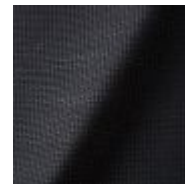
Macchedil Grezzo  
**Off white**



Macchedil Grezzo  
**Light brown**



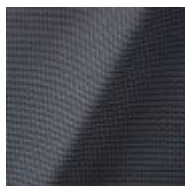
Macchedil Grezzo  
**Grey grey**



Macchedil Grezzo  
**Anthracite**



Macchedil Grezzo  
**Cappuccino**



Macchedil Grezzo  
**Deepblue**

m o o o i<sup>®</sup>

## Solis

### composition

2% PA 3% PC 30% PL 65% WO

### abrasion

40.000 Martindale rubs, EN ISO 12947

### lightfastness

Note 5, EN ISO 105-B02

### firetest

EN 1021-1/2

US. Cal. Bull. 117-2013

Upon request, with treatment:

BS5852 part 1

BS5852 crib 5



Solis  
Crust



Solis  
Dawn



Solis  
Fog



Solis  
Paper



Solis  
Rain



Solis  
Spencer



Solis  
Sunset



m o o o i<sup>®</sup>

## Bouclé

### composition

43% co, 28% pan, 14% pa, 12% vi, 3% pl

### abrasion

20.000> martindale

### lightfastness 4

### firetest

EN1021 I&2



Bouclé  
**Black white**



Bouclé  
**Rainbow**



Bouclé  
**Brown**

## Jacquard andaz

### composition:

34% cotton - 30% viscose - 24% linen - 12% polyamide

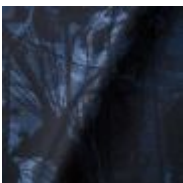
### abrasion:

25000 martindale

### lightfastness 4-5

### firetest:

BS EN 1021 I&2



Jacquard  
**Andaz**

m o o o i<sup>®</sup>

## Jaquard Fresco

**composition**

40% vi ,36% co, 14% pl, 10% li

**abrasion**

20.000> martindale

**lightfastness** 4-5

**firetest**

EN1021 I&2



Jaquard  
**Fresco**

---

## Jacquard Old Black & Blue

**composition**

52% vi, 38% co, 10% li

**abrasion**

20.000> martindale

**lightfastness** 4-5

**firetest**

EN1021 I&2



Jaquard  
**Old Blue**



Jaquard  
**Old Black**

m o o o i®

## Justo

### composition

15% CO, 35% PC, 10% PL, 40% VI

### abrasion

50.000 Martindale rubs, EN ISO 12947

### lightfastness

Note 5, EN ISO 105-B02

### fire test

EN 1021-1/2

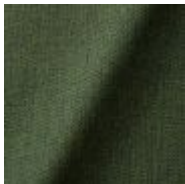
US. Cal. Bull. 117-2013

NFPA 260

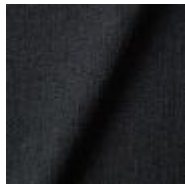
Upon request, with treatment:

BS5852 part I

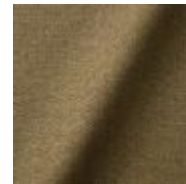
BS5852 crib5



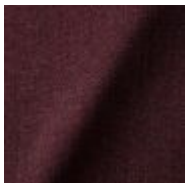
Justo  
**Alge**



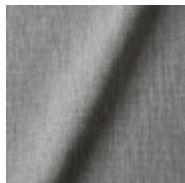
Justo  
**Bazalt**



Justo  
**Bred**



Justo  
**Hinde**



Justo  
**Lyse**



Justo  
**Muse**



Justo  
**Sennep**



Justo  
**Sten**

m o o o i®

## Liscio

### composition

35% WO / 35% CV / 21% CO / 9% PA

### abrasion

30.000 Martindale

### lightfastness

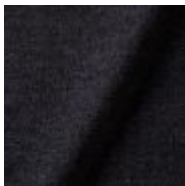
4-6

### firetest

US. Cal. Bull. 117-2013

Upon request, with treatment:

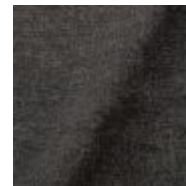
BS5852 part I



Liscio  
**Grigio Blu Scuro**



Liscio  
**Grigio Blu**



Liscio  
**Grigio Scuro**



Liscio  
**Muscio**



Liscio  
**Argento**



**Liscio**  
Nebbia



Liscio  
**Perla**



Liscio  
**Latte Scuro**



Liscio  
**Latte**

m o o o i<sup>®</sup>

## Twill

### composition

72% wo, 8% pa, 20% pl

### abrasion

75.000 martindale

### lightfastness 5

### firetest

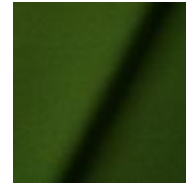
EN1021 I&2



Twill  
**Caviar**



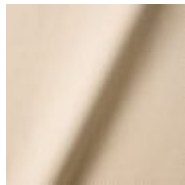
Twill  
**Graphite**



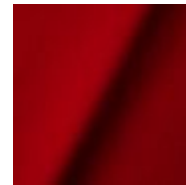
Twill  
**Grass**



Twill  
**Linen**



Twill  
**Natural**



Twill  
**Passion**

m o o o i<sup>®</sup>

---

## Twill Melange

### composition

60% WO / 20% PES / 20% PA

### abrasion

80.000 martindale

### lightfastness 6-7

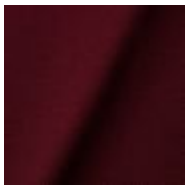
### firetest

EN1021-1/2

US. Cal. Bull. 117-2013

BS5852 part I

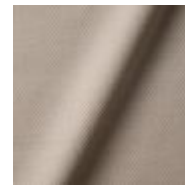
DIN 4102-B2



Twill Melange  
**Chili**



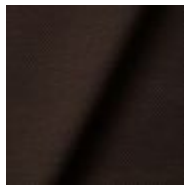
Twill Melange  
**Dust**



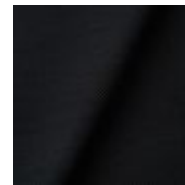
Twill Melange  
**Flour**



Twill Melange  
**Lavender**



Twill Melange  
**Peat**



Twill Melange  
**Slate**

m o o o i®

## Bearded Leopard Jacquard

### composition

77% VI / 15% PES / 7% CO / 1% PA

### abrasion

15.000 Martindale rubs, EN ISO 12947

### lightfastness

Note 4-6, EN ISO 105-B02

### firetest

EN1021-1/2

Upon request and with treatment:

BS5852 part I



### Extinct Animals Fabric Collection

Bearded Leopard  
Jacquard

---

## Blushing Sloth Woolly Mohair

### composition

85% WV / 15% WM

### abrasion

15.000 Martindale rubs, EN ISO 12947

### lightfastness

Note 4-6, EN ISO 105-B02

### firetest

EN1021-1/2

BS5852 part I

m o o o i®



**Extinct Animals  
Fabric Collection**  
Blushing Sloth Woolly  
Mohair

---

## Blushing Sloth Melange Mohair

**composition**

29% LANA / 24% LANA WM / 24% PES / 15% PA / 8% CO

**abrasion**

40.000 Martindale rubs, EN ISO 12947

**lightfastness**

Note 4-6, EN ISO 105-B02



**Extinct Animals  
Fabric Collection**  
Blushing Sloth Melange  
Mohair

---

## Dodo Pavone Jacquard

**composition**

12% CO 88% PL

**abrasion**

40.000 Martindale rubs, EN ISO 12947

**lightfastness**

Note 5, EN ISO 105-B02

**firetest**

US. Cal. Bull. 117-2013

Upon request, with treatment:

BS5852 part I



m o o o i®



**Extinct Animals  
Fabric Collection**  
Dodo Pavone Jacquard

---

## The Silent Bison Velvet

**composition**

100% CO

**abrasion**

30.000 Martindale rubs, EN ISO 12947

**lightfastness**

Note 4-6, EN ISO 105-B02



Extinct Animals Fabric  
Collection  
The Silent Bison Velvet

---

## Calligraphy Bird Jacquard

**composition**

64% VI, 21% PES, 15% CO

**abrasion**

50.000 Martindale rubs, EN ISO 12947

**lightfastness**

Note 4-6, EN ISO 105-B02

**firetest**

Upon request, with treatment;  
BS5852 part I

m o o o i<sup>®</sup>



Extinct Animals Fabric  
Collection  
Calligraphy Bird  
Jacquard

---

## Flying Coral Fish Scaled

### Type

Pure aniline, nubuck finish



**Extinct Animals  
Fabric Collection**  
Flying Coral Fish Scaled

---

## Dwarf Rhino Buffed

### composition

100% steer

### Type

Pure aniline, nubuck finish

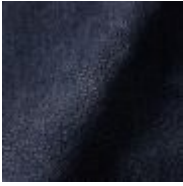


Extinct Animals Fabric  
Collection  
Dwarf Rhino Buffed

---

## Dwarf Rhino Crackle

m o o o i<sup>®</sup>



**Extinct Animals  
Fabric Collection**  
Dwarf Rhino Crackle

---

## Armoured Boar Crackle

### composition

100% cow hide

### Type of leather

Pure aniline, nubuck finish



**Extinct Animals  
Fabric Collection**  
Armoured Boar Crackle

---

## Kvadrat Fabrics

### Kvadrat Fabrics

Selected Moooi products can be upholstered with a collection of Kvadrat fabrics. Kvadrat designs high-quality upholstery, in an extensive range of colours and textures.