

# skram

skramfurniture.com



## lineground #2 stool

LS4 / LS5 / LS6 / LS7



The lineground #2 stools are offered in 2 models for counter and bar height applications. They are available with or without arms, with woven leather seat or upholstered seat. Specify timber, seat, and footrest materials/finishes from the options below. Footrest is timber with metal insert projecting from top edge for wear resistance. Upholstered seat version recommended for contract applications. Custom material options are available. Residential or contract use.

# skram

---

<b>LS4</b>	width 18 / 46cm	depth 21 / 53cm	height 36 / 91cm	seat height 24 / 61cm
------------	-----------------	-----------------	------------------	-----------------------

---

<b>LS5</b>	width 21 / 53cm	depth 21 / 53cm	height 36 / 91cm	seat height 24 / 61cm
------------	-----------------	-----------------	------------------	-----------------------

---

<b>LS6</b>	width 18 / 46cm	depth 21 / 53cm	height 42 / 107cm	seat height 30 / 76cm
------------	-----------------	-----------------	-------------------	-----------------------

---

<b>LS7</b>	width 21 / 53cm	depth 21 / 53cm	height 42 / 107cm	seat height 30 / 76cm
------------	-----------------	-----------------	-------------------	-----------------------

---

## Timber

---



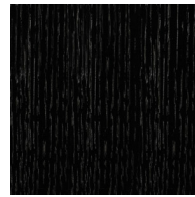
Cherry



Walnut



Whitewashed  
Rift Sawn White  
Oak



Ebonized Rift  
Sawn White Oak



Natural Rift  
Sawn White Oak

# skram

---

## Metal

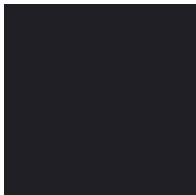
---

Natural



Brushed  
Stainless Steel

Matte Opaques



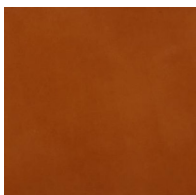
Black

---

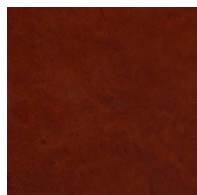
## Leather

---

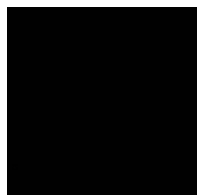
Character Grade



Character-Lond  
on Tan



Character-Chest  
nut



Character-Black

# skram

---

**Leather**

---

Mammut - Tier Two