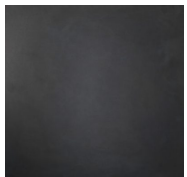


LIGHT RING

DESIGN MASSIMO CASTAGNA



Black Burnished Steel



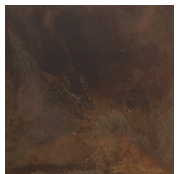
Burnished Platino



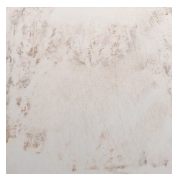
Burnished Titanio



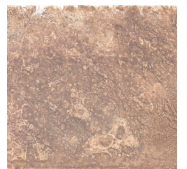
Burnished Brass



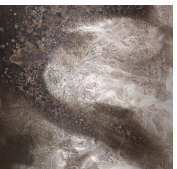
Black Burnished Brass



H-Silver



H-Silver Black



Silver Patina

Certified product:



STRUCTURE

Dimmable pendant led lamp (energy efficiency index A), energy saving with warm light, in several compositions made up of metal rings. Handmade, available in different sizes and types of light emission; transformers inserted in the ceiling rosette, rings powered with low voltage through suspension wires. Available with extra warm light 2700K (without extra costs). Only for indoor use. Dimmable push button. Other dimming systems available upon request.

FINISHES

Black burnished steel, burnished Platino, burnished Titanio, burnished brass, black burnished brass, H-Silver or H-Silver black.

TECHNICAL DATA

3 RING COMPOSITION (from top to bottom)

1 x Ø 23.6 in ring with upward pointing led
2 x Ø 27.6 in rings with central pointing led
3 x Ø 19.7 in rings with downward pointing led

Minimum overall height 35.4 in 3000K

4 RING COMPOSITION (from top to bottom)

1 x Ø 23.6 in ring with upward pointing led
2 x Ø 39.4 in rings with or without upward pointing led
3 x Ø 27.6 in rings with central pointing led
4 x Ø 19.7 in rings with downward pointing led

Minimum overall height 47.2 in 3000K

8 RING COMPOSITION (from top to bottom)

1 X Ø 27.6 in ring with central pointing led
2 X Ø 23.6 in ring with upward pointing led
3 X Ø 39.4 in ring with or without upward pointing led
4 X Ø 27.6 in ring with central pointing led
5 X Ø 23.6 in ring with upward pointing led
6 X Ø 39.4 in ring with or without upward pointing led
7 X Ø 23.6 in ring with upward pointing led
8 X Ø 19.7 in ring with downward pointing led

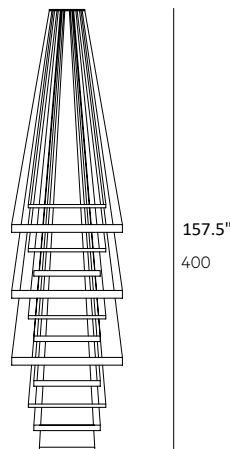
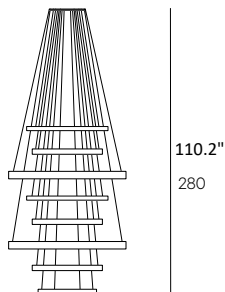
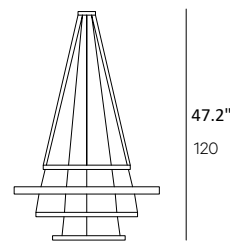
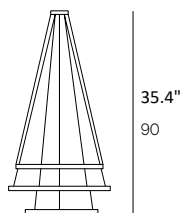
Minimum overall height 110.2 in 3000K

12 RING COMPOSITION (from top to bottom)

1 X Ø 27.6 in ring with central pointing led
2 X Ø 39.4 in ring with downward pointing led
3 X Ø 27.6 in ring with central pointing led
4 X Ø 23.6 in ring with downward pointing led
5 X Ø 39.4 in ring with upward pointing led
6 X Ø 27.6 in ring with central pointing led
7 X Ø 23.6 in ring with upward pointing led
8 X Ø 39.4 in ring with downward pointing led
9 X Ø 23.6 in ring with downward pointing led
10 X Ø 27.6 in ring with central pointing led
11 X Ø 23.6 in ring with upward pointing led
12 X Ø 19.7 in ring with downward pointing led

Minimum overall height 157.5 in (steel suspension wires) 3000K

TECHNICAL DRAWINGS



CARE AND MAINTENANCE OF METALS

Always clean stains while they are still fresh. For routine maintenance use a microfiber cloth and water. Do not use products containing acids, limescale removing substances or alcohol.

LIGHT RING - XXL SLIM

DESIGN MASSIMO CASTAGNA



Black Burnished Steel



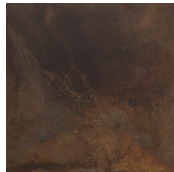
Burnished Platino



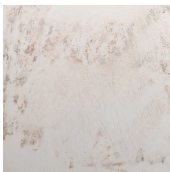
Burnished Titanio



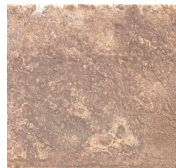
Burnished Brass



Black Burnished Brass



H-Silver



H-Silver Black

Certified product:



STRUCTURE

Dimmable pendant led lamp (energy efficiency index A), energy saving with warm light, in several compositions made up of metal rings. Handmade, available in different sizes and types of light emission; transformers inserted in the ceiling rosette, rings powered with low voltage through suspension wires. Available with extra warm light 2700K (without extra costs). Only for indoor use. Dimmable push button. Other dimming systems available upon request.

FINISHES

Black burnished steel, burnished Platino, burnished Titanio, burnished brass, black burnished brass, H-Silver or H-Silver black.

TECHNICAL DATA

7 RING COMPOSITION

(from top to bottom)

1 X Ø 23.6 in ring with upward pointing led

2 X Ø 19.7 in ring with downward pointing led

3 X Ø 27.6 in ring with central pointing led

4 X Ø 23.6 in ring with upward pointing led

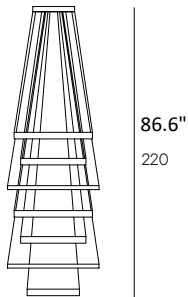
5 X Ø 19.7 in ring with downward pointing led

6 X Ø 27.6 in ring with central pointing led

7 X Ø 15.7 in ring with downward pointing led

Minimum overall height 86.6 in
3000K

TECHNICAL DRAWING



CARE AND MAINTENANCE OF METALS

Always clean stains while they are still fresh. For routine maintenance use a microfiber cloth and water. Do not use products containing acids, limescale removing substances or alcohol.