

Talo outdoor

Hexagonal coffee / centro hexagonal

Altherr Désile Park, 2022

C709

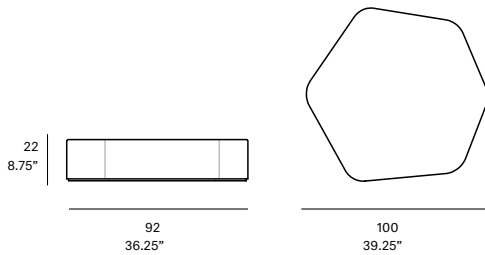
UHPC concrete base made up of natural mineral components and organic fibers (non-metallic), which ensure exceptional resistance to weathering. Optional clear tempered glass top.



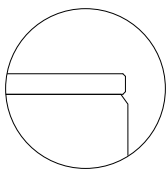
Estructura de cemento UHPC compuesto por una mezcla de componentes minerales naturales y fibras orgánicas (no metálicas) que aseguran una excepcional resistencia a la intemperie. Tapa opcional de cristal templado transparente.

Shipment details

| | |
|---|---|
| Qty | 1 coffee table (1 box) |
| Volume | 0,45 m ³ / 15 ft ³ |
| Without glass Top option | |
| Gross weight | LQ kg / 108 lb |
| Net weight | KL kg / 75 lb |
| With glass Top option | |
| Gross weight | 62 kg / 163.7 lb |
| Net weight | 48 kg / 105.8 lb |
| Item dimensions (width x depth x height) | 92 x 100 x 22 cm 36.25" x 39.25" x 8.75" |



Optional tabletop:



- tempered glass top 8 mm/0.31" thick.

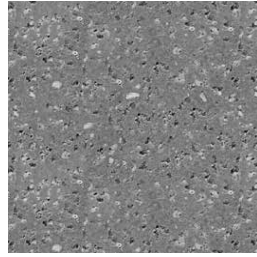
outdoor

concrete base

UHPC concrete



C1 stone



C2 slate



C3 terracotta