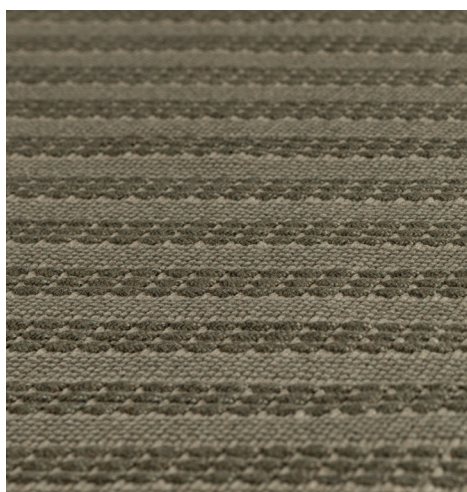


## **HEDERA** by Perennials — VINCENT VAN DUYSSEN 2022

1—  
2



### **TECHNICAL INFORMATION**

Thickness: 0,8 cm cut / 0,6 cm loop  
Weight: 3800 gr/mq  
Structure: hand-knotted - 100% solution-dyed acrylic

### **COLOURS**

Sand base - olive green

### **MAINTENANCE**

Stains should be removed promptly using an absorbent cloth, frequent vacuuming and/or light brushing. Clean with water and allow to dry naturally avoiding exposure to direct sunlight.

### **WASHING**

Professional cleaning recommended.

Customised carpets are available prior feasibility verification by the Molteni Sales Dept.

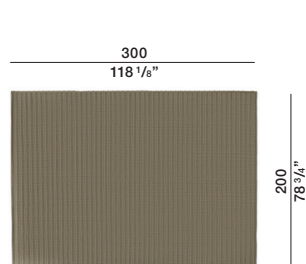
### **General notes**

This rug is hand-made. Any irregularities are elements that emphasize the distinctiveness of craftwork and should not be considered defects. Slight variations in colour may occur from dye lot to dye lot.

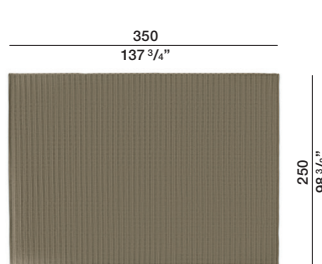
**HEDERA**  
BY PERENNIALS —  
VINCENT  
VAN DUYSSEN  
2022

## DIMENSIONS

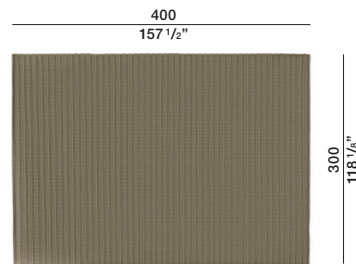
### Hedera



OTAH01



OTAH02



OTAH03

Molteni & C | OUTDOOR

2—  
2

Sand base - olive green

