

ATALANTE by Ruckstuhl —
NICOLA GALLIZIA 2018

1—
2



General notes

- Copyright protected
- Any irregularities should not be considered a defect but an element that emphasizes the distinctiveness of craft work
- A slight variation in colour may occur from dye lot to dye lot
- Variations of +/- 3% on measurements supplied or required are within standard.

DATASHEET

REGISTERED
DESIGN

IX.2021

Dimensions in centimeters and inches. The right to discontinue and make changes is reserved. This information is based on the latest product information available at the time of printing.

ATALANTE
BY RUCKSTUHL—
NICOLA
GALLIZIA
2018

TECHNICAL INFORMATION

Height fleece: cm. 1,2
Density: 3,4 Kg/mq
Structure: hand-tufted
100% Hemp

COLOURS
Desert_ Vulcano_ Lava

MAINTENANCE
Vacuum cleaner, at least 2000W

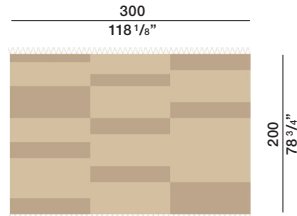
CLEANING
Recommended washing with dry cleaning products

Customised carpets are available prior feasibility verification by the Molteni Sales Dept.

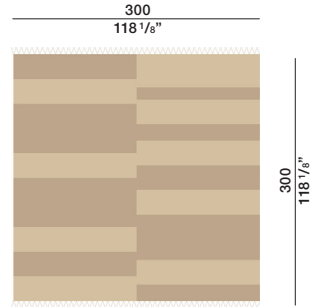
DIMENSIONS

2—
2

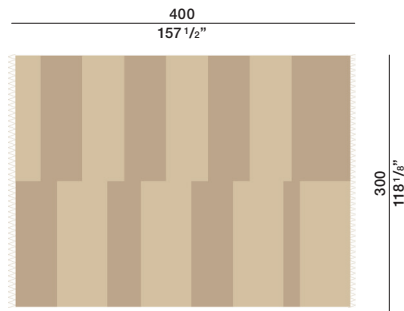
TAAT01



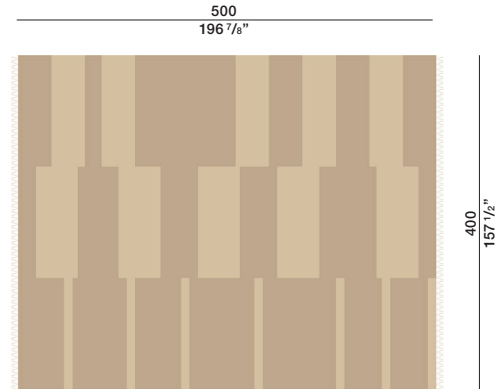
TAAT02



TAAT03



TAAT04



Desert

Vulcano

Lava



DATASHEET

REGISTERED
DESIGN

IX.2021