

Vieques
Bar stool
by Patricia Urquiola

CASA
DESIGN
GROUP

Bar stool

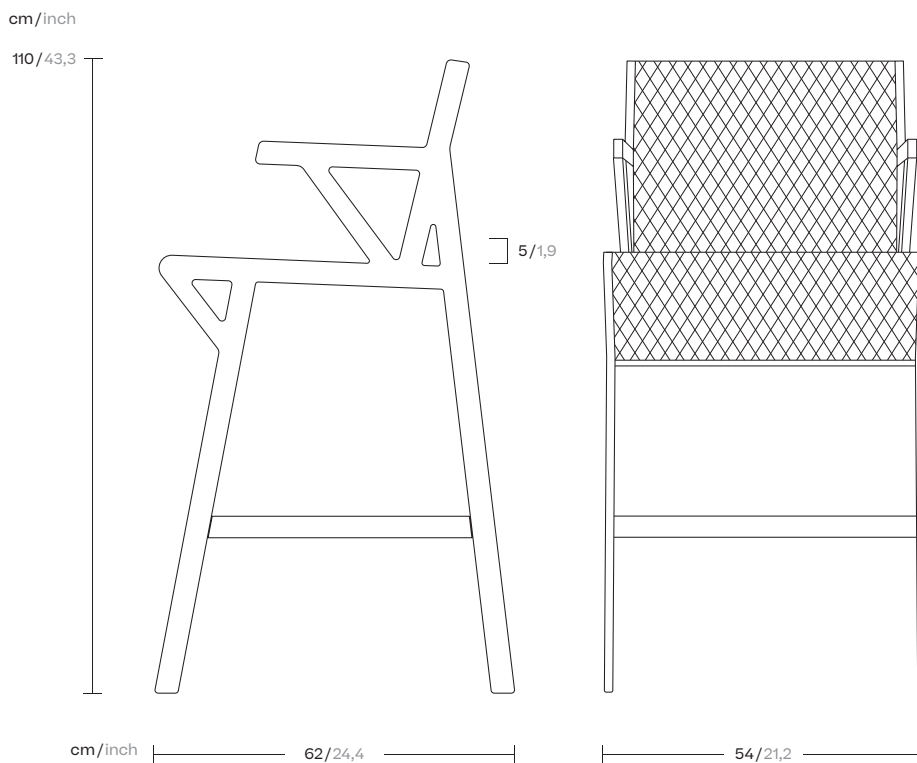
Designer
Patricia Urquiola

Collection
Vieques

Reference
KS4101200

1/4

Kettal Vieques is a collection characterised by the combination of an aluminium frame with a new and revolutionary three-dimensional fabric, Nido d'Ape, with exceptional technical features, created especially for this collection and exclusively for Kettal.



Bar stool

Designer
Patricia Urquiola

Collection
Vieques

Reference
KS4101200

2/4

Materials

Aluminium

Antioxy, Heavy Load, Resistant
En-1421, Kettalize-It, Anti-
Scratch, Easy Clean,
Flame Retardant M1, Eco Friendly
Ecoembes Recycling Process

Porotex Fabric Special, Laminated Fabric

Heavy Load 100.000 Cycles,
Heavy Load Resistant 1000
Decitex, Kettalize-It,
Resist U.v. En-581-4, Easy Clean,
Abrasion, Resistance 30.000
Cycles, Quickdry

Maintenance

Clean with mild soap using
sponge or cloth. Be gentle
while cleaning, do not scrub
aggressively the fabric. Once
cleaned please make sure you
remove soap excess.

In case of aggressive stains
clean with diluted household
bleach.

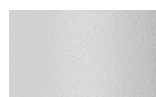
Clean stains promptly. The
longer it remains, more difficult
will be to remove.

Once cleaned the fabric steam
iron the fabric. Just use steam,
be carefull NOT placing the
iron directly in the fabric it will
get damage.

Frame Colour Options



Chalk
721



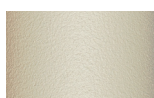
Bone
678



London Clay
729



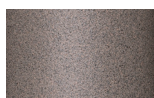
Sepia
088



Camomile
106



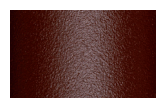
Onyx
101



Claystone
741



Mahogany
100



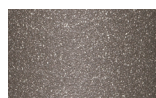
Terra Rossa
087



Aquamarine
107



Juniper
092



Sand Storm
132



Tuff
103



Carbon
737



Magma
086



Cobalt
089



Amazon
102



Pumice
131



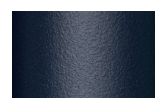
Mist
773



Lilac
104



Terracota
085



Indigo
094



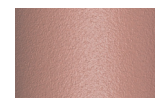
Bronze
093



Galena
105



Flint
734



Feldspar
082



Sahara
139



Jade
091



Corten
727



Manganese
726

Bar stool

Designer
Patricia Urquiola

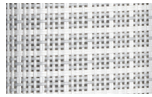
Collection
Vieques

Reference
KS4101200

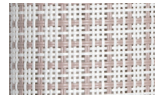
3/4

Fabric Options

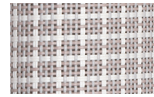
Porotex Parallel Fabrics



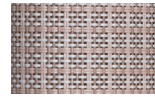
White Anemone
527



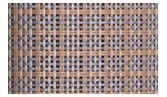
Lace Coral
528



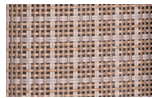
Padina
564



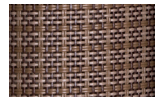
Saline
571



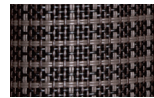
Alaria
572



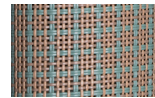
Sponge
536



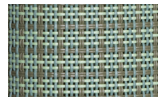
Fucus
537



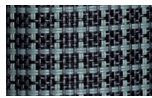
Urchin
547



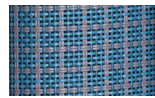
Kelp
556



Turtle Grass
553



Deep Ocean
570



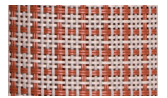
Winter Sea
569



Xenia
568



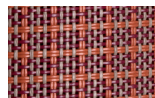
Plumaria
567



Irish Moss
559



Coral
562



Dulse
565

Bar stool

Designer
Patricia Urquiola

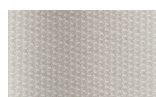
Collection
Vieques

Reference
KS4101200

4/4

Seat Cushion

Terrain Fabrics Laminate



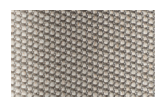
White Cliffs
290



Dry Sand
285



Porous Grey
291



Limestone
292



Fog
289



Deer
286



Wet Sand
287



Cobblestone
302



Cyprus Umber
301



Loam
297



Charcoal
293



Arctic
295



Fjord
248



Cerulean
314



Caribbean
298



Atlantic
311



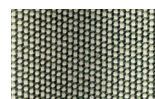
Rainforest
312



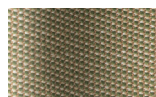
Lagoon
249



Cedar
288



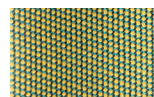
Moss
296



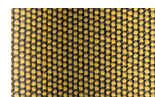
Olive
313



Autumn
315



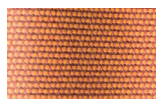
Summer Sky
317



Golden Sand
303



Flamma
304



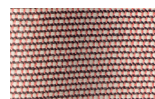
Sunrise
299



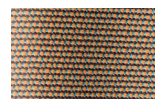
Saffron
305



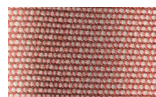
Burnt Sienna
306



Ash Rose
294



Cooper
316



Dusk Pink
307



Flamingo
310



Coral
309



Sandstone
308