

# Thea Barstool

2024

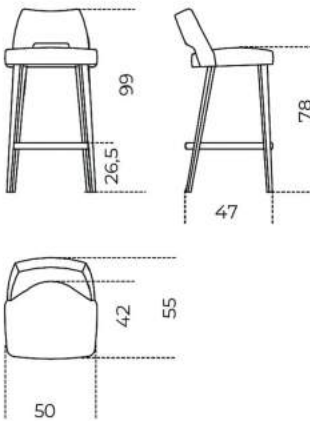


Stool with inside structure in wood and by-products padded in non-deflatable foam polyurethane in different density and polyester fibre. Covered by fabric or leather as per samples.

Black open pore lacquered oak legs. Anthracite grey lacquered metal footrest. Not removable cover.

**Cm (L x P x H)**  
50 x 55 x 99

**Inches (L x P x H)**  
19¾ x 21¾ x 39



# Finishes

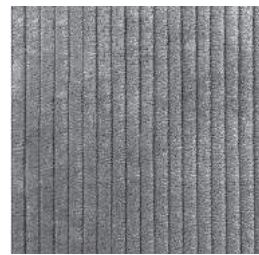
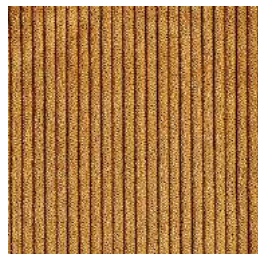
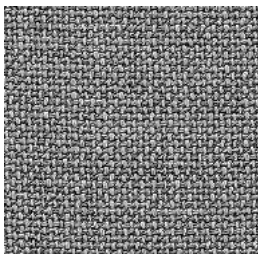
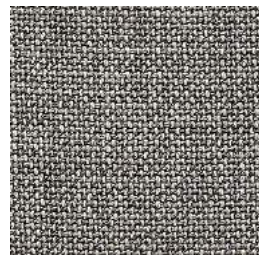
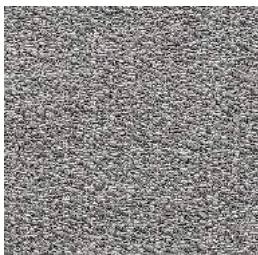
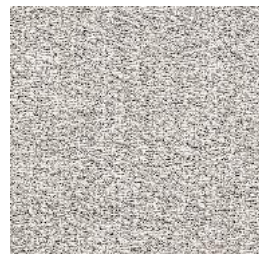
## Wood



## Metal



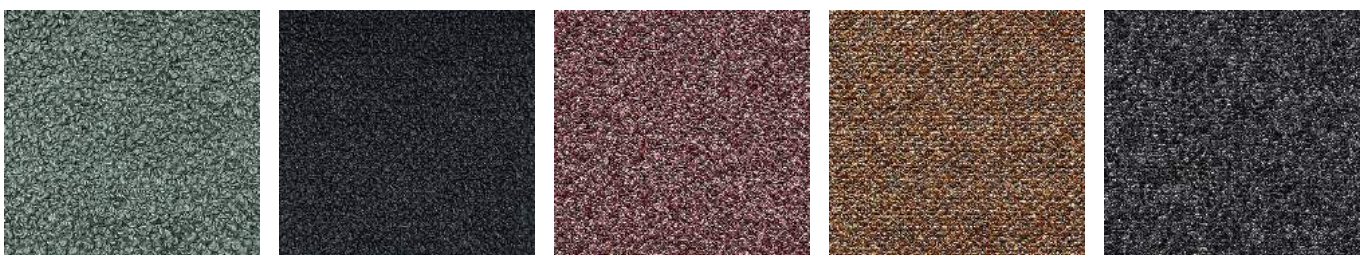
## Fabric Cat.A



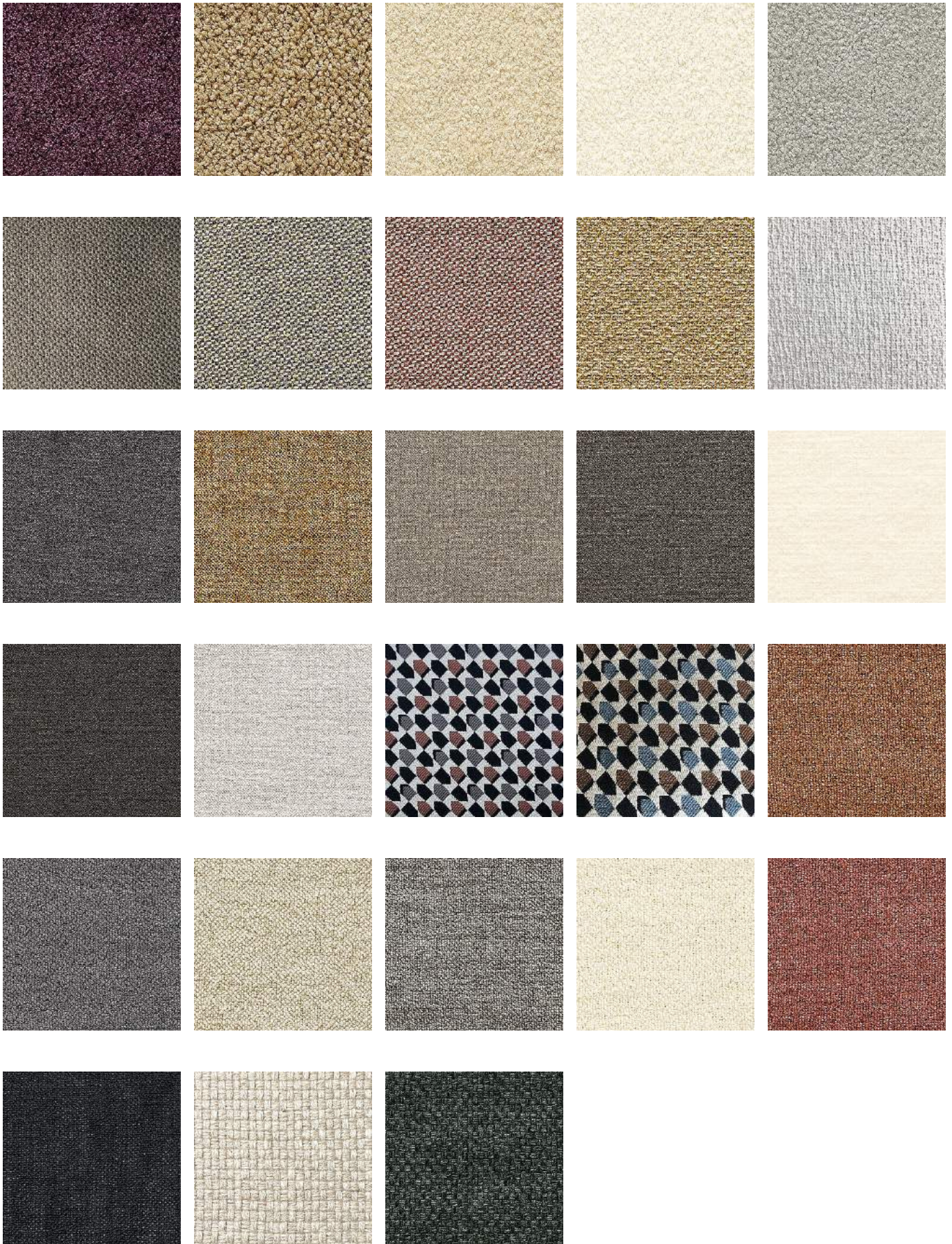




**Fabric Cat.B**



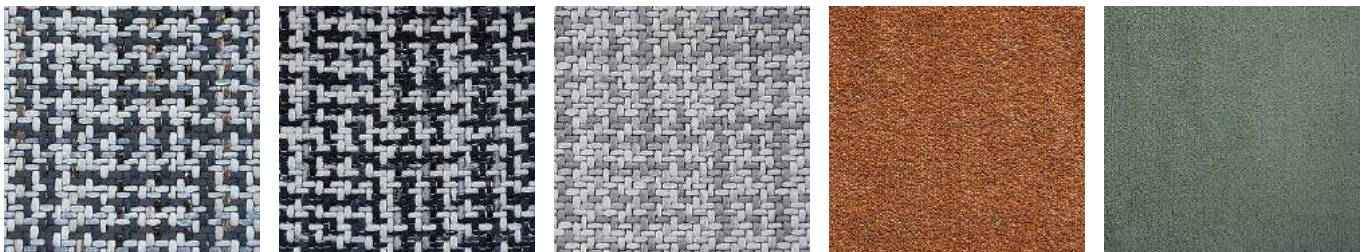




## Fabric Cat.C



## Fabric Cat.D





Pleasu e ce ulean 107



Pleasu e Deep Ocean 002



Pleasu e Djon 015



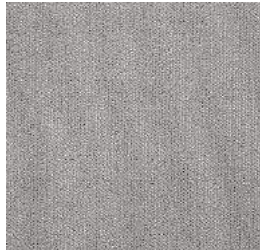
Pleasu e ose powde 031



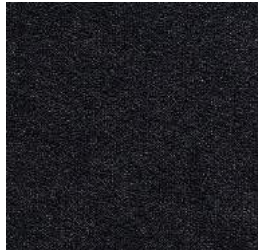
Pleasu e sienna 128



Pleasu e silt 116



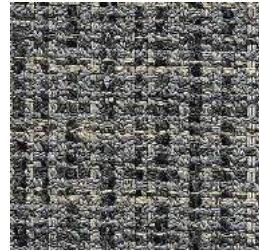
Pleasu e Silve 009



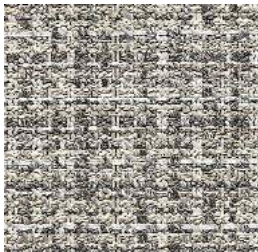
Pleasu e slate 112



Zest ambe 805



Zest anth acite 803



Zest g eige 801

## Leather Cat.L1



Fa d ambe 2343



Fa d anth acite 2379



Fa d clay 2303



Fa d dee 2346



Fa d ec u 2304



Fa d loden geen 2357



Fa d milk 2300



Fa d nude 2334



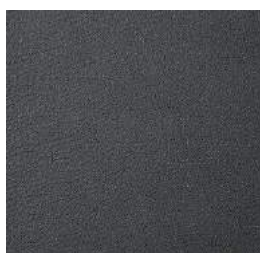
Fa d otte 2348



Fa d silt 2324



Fa d silve 2302



Fa d slate 2386



Fa d tan 2305



Soft amber 004



Soft anthracite 005





Soft clay 002



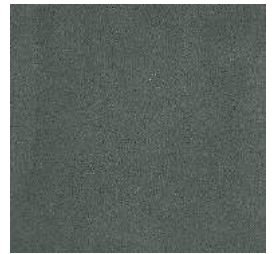
Soft deer 003



Soft ecru 001



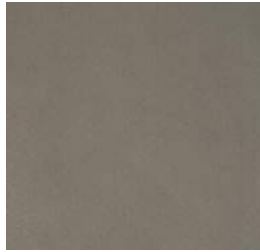
Suede grey 020



Suede grey 058



Suede grey 074



Suede sand 006



Suede sand 012

## Leather Cat.L2



Leather black 001



Leather clay 008



Leather milk 010



Leather rose powder 012



Leather tobacco 013



Nabuk black 2138



Nabuk blue 2117



Nabuk cement 2115