

Split

Designed by Claesson Koivisto Rune, 2007  
Cat. Low Tables



# Split

Designed by Claesson Koivisto Rune, 2007  
Cat. Low Tables



## Split

Designer: Claesson Koivisto Rune  
Year: 2007

A complete collection of round, oval, square and rectangular tables in a range of heights and sizes, all with the same distinctive base. The wide selection of finishes ensures Split table is ideal both for contract needs and for home use.

Developed by Tacchini in Italy

### Dimensions (cm)

Cod. 1SPLI53



Ø 53 H 50 cm

Cod. 1SPLI45



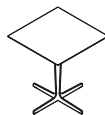
W 45 D 45 H 50 cm

Cod. 1SPLI70



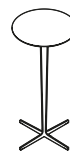
Ø 70 H 72 cm

Cod. 1SPLI65



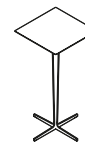
W 65 D 65 H 72 cm

Cod. 1SPLI53A



Ø 53 H 110 cm

Cod. 1SPLIQ53A



W 53 D 53 H 110 cm



# Split

Designed by Claesson Koivisto Rune, 2007  
Cat. Low Tables

---

## Materials description

Base: metal base powder-coated painted.

---

Top: thickness 19 mm MDF lacquered, or marble top. Anti stain marble treatment available on request.

---

## Painted base



T02 RAL 9016  
White



T07 RAL 9011  
Black



T08 RAL 8019  
Brown

---

## Top



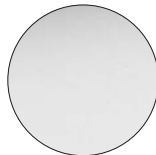
T29  
Shiny White Carrara



T31  
Shiny White Calacatta



T33  
Matt Black Travertine



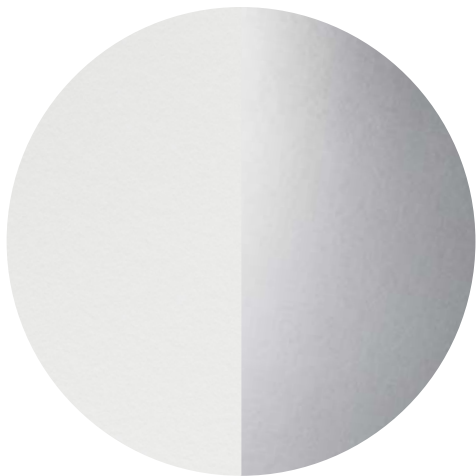
T57  
White Full Color



T58  
Black Full Color

---

## Materials informations



Metal	50%
Top table (laminated, marble, lacquered MDF)	50%

## Marble

Marble is a natural material obtained through a metamorphic process from sedimentary rock such as limestone or dolomite, causing crystallisation of the calcium carbonate. The specific features of the material can be seen in the marble we use which is worked by artisans with machinery and polished with natural waxes which go to respect the actual essence of the nature of the marble.

## Metal

The need to combine complex yet lightweight shapes with resistant materials necessarily involves the use of metals such as steel and aluminium. Products in polyurethane foam are made with an inner steel frame for adding strength to the structure. The bases are in tubular metal which can be chromed with a gloss or satin finish or painted with epoxy powders.

## Recyclability

All Split elements are 100% recyclable when fully separated. Tacchini undertakes on-going research and development, with efforts made to introduce products which are a perfect combination of function and safety without jeopardizing the final design of the same articles. During production attempts are made to minimize noise and emission levels and to reduce rejects as far as possible. All the single materials which make up the production process, once disassembled, can be reused several times, maintaining a high quality standard.

## Packaging

Split element is dispatched already assembled. It is protected by tissue paper and cellophane to protect the covering from dust and direct contact with the cardboard. The product is packed in rigid cardboard boxes suitable for world export. Manufacture of the packaging observes the criteria for recovery both as recycling and energy recovery and composting.

Once a product reaches the end of its life cycle it has to be eliminated.

To discover more about Tacchini environmental policy please visit: [www.tacchini.it](http://www.tacchini.it)

Split

Designed by Claesson Koivisto Rune, 2007  
Cat. Low Tables



---

Claesson Koivisto Rune

The Claesson Koivisto Rune studio was established in 1995 as a multidisciplinary architecture and design workshop, in line with the classic Scandinavian tradition, but with the aim of exploring new concepts, and pursuing the values of simplicity and innovation. The three Swedes have created architectural designs throughout the world and in every sector, from homes to restaurants, retail to executive buildings, as well as furniture ranges for numerous major international firms.

Other products by Claesson Koivisto Rune: Campo, Doodle, Doodle Armchair, Doodle Stool, Highlife, Isola, Kelly B, Kelly C, Kelly E, Kelly H, Kelly L, Kelly O, Kelly T, Kelly V, Kelly W, Lima, Lima Armchair, Misura S, M, L, XL, Montevideo, Montevideo Armchair, Pisa, Quartier, Santiago, Santiago Armchair, Spin.

---

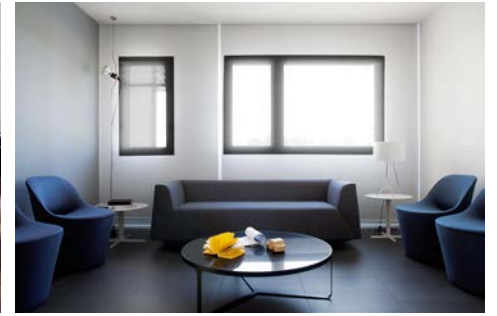
Tacchini Projects:



Marktgasse Hotel  
(Zurich, Switzerland)



Skeppsholmen Hotel  
(Stockholm, Sweden)



COB  
(Meda, Italy)